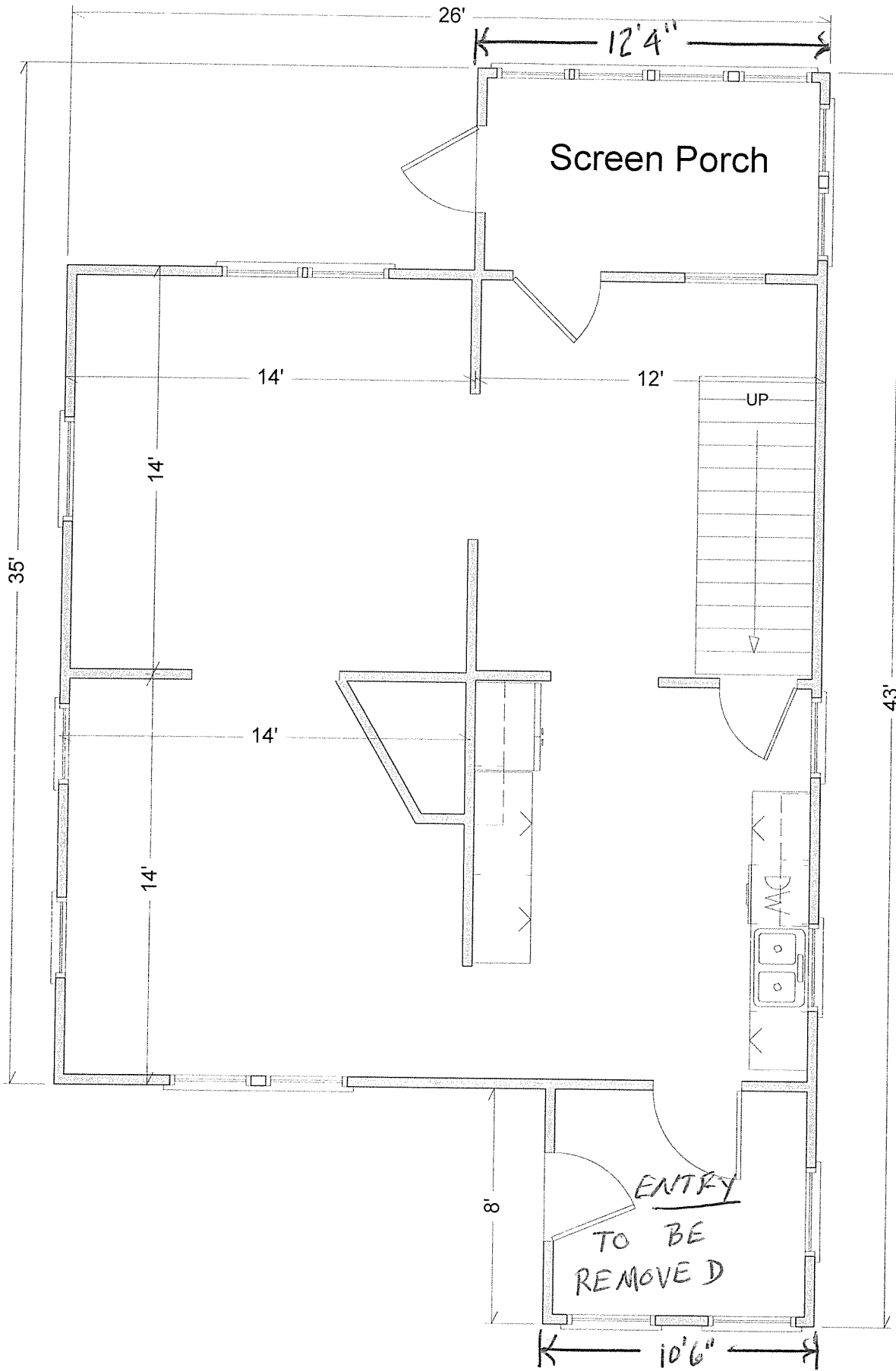




Reviewed for Code Compliance
Inspections Division
Approved with Conditions
12/17/14

Date:

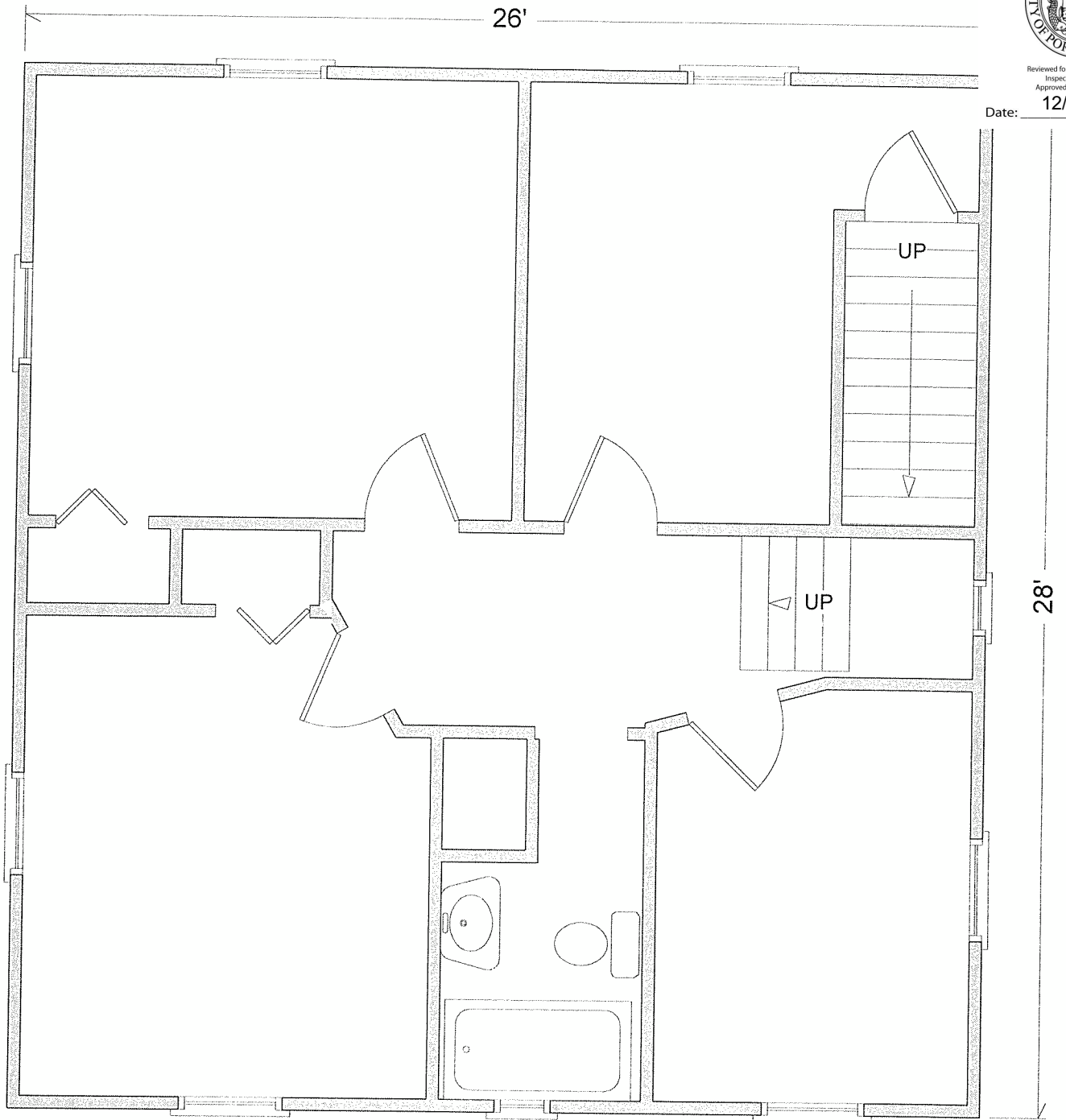


EXISTING CONDITION FIRST FLOOR



Reviewed for Code Compliance
Inspections Division
Approved with Conditions

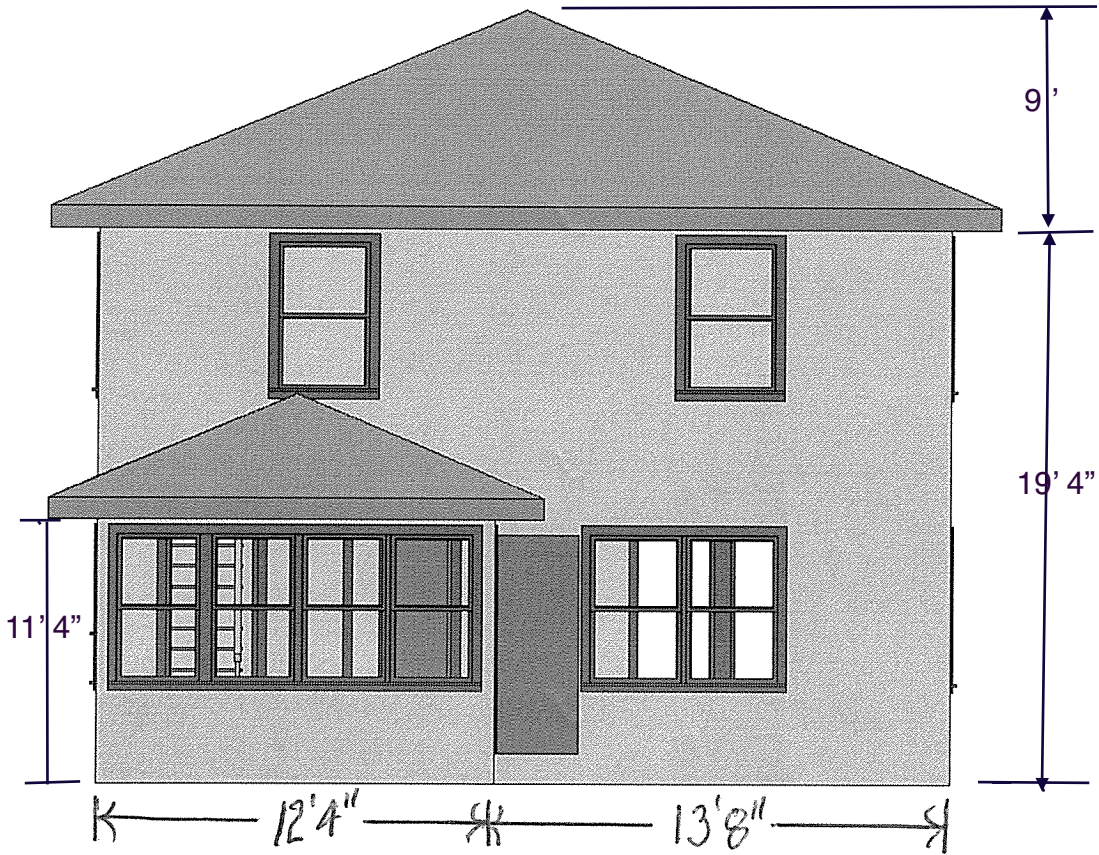
Date: 12/17/14



44 BARTLETT STREET
SECOND FLOOR
EXISTING CONDITION



Reviewed for Code Compliance
Inspections Division
Approved with Conditions
Date: 12/17/14



12'4" 13'8"

44 BARTLETT STREET

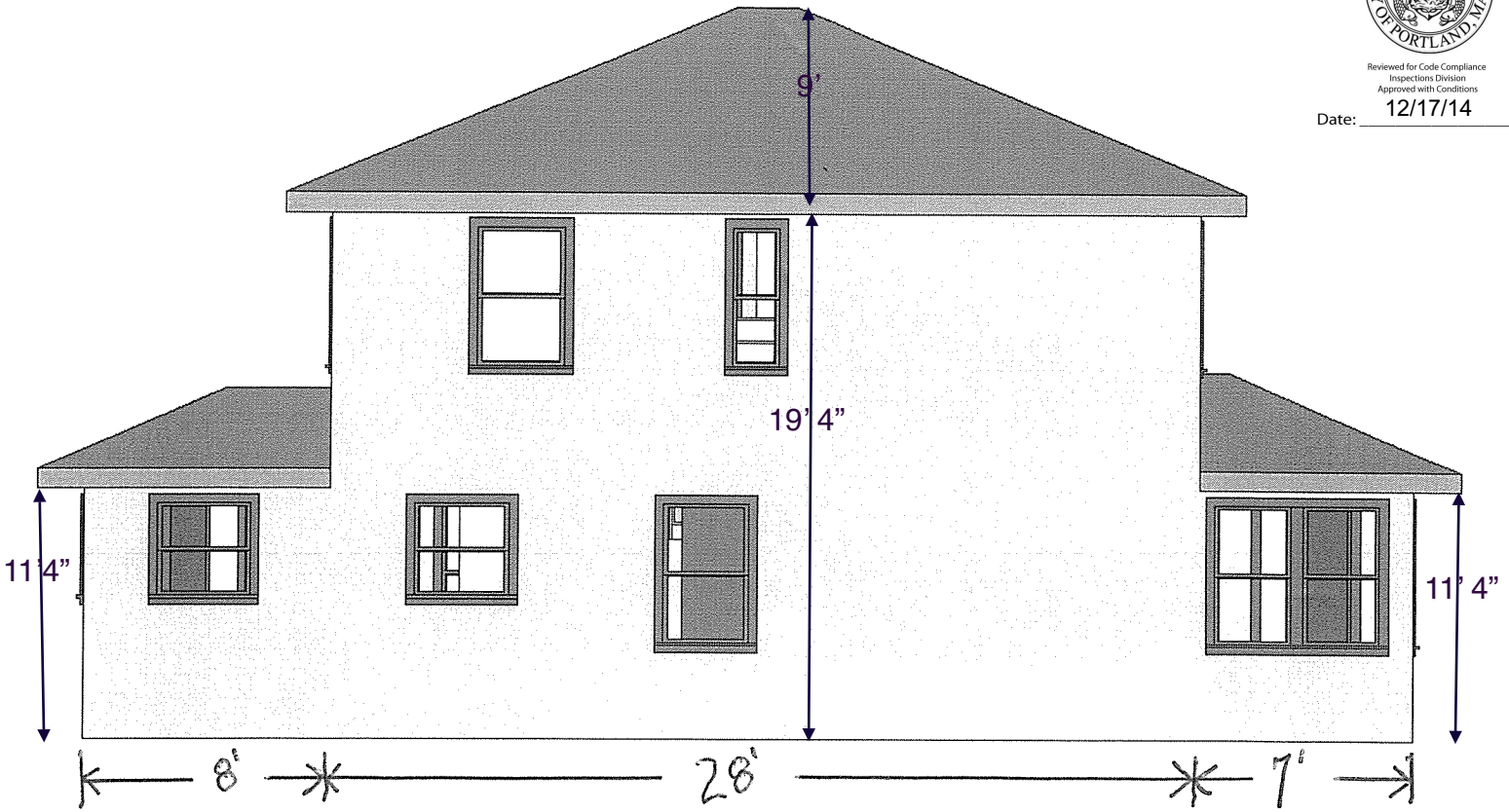
EXISTING: FRONT ELEVATION

Elevation dimensions include 2'4" foundation height. Drafting software will not draw foundations.



Reviewed for Code Compliance
Inspections Division
Approved with Conditions

Date: 12/17/14

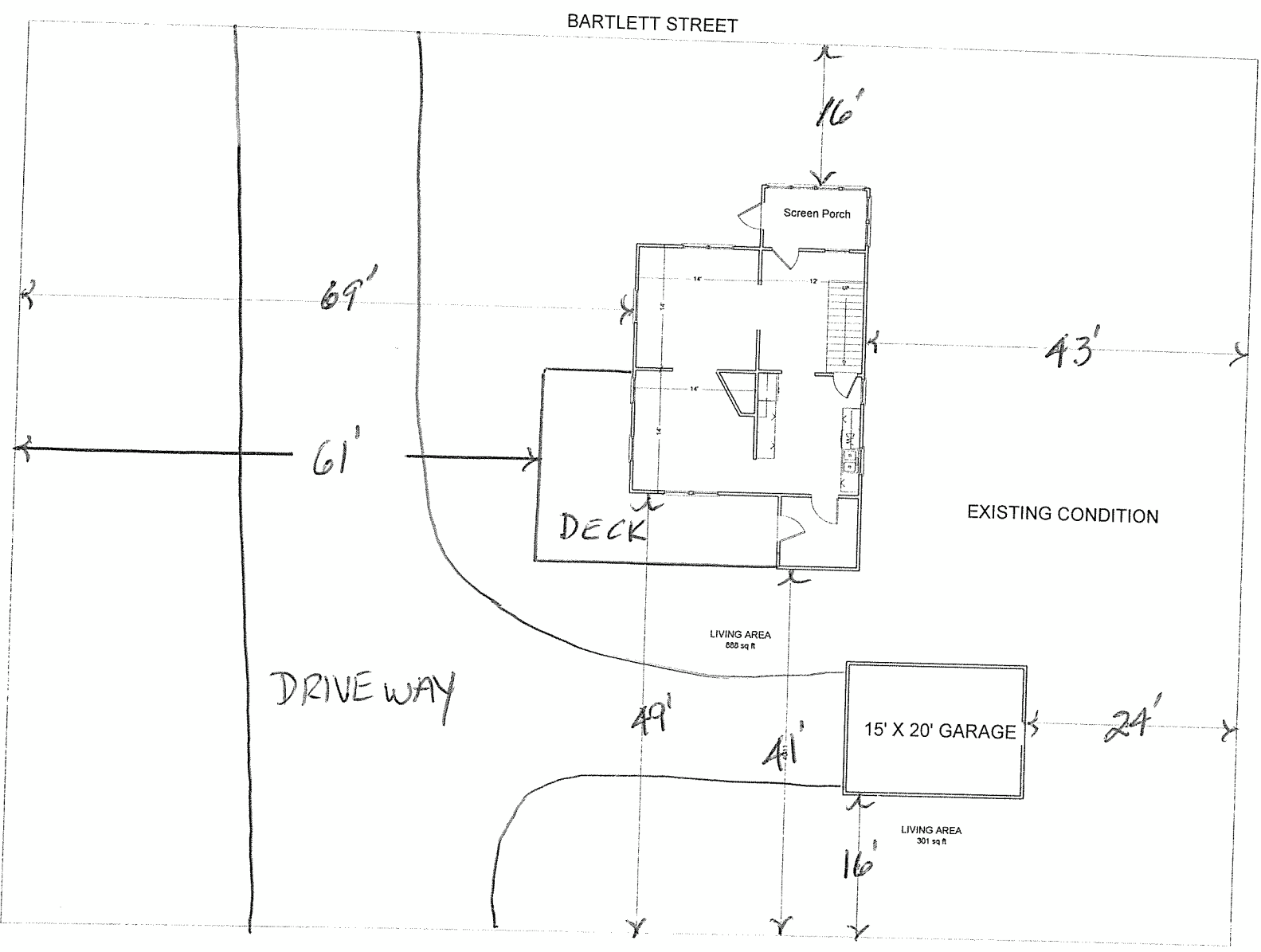


44 BARTLETT STREET
LEFT ELEVATION - EXISTING

Elevation dimensions include 2'4" foundation height. The drawing software will not draw foundations.



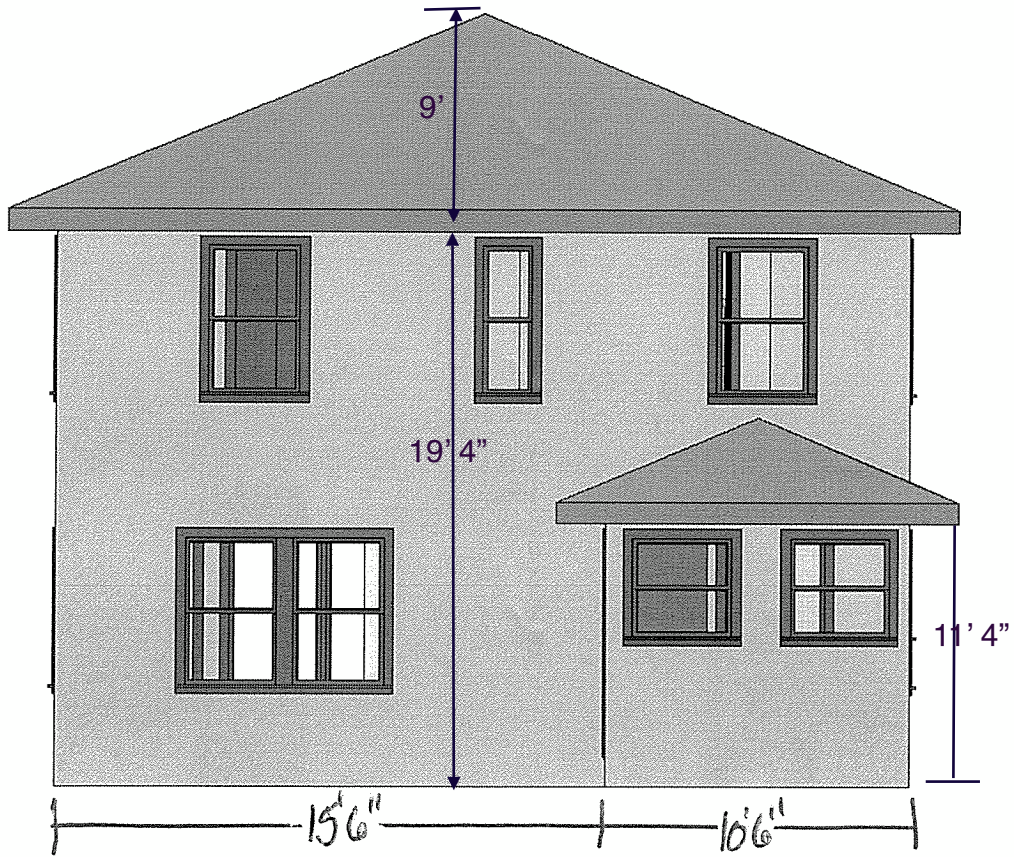
4A BARTLETT ST. LOT PLAN: EXISTING CONDITION





Reviewed for Code Compliance
Inspections Division
Approved with Conditions

Date: 12/17/14

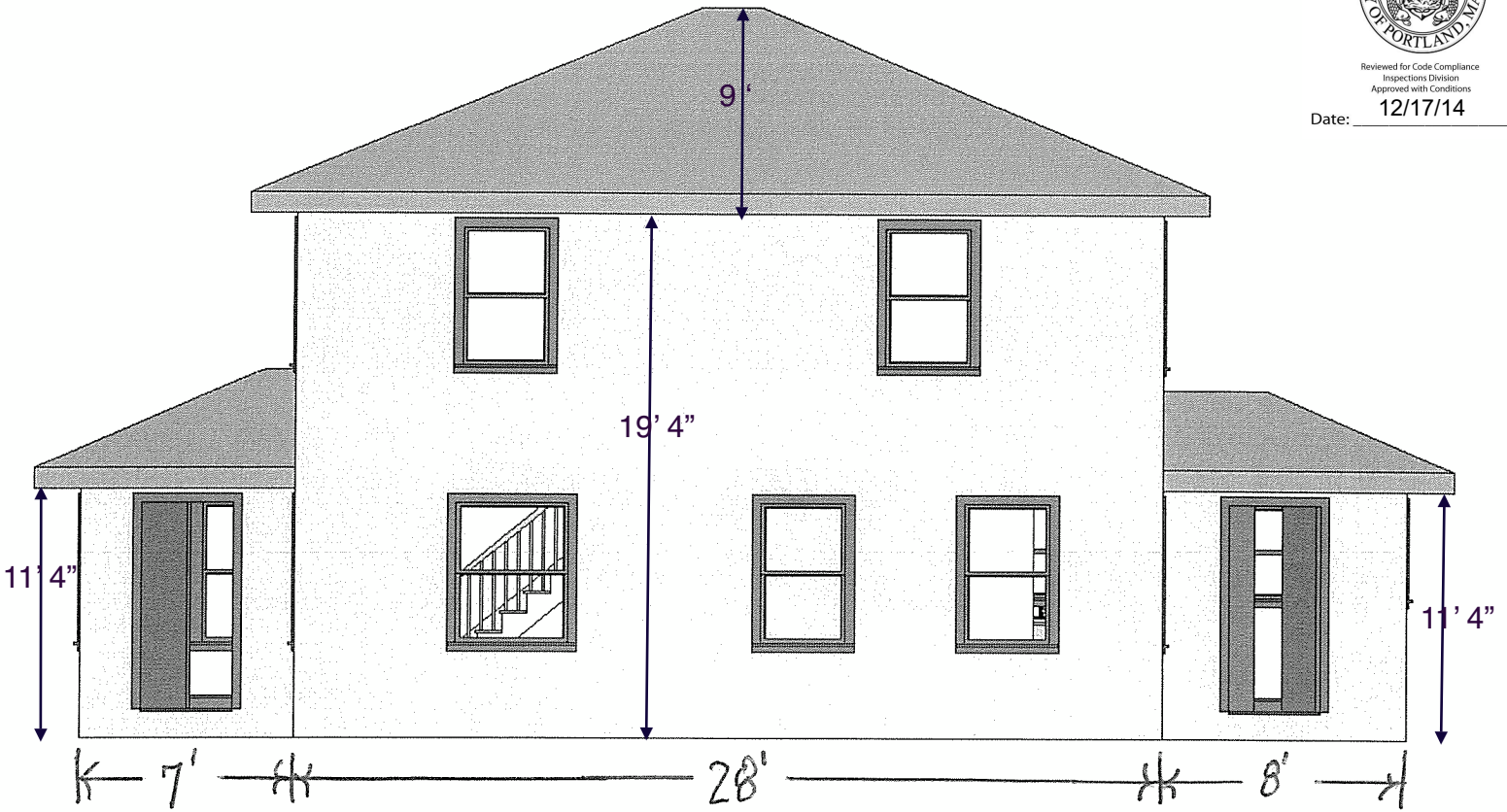


44 BARTLETT STREET
REAR ELEVATION - EXISTING

Elevation dimensions include 2'4" foundation height. Drafting software does not draw foundations.



Reviewed for Code Compliance
Inspections Division
Approved with Conditions
Date: 12/17/14



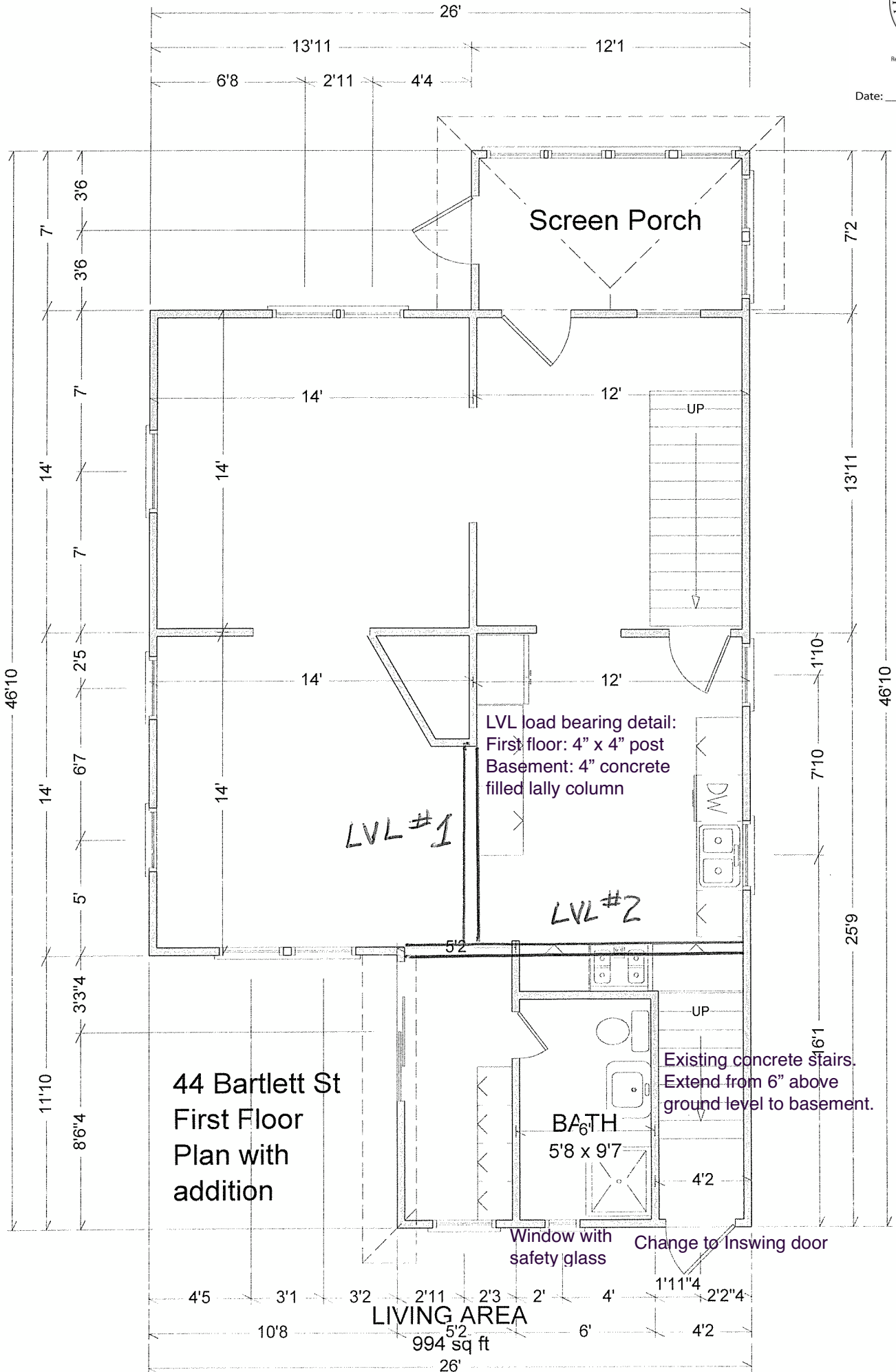
44 BARTLETT STREET
RIGHT ELEVATION - EXISTING

Elevation dimensions include 2'4" foundation height. The drafting software will not draw foundations.



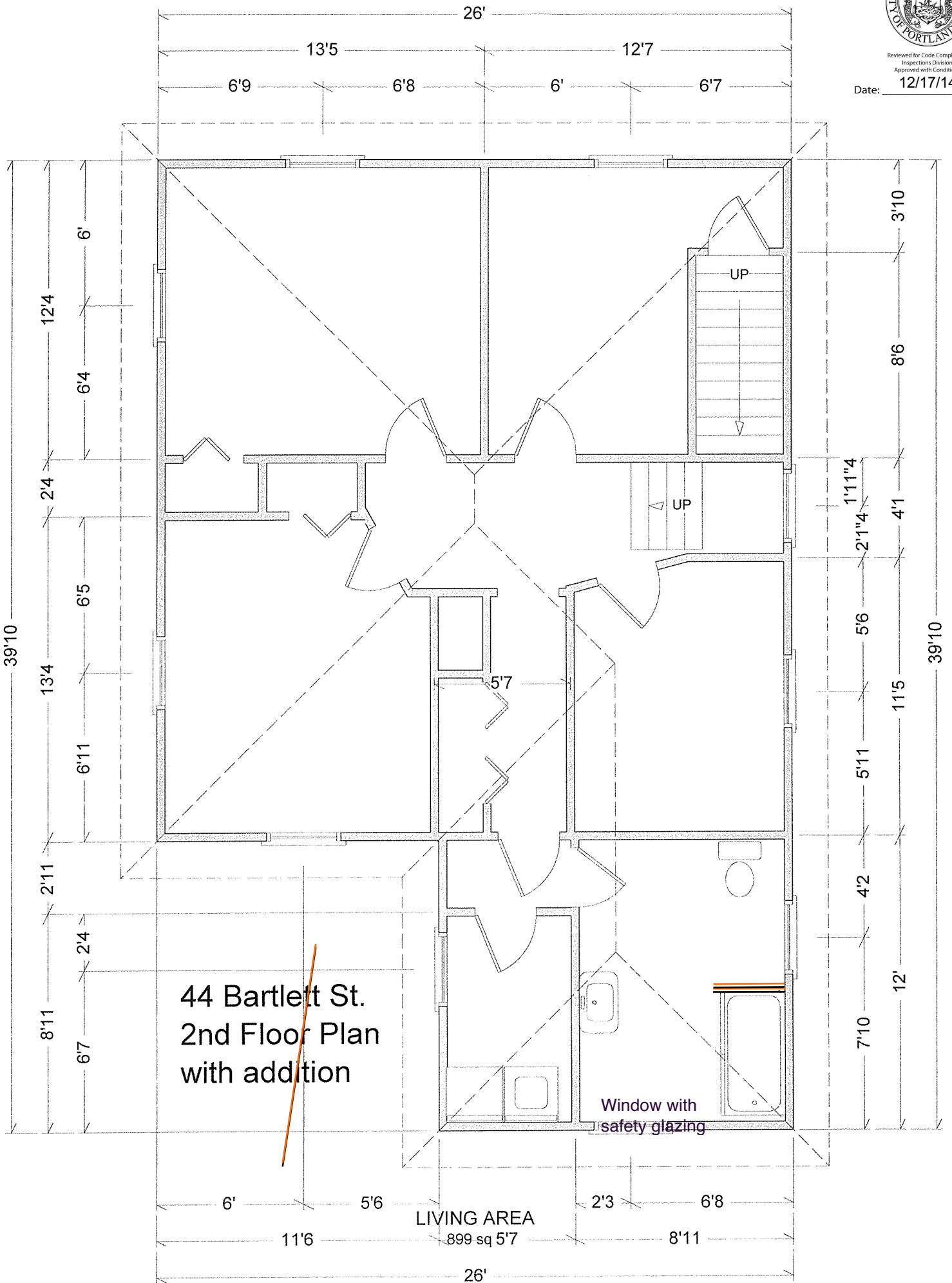
Reviewed for Code Compliance
Inspections Division
Approved with Conditions

Date: 12/17/14





Reviewed for Code Compliance
Inspections Division
Approved with Conditions
Date: 12/17/14

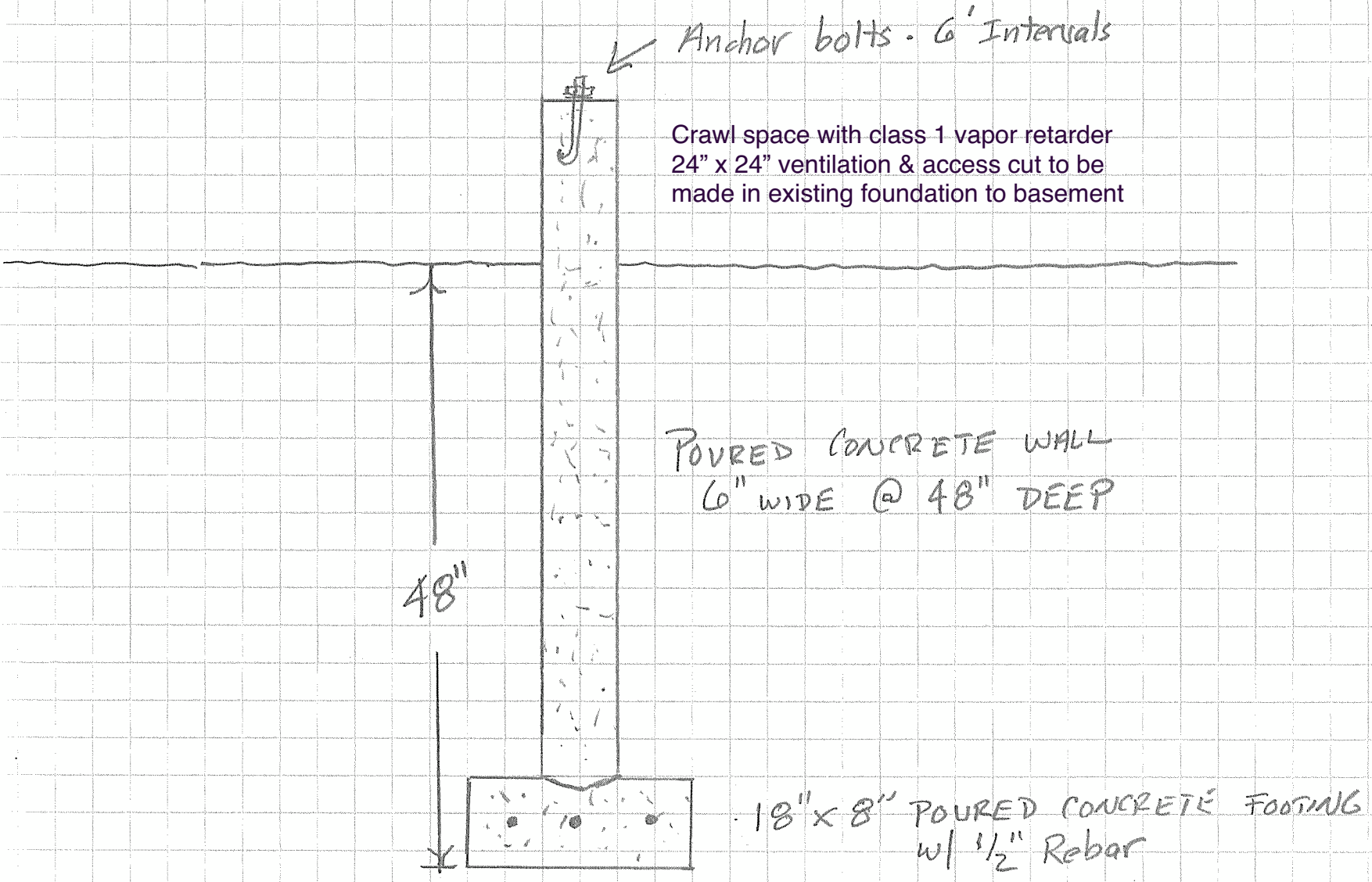


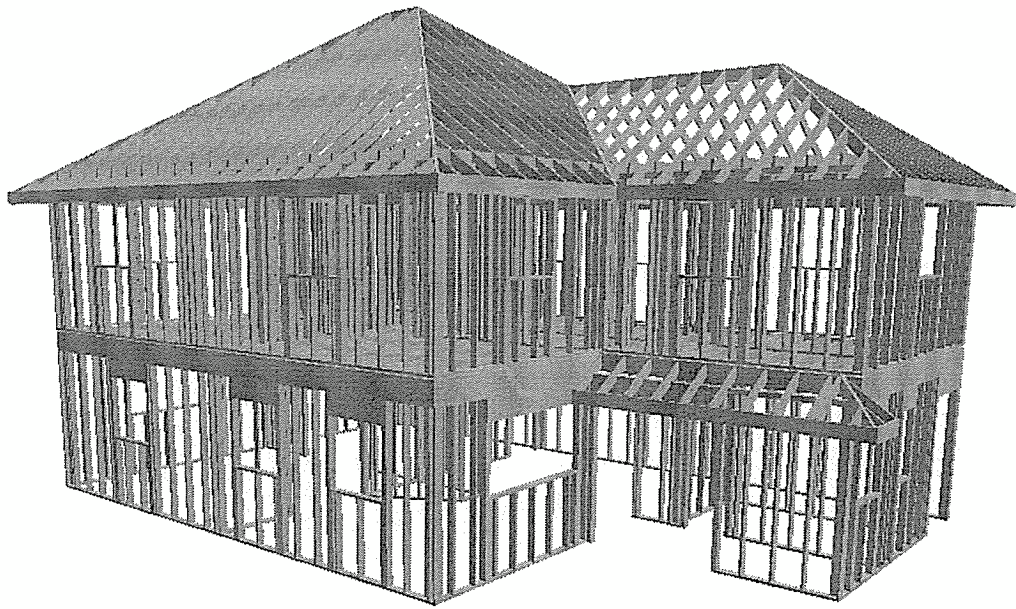
44 BARTLETT STREET FOUNDATION DETAIL - FROST WALL



Reviewed for Code Compliance
Inspectors Division
Approved with Conditions

Date: 12/17/14





44 BARTLETT STREET FRAMING DIAGRAM + DETAILS

- FLOORS: 2"X10"X12' @ 16" O.C.
- FLOOR SHEATING: 3/4" T+G ADVANTECH
- EXTERIOR WALLS: 2"X6" @ 16" O.C.
- WALL + ROOF SHEATING: 1/2" CDX PLYWOOD
- CEILING JOISTS: 2X6 @ 16" O.C.
- ROOF RAFTERS: 2X8 @ 16" O.C.
- WINDOW HEADERS: TRIPLE 2X10 WITH 1" THERMAL INSULATION
- EXTERIOR DOOR HEADERS: TRIPLE 2X12 WITH 1" THERMAL INSULATION
- LVL'S #1 AND #2: 3 - 1 3/4" X 9 1/2"
- INTERIOR WALLS: 2"X4" @ 16" O.C.

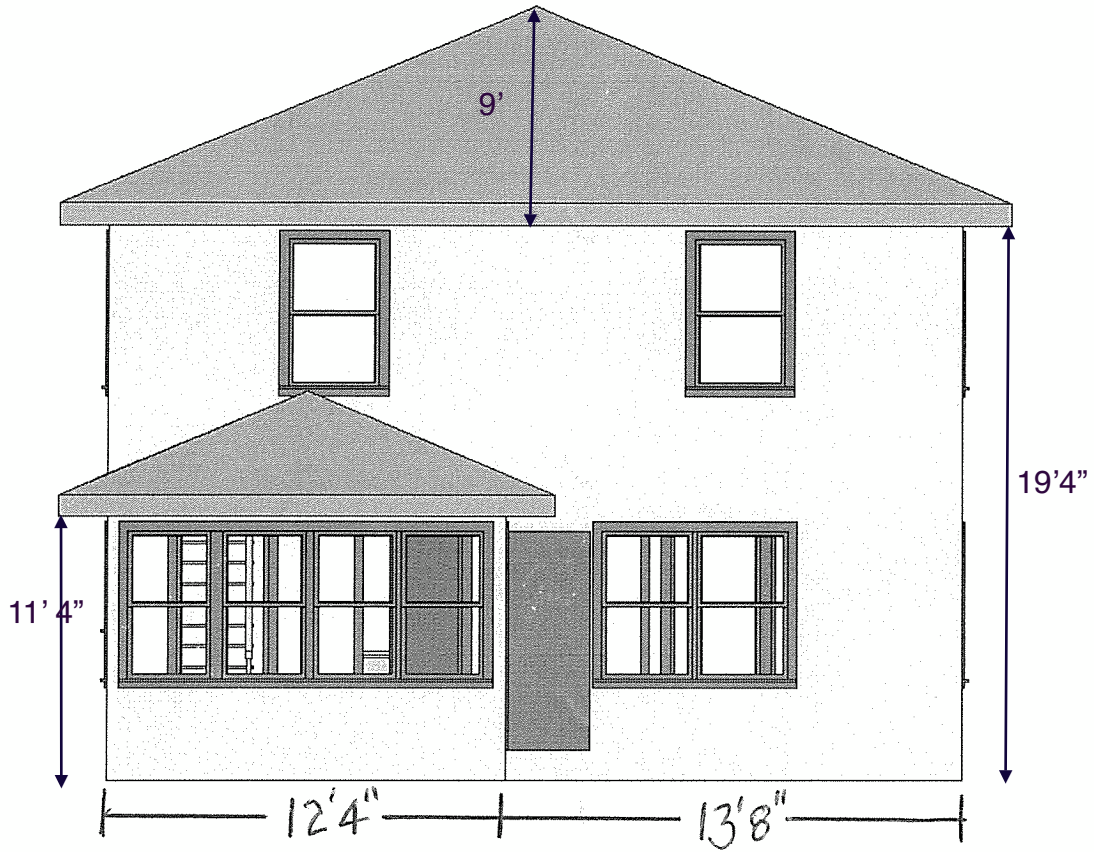
DOORS AND WINDOWS

- WINDOWS: VINYL DOUBLE HUNG, LOW'E, ARGON U-VALUE = .30
- EXTERIOR DOORS: PRE-HUNG FIBERGLASS W/INSULATED CORE
 - 1 - 6'0" X 6'8" DOUBLE DOOR
 - 1 - 3'0" X 6'8"



Reviewed for Code Compliance
Inspections Division
Approved with Conditions

Date: 12/17/14



44 BARTLETT STREET

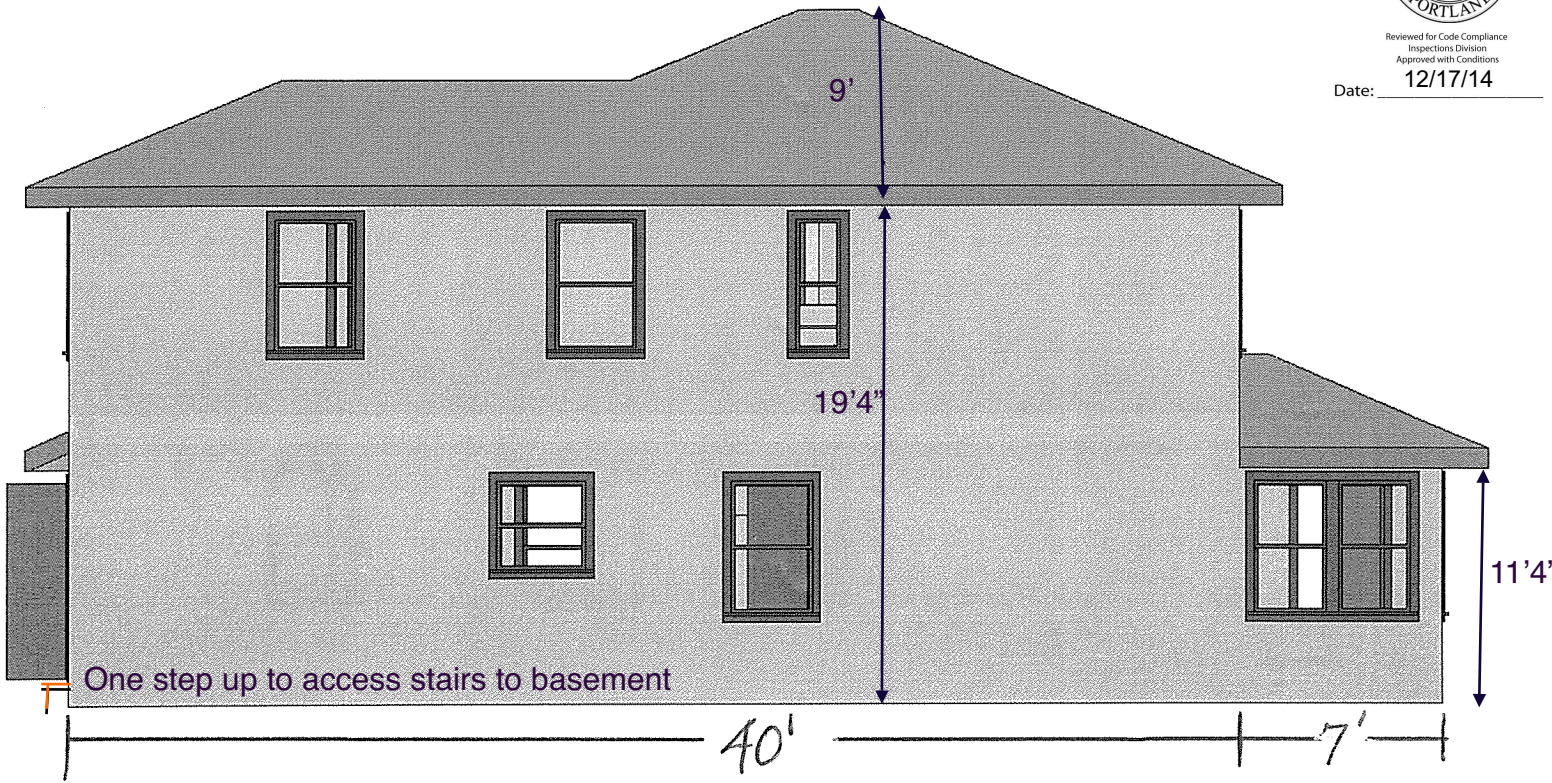
FRONT ELEVATION

Elevation dimensions include 2'4" foundation height. Drafting software does not draw foundations.



Reviewed for Code Compliance
Inspections Division
Approved with Conditions

Date: 12/17/14

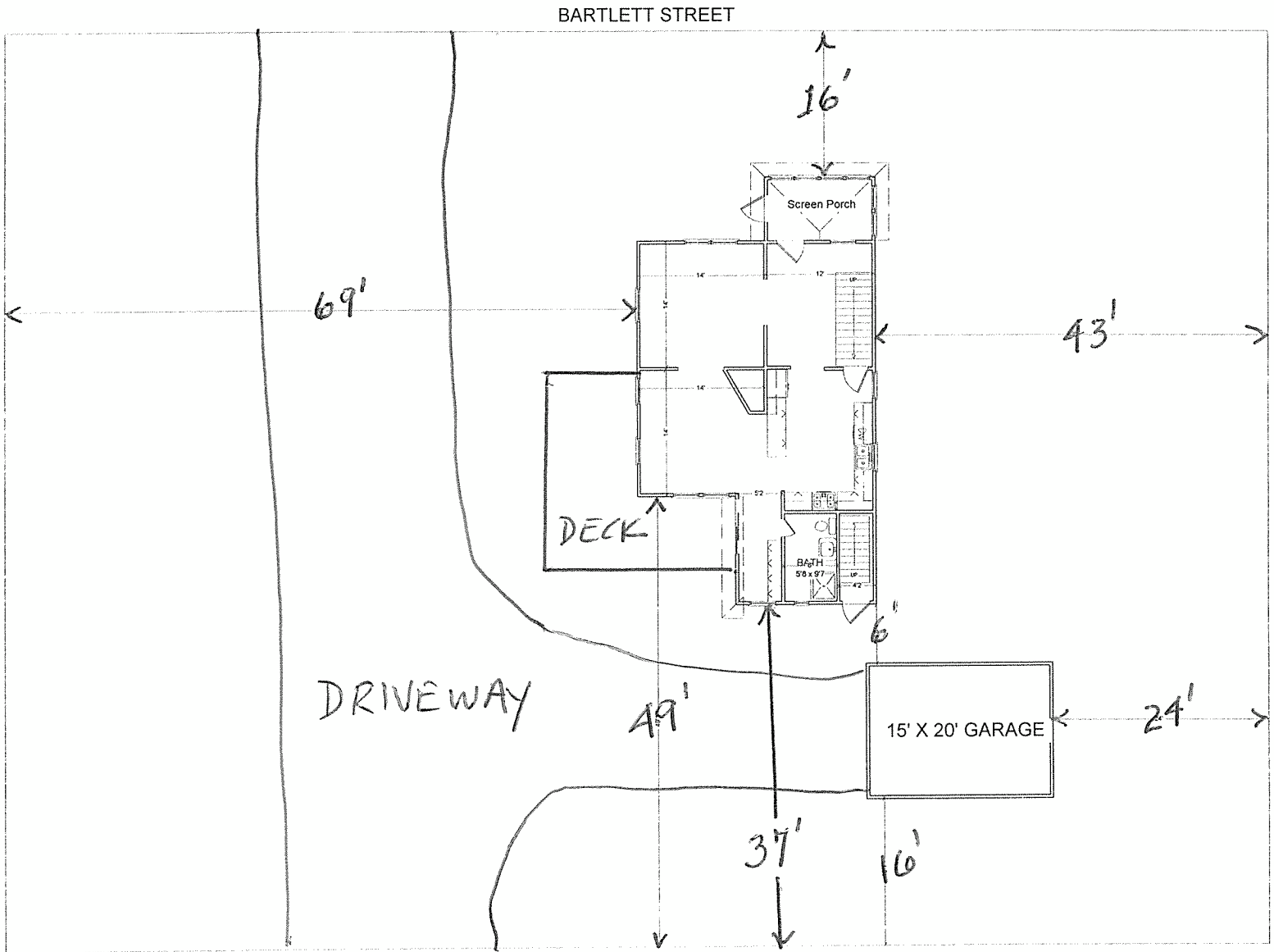


44 BARTLETT STREET
LEFT SIDE ELEVATION WITH PROPOSED ADDITION

44 BARTLETT ST.
LOT PLAN WITH PROPOSED ADDITION



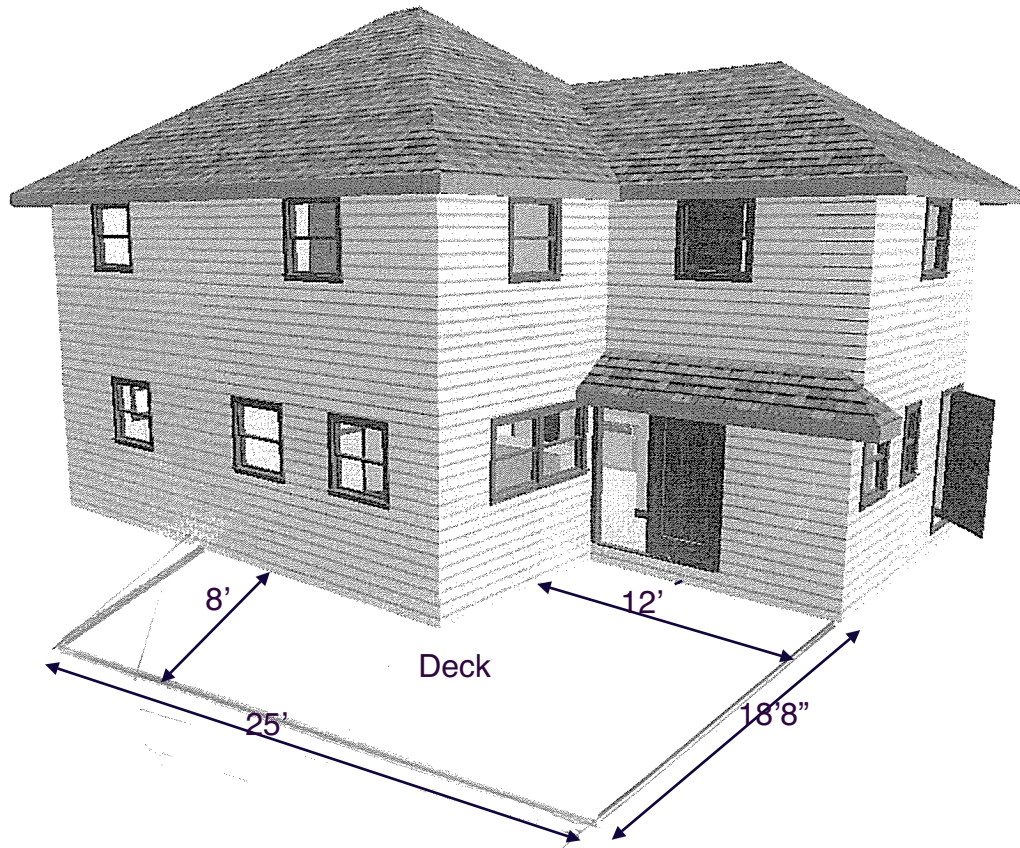
Reviewed for Code Compliance
Inspections Division
Approved with Conditions
Date: 12/17/14





Reviewed for Code Compliance
Inspections Division
Approved with Conditions

Date: 12/17/14



44 BARTLETT ST.

OVERVIEW WITH PROPOSED ADDITION

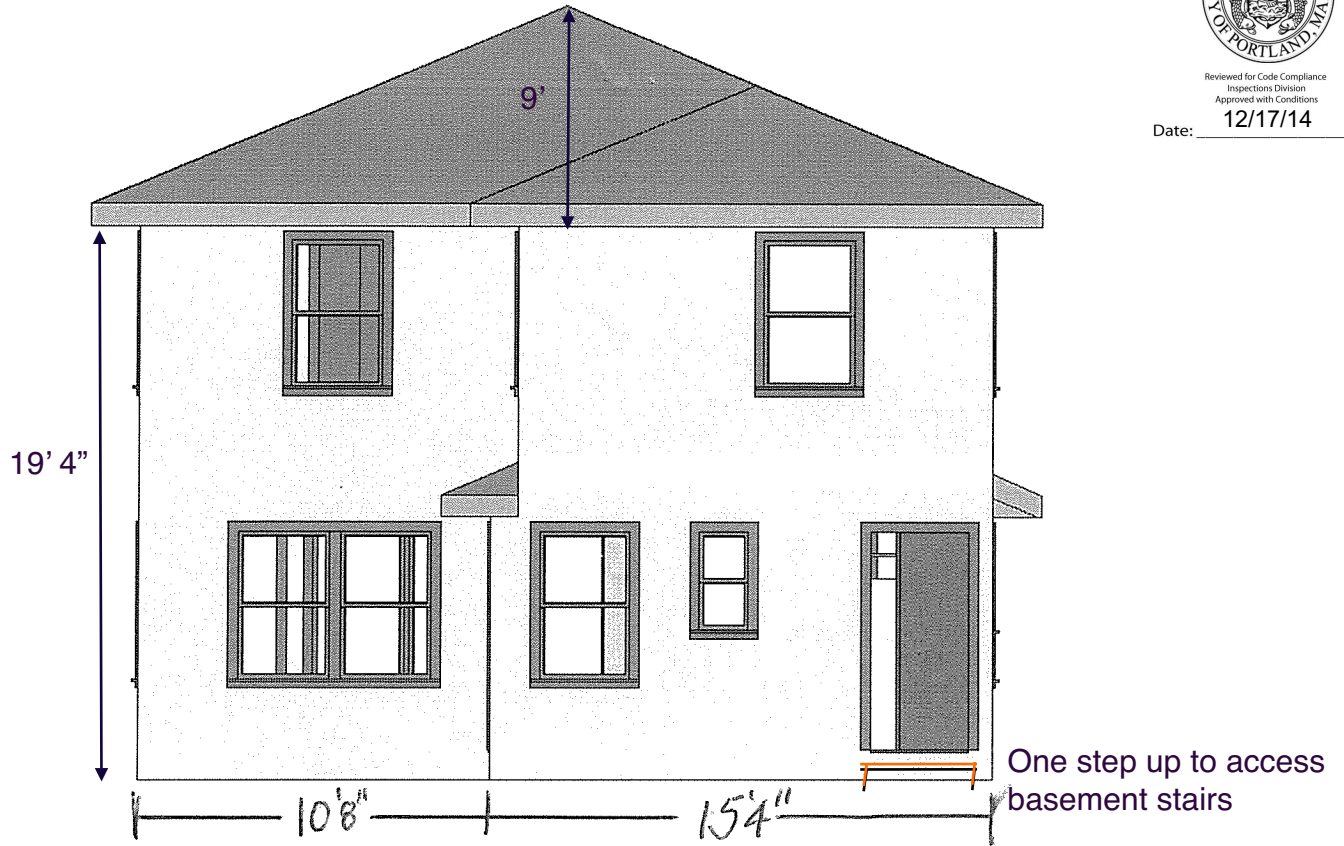
INSULATION INFORMATION

- ALL SPRAY FOAM
- 1ST FLOOR: R-30
- WALLS: R-35
- CEILING: R-49



Reviewed for Code Compliance
Inspections Division
Approved with Conditions

Date: 12/17/14

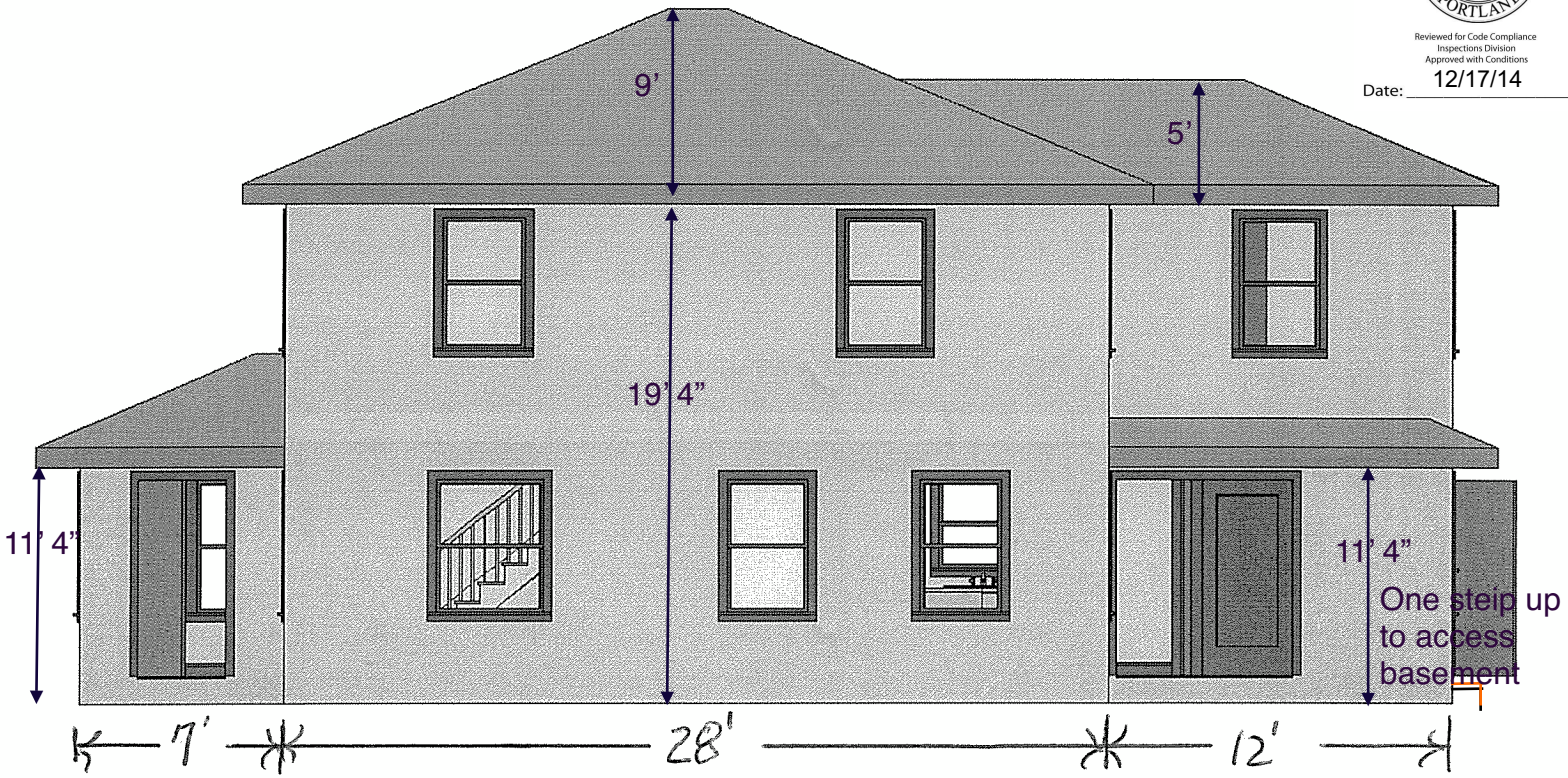


44 BARTLETT STREET
REAR ELEVATION WITH PROPOSED ADDITION

Elevation dimensions include 2'4" foundation height. Drafting software does not draw foundations.



Reviewed for Code Compliance
Inspections Division
Approved with Conditions
Date: 12/17/14



44 BARTLETT STREET
RIGHT SIDE ELEVATION WITH PROPOSED ADDITION

Elevation dimensions include 2'4" foundation height. Drafting software does not draw foundations.