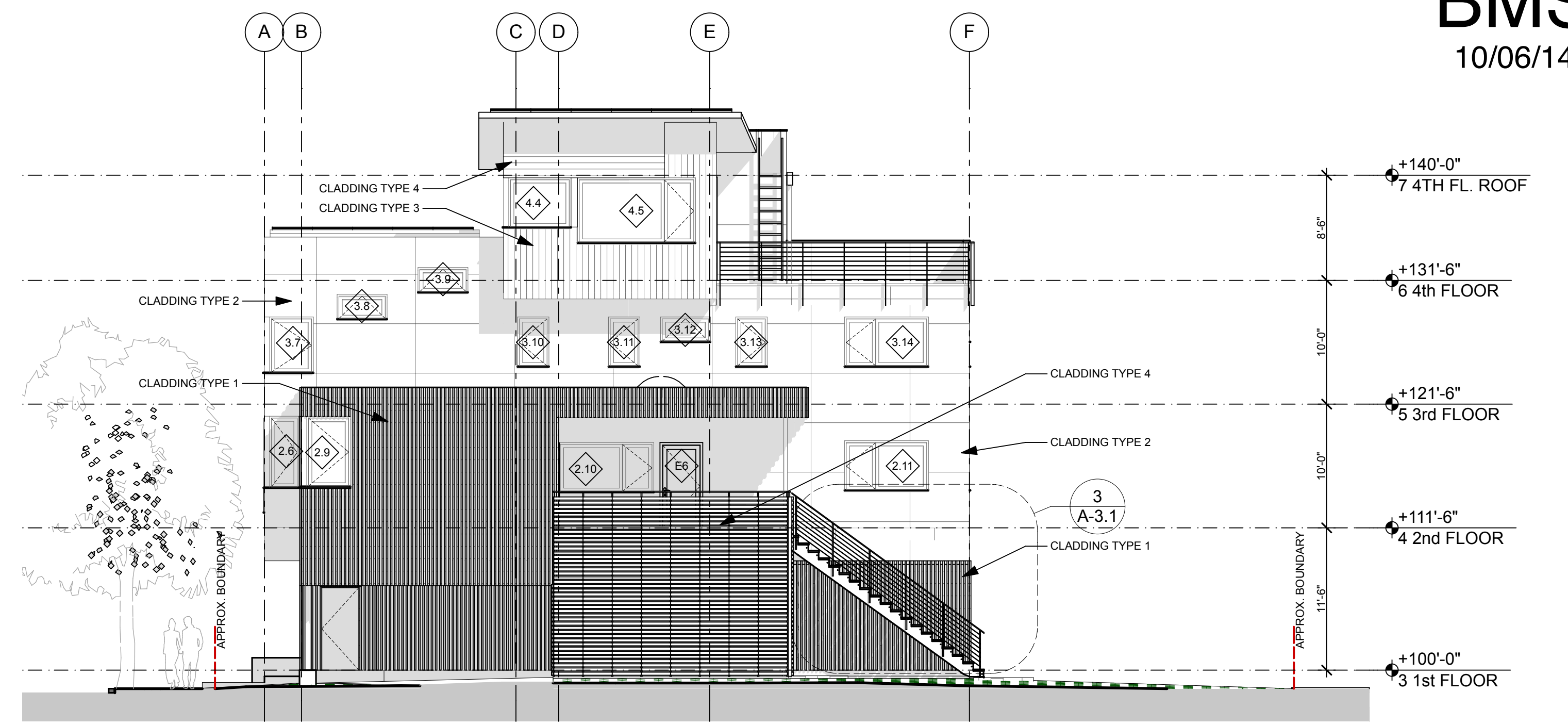
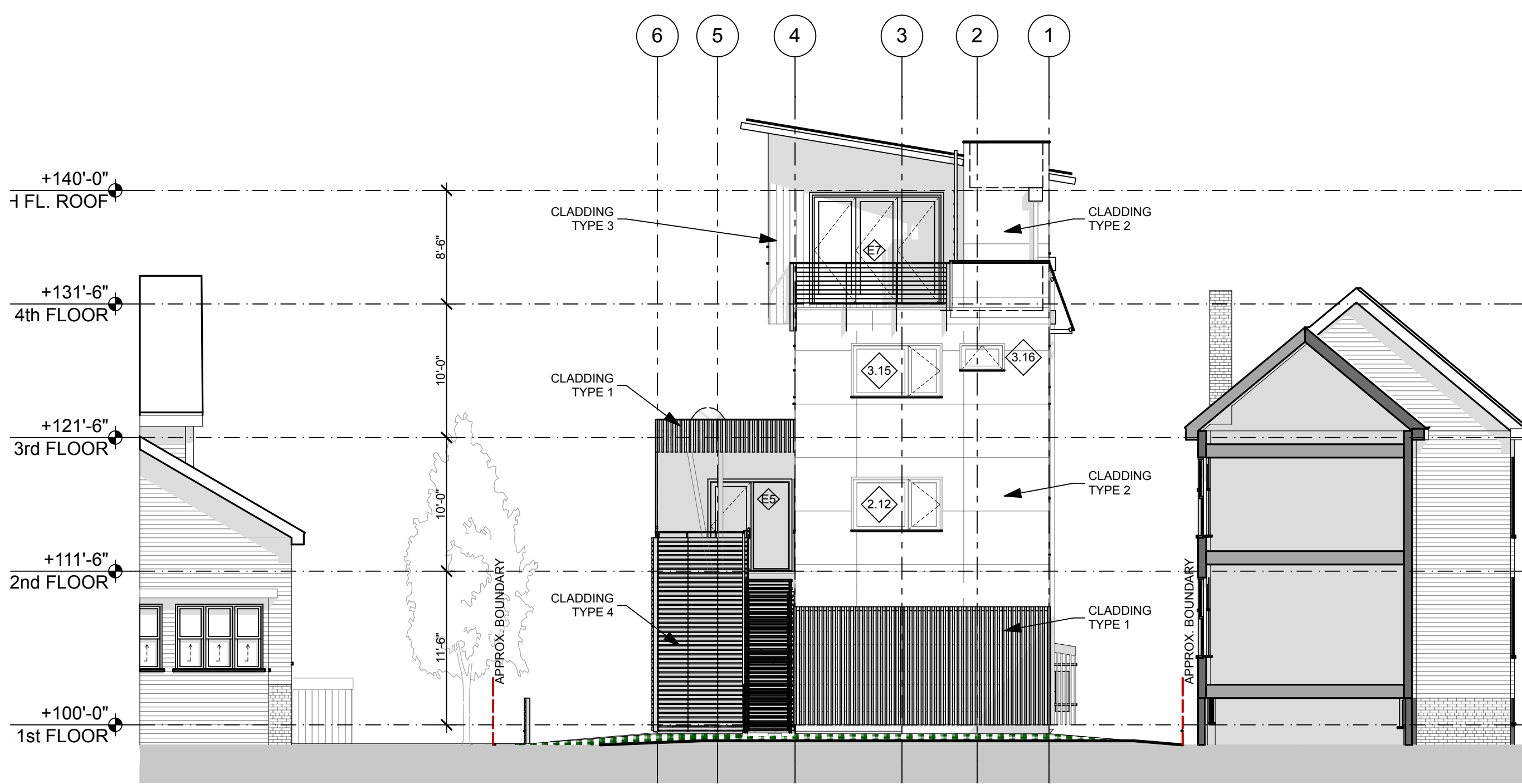


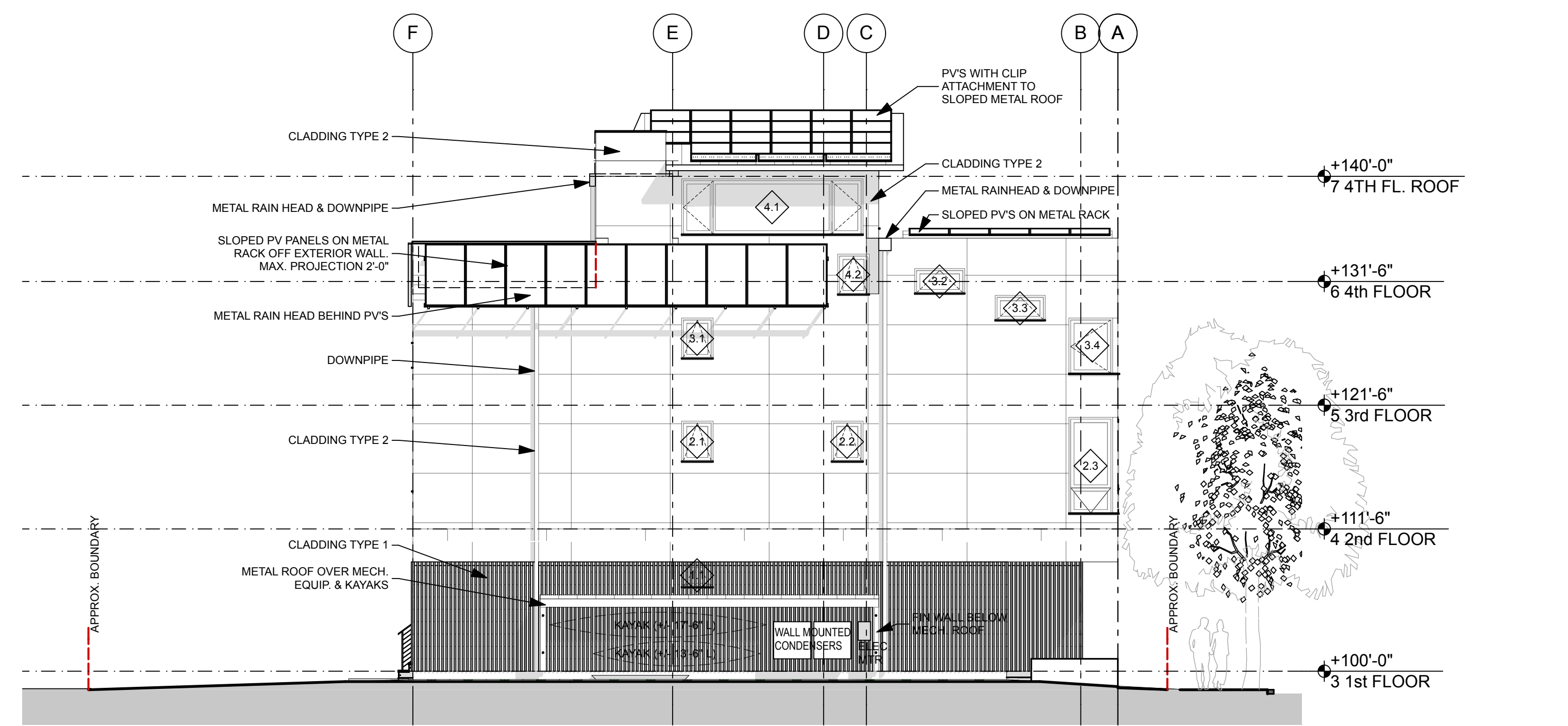
1 SOUTH-EAST (QUEBEC STREET ELEVATION)
SCALE: 1/8" = 1'-0"



2 NORTH-EAST
SCALE: 1/8" = 1'-0"

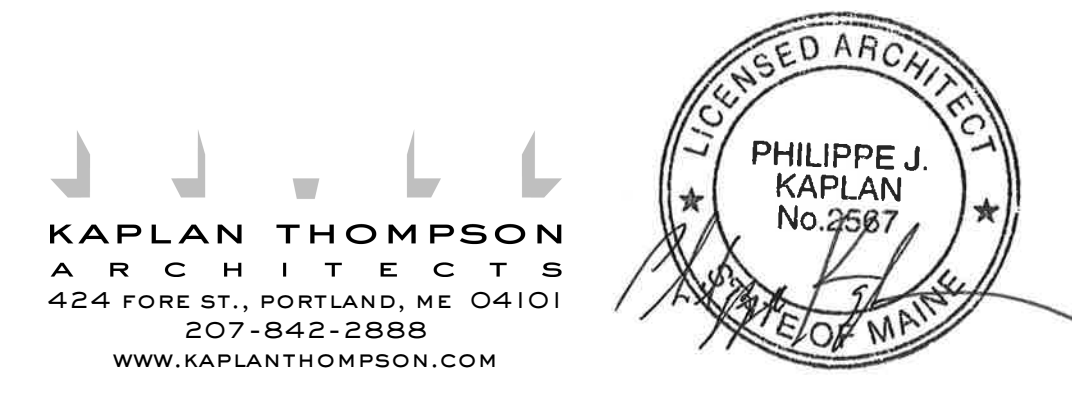


3 NORTH-WEST (REAR ELEVATION)
SCALE: 1/8" = 1'-0"



4 SOUTH-WEST
SCALE: 1/8" = 1'-0"

NOTES
 CLADDING TYPE 1: FIBER CEMENT BATTENS (VERTICAL), PAINT FINISH
 CLADDING TYPE 2: FIBER CEMENT PANELS (4'x8'), PAINT FINISH
 CLADDING TYPE 3: CEDAR BOARDS (VERT.), NATURAL FINISH
 CLADDING TYPE 4: CEDAR BOARDS (HORIZ.), NATURAL FINISH



KAPLAN THOMPSON
 ARCHITECTS
 424 FORE ST., PORTLAND, ME 04101
 207-842-2888
 WWW.KAPLANTHOMPSON.COM

ISSUED FOR PERMIT
 NOT FOR CONSTRUCTION

PROJECT:
 NEW HOUSE, FOR
 CRAIG BRAMLEY & KIM SIMMONS, AT
 71 QUEBEC STREET, PORTLAND, ME 04101

DRAWING: PROPOSED EXTERIOR ELEVATIONS
 SCALE: _____ DRAWN BY: RTL
 DATE: OCTOBER 06 REVISED: _____

A-2.1