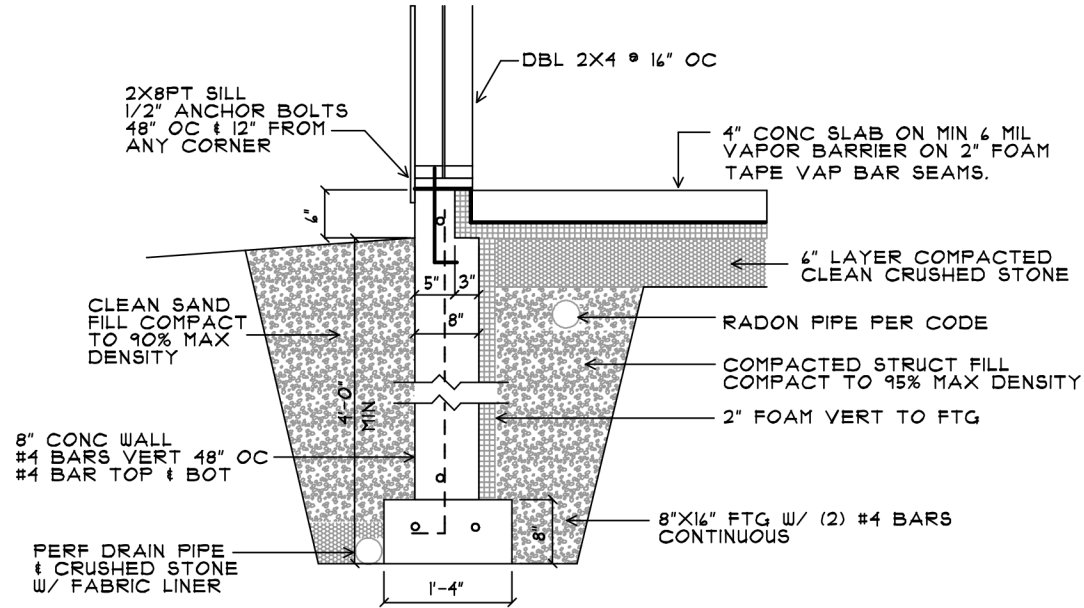
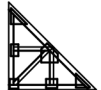



CONCRETE NOTES:

1. CONCRETE TO BE 4000 PSI AT 28 DAYS.
3/4" STONE, 5" SLUMP. USE MECHANICAL VIBRATION DURING PLACEMENT.
2. CURE SLAB FOR PERIOD OF 7 DAYS. USE WET CURE OR SEAL CURE METHODS. KEEP FROM OVERHEATING AND DO NOT USE BLACK PLASTIC COVER.



1 TYPICAL FOUNDATION WALL
SK2

 <p>WILL KESSLER - LITTLE HOUSE</p> <p>Civil & Structural Design</p> <p>627 Western Road Warren, ME 04864</p>	<p>Randy D. Scamfer, P.E.</p> <p>207-273-3021 FAX 273-3021</p> 	DATE : 9/26/17
		<p>FOR REVIEW ONLY NOT FOR CONSTRUCTION</p> <p>SCALE: 1/2" = 1'0"</p>
		<p>SHEET</p> <p>SK2</p>