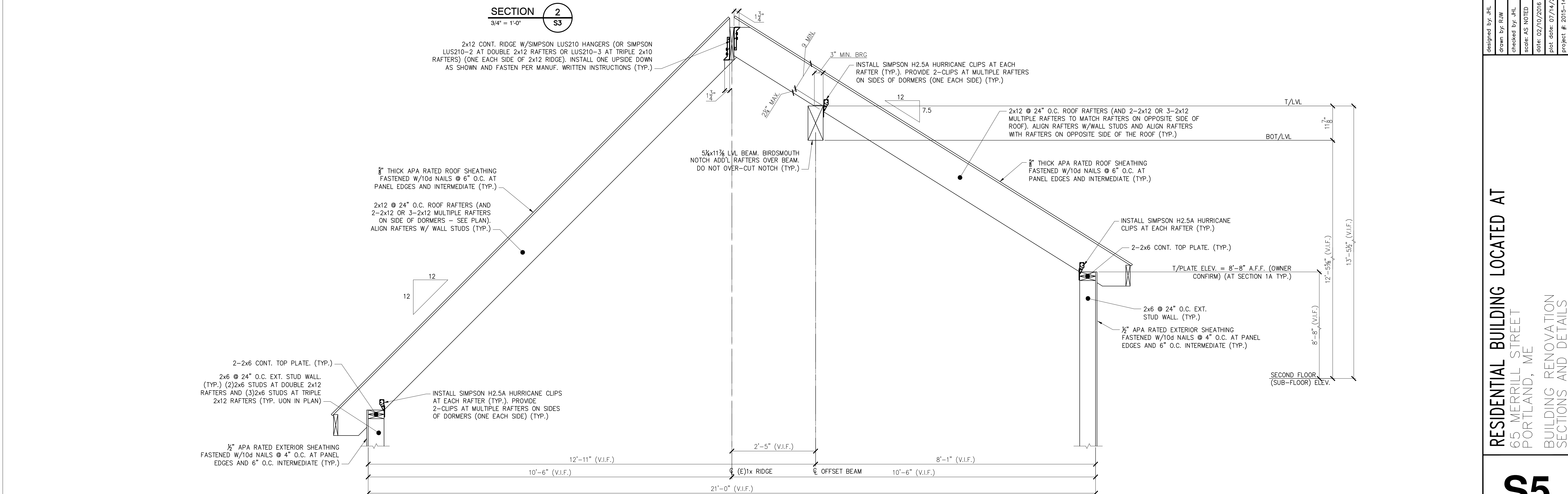
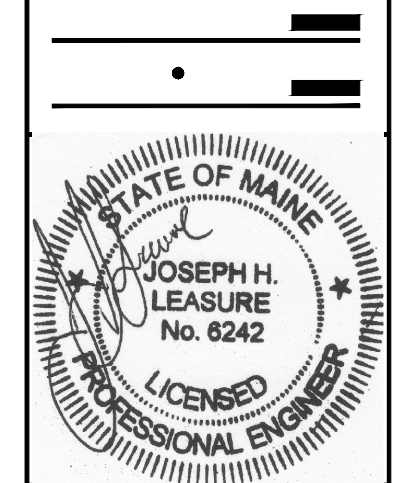


**SECTION 2**  
3/4" = 1'-0"  
S3



**SECTION 2A**  
3/4" = 1'-0"  
S3

**L & L STRUCTURAL ENGINEERING SERVICES, INC.**  
SIX Q. STREET  
SOUTH PORTLAND, MAINE 04106  
PHONE: (207) 767-4830  
FAX: (207) 799-5432  
EMAIL: JLEASURE@L-ENG.COM



rev.	date	description	approved

**RESIDENTIAL BUILDING LOCATED AT**  
65 MERRILL STREET  
PORTLAND, ME  
BUILDING RENOVATION  
SECTIONS AND DETAILS

**S5**

THESE DRAWINGS HAVE BEEN DEVELOPED BY L&L STRUCTURAL ENGINEERING SERVICES, INC. FOR THE TITLED SET ONLY. THE DRAWINGS ARE THE SOLE PROPERTY OF L&L ENGINEERING SERVICES, INC. AND THEY SHALL NOT BE USED, LENT, COPIED OR ALTERED WITHOUT THE WRITTEN CONSENT OF L&L STRUCTURAL ENGINEERING SERVICES, INC.