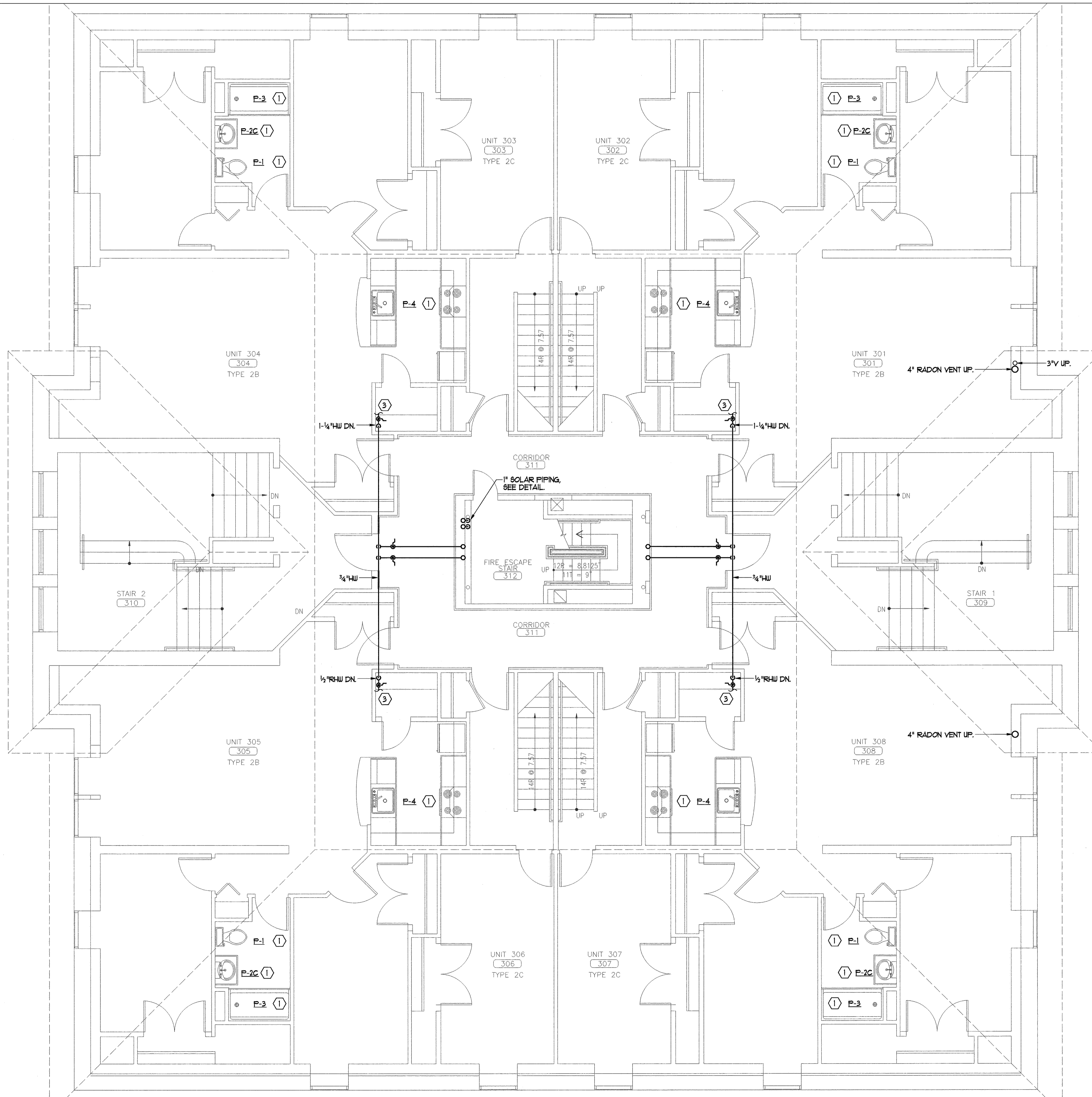


PLUMBING NOTES -

- ① EXISTING FIXTURE REPLACED, CONNECT TO EXISTING PLUMBING PIPING.
- ② EXISTING FIXTURE RELOCATED AND REPLACED, CONNECT TO EXISTING PLUMBING PIPING.
- ③ EXISTING WATER HEATER LOCATION, CONNECT 3/4" HW TO EXISTING HOT WATER.
- ④ CONNECT NEW FIXTURE TO NEARBY EXISTING PLUMBING PIPING.



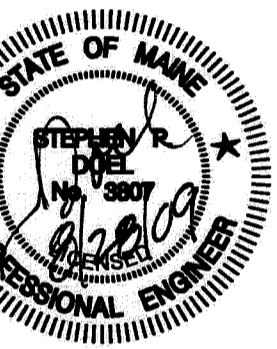
1 THIRD FLOOR PLUMBING PLAN
 REFERENCED FROM:

SCALE: 1/4" = 1'-0"



CWS Architects
 Architecture
 Space Planning
 Value Design

434 Cumberland Avenue
 Portland, ME 04101
 Phone: (207)774-4441
 Fax: (207)774-4016
 www.CWSarch.com



Dweller:
Avesta Munjoy Commons, LP.

307 Cumberland Ave.
 Portland, Maine 04101
 TEL: 207-553-7780

Munjoy Commons Apartments

Portland, Maine

Project No: 07429

Drawing Title:
**EMERSON
 THIRD FLOOR
 PLUMBING PLAN**

Scale: 1/4" = 1'-0"
 Date: August 28, 2009

- Revisions:
- △
 - △
 - △
 - △
 - △

Drawing Number:
**EMERSON
 M2.4**