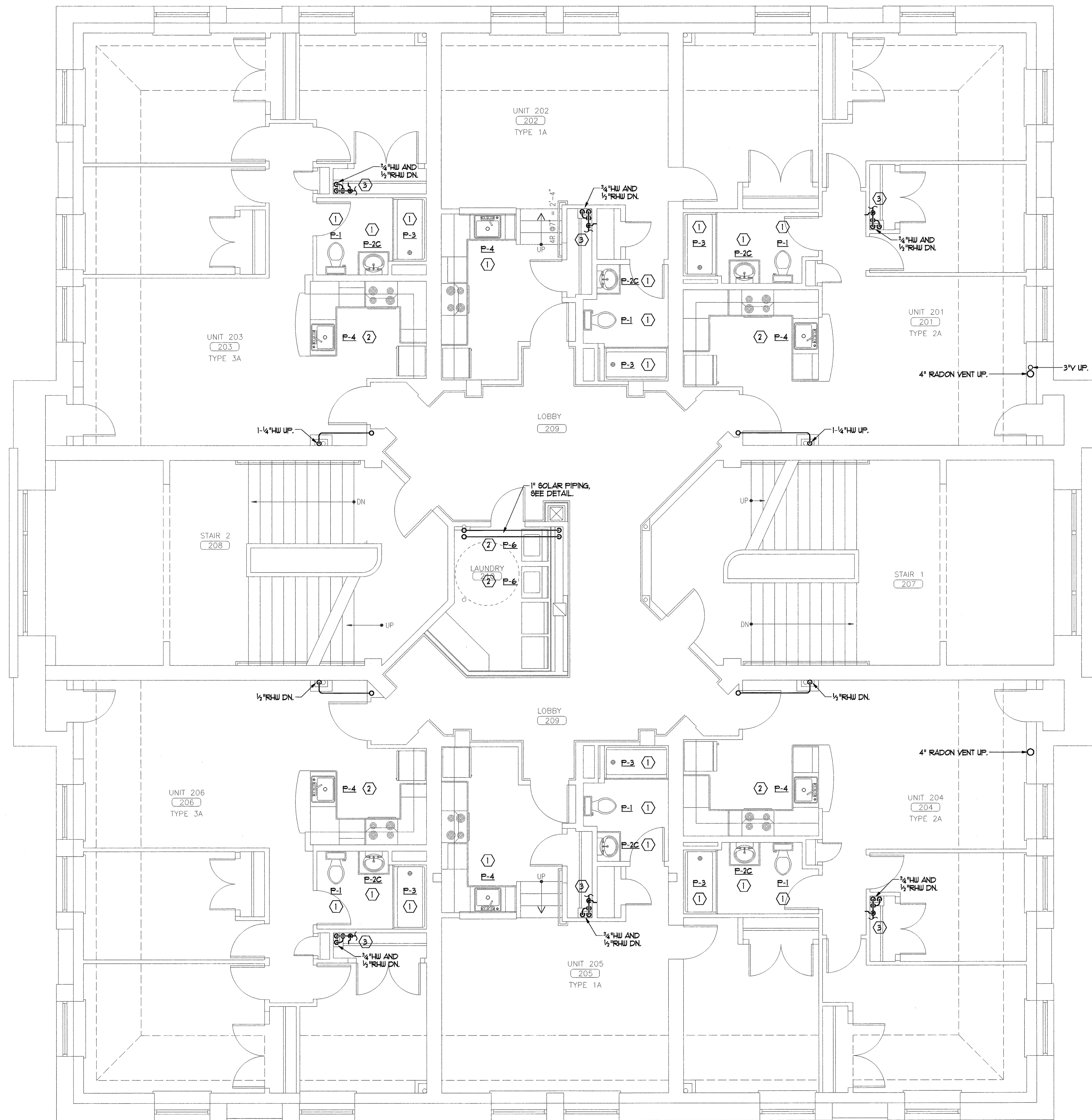


PLUMBING NOTES -

- ① EXISTING FIXTURE REPLACED, CONNECT TO EXISTING PLUMBING PIPING.
- ② EXISTING FIXTURE RELOCATED AND REPLACED, CONNECT TO EXISTING PLUMBING PIPING.
- ③ EXISTING WATER HEATER LOCATION, CONNECT 3/4" HW TO EXISTING HOT WATER.
- ④ CONNECT NEW FIXTURE TO NEARBY EXISTING PLUMBING PIPING.



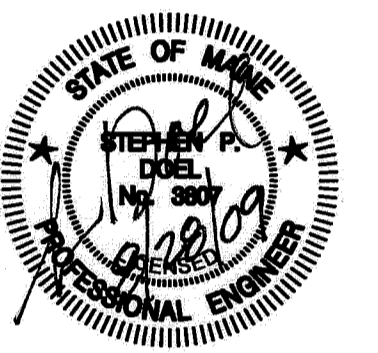
CWS Architects

Architecture
Space Planning
Value Design

434 Cumberland Avenue
Portland, ME 04101
Phone: (207)774-4441
Fax: (207)774-4016
www.CWSarch.com



**BENNETT
ENGINEERING**
MECHANICAL • ELECTRICAL
(207) 865-9475



Dwener:
**Avesta Munjoy
Commons, LP.**

307 Cumberland Ave.
Portland, Maine 04101
TEL. 207-553-7780

**Munjoy Commons
Apartments**

Portland, Maine

Project No: 07429

Drawing Title:

**EMERSON
SECOND FLOOR
PLUMBING PLAN**

Scale: 1/4" = 1'-0"

Date: August 28, 2009

Revisions:

- △
- △
- △
- △
- △
- △

Drawing Number:
**EMERSON
M2.3**