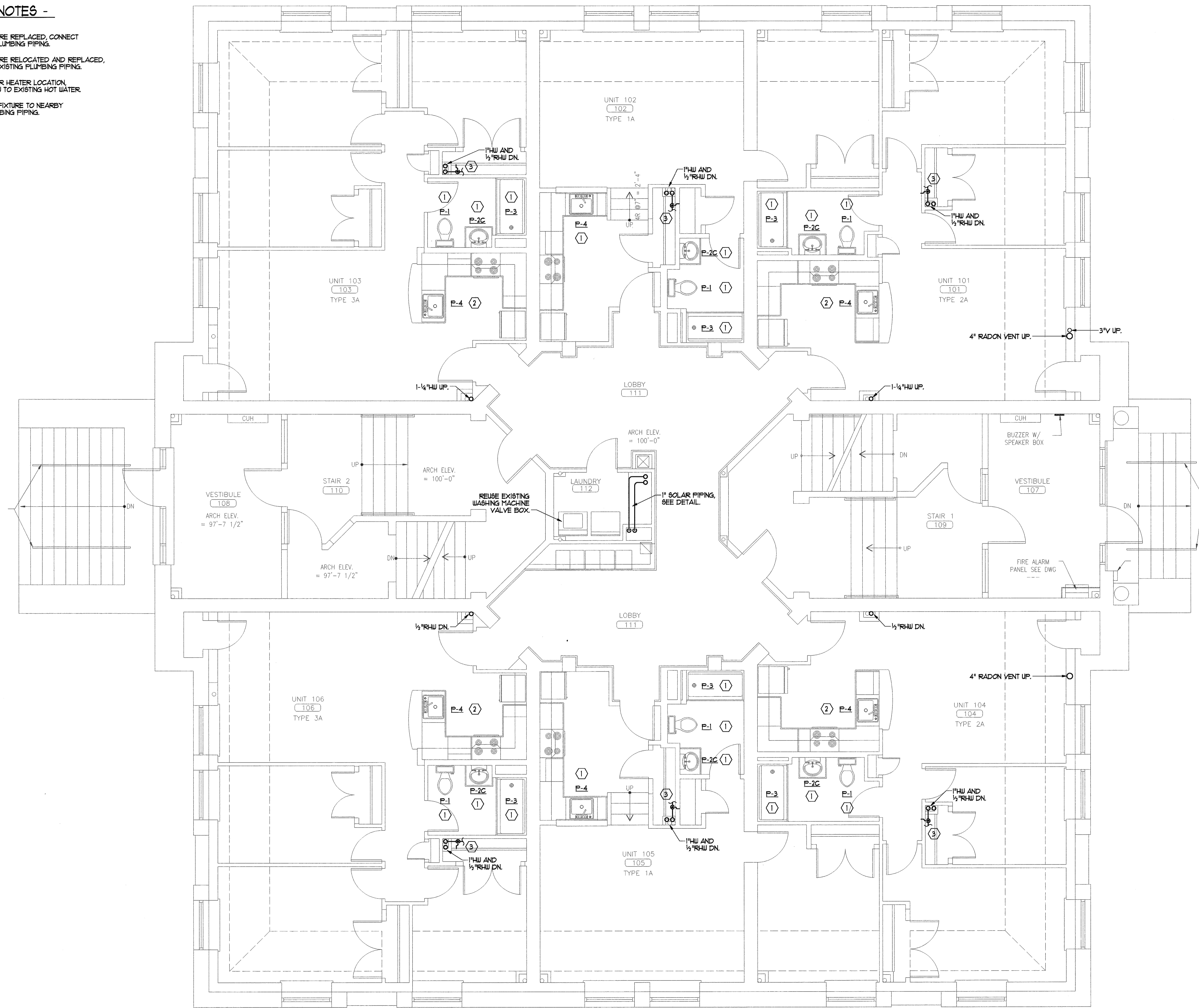


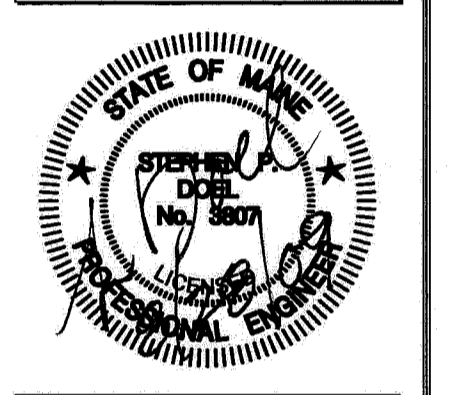
PLUMBING NOTES -

- ① EXISTING FIXTURE REPLACED, CONNECT TO EXISTING PLUMBING PIPING.
- ② EXISTING FIXTURE RELOCATED AND REPLACED, CONNECT TO EXISTING PLUMBING PIPING.
- ③ EXISTING WATER HEATER LOCATION, CONNECT 1/4"HW TO EXISTING HOT WATER.
- ④ CONNECT NEW FIXTURE TO NEARBY EXISTING PLUMBING PIPING.



CWS
CWS Architects
 Architecture
 Space Planning
 Value Design
 434 Cumberland Avenue
 Portland, ME 04101
 Phone: (207)774-4441
 Fax: (207)774-4016
 www.CWSarch.com

BENNETT ENGINEERING
 MECHANICAL • ELECTRICAL
 (207) 865-9475



Diner:
Avesta Munjoy Commons, LP.
 307 Cumberland Ave.
 Portland, Maine 04101
 TEL. 207-553-7780

Munjoy Commons Apartments
 Portland, Maine

Project No: 07429

Drawing Title:
EMERSON FIRST FLOOR PLUMBING PLAN

Scale: 1/4" = 1'-0"
 Date: August 28, 2009

- Revisions:
- △
 - △
 - △
 - △
 - △
 - △

Drawing Number:
EMERSON M2.2