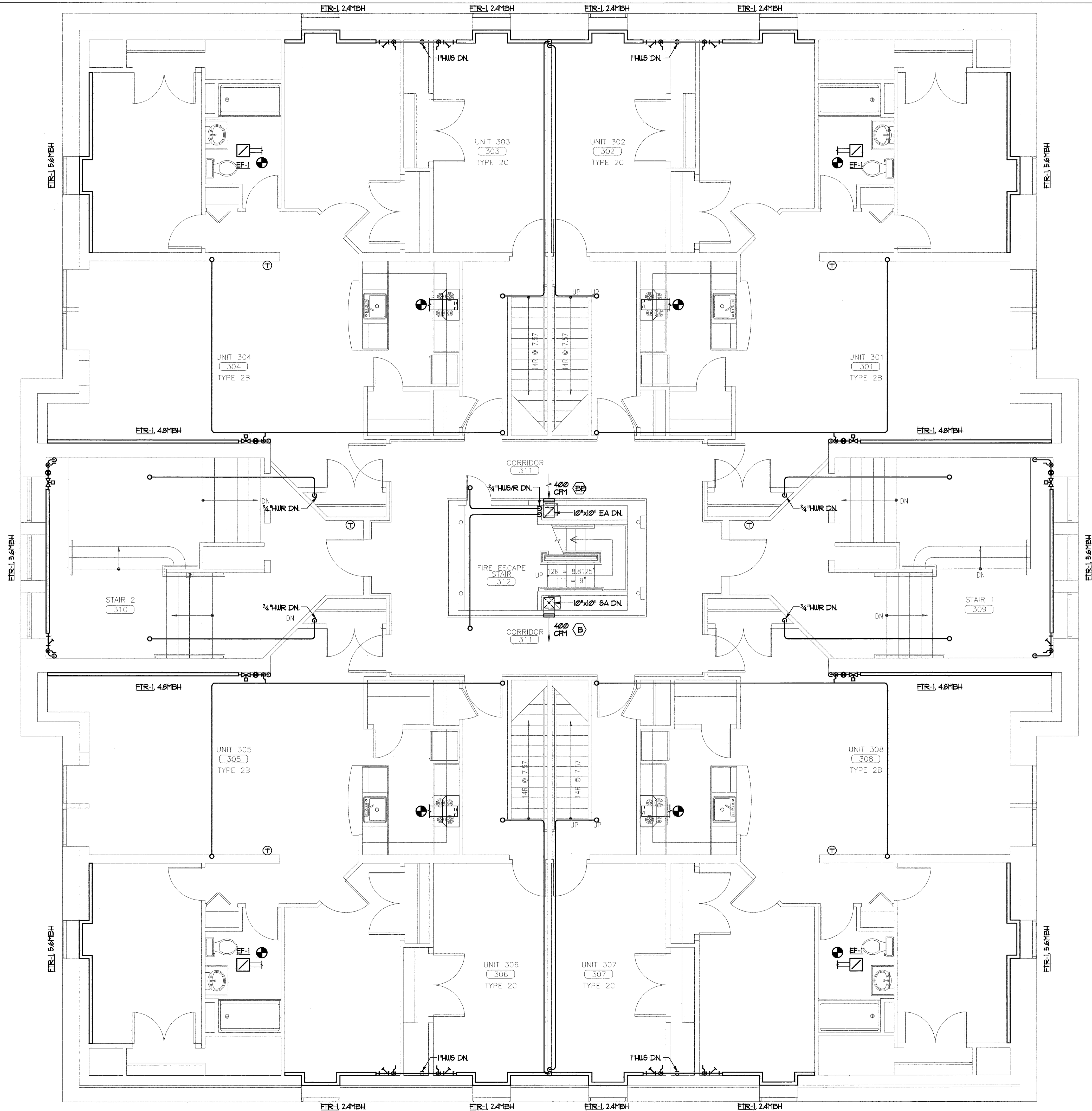


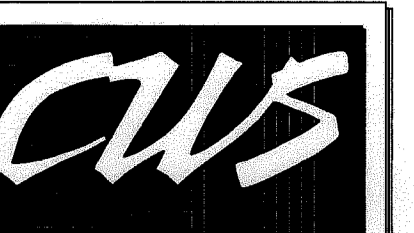
**MECHANICAL NOTES -**

1. HUB/R PIPING SHALL BE 3/4" UNLESS NOTED OTHERWISE.
2. RANGE HOOD BY OTHERS.
3. CONNECT RANGE HOODS AND BATH FANS TO EXISTING DUCTWORK AND BRICK VENT UNLESS NOTED OTHERWISE.
4. HUB/R VALVES SHALL BE LOCATED UNDER FTR COVER.



**1** THIRD FLOOR MECHANICAL PLAN  
REFERENCED FROM:

SCALE: 1/4" = 1'-0"



**CWS Architects**  
Architecture  
Space Planning  
Value Design

434 Cumberland Avenue  
Portland, ME 04101  
Phone: (207)774-4441  
Fax: (207)774-4016  
www.CWSarch.com



Diner:  
**Avesta Munjoy Commons, LP.**  
307 Cumberland Ave.  
Portland, Maine 04101  
TEL. 207-553-7780

**Munjoy Commons Apartments**  
Portland, Maine

Project No: 07429

Drawing Title:  
**EMERSON  
THIRD FLOOR  
MECHANICAL PLAN**

Scale: 1/4" = 1'-0"  
Date: August 28, 2009

- Revisions:
- △
  - △
  - △
  - △
  - △

Drawing Number:  
**EMERSON  
M1.4**