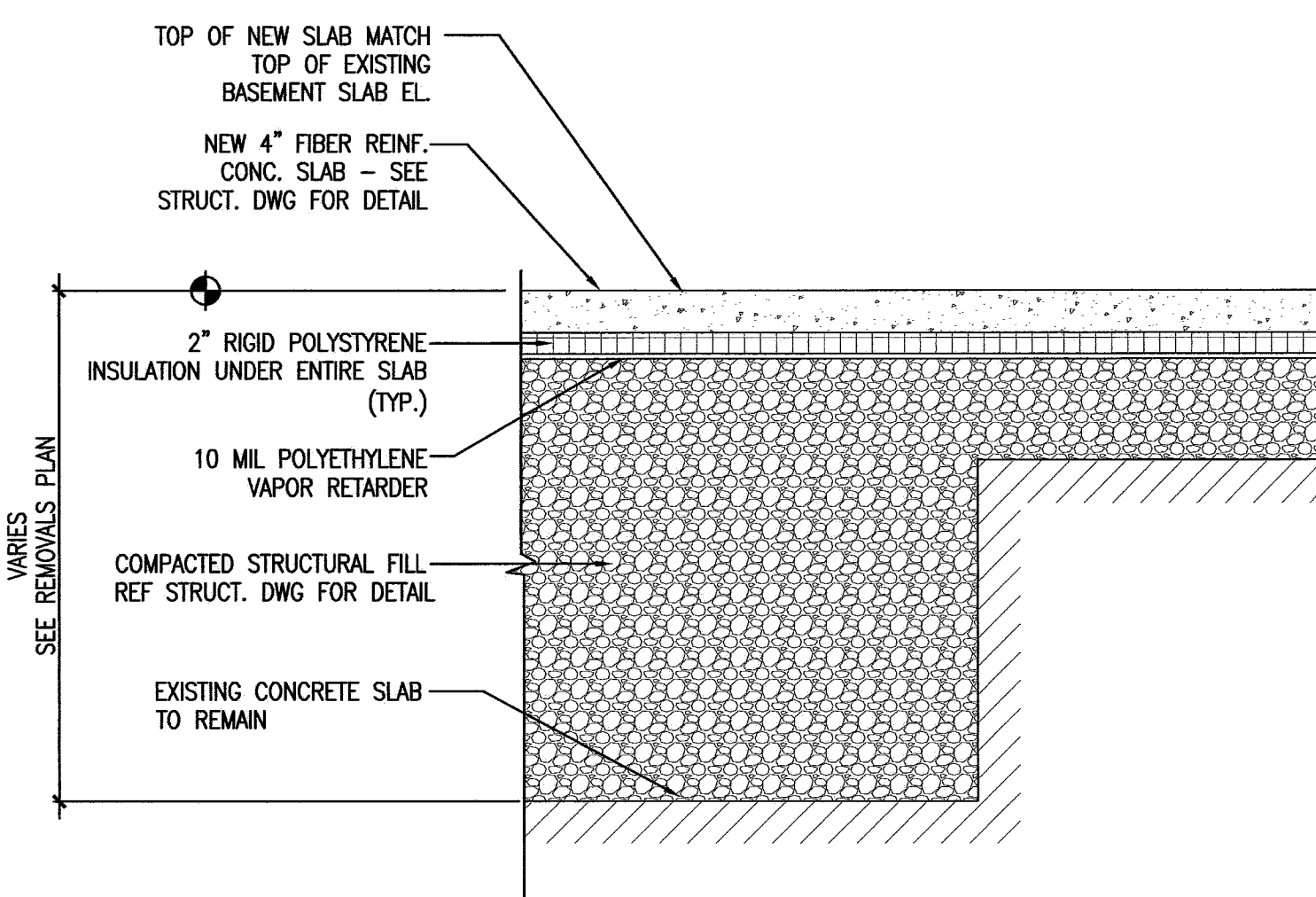
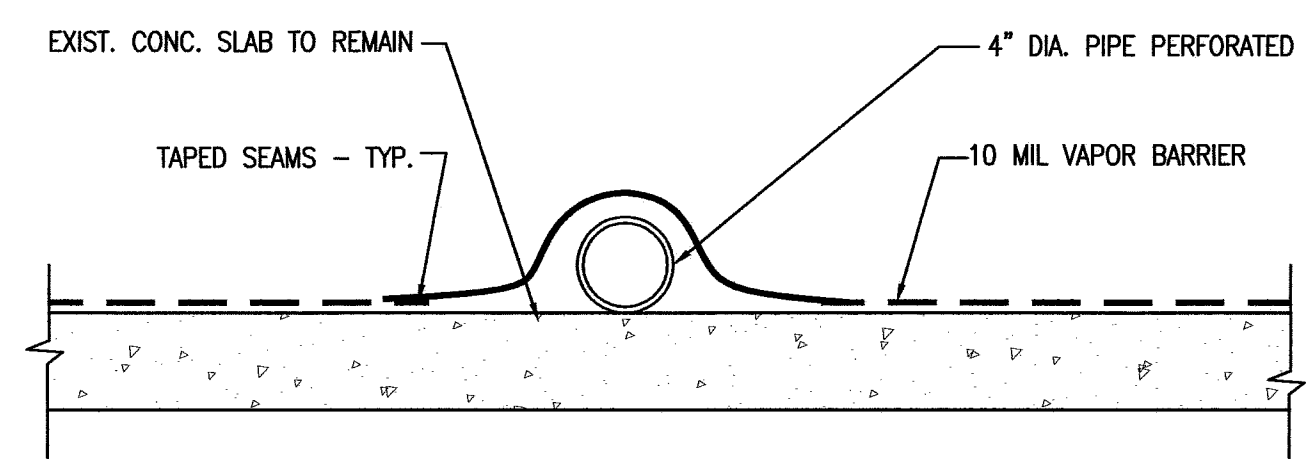


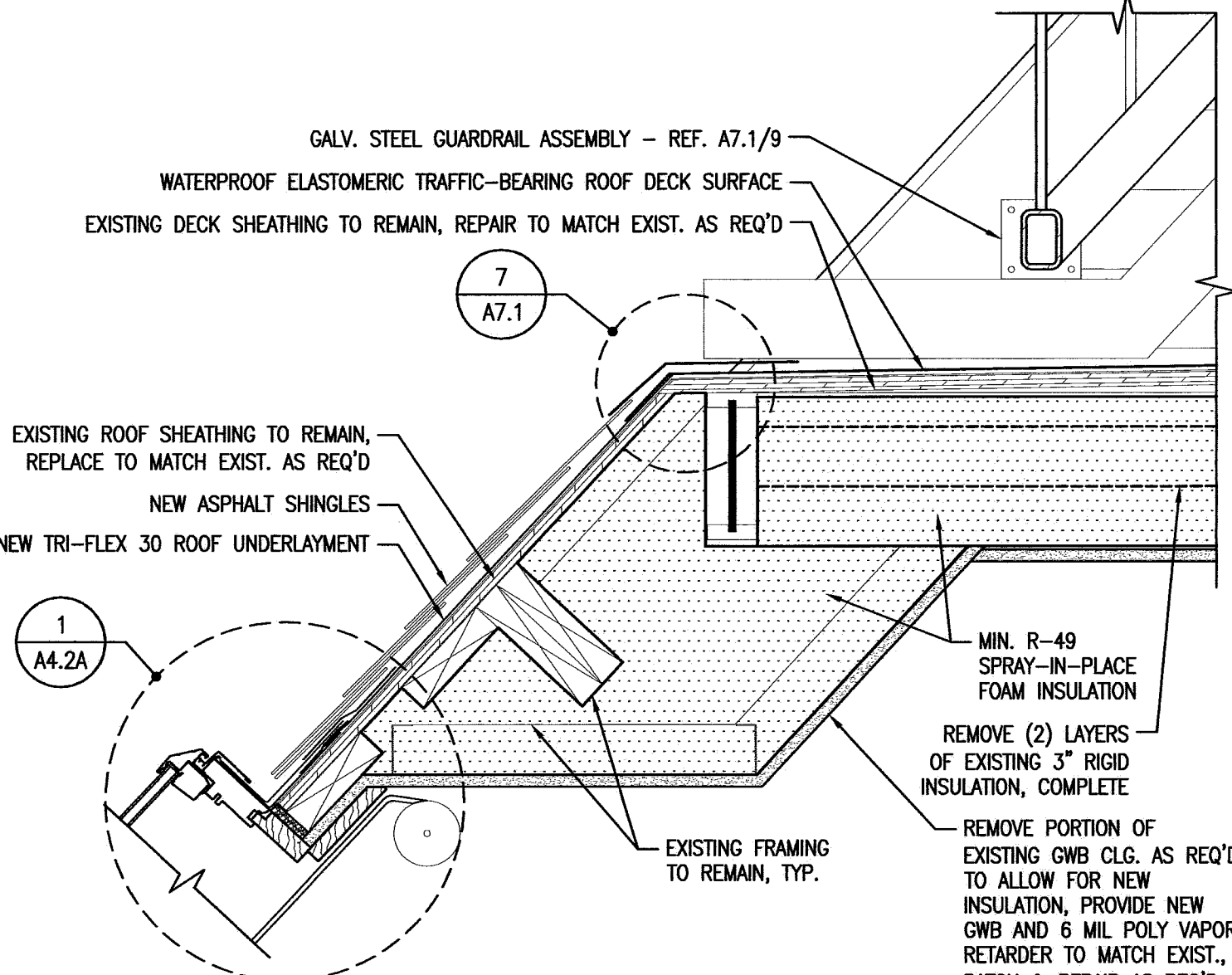
1 BASEMENT - INT. NON-BEARING WALL DETAIL
 REFERENCED FROM: SCALE: 1/2" = 1'-0"



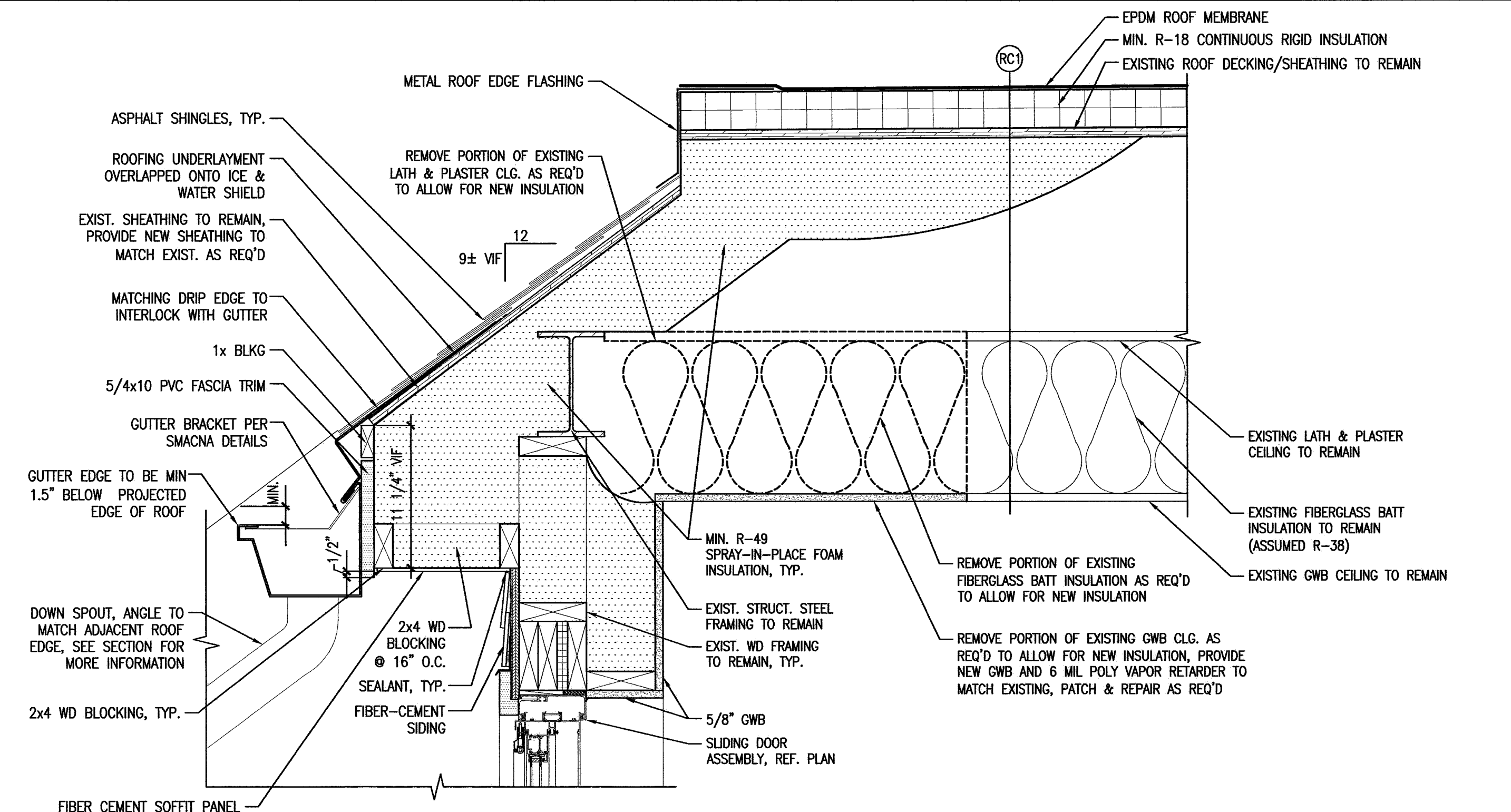
2 BASEMENT - INFILL CONCRETE FLOOR
 REFERENCED FROM: SCALE: 3/4" = 1'-0"



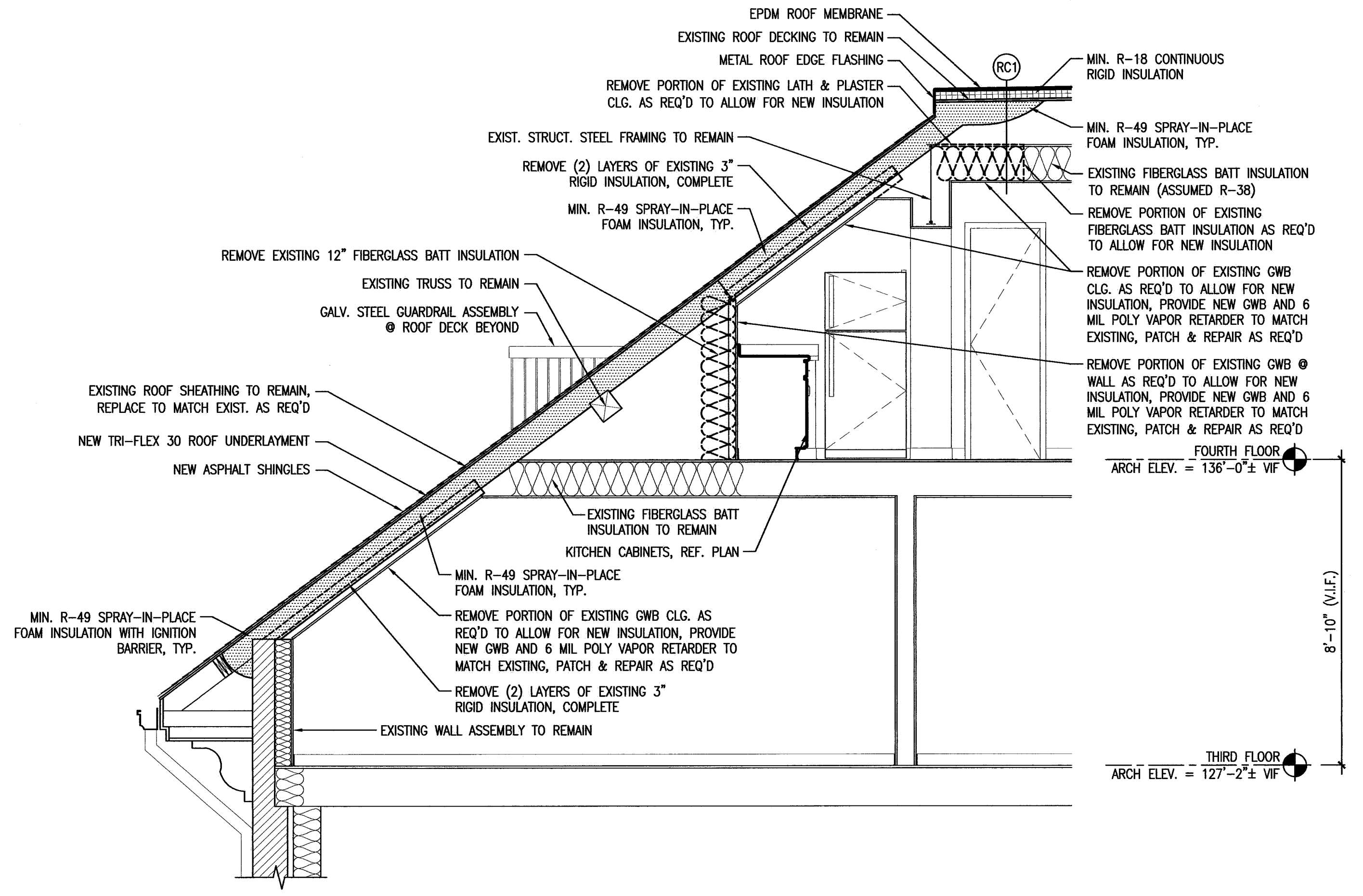
5 RADON VENT PIPE DTL. (ABOVE SLAB)
 REFERENCED FROM: SCALE: 1/2" = 1'-0"



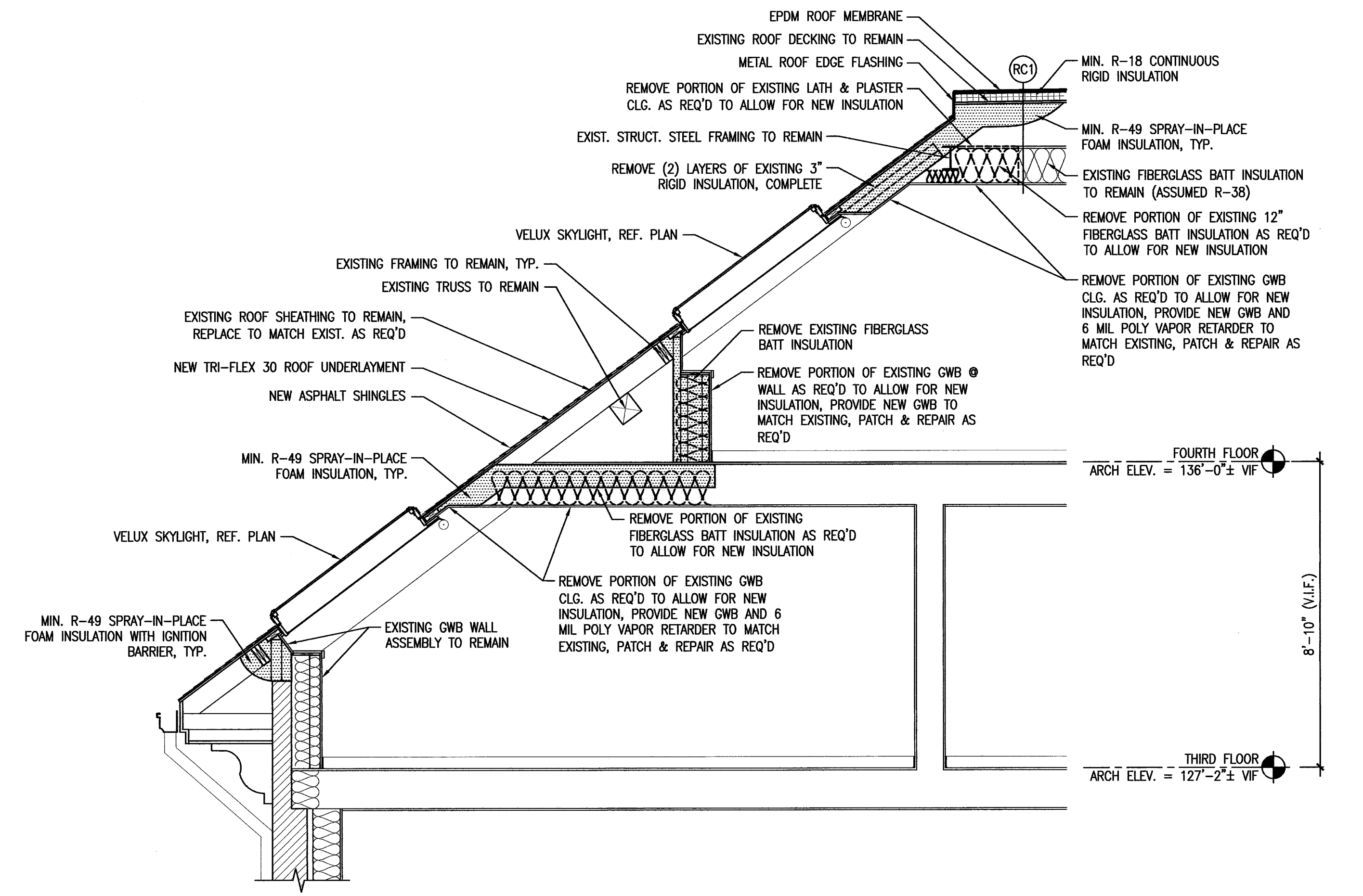
6 DETAIL @ ROOF/DECK ASSEMBLY
 REFERENCED FROM: SCALE: 1/2" = 1'-0"



9 DETAIL @ ROOF EDGE/SOFFIT
 REFERENCED FROM: SCALE: 1/2" = 1'-0"



7 PARTIAL WALL SECTION AT ROOF
 REFERENCED FROM: SCALE: 3/8" = 1'-0"



11 PARTIAL WALL SECTION AT ROOF
 REFERENCED FROM: SCALE: 3/8" = 1'-0"

CWS

CWS Architects

Architecture
 Space Planning
 Value Design

434 Cumberland Avenue
 Portland, ME 04101
 Phone: (207)774-4441
 Fax: (207)774-4016

www.CWSarch.com

REGISTERED ARCHITECT
 BENEDICT WALTER
 NO. 1947
 STATE OF MAINE

Owner:
Avesta Munjoy Commons, LP.
 307 Cumberland Ave.
 Portland, Maine 04101
 TEL. 207-553-7780

Client:

Munjoy Commons Apartments

Portland, Maine

Project No: 07429

Drawing Title:
EMERSON DETAILS

Scale: AS NOTED
 Date: August 28, 2009

Revisions:

Drawing Number:
EMERSON A7.2