

**EMERSON STREET RENOVATION**  
**NEW CONSTRUCTION**  
 23 EMERSON STREET | PORTLAND  
 BRYCE AVALLONE & PETER VALCOURT



**DEXTRIOUS  
 CREATIVE**

PORTLAND, ME 04102  
 TRACIE REED, ARCHITECT  
 NCARB, AIA, LEED AP BD+C  
 traciereed@dextrouscreative.com  
 207.409.0459 (cell)

**GENERAL CONTRACTOR/OWNER REP.**

PETER VALCOURT  
 PETER.VALCOURT@YAHOO.COM  
 207.469.8494

**STRUCTURAL ENGINEER**  
 AL HODSON  
 RESURGENCE ENGINEERING  
 61 INDIA STREET, SUITE 7  
 PORTLAND, ME 04101  
 AL@RESURGENCEENGINEERING.COM  
 207.615.9985 (CELL)

**CARPENTERS**  
 CARL LITTLEFIELD  
 LITTLEFIELD & SON CONSTRUCTION  
 79 TOWN FARM RD  
 BUXTON, ME 04093  
 CARL.LITTLEFIELD@YAHOO.COM  
 207.929.6040

No.	Description	Date
1	Revision 1	Date 1

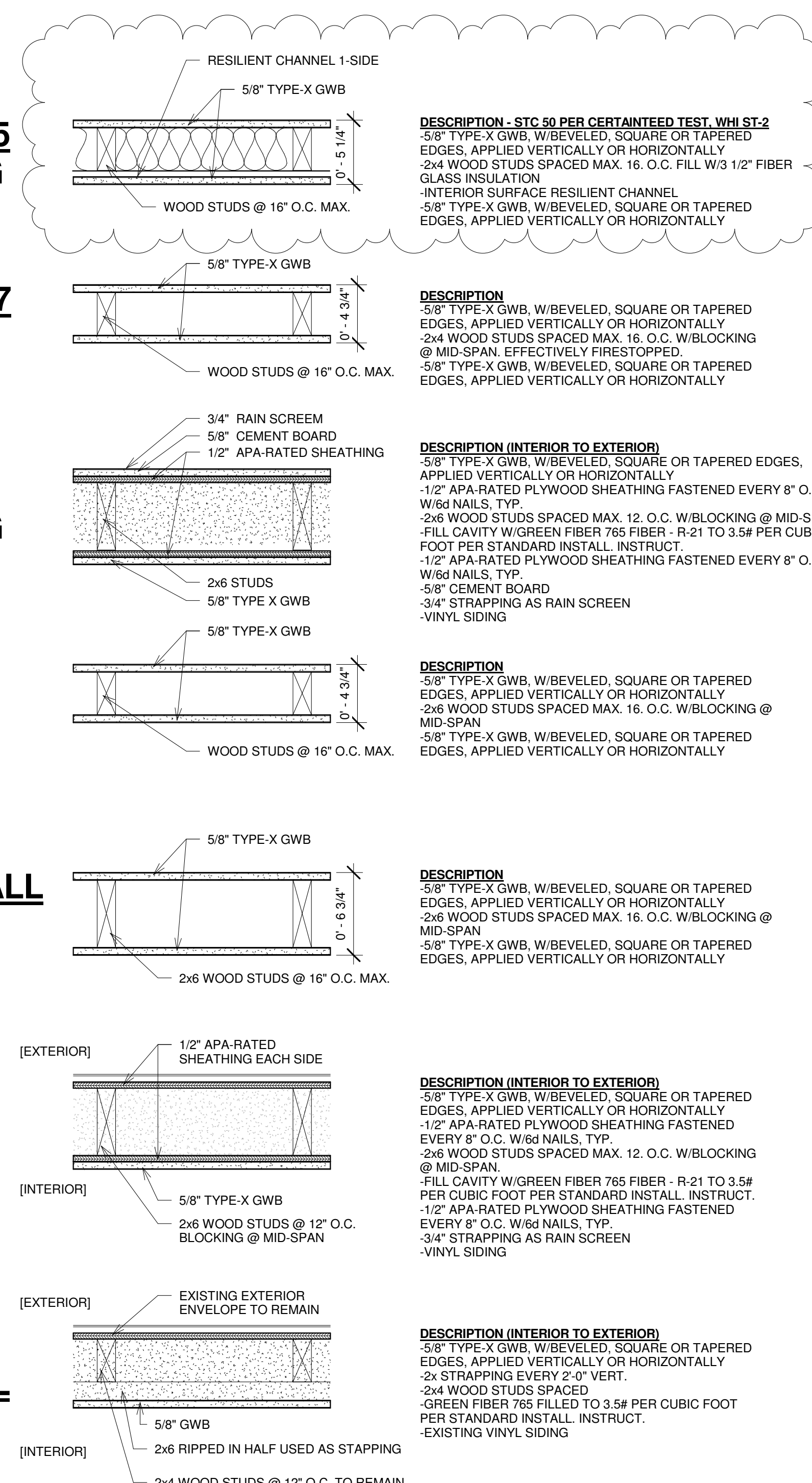
**Schedules and  
 Wall Details**

Project number 15-16  
 Date 06.23.15  
 Drawn by TJR  
 Checked by TJR

**A-5.1**

Scale As indicated

DOOR SCHEDULE				
#	TYPE	Width	Height	COMMENTS
001	A	3'-0"	6'-8"	
001B	A	3'-0"	6'-8"	
101	A	3'-0"	6'-8"	EXISTING TO REMAIN?
102	B	2'-10"	6'-8"	60 MIN. RATING W/CLOSURE
102B	B	2'-10"	6'-8"	60 MIN. RATING W/CLOSURE
104	D	3'-0"	6'-8"	
105	C	2'-8"	6'-8"	
105B	C	2'-6"	6'-8"	
107	C	2'-8"	6'-8"	
107B	F	4'-0"	6'-8"	
107C	F	4'-0"	6'-8"	
108	C	2'-6"	6'-8"	
108B	F	5'-0"	6'-8"	
108C	F	5'-0"	6'-8"	
108D	C	2'-8"	6'-8"	
109	C	2'-6"	6'-8"	
110	E	3'-0"	6'-8"	
110B	H	6'-0"	7'-0"	
201	B	2'-8"	6'-8"	60 MIN. RATING W/CLOSURE
204	B	2'-8"	6'-8"	60 MIN. RATING W/CLOSURE
204B	D	3'-0"	6'-8"	
205	C	2'-8"	6'-8"	
205B	C	2'-6"	6'-8"	
207	C	2'-8"	6'-8"	
207B	F	4'-0"	6'-8"	
207C	F	4'-0"	6'-8"	
208	C	2'-6"	6'-8"	
208B	F	5'-0"	6'-8"	
208C	F	5'-0"	6'-8"	
208D	C	2'-8"	6'-8"	
209	C	2'-6"	6'-8"	
210	E	3'-0"	6'-8"	
210B	H	6'-0"	7'-0"	
301	B	2'-8"	6'-8"	60 MIN. RATING W/CLOSURE
304	B	2'-8"	6'-8"	60 MIN. RATING W/CLOSURE
304B	D	3'-0"	6'-8"	
305	C	2'-8"	6'-8"	
305B	C	2'-6"	6'-8"	
306	C	2'-8"	6'-8"	
307	C	2'-8"	6'-8"	
307B	F	4'-0"	6'-8"	
307C	F	4'-0"	6'-8"	
308	C	2'-8"	6'-8"	
308B	F	5'-0"	6'-8"	
308C	F	5'-0"	6'-8"	
308D	C	2'-8"	6'-8"	
309	C	2'-8"	6'-8"	
310	E	3'-0"	6'-8"	
310B	H	6'-0"	7'-0"	



**TYPE 1A | UL 305  
 1-HOUR RATING**

**TYPE 1B | UL 407  
 30-MIN RATING**

**TYPE 1S  
 1-HOUR RATING**

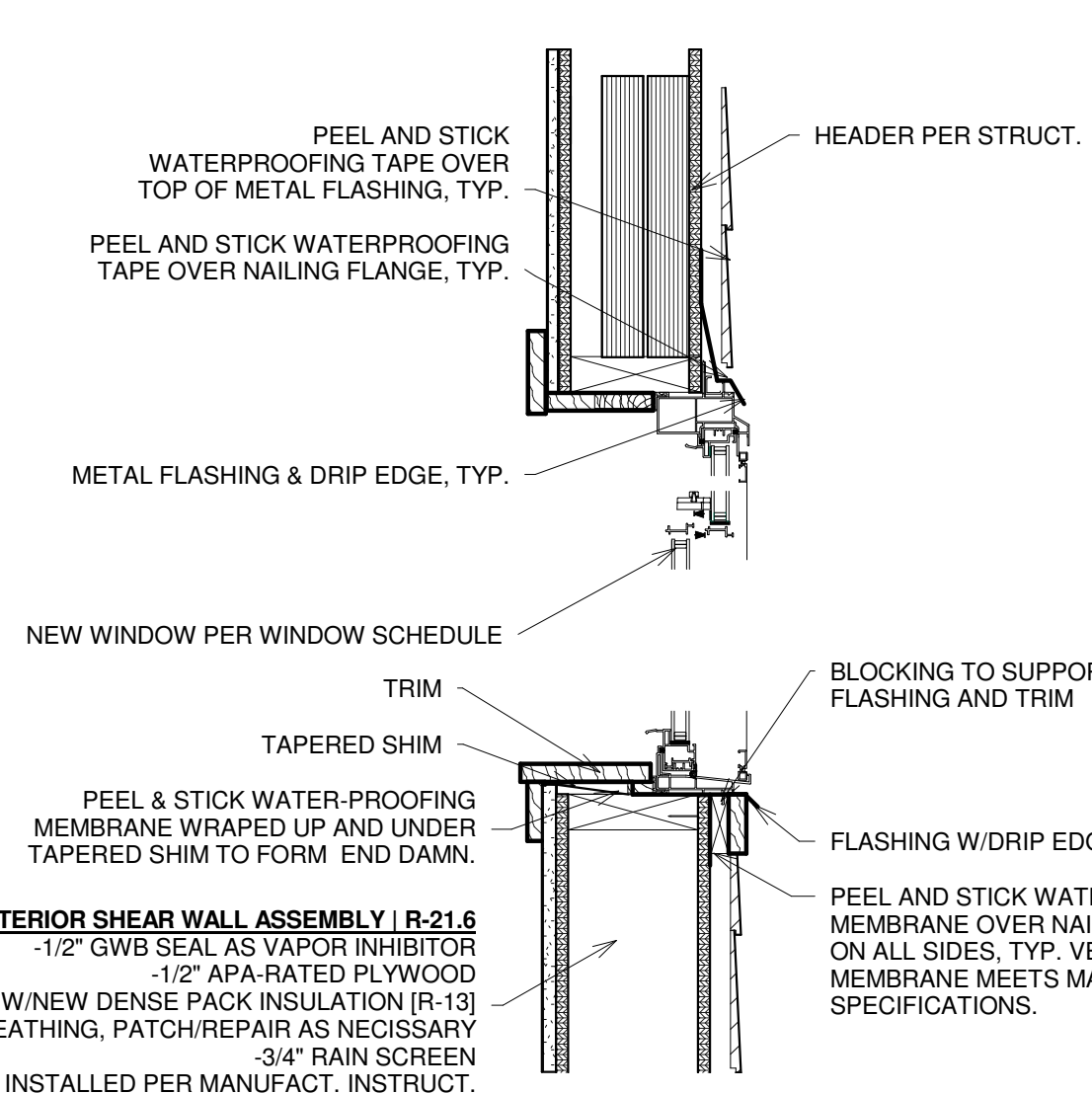
**TYPICAL INT.  
 NO RATING**

**B | BEARING WALL  
 NO RATING**

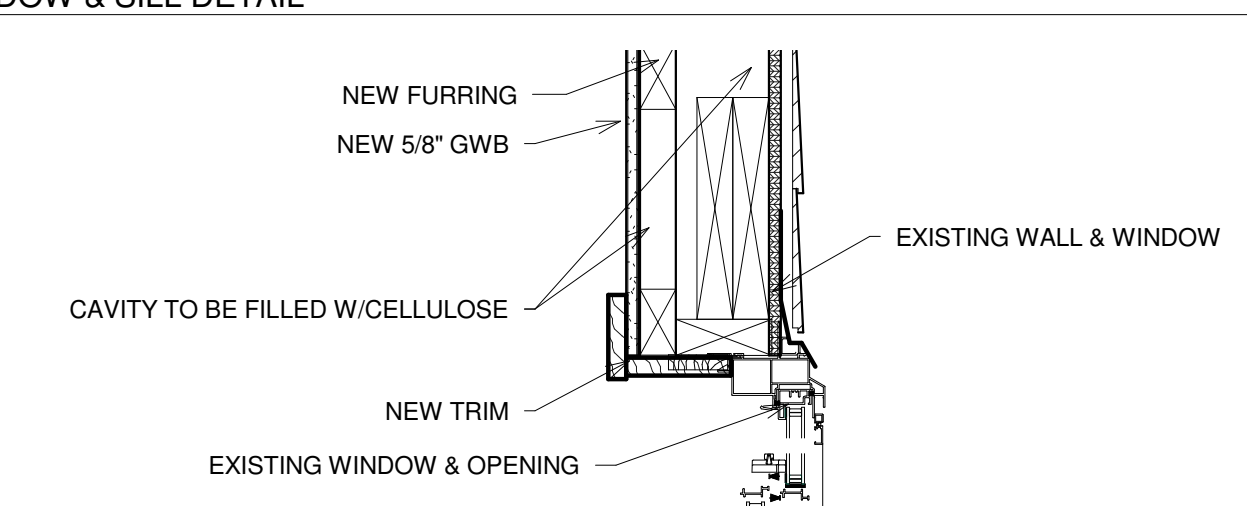
**S | EXTERIOR  
 SHEAR WALL  
 R-21**

**E | EXISTING  
 EXTERIOR WALL  
 R-21**

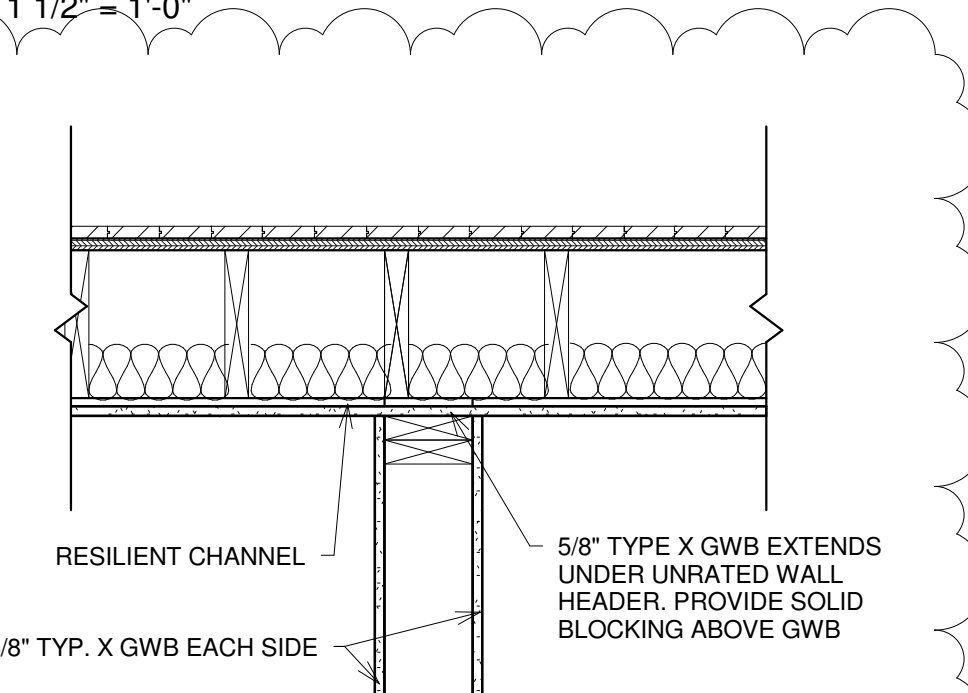
Wall Types  
 1 1/2" = 1'-0"



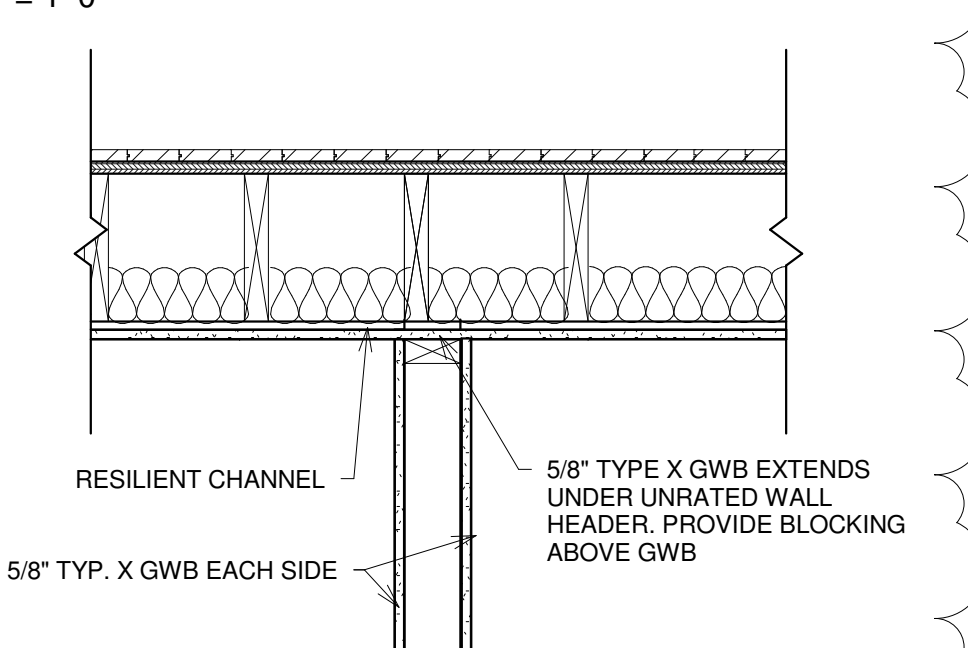
1 TYP. NC WINDOW & SILL DETAIL  
 1 1/2" = 1'-0"



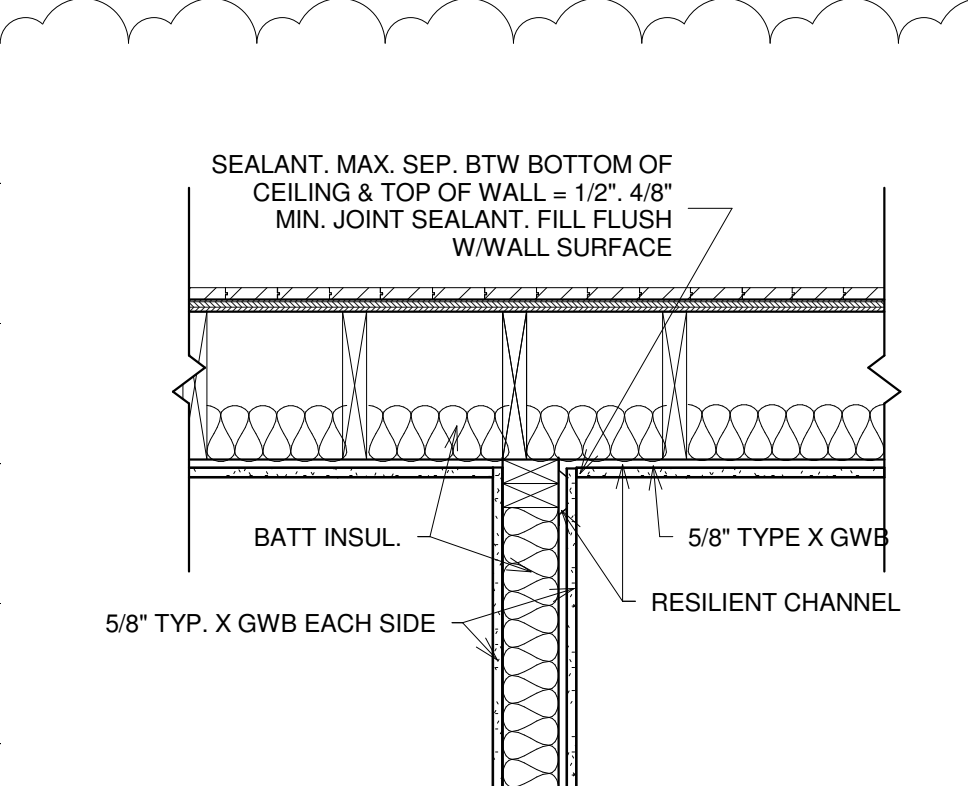
2 TYPICAL EXISTING WALL @ WINDOW  
 1 1/2" = 1'-0"



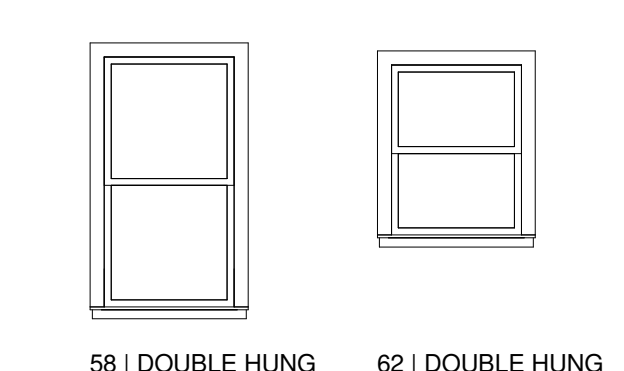
3 TYP. HEAD DETAIL @ NON-RATED  
 BEARING WALL (TYPE B)  
 1" = 1'-0"



4 TYP. HEAD OF WALL NON-RATED WALL  
 1" = 1'-0"



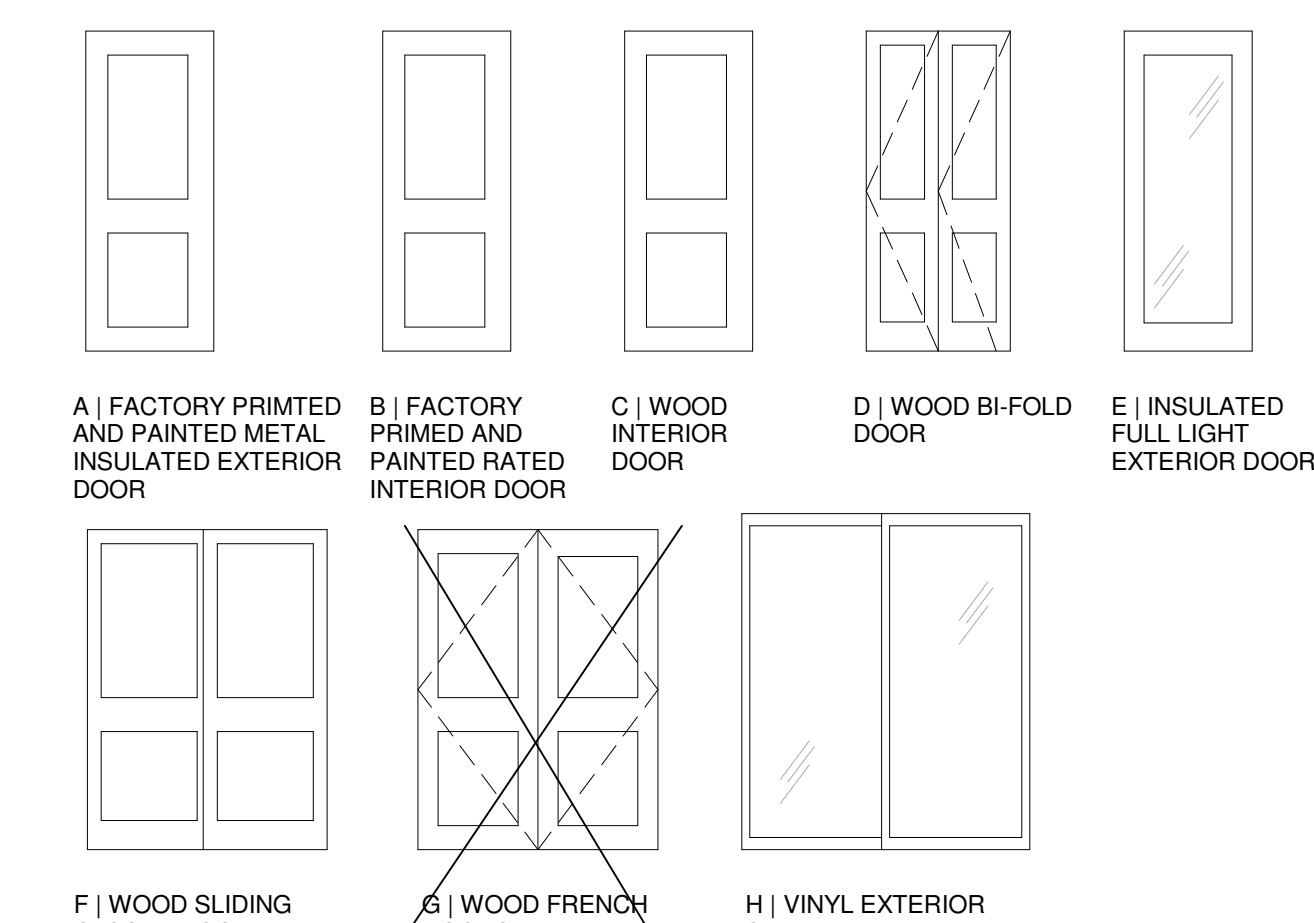
5 TYP. HEAD OF WALL DETAIL  
 1" = 1'-0"



Window Legend  
 1/4" = 1'-0"

Window Schedule				
Type Mark	Rough Opening Width	Rough Opening Height	Type	Comments
58	2' - 10"	5' - 4"	Double Hung with Trim	
62	2' - 10"	3' - 8"	Double Hung with Trim	

ENSURE ALL WINDOWS MEET IBC-2009 REQUIREMENTS IN SECTION 2406, SAFETY GLAZING. REPLACE ANY EXISTING WINDOWS REQUIRING SAFETY GLAZING PER SECTION 2406 TO MEET CODE. NEW WINDOWS TO MEET IBC-2009 U-FACTORS AND SHGC RATINGS. NOTE THAT GLAZING IN SHOWER-AREAS MUST MEET SAFETY GLAZING STANDARD.



DOOR PANEL TYPES  
 1/4" = 1'-0"