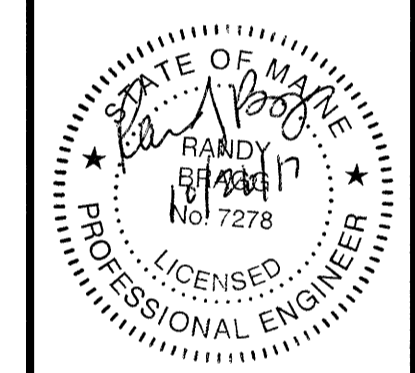


CARPENTER ASSOCIATES
CONSULTING ENGINEERS
687 STILLWATER AVENUE - OLD TOWN - MAINE 04468

NO.	DATE	BY	DESCRIPTION

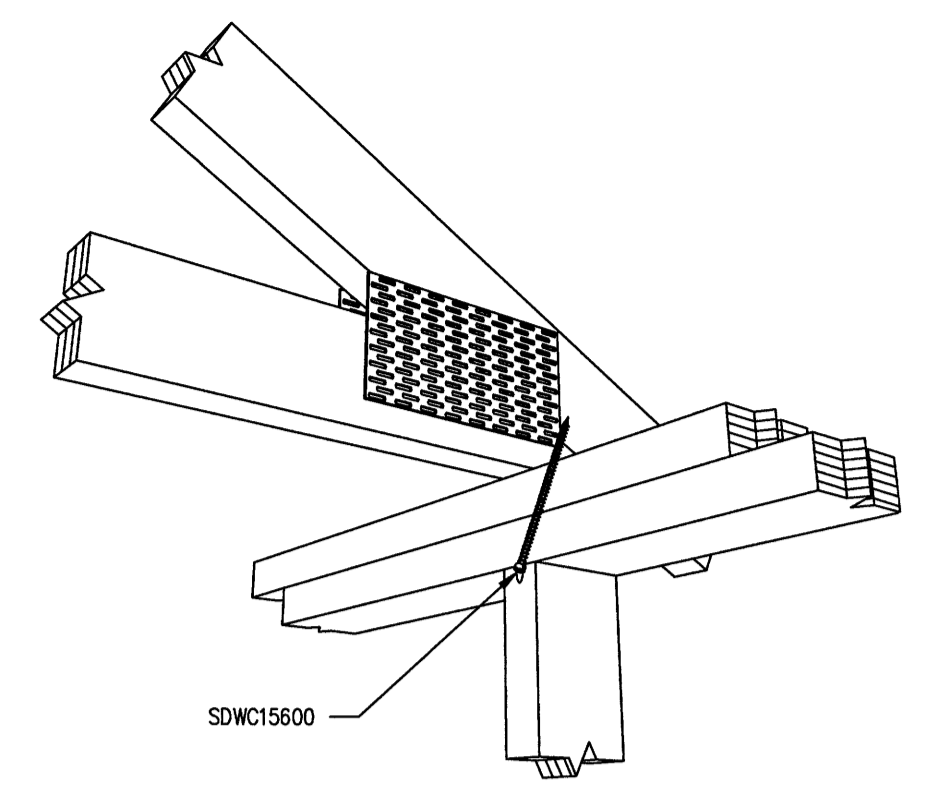


PETER DOWLING
DOWLING HOUSE THIRD FLOOR RENOVATION
59 CONGRESS STREET - PORTLAND, MAINE
STRUCTURAL DETAILS

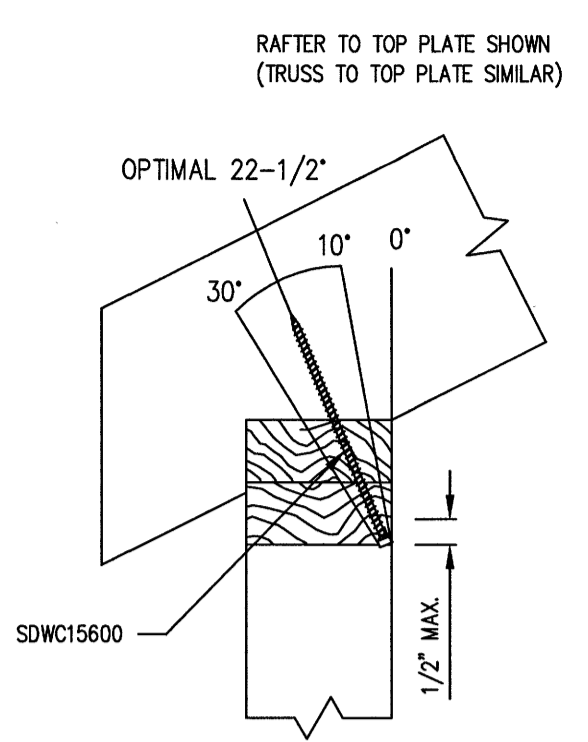
Drawn: JE
Checked: RB
Scale: AS NOTED
Date: 09-29-2017
Project No: 17078
Sheet Number:

4

FOR REVIEW
10-26-2017

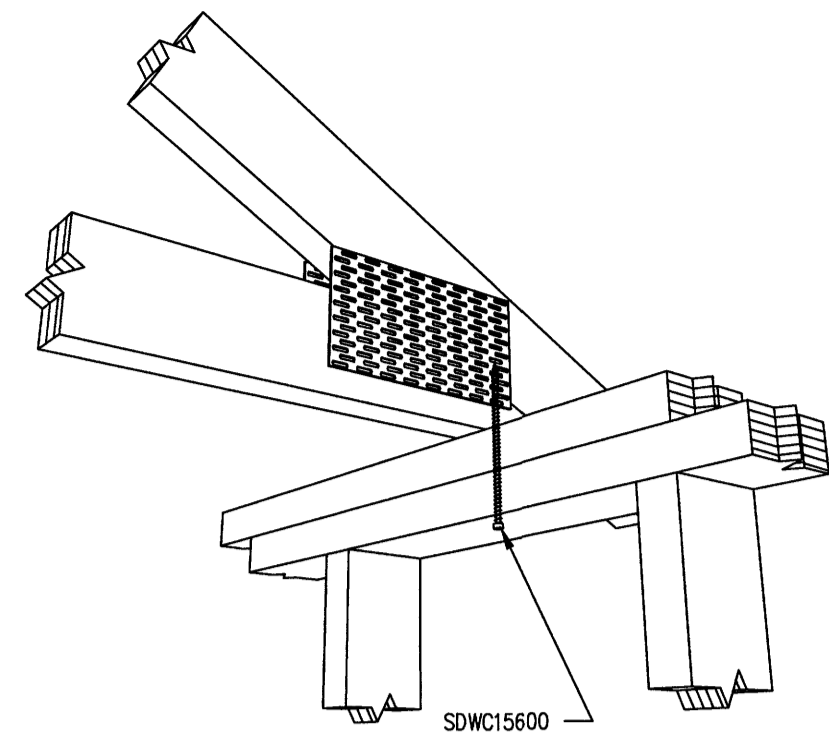


ROOF TO WALL INSTALLATION DETAIL
NOT TO SCALE



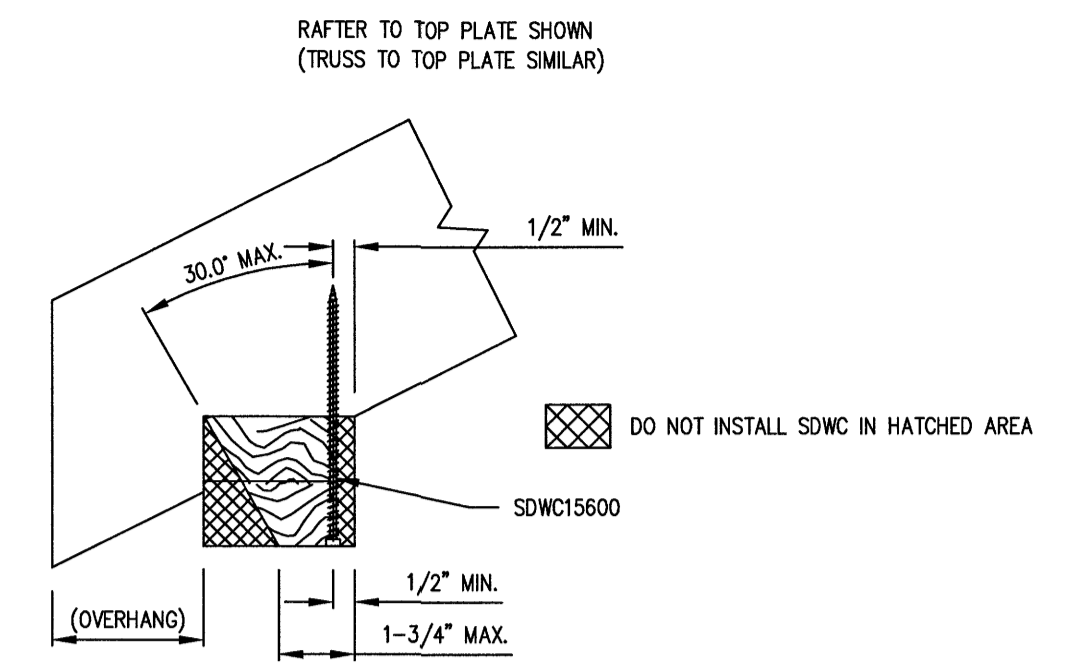
ROOF TO WALL INSTALLATION RANGE DETAIL
NOT TO SCALE

NOTE:
1. SLOPED-ROOF RAFTERS MAY BE SLOPED UP TO AND INCLUDING A 12:12 PITCH AND MUST BE "BIRDSMOUTH" CUT.



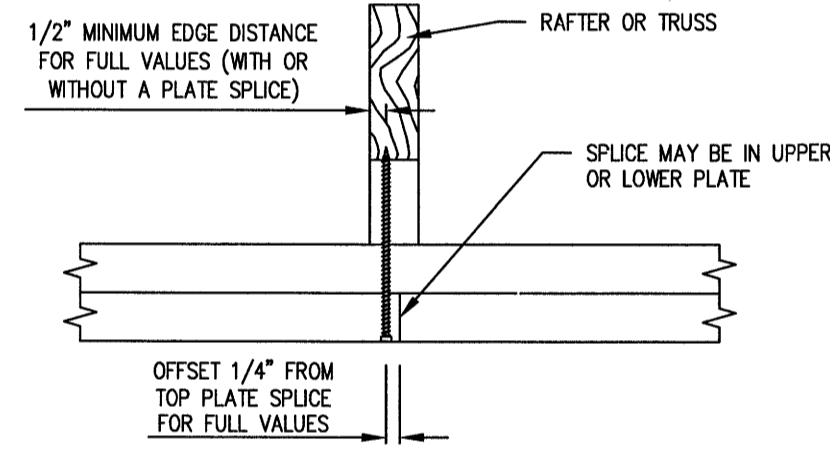
INSTALLATION - TRUSS/RAFTER OFFSET FROM STUD DETAIL
NOT TO SCALE

NOTE:
1. REFER TO SDWC ROOF TO WALL INSTALLATION RANGE DETAILS FOR INSTALLATION ANGLE LIMIT.

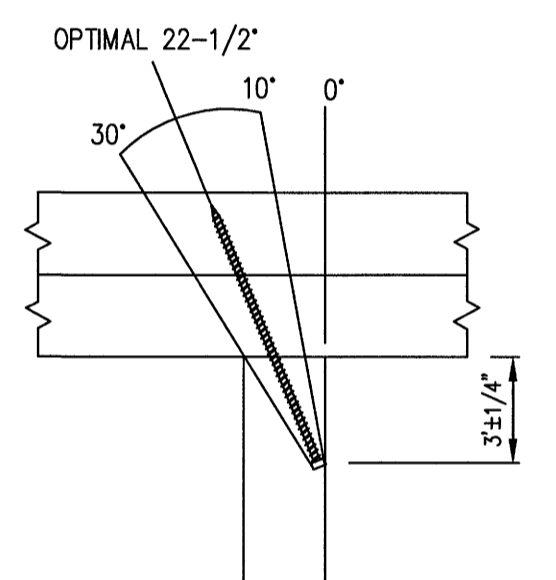


INSTALLATION RANGE DETAIL
NOT TO SCALE

NOTE:
1. SLOPED-ROOF RAFTERS MAY BE SLOPED UP TO AND INCLUDING A 12:12 PITCH AND MUST BE "BIRDSMOUTH" CUT.

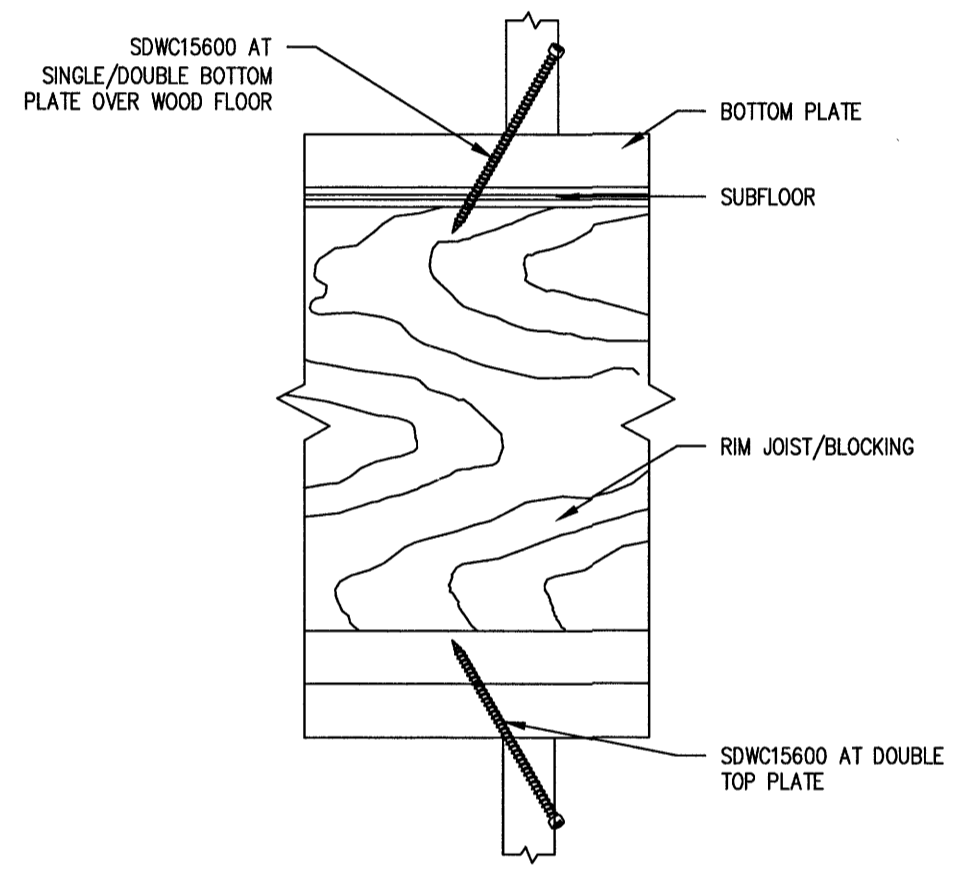


MIN. EDGE DISTANCE FOR TOP PLATE SPLICE DETAIL
NOT TO SCALE



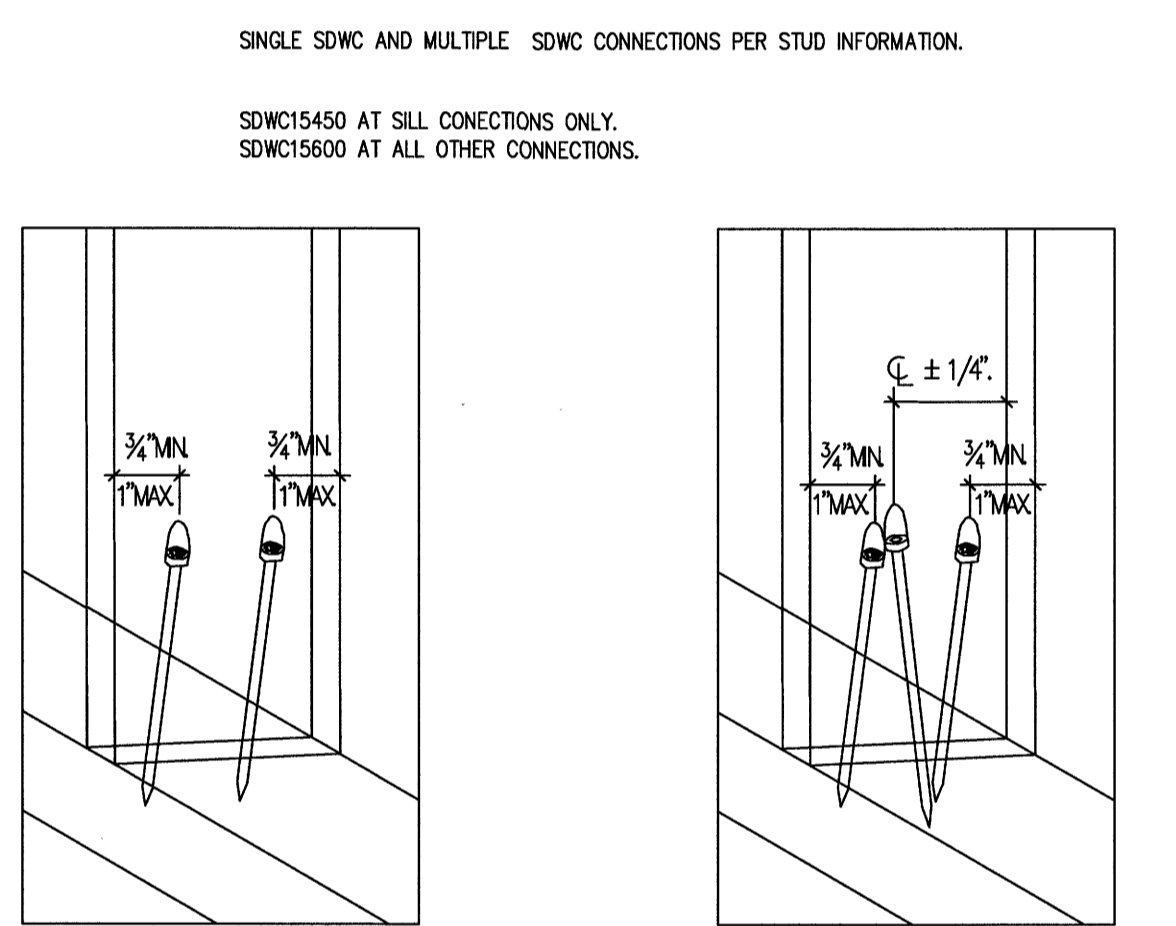
STUD-TO-TOP/BOTTOM PLATES CONNECTION DETAIL
NOT TO SCALE

NOTE:
1. STUD-TO-DOUBLE TOP PLATES SHOWN. STUD-TO-SINGLE/DOUBLE BOTTOM PLATES OVER WOOD FLOOR SIMILAR.



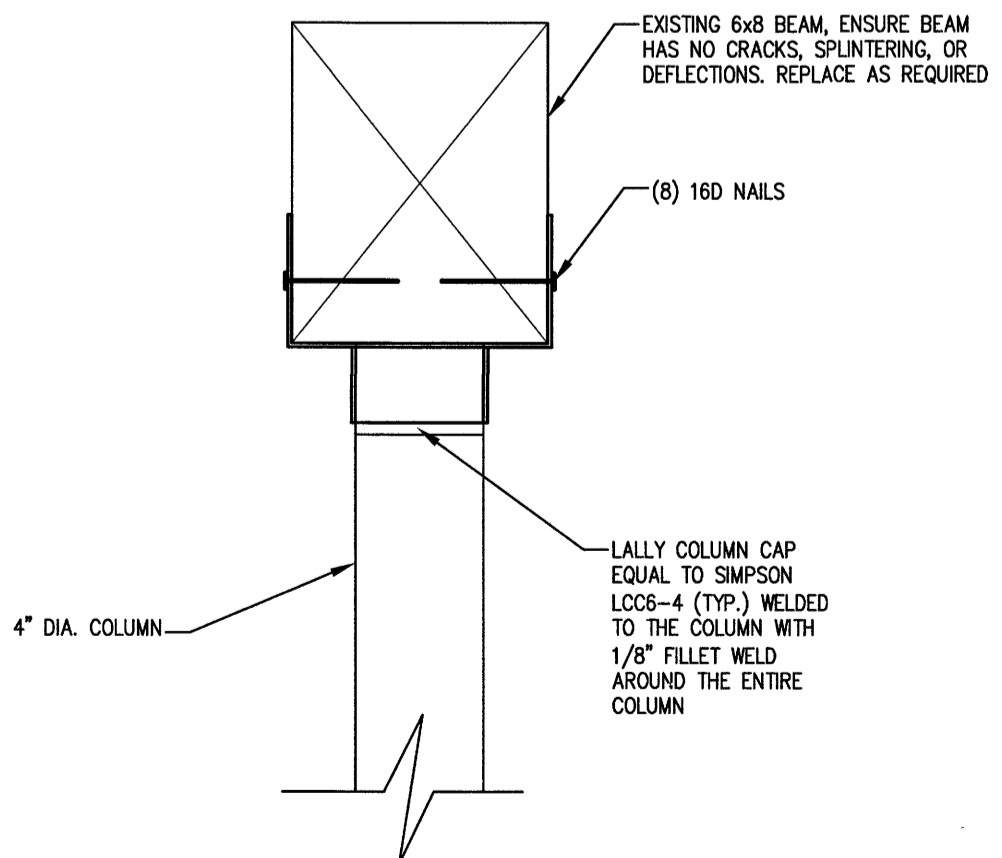
STUD-TO-BOTTOM PLATE CONNECTION OVER WOOD FLOOR DETAIL
NOT TO SCALE

NOTE:
1. REFER TO SDWC STUD-TO-TOP/BOTTOM PLATES CONNECTION DETAIL FOR INSTALLATION ANGLE LIMIT.

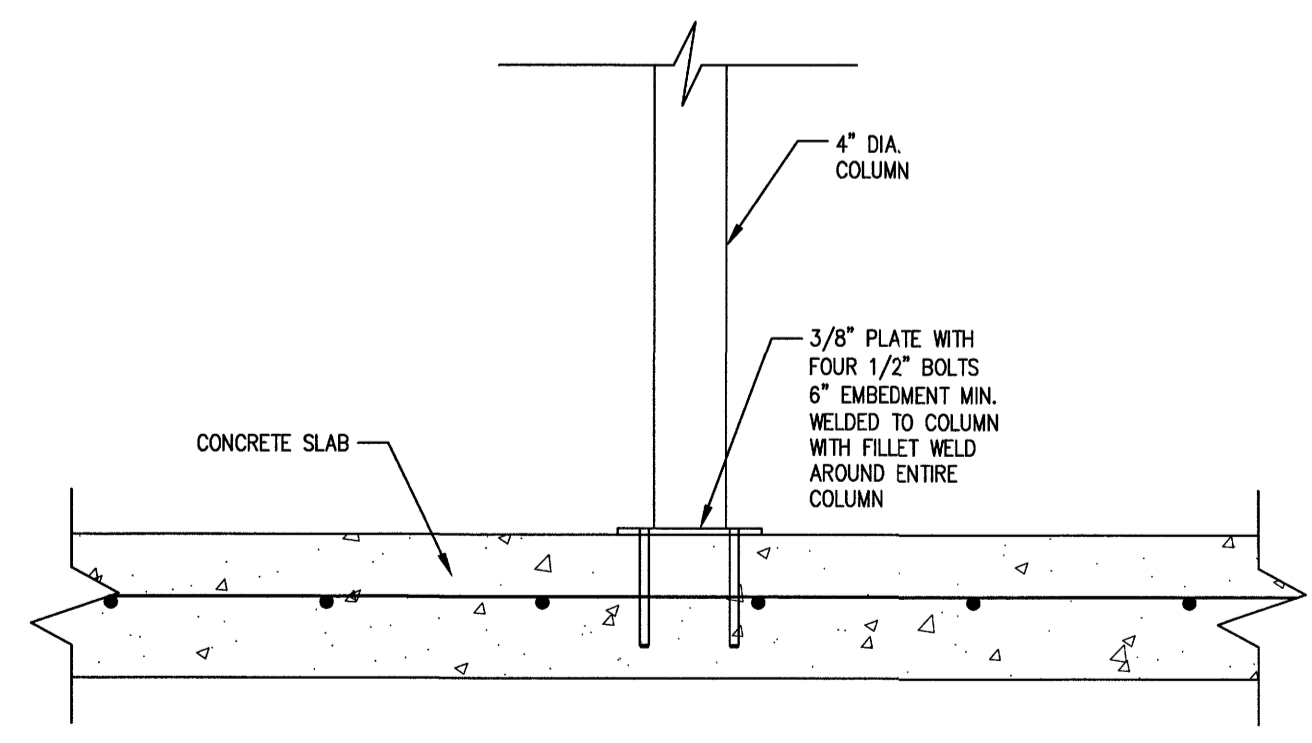


EDGE DISTANCE AND SPACING INFORMATION DETAIL
NOT TO SCALE

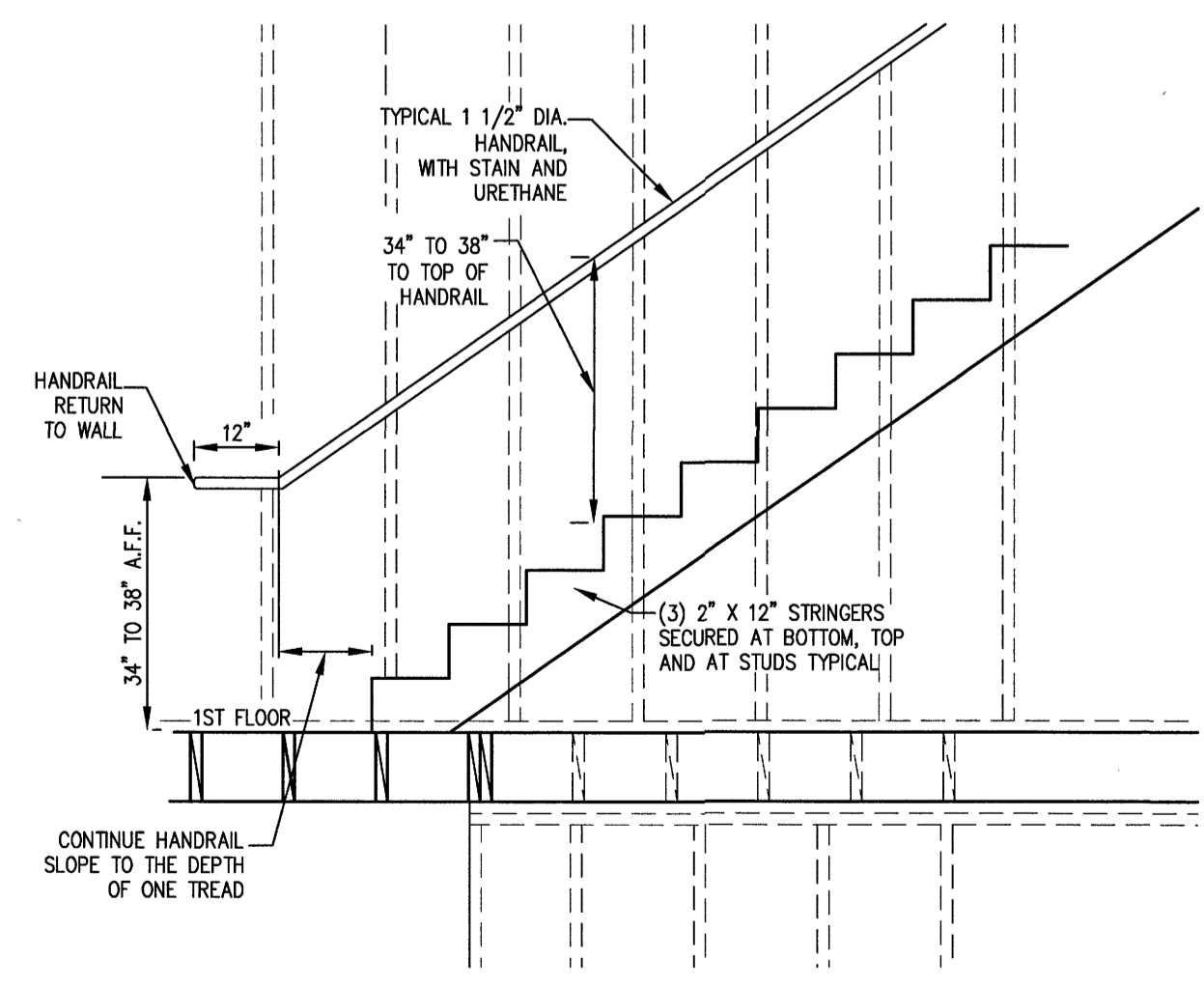
NOTE:
1. STUD-TO-BOTTOM PLATE SHOWN. ALL OTHER INSTALLATIONS SIMILAR.



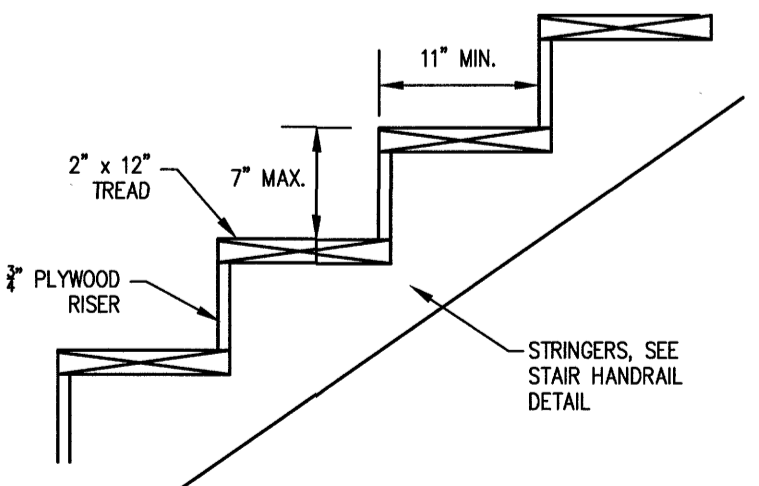
COLUMN TO BEAM CONNECTION DETAIL
NOT TO SCALE



COLUMN TO FOUNDATION CONNECTION DETAIL
NOT TO SCALE



STAIR HANDRAIL DETAIL
NOT TO SCALE



STAIR RISER/TREAD DETAIL
NOT TO SCALE

NOTE:
1. STAIR FINISH MAY ALTER FRAMING. CONTRACTOR SHALL ADJUST ACCORDINGLY.
2. CONTRACTOR SHALL ENSURE FINISH STAIRS ADHERE TO APPLICABLE CODES.