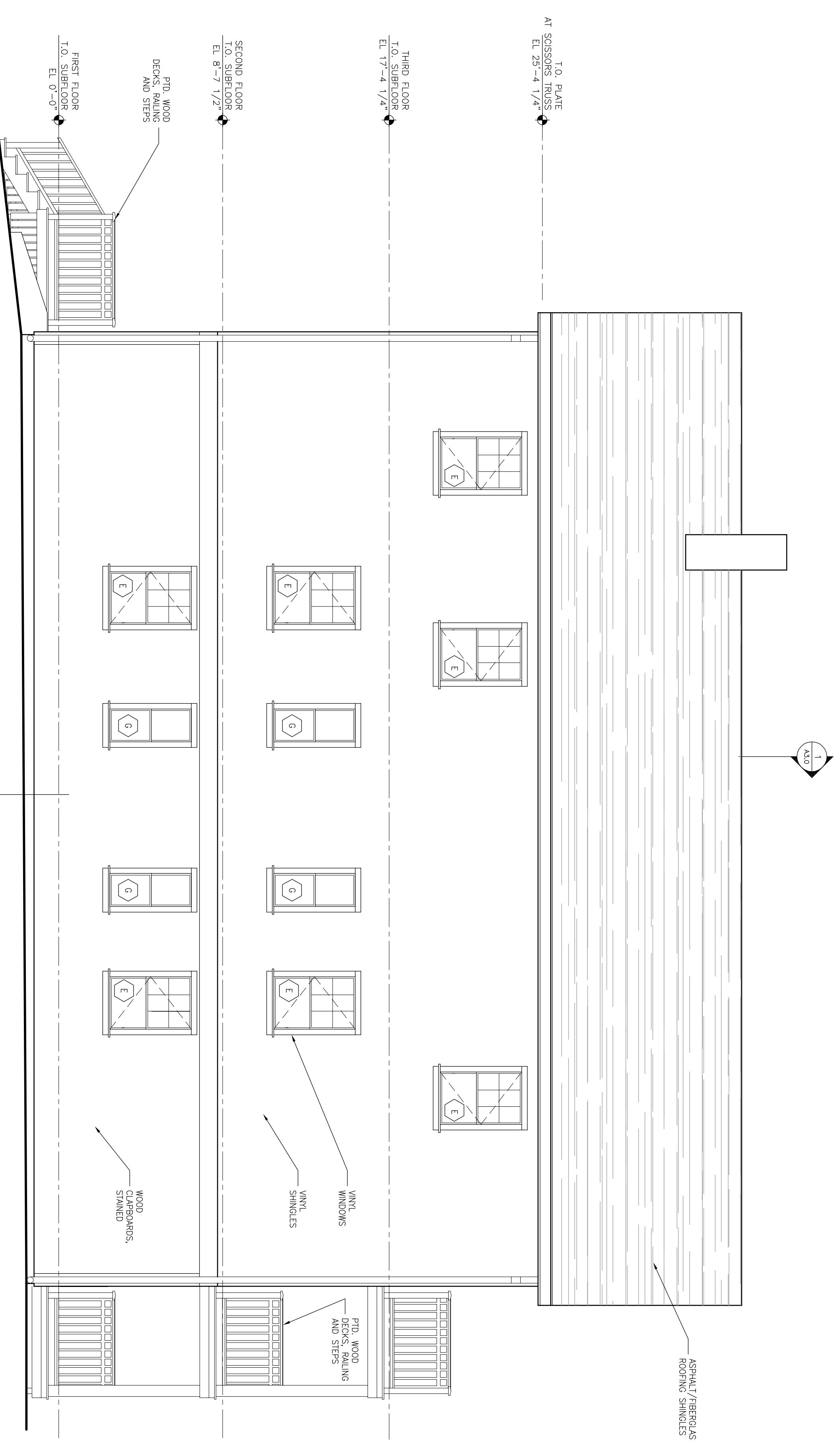


2 LEFT ELEVATION
1/4"=1'-0"



1 BACK ELEVATION
1/4"=1'-0"

TOOTHAKER (TURNER ST.)
PORTLAND, ME

Title:

11 TURNER
BUILDING
ELEVATIONS

Project No: 200508

Date: 3 JANUARY 2006

Revisions:

Issued For: CONSTRUCTION

Drawing No:

A2.3