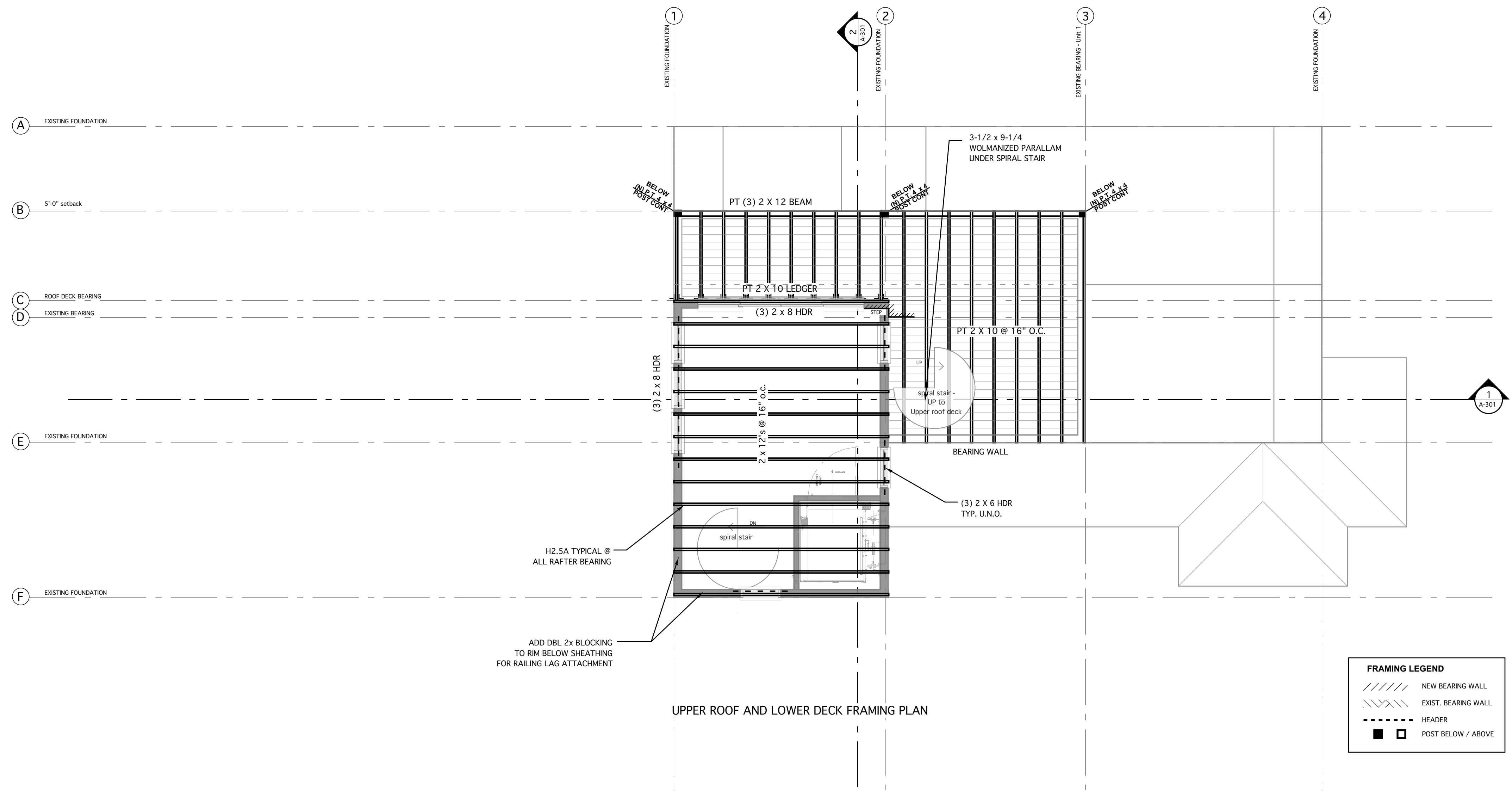
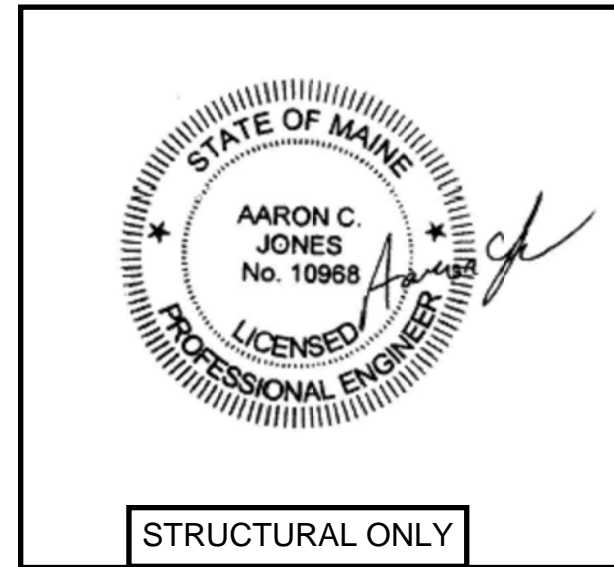
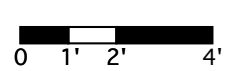


GENERAL NOTES

- 1) Smoke detectors and sprinklers as required per code
- 2) 1 HR continuous fire rated wall assembly between units
- 3) Egress windows in bedroom as noted on plan
- 4) All insulation as required per energy code
- 5) See structural plans for all framing related information



FRAMING LEGEND	
	NEW BEARING WALL
	EXIST. BEARING WALL
	HEADER
	POST BELOW / ABOVE



Scale: 1/4" = 1'-0"

Trademark Inc.
02/12/18

33 Turner Road
Portland, ME
S
103

