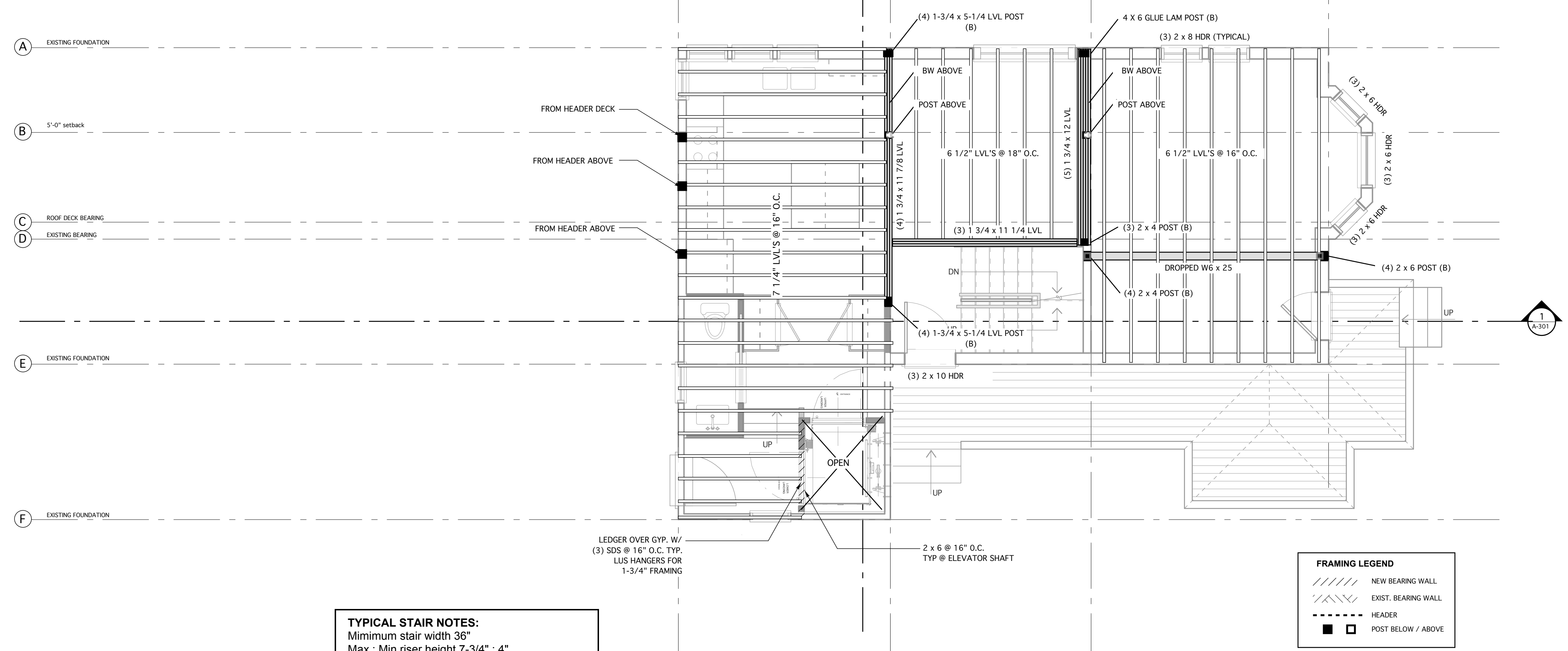
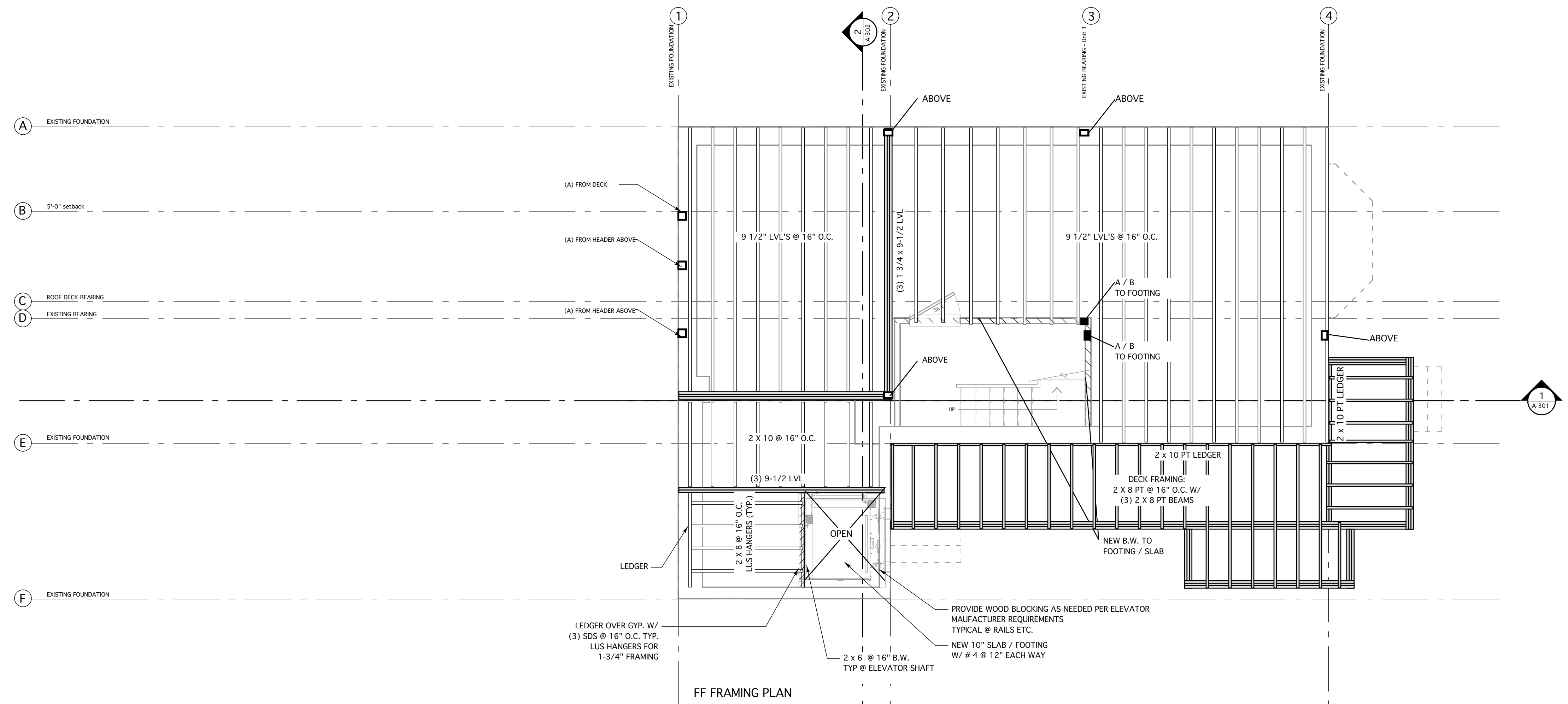
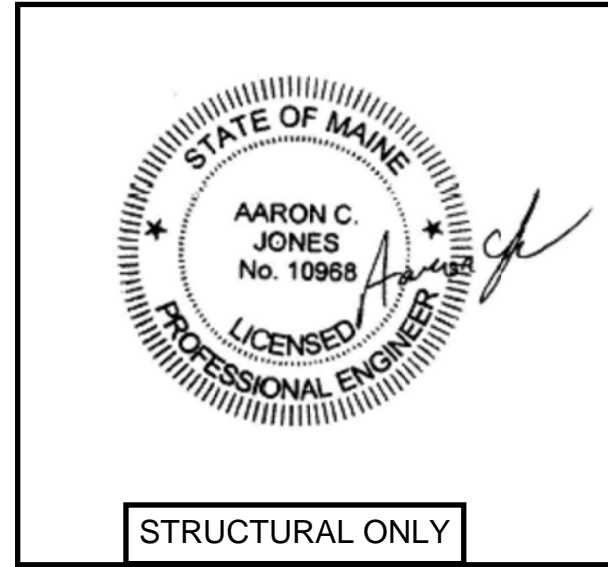


GENERAL NOTES

- 1) Smoke detectors and sprinklers as required per code
- 2) 1 HR continuous fire rated wall assembly between units
- 3) Egress windows in bedroom as noted on plan
- 4) All insulation as required per energy code
- 5) See structural plans for all framing related information



TYPICAL STAIR NOTES:
 Minimum stair width 36"
 Max : Min riser height 7-3/4" : 4"
 Minimum tread depth 10"
 Handrail height between 34"-38"
 Minimum head height 6'-8"
 3/4" - 1-1/4" nosing req. for treads less than 11"

FRAMING LEGEND	
	NEW BEARING WALL
	EXIST. BEARING WALL
	HEADER
	POST BELOW / ABOVE