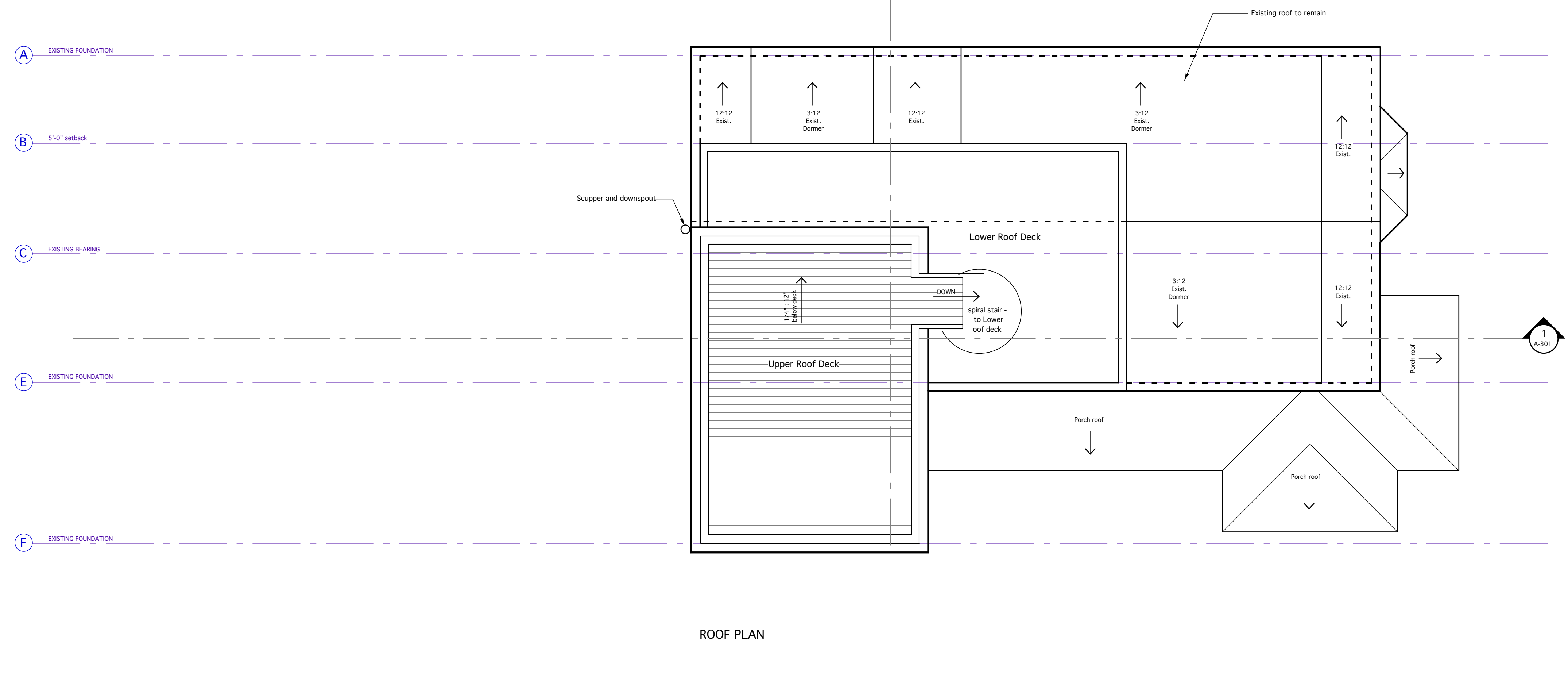
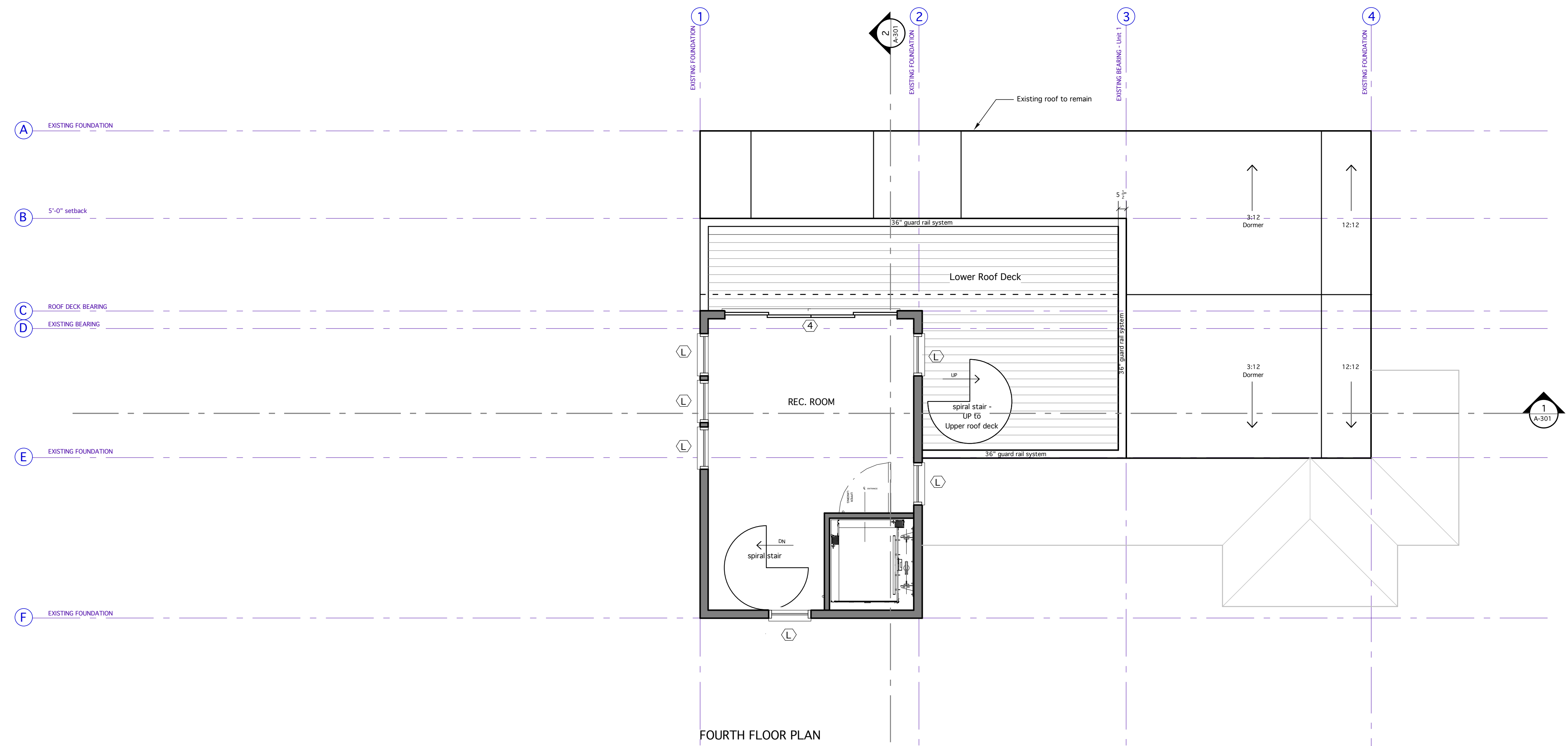
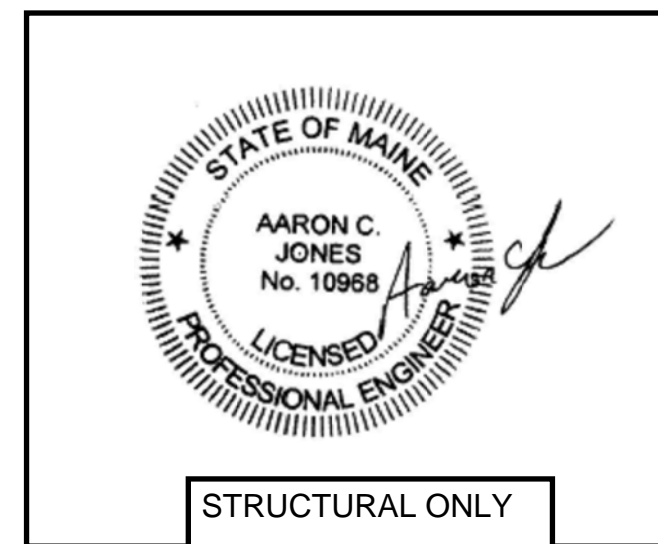


**GENERAL NOTES**

- 1) Smoke detectors and sprinklers as required per code
- 2) 1 HR continuous fire rated wall assembly between units
- 3) Egress windows in bedroom as noted on plan
- 4) All insulation as required per energy code
- 5) See structural plans for all framing related information



<p><b>LEGEND</b></p> <ul style="list-style-type: none"> <li><span style="border-bottom: 1px solid black; width: 20px; display: inline-block;"></span> New wall / renovated partition</li> <li><span style="border-bottom: 1px dashed black; width: 20px; display: inline-block;"></span> Existing wall / partition to remain or be rebuilt if necessary</li> <li><span style="border-bottom: 1px dotted black; width: 20px; display: inline-block;"></span> To Be Removed</li> </ul>	<p>0 1' 2' 4'</p>	<p><b>Trademark Inc.</b> 02/12/18 33 Turner Road Portland, ME Scale: 1/4" = 1'-0"</p>	<p>A 103</p>
	<p>PLAN NORTH</p>		