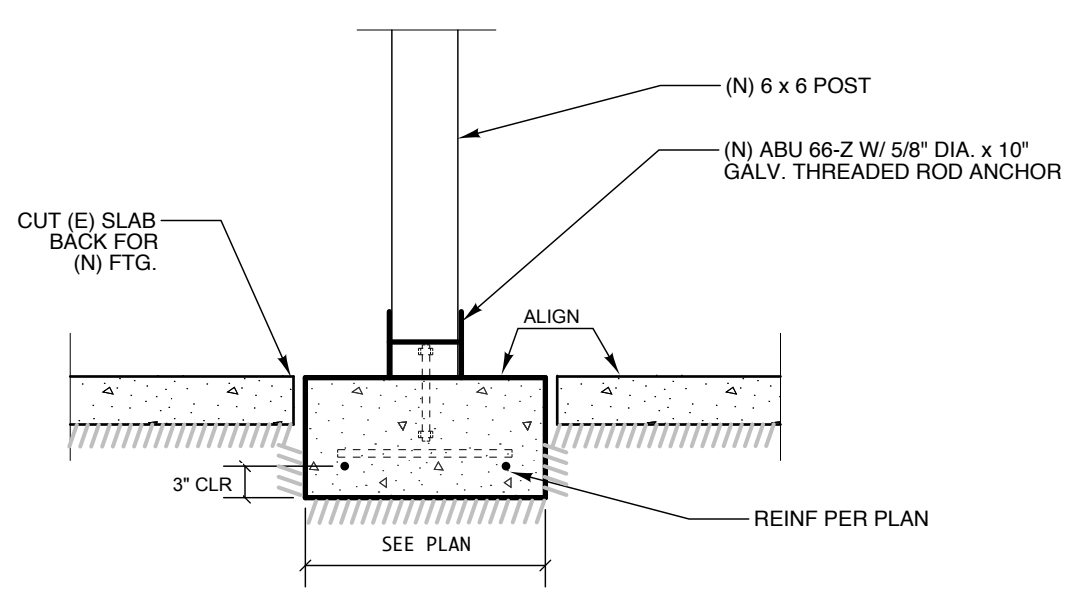
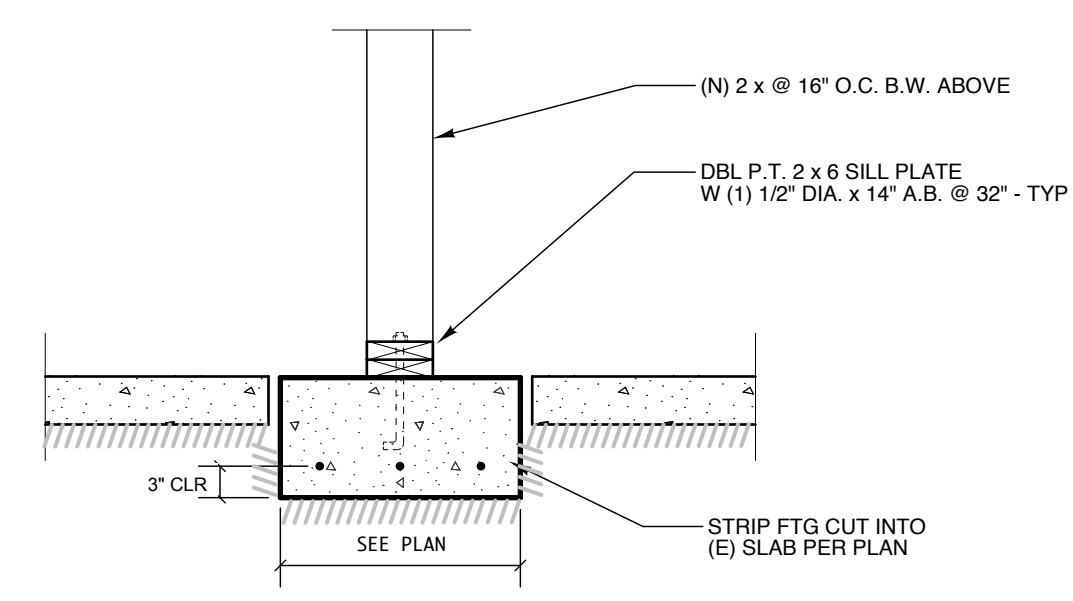


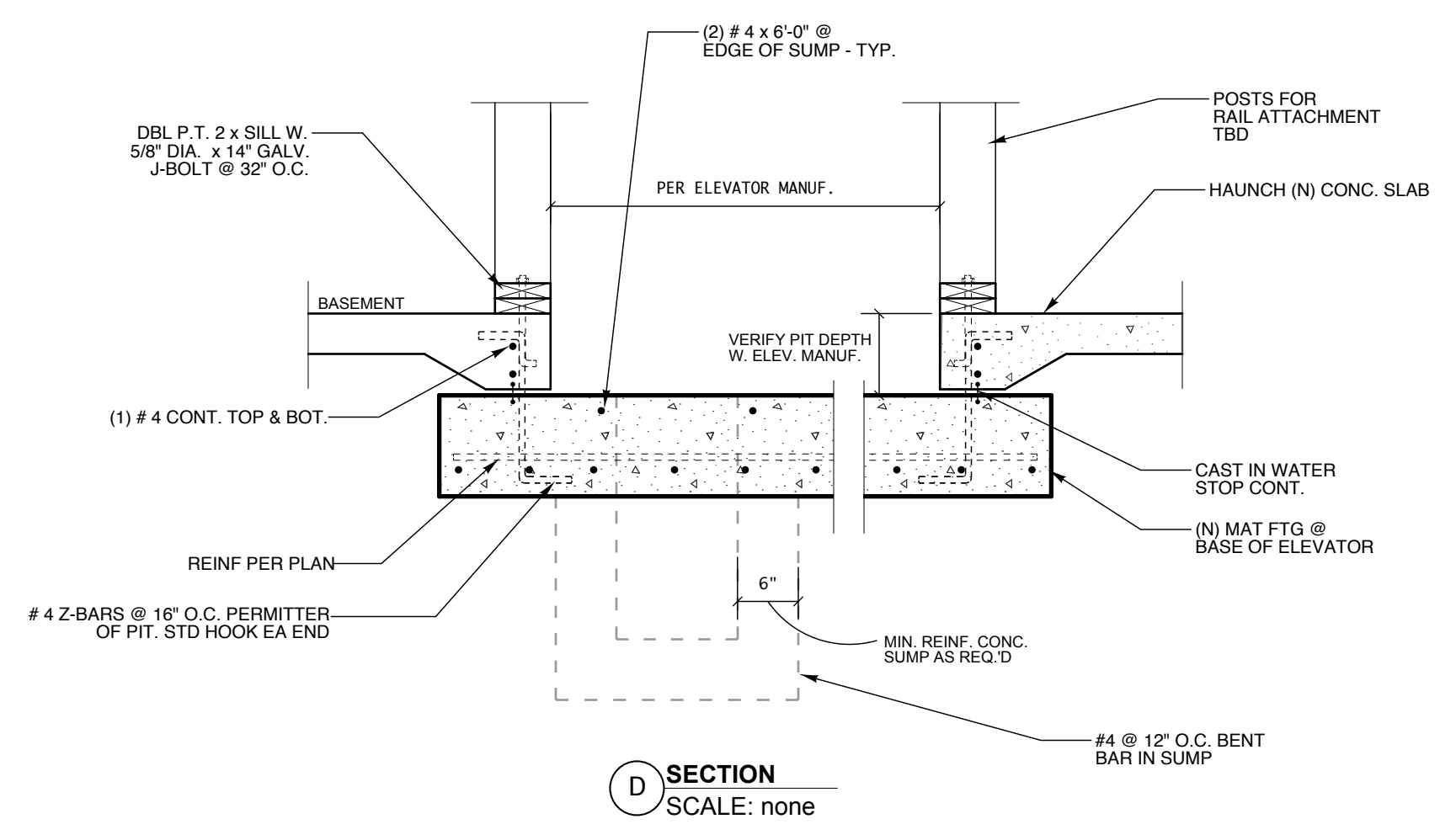
A SECTION
SCALE: none



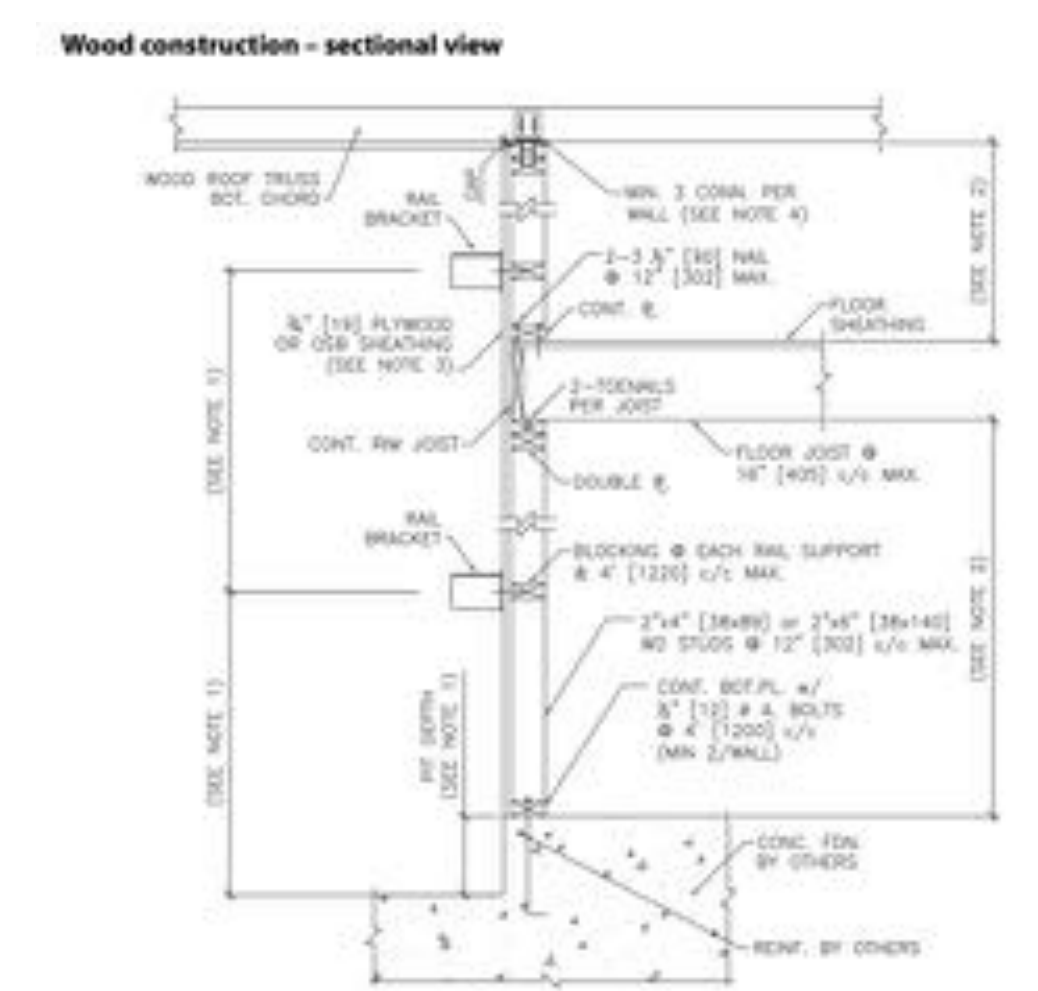
B SECTION
SCALE: none



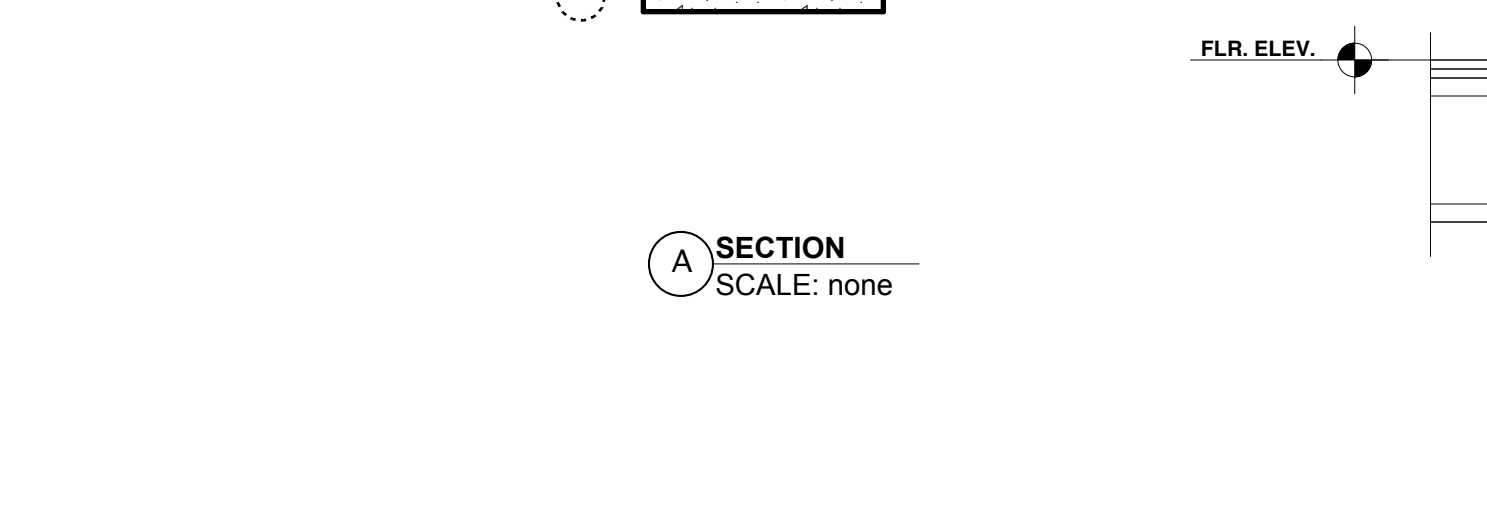
C SECTION
SCALE: none



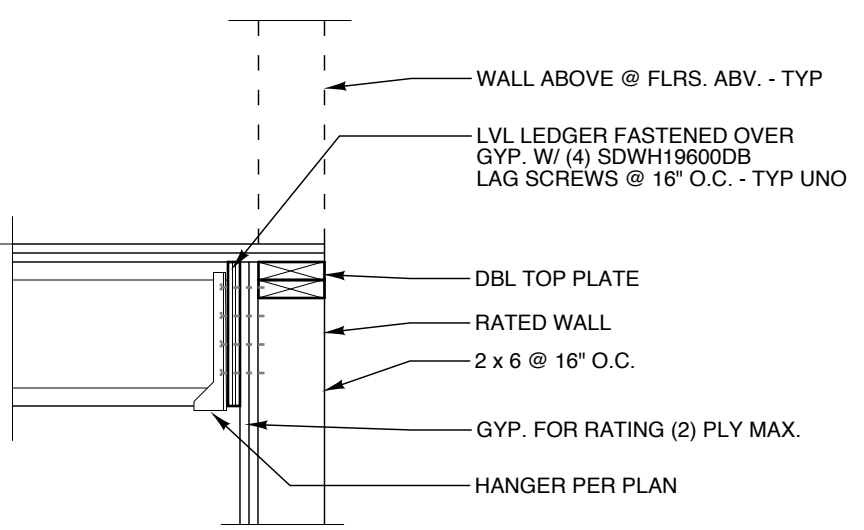
D SECTION
SCALE: none



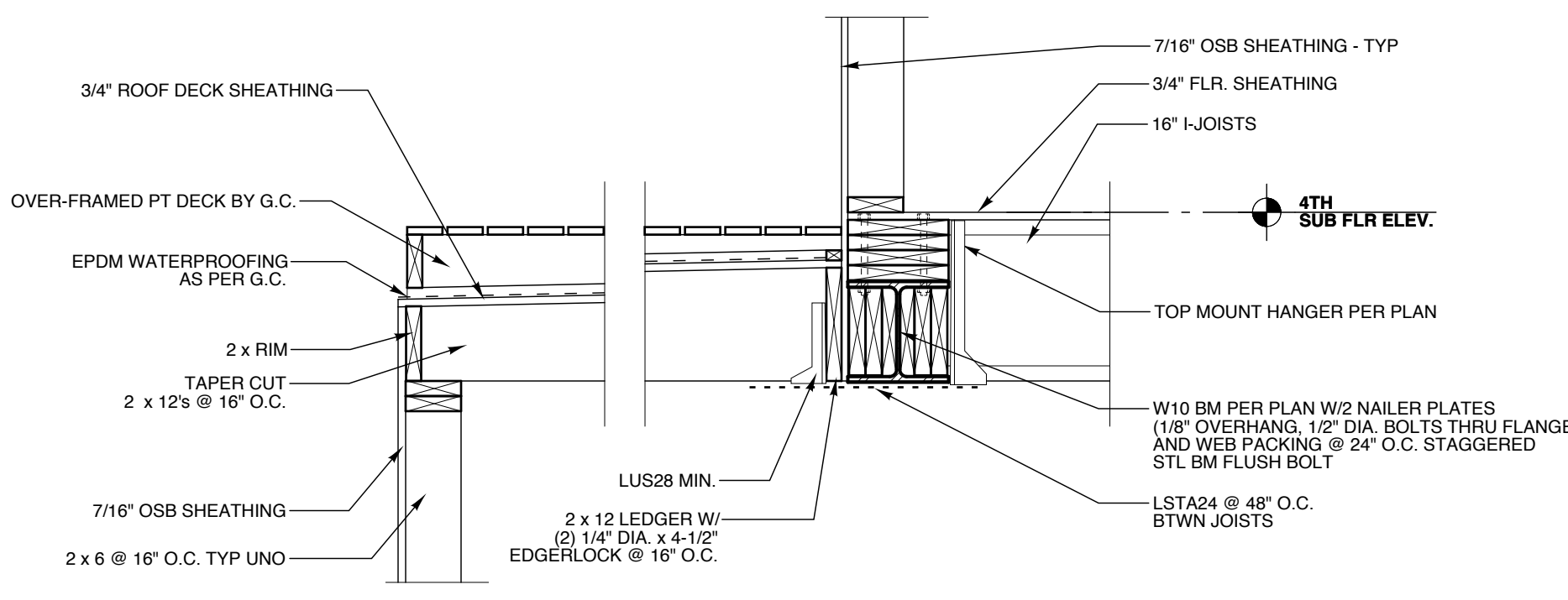
D SECTION
SCALE: none



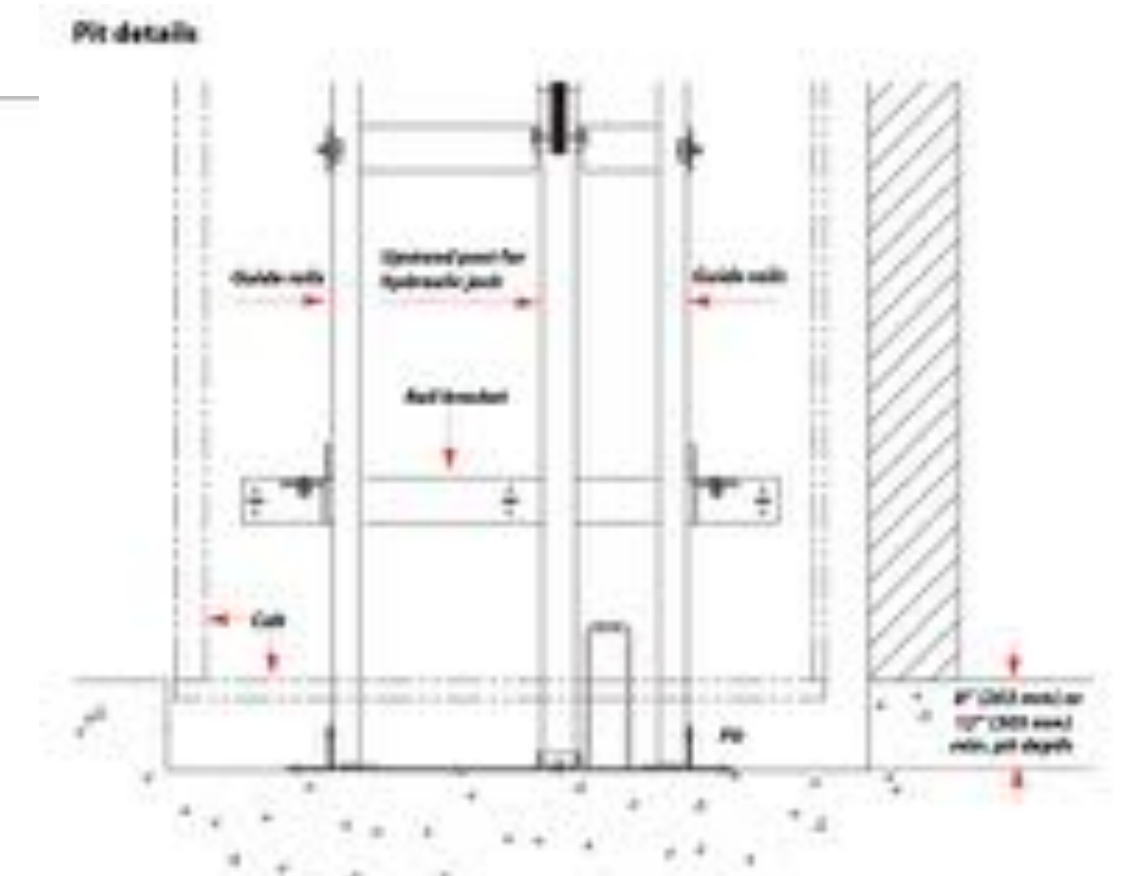
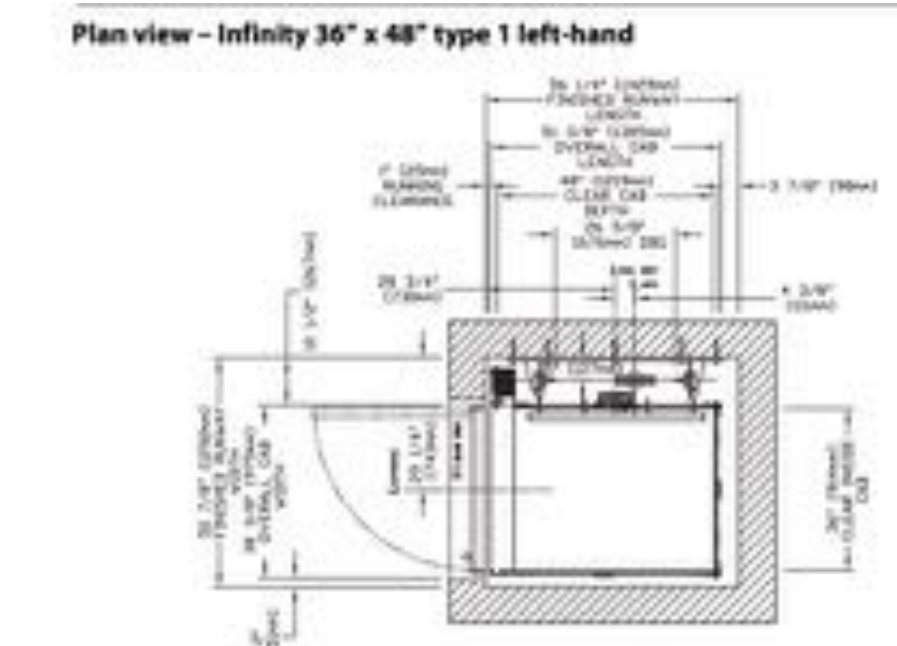
E SECTION
SCALE: none



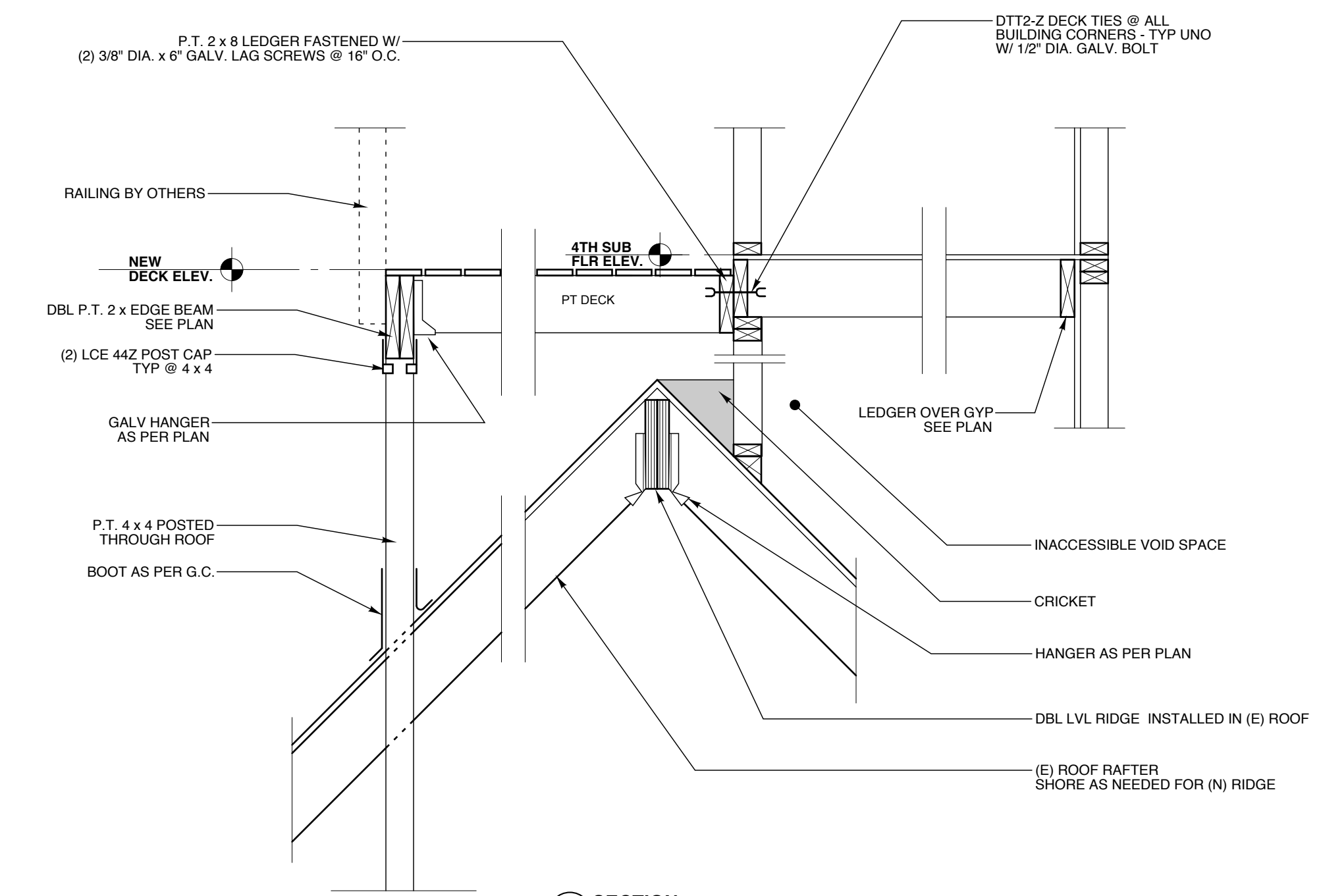
F SECTION
SCALE: none



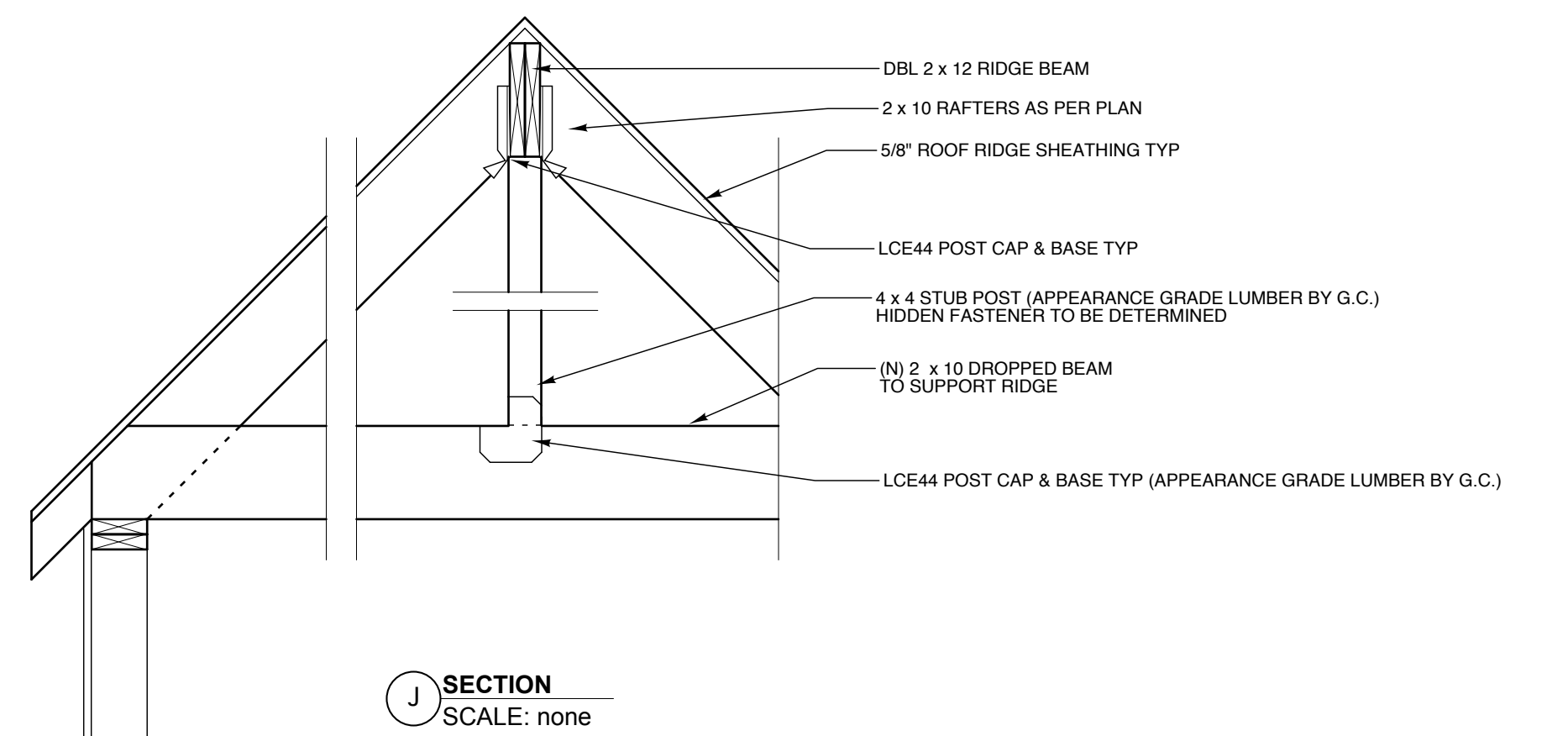
G SECTION
SCALE: none



- Hoistway and pit notes**
- A lead bearing wall is required to sustain rail reactions (refer to section 'Loads on building' on the previous page).
 - Suggested hoistway pit floor construction consists of an 8" (203 mm) concrete slab poured on a natural or compacted soil with a minimum allowable bearing pressure of 1.6 ksf.
 - The minimum compressive strength of the concrete at 28 days must be no less than 3000 PSI. All reinforcing steel (grade 60) must be placed at the bottom of the slab in two reverse directions and in a spacing of 12" (305 mm).
 - Hoistway pit floor to support a load (including impact) of 1.4 kips (6000 N) for Infinity or 1.3 kips (5600 N) for 364 A6 for Infinity HD.
 - Minimum overhead clearance of 8' (2437 mm) for 30" (762 mm) LBS 16" (403 mm) rail for 364" cable and 1.88" (47.8 mm) rail for 36" cable.
 - Minimum pit depth of 8' (2437 mm) for Infinity and 12' (3658 mm) for Infinity HD.
 - Hoistway clearances running and access clearances only. Consult your local AHJ to assure compliance with local codes.
 - Hoistway is required to be free of all pipes, wiring and obstructions not related to the operation of the elevator.

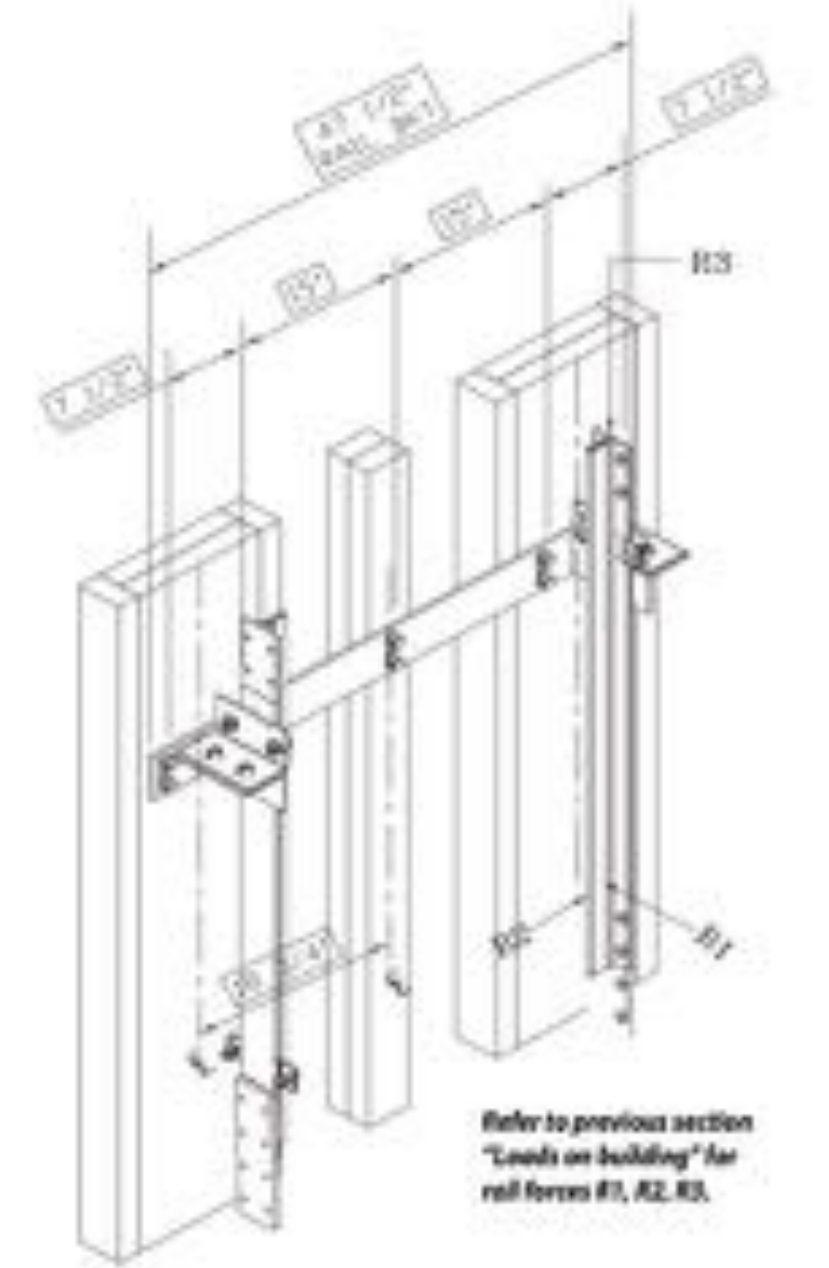


H SECTION
SCALE: none



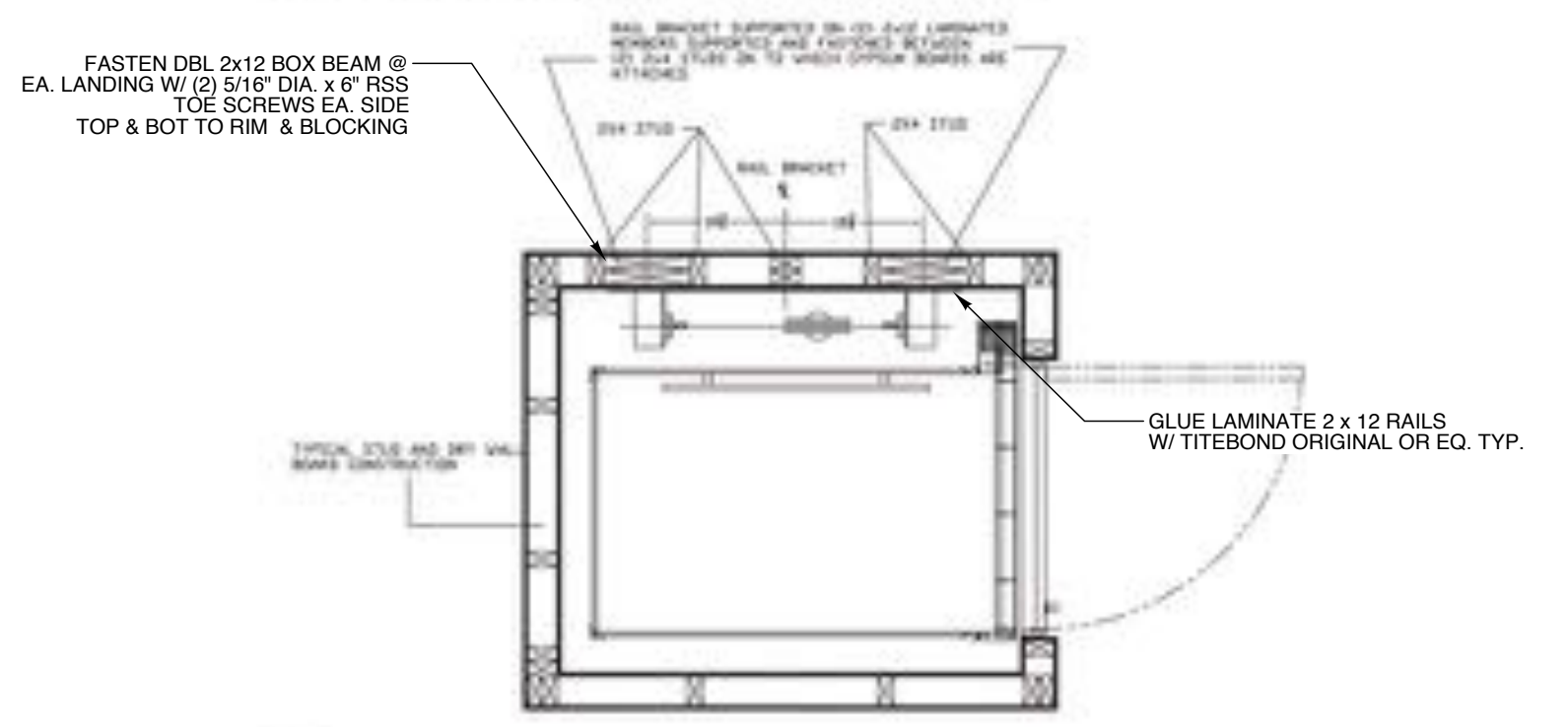
I SECTION
SCALE: none

Suggested wall configuration for wood construction (sheet 1)



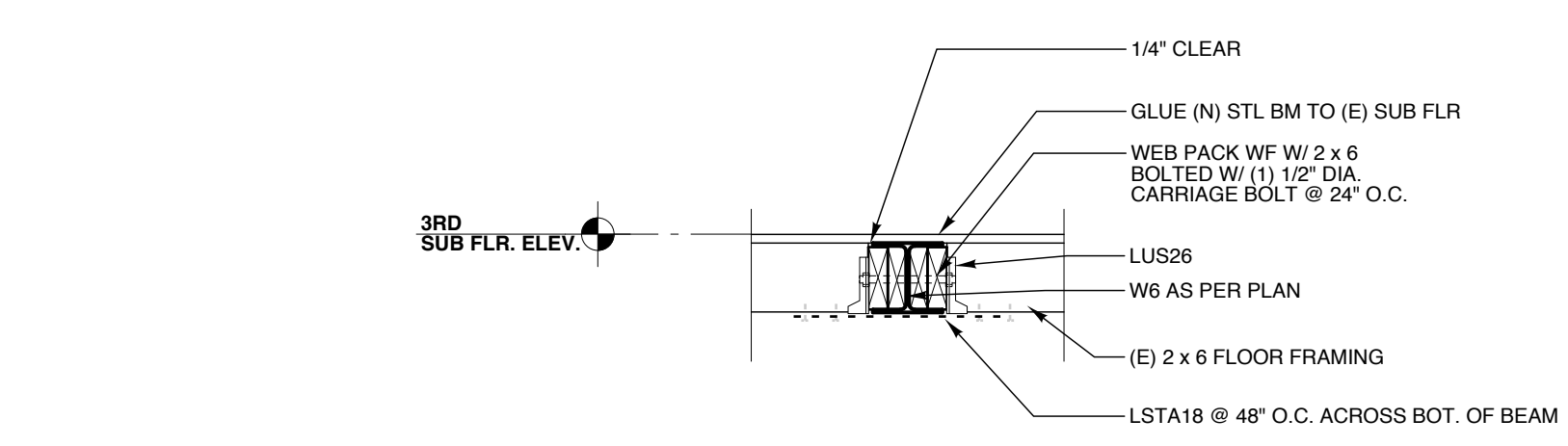
Refer to previous section "Loads on building" for rail forces #1, #2, #3.

Suggested wall configuration for wood construction (sheet 2)

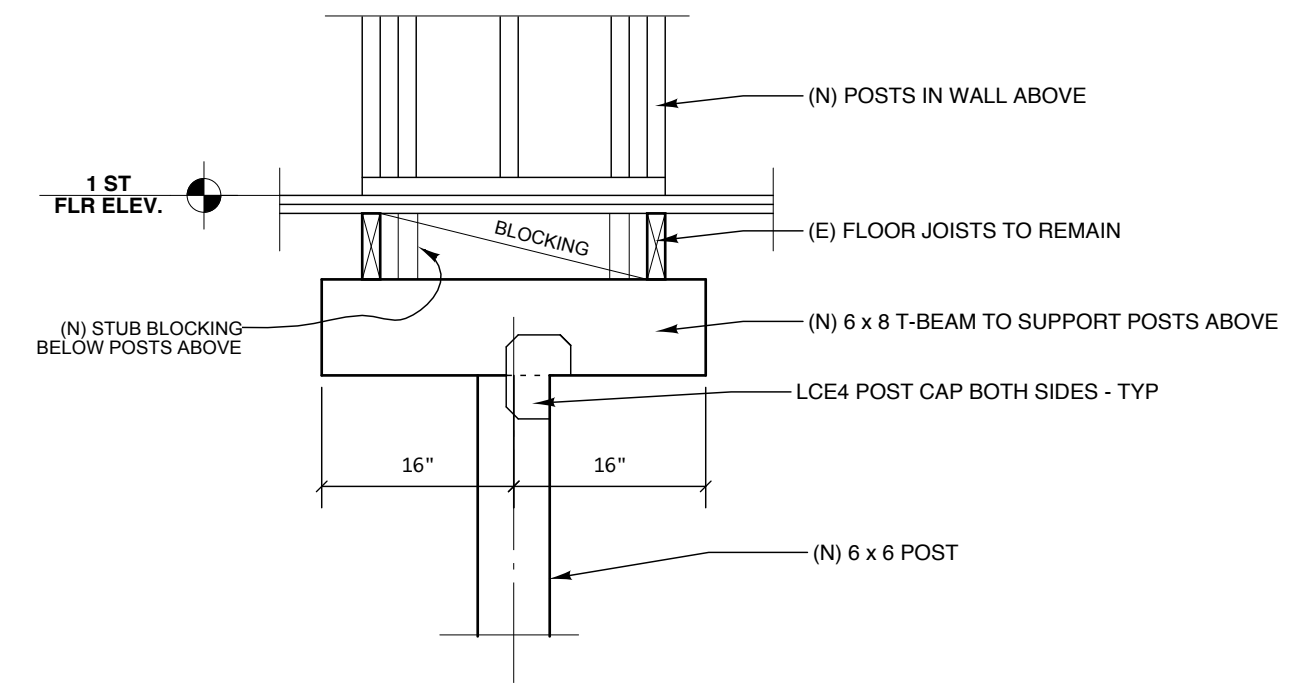


FASTEN DBL 2x12 BOX BEAM @ EA. LANDING W/ (2) 5/16" DIA. x 6" RSS TOR SCREWS EA. SIDE TOP & BOT TO RIM & BLOCKING

GLUE LAMINATE 2 x 12 RAILS W/ TITEBOND ORIGINAL OR EQ. TYP.



J SECTION
SCALE: none



K SECTION
SCALE: none

