

LIGHTING LEGEND AND SCHEDULE		
	Exterior motion activated	
	Recessed	
	Recessed wall wash	
	Ceiling mounted light fixture or hanging pendant	
	Wall mounted light fixture	
	Track / LED Strip lighting	
	Under-cabinet	
	Switch	
	3-way switch	
	Jamb switch	
	bathroom exhaust fan	
	device in millwork	
	switched outlet	
	com. line	
	cable	

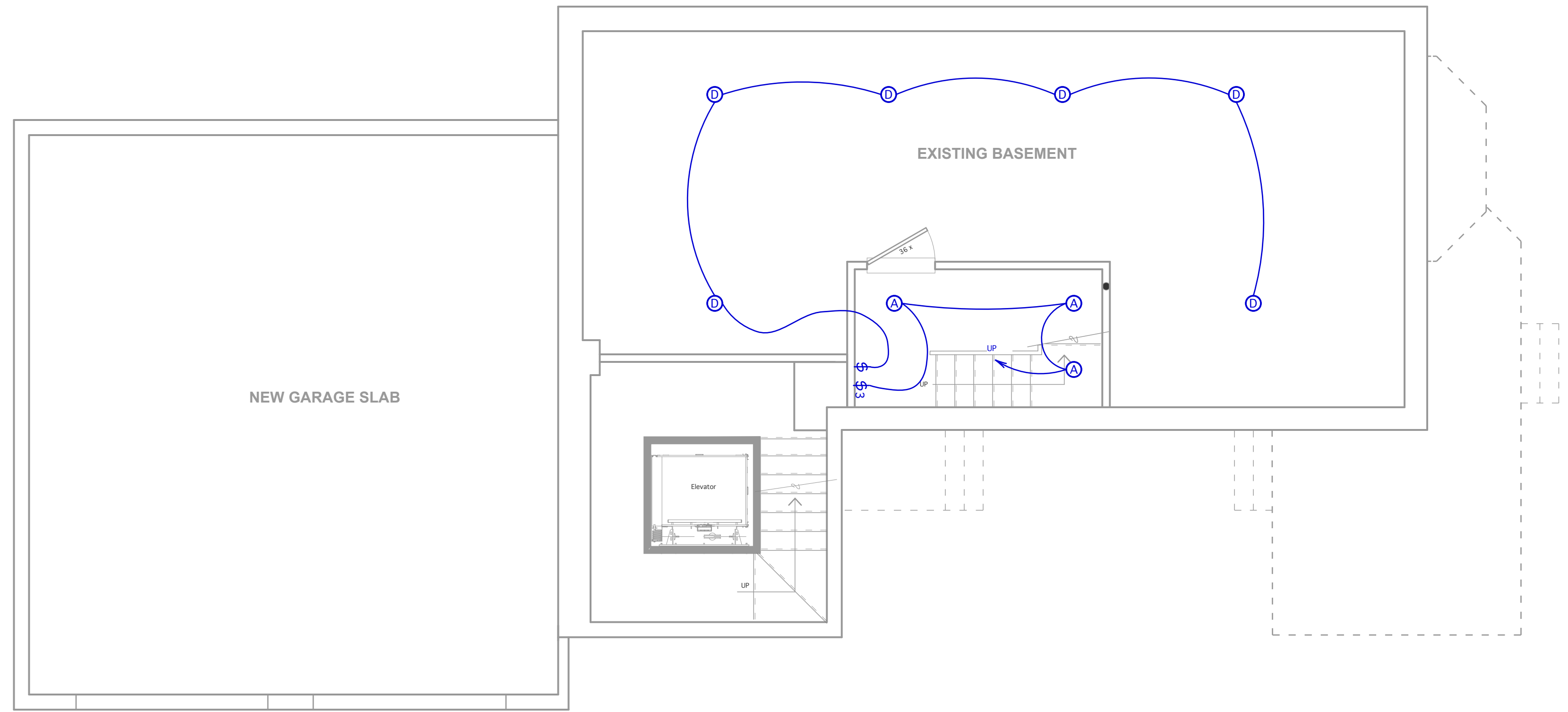
  

Fixture	location	notes
A	recessed	
B	recessed for wet location	
C	sconce	
D	surface mounted	
E		
F		
G		
H		
I		
J		
K		
L		
M		
N		
O		
P		
Q		
R		
S		
T		
U		
V		
X	exterior light	
Y	exterior light	
Z	exterior motion light	

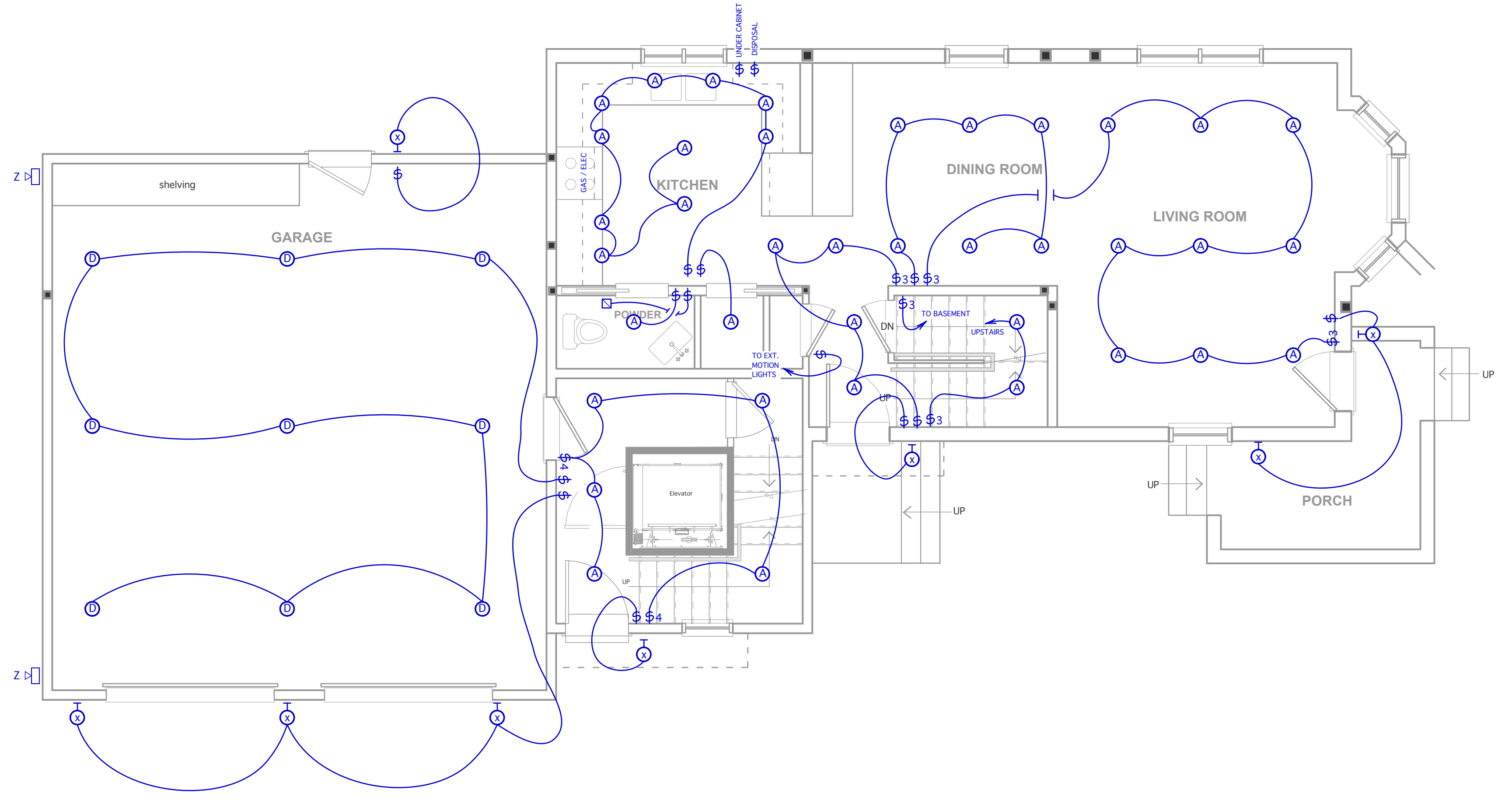
  

NOTES:

- 1) All fixtures to be dimmable when possible (confirm with owners)
- 2) All switches to have dimmers when possible (confirm with owners)
- 3) Owners to confirm all fixture prior to purchase
- 4) Electrician to coordinate location of all fixtures with architect prior to installation of all lighting electrical boxes and switches
- 5) Outlets, GFI outlets, smoke detectors and bathroom exhaust fans to be installed as per code
- 6) Cable / communications - type / locations to be coordinated with owners



BASEMENT LIGHTING PLAN



FIRST FLOOR LIGHTING PLAN