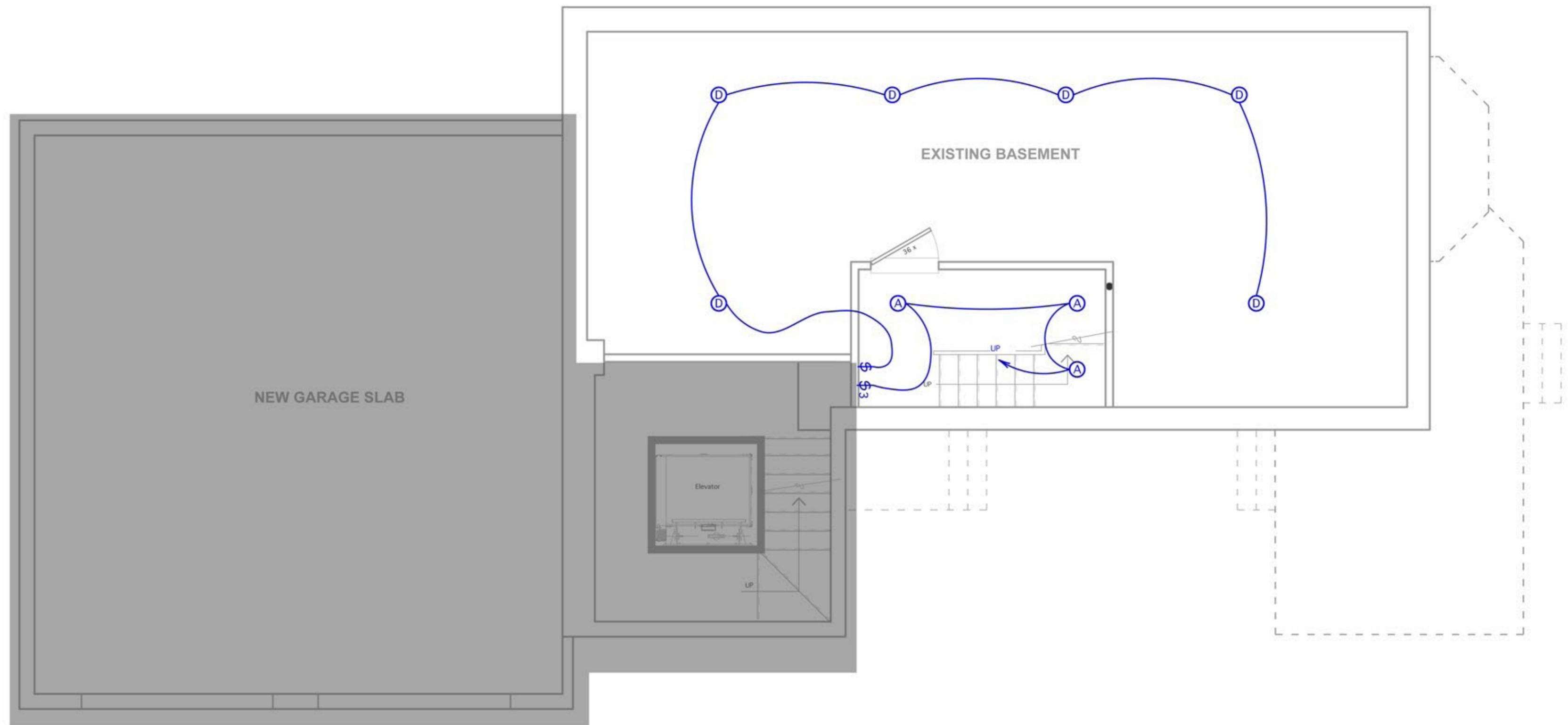
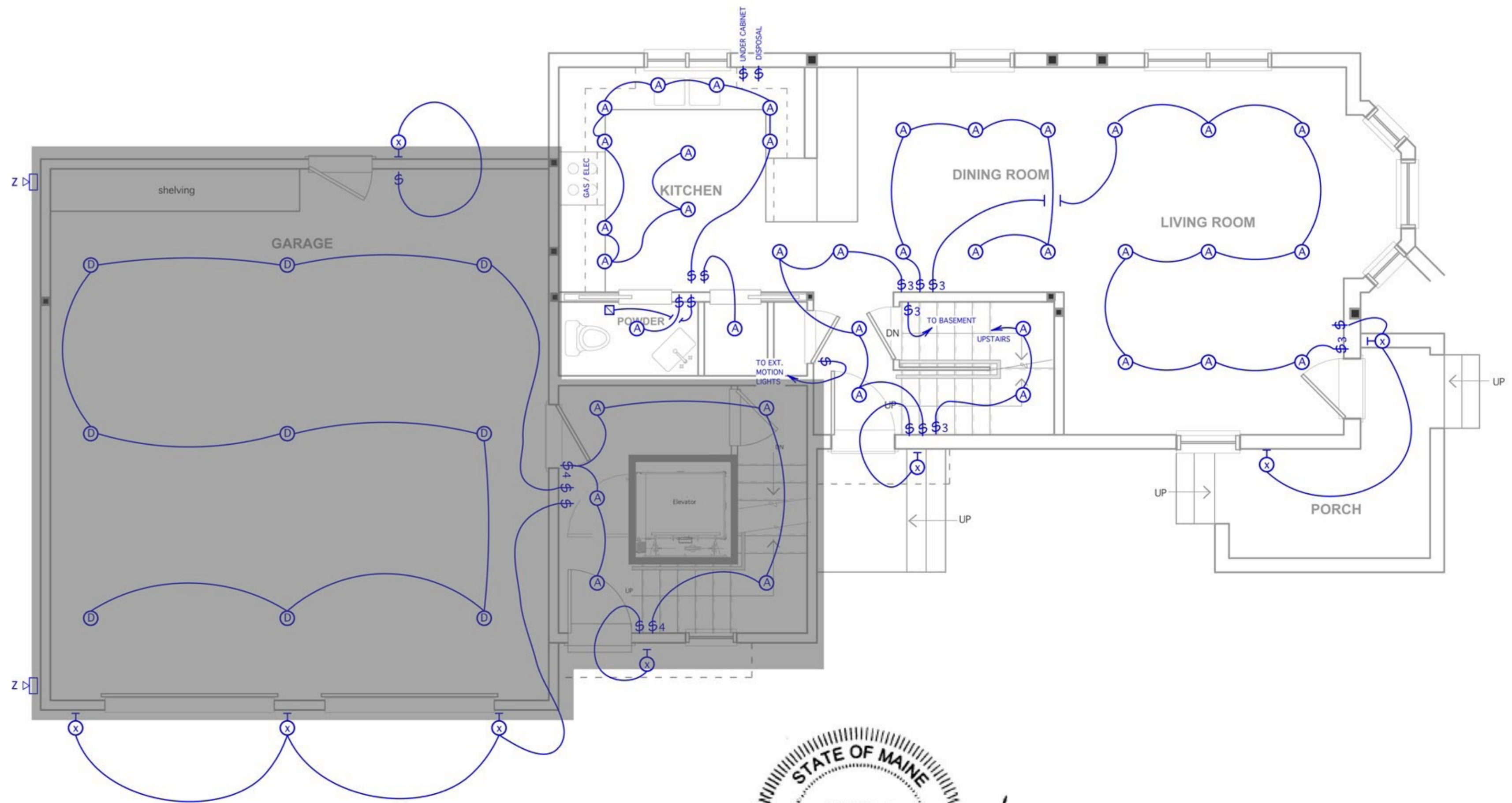


LIGHTING LEGEND AND SCHEDULE		
	Exterior motion activated	
	Recessed	
	Recessed wall wash	
	Ceiling mounted light fixture or hanging pendant	
	Wall mounted light fixture	
	Track / LED Strip lighting	
	Under-cabinet	
	Switch	
	3-way switch	
	Jamb switch	
	bathroom exhaust fan	
	device in millwork	com. line
	switched outlet	cable
Fixture	location	notes
A	recessed	
B	recessed for wet location	
C	sconce	
D	surface mounted	
E		
F		
G		
H		
I		
J		
K		
L		
M		
N		
O		
P		
Q		
R		
S		
T		
U		
V		
X	exterior light	
Y	exterior light	
Z	exterior motion light	
NOTES:		
1) All fixtures to be dimmable when possible (confirm with owners)		
2) All switches to have dimmers when possible (confirm with owners)		
3) Owners to confirm all fixture prior to purchase		
4) Electrician to coordinate location of all fixtures with architect prior to installation of all lighting electrical boxes and switches		
5) Outlets, GFI outlets, smoke detectors and bathroom exhaust fans to be installed as per code		
6) Cable / communications - type / locations to be coordinated with owners		



BASEMENT LIGHTING PLAN



FIRST FLOOR LIGHTING PLAN

AREAS IN GRAY
NOT INCLUDED
IN THIS PERMIT

7/19/17 STAMP
FOR STRUCTURE ONLY



Trademark Inc.
FOR PERMIT 07/12/17