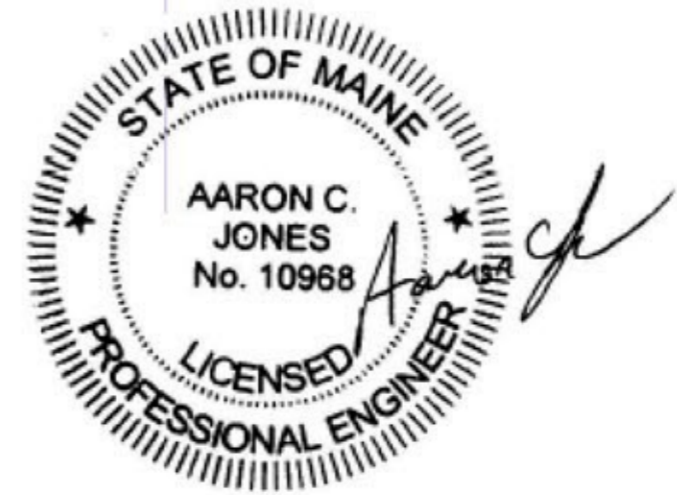
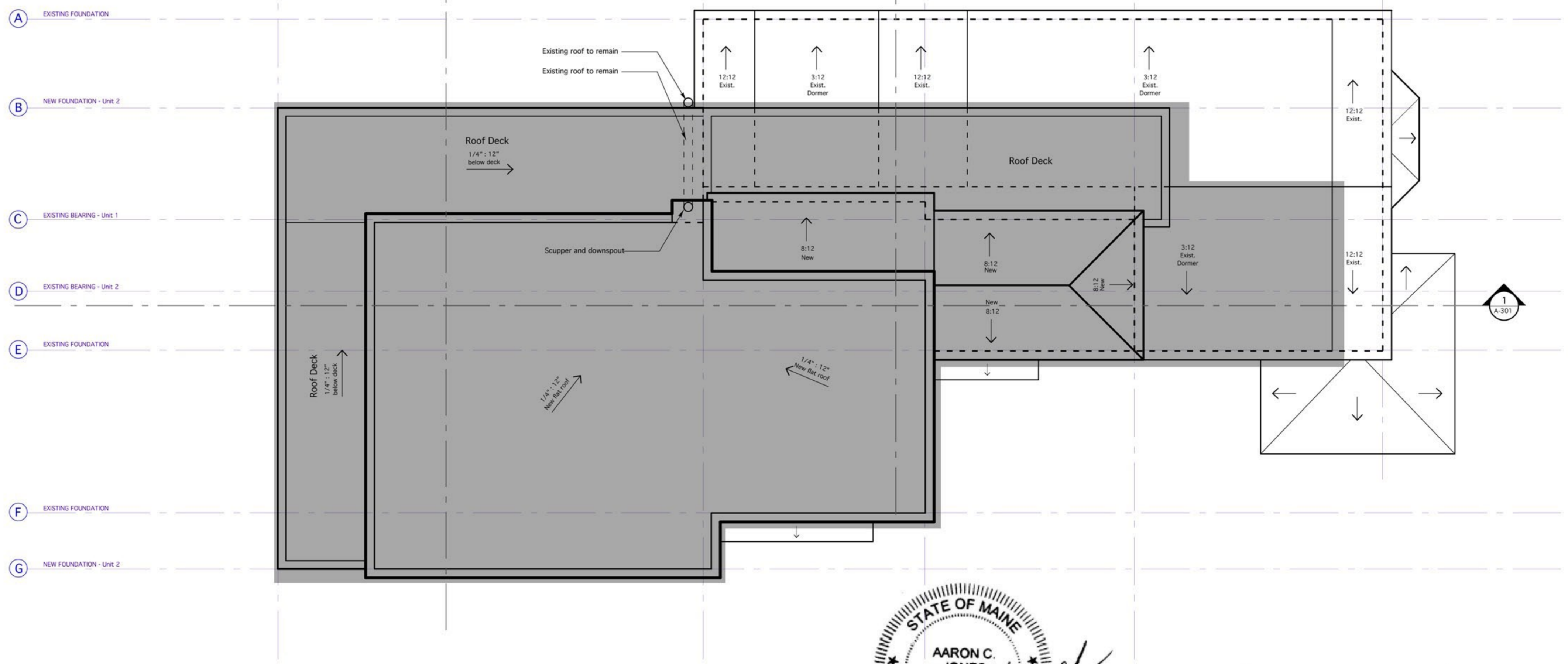
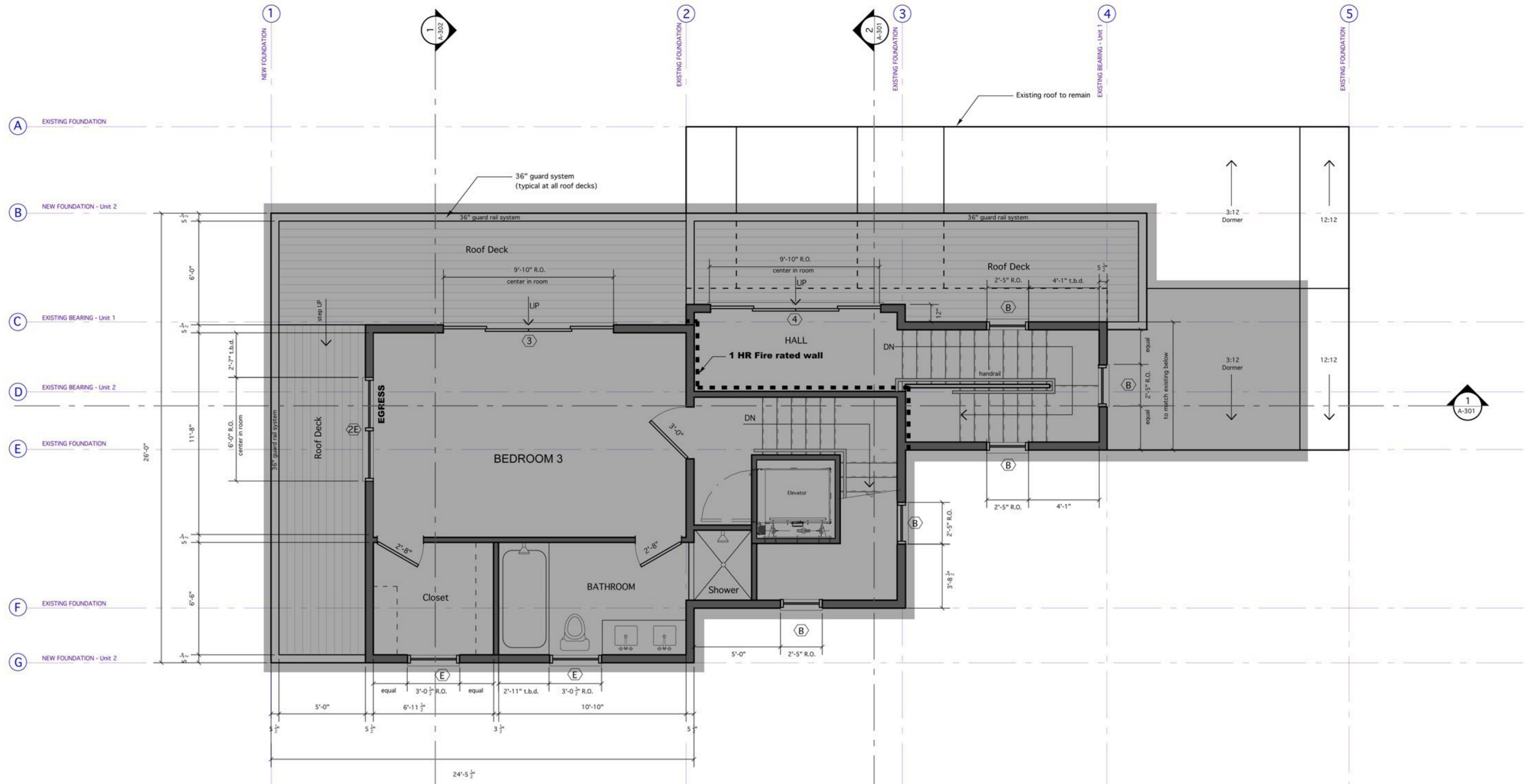


GENERAL NOTES

- 1) Smoke detectors and sprinklers as required per code
- 2) 1 HR continuous fire rated wall assembly between units
- 3) Egress windows in bedroom as noted on plan
- 4) All insulation as required per energy code
- 5) See structural plans for all framing related information

**AREAS IN GRAY
NOT INCLUDED
IN THIS PERMIT**



7/19/17 STAMP
 FOR STRUCTURE ONLY

LEGEND

	New wall / renovated partition
	New wall / renovated partition 1 HR fire rated wall assembly
	Existing wall / partition to remain or be rebuilt if necessary
	To Be Removed

Trademark Inc.
 FOR PERMIT 07/12/17

33 Turner Road
 Portland, ME
 Scale: 1/4" = 1'-0"

A
 103

