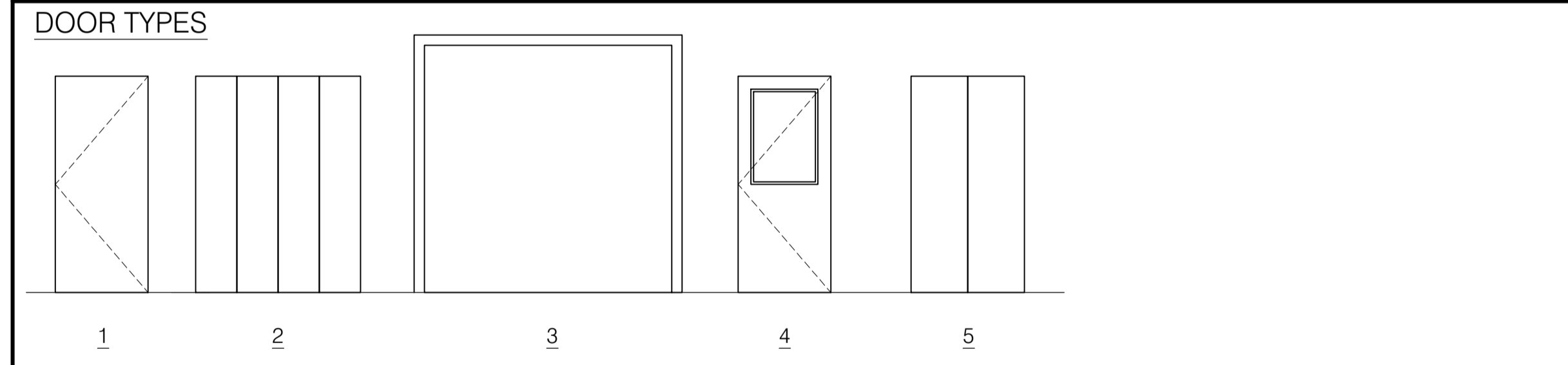


DOOR SCHEDULE									
DOOR #	FROM	TO	SIZE	DOOR MATERIAL	DOOR TYPE	DOOR RATING	FRAME	HARDWARE SET	NOTES
001	STAIR	BASEMENT	2'-6" X 6'-8"	WD	1	1 HR	HM	03	
002	BASEMENT	STORAGE	3'-0" X 6'-8"	WD	1		WD	04	
003	BASEMENT	STORAGE	3'-0" X 6'-8"	WD	1		WD	04	
100	EXTERIOR	KITCHEN	3'-0" X 6'-8"	COMPOSITE	4	-	COMPOSITE	02	1
101	KITCHEN	PANTRY	2'-6" X 6'-8"	WD	1	-	WD	06	
102	LIVING	STAIR	2'-6" X 6'-8"	WD	1	1 HR	HM	07	
103	LIVING	BATH	2'-6" X 6'-8"	WD	1	-	WD	01	
104	LIVING	BEDROOM 1	2'-6" X 6'-8"	WD	1	-	WD	01	
105	BEDROOM 1	CLOSET	2'-6" X 6'-8"	WD	1	-	WD	06	
106	LIVING	BEDROOM 2	2'-6" X 6'-8"	WD	1	-	WD	01	
107	BEDROOM 2	CLOSET	3'-8" X 6'-8"	WD	2	-	WD	05	
200	EXTERIOR	STAIR	3'-0" X 6'-8"	COMPOSITE	4	-	COMPOSITE	02	1
201	STAIR	DINING	3'-0" X 6'-8"	WD	1	1 HR	HM	03	
202	KITCHEN	PANTRY	2'-6" X 6'-8"	WD	1	-	WD	06	
203	LIVING	STAIR	2'-6" X 6'-8"	WD	1	1 HR	HM	07	
204	LIVING	CLOSET	2'-6" X 6'-8"	WD	1	-	WD	06	
205	LIVING	BATH	2'-6" X 6'-8"	WD	1	-	WD	01	
206	LIVING	BEDROOM 1	2'-6" X 6'-8"	WD	1	-	WD	01	
207	BEDROOM 1	CLOSET	3'-8" X 6'-8"	WD	2	-	WD	05	
208	LIVING	BEDROOM 2	2'-6" X 6'-8"	WD	1	-	WD	01	
209	BEDROOM 2	CLOSET	3'-8" X 6'-8"	WD	2	-	WD	05	
210	LIVING	BEDROOM 3	2'-6" X 6'-8"	WD	1	-	WD	01	
211	BEDROOM 3	CLOSET	(2) 2'-6" X 6'-8"	WD	1	-	WD	06	
212	BEDROOM 3	BATH	2'-6" X 6'-8"	WD	1	-	WD	01	
213	LIVING	EXTERIOR	3'-0" X 6'-8"	COMPOSITE	1	-	COMPOSITE	02	
300	EXTERIOR	STAIR	3'-0" X 6'-8"	COMPOSITE	4	-	COMPOSITE	02	1
301	EXTERIOR	GARAGE	(OH) 8'-0" X 8'-0"		3				
302	EXTERIOR	GARAGE	(OH) 8'-0" X 8'-0"		3				
303	GARAGE	CLOSET	2'-6" X 6'-8"	WD	1	-	WD	06	
304	STAIR	KITCHEN	3'-0" X 6'-8"	WD	1	1 HR	HM	03	
305	KITCHEN	BATH	2'-6" X 6'-8"	WD	1	-	WD	01	
306	BEDROOM	CLOSET	2'-6" X 6'-8"	WD	1	-	WD	06	
307	BEDROOM	BATH	2'-6" X 6'-8"	WD	1	-	WD	01	
308	STAIR	ROOF DECK	3'-0" X 6'-8"	COMPOSITE	1	-	COMPOSITE	02	
309	GARAGE	STAIR	3'-0" X 6'-8"	WD	1	1 HR	HM	07	
310	EXTERIOR	GARAGE	2'-6" X 6'-8"	COMPOSITE	4	-	COMPOSITE	02	1



GENERAL DOOR SCHEDULE NOTES:

- ALL DOOR HANDLES TO BE ADA COMPLIANT LEVER HANDLES.
- ALL INTERIOR DOOR HARDWARE FINISH TBD
- DOORS WITHIN UNITS FINISH TBD
- PROVIDE A COMMON SPACES KEY FOR TENANT ENTRANCES AND STORAGE AREA (ISSUED TO EACH TENANT)

HARDWARE SETS:

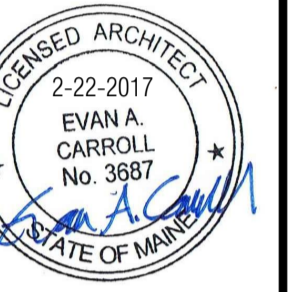
- | | | |
|----|----------------------|---|
| 01 | BED/BATH DOORS: | (3) HINGES, STRIKE, DOOR STOP, LEVER, BED/BATH LOCKSET |
| 02 | EXTERIOR ENTRY DOOR: | (3) HINGES, STRIKE, DOOR STOP, THRESHOLD, SWEEP ENTRY LOCKSET, GASKET, LEVER, METAL PROTECTIVE TRIM |
| 03 | STAIRWAY DOOR | (3) HINGES, SOFT CLOSE DAMPER, STRIKE, DOOR STOP, FREE PASSAGE LATCH ASSEMBLY, LEVER, CLOSER |
| 04 | STORAGE DOOR: | (3)HINGES, PADLOCK HARDWARE |
| 05 | BIFOLD CLOSET DOOR | HINGES, CORES |
| 06 | PANTRY/CLOSET DOOR | (3) HINGES, PASSAGE LOCKSET |
| 07 | UNIT STAIR DOOR | (3) HINGES, SOFT CLOSE DAMPER, STRIKE, DOOR STOP, SINGLE CYLINDER DEADBOLT, LOCKSET, LEVER |

DOOR SCHEDULE NOTES:

1. SAFETY GLAZING
2. -
3. -
4. -
5. -
6. -



Bild Architecture
 PO Box 8235
 Portland, ME
 04104
 207.408.0168
 evan@bildarchitecture.com



PROJECT NO.
16035
 PROJECT NAME
44 QUEBEC
 PORTLAND, ME

REVISIONS

1	
2	
3	
4	
5	

DRAWN BY
EMW
 SHEET TITLE
SCHEDULES

ISSUE DATE
2.22.17
 SHEET SCALE
 1/4" = 1'-0"