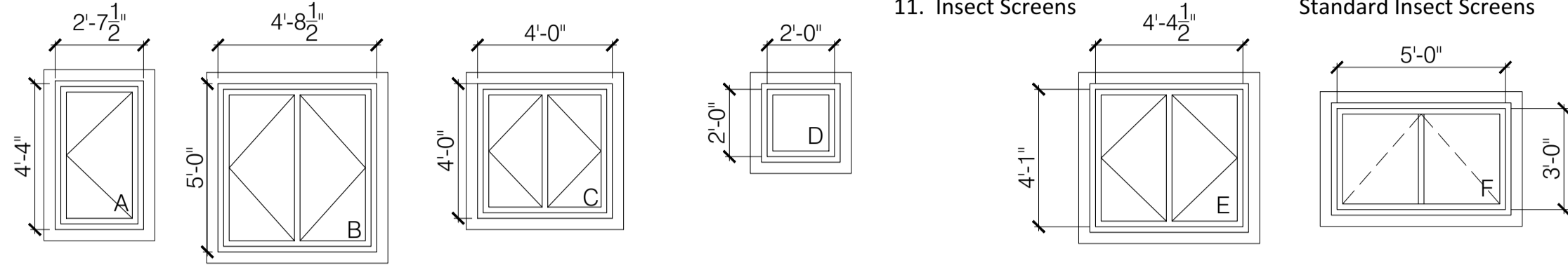


WINDOW SCHEDULE				
TYPE	SIZE (ROUGH OPENING)	MATERIAL	OPERATION	NOTES
A	4'-0" X 2'-6"	-	CASEMENT OR FIXED	1,2,3,4,5
B	4'-0" X 5'-0"	-	CASEMENT/ FIXED	1,2,3,4,5
C	3'-4" X 4'-6"	-	CASEMENT/ FIXED	2,4,5
D	2'-0" X 2'-0"	-	FIXED	2,4,5
E	4'-1" X 4'-4 1/2"	-	CASEMENT/ FIXED	2,4,5
F	3'-0" X 5'-0"	-	AWNING	2,4,5

- WINDOW SCHEDULE NOTES:**
- SAFETY GLAZING DENOTED BY (T) SHOWN ON BLDG. ELEVATIONS
 - ALL WINDOWS TO HAVE A MAXIMUM U-FACTOR OF 0.35
 - WINDOWS LABELED "EGRESS WINDOW" IN PLAN MUST COMPLY WITH: MIN AREA: 5.7SF
MIN HEIGHT: 24"
MIN WIDTH: 20"
 - WINDOWS TO BE THERMALLY BROKEN
 - SEE ELEVATIONS FOR OPERATION

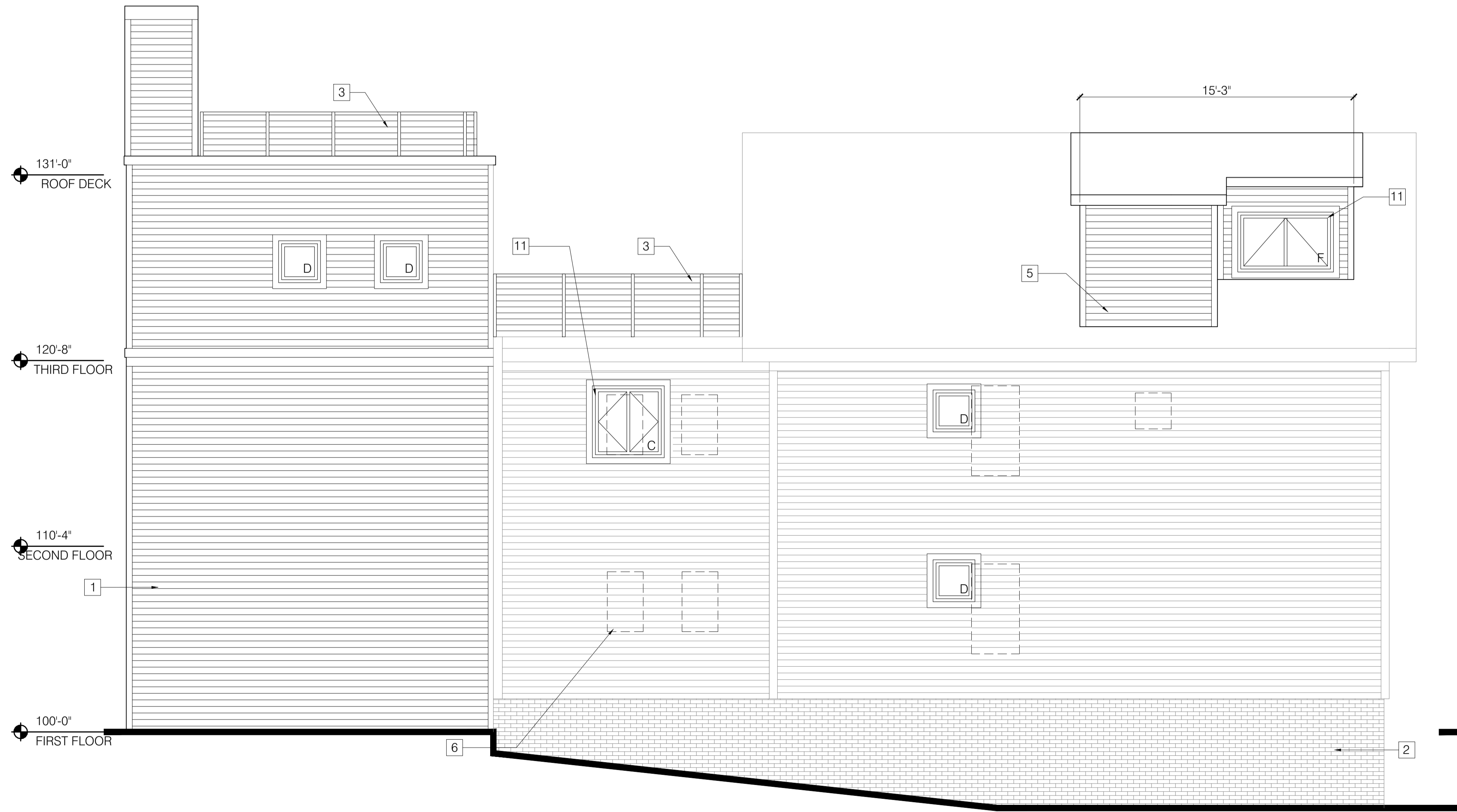
- WINDOW SPECIFICATIONS:**
- Size and window configuration. See Window Schedule
 - Color options. To be selected
 - Factory Mulling Capability. Preferred
 - Design Pressure Rating. 25
 - U Factor. 0.35 or lower
 - Material. To be selected
 - Glazing Type. To be selected
 - Hardware type. Washing from interior preferred
 - Exterior Washing Capability. 10 years
 - Warranty (Window & glazing units). Standard Insect Screens
 - Insect Screens.



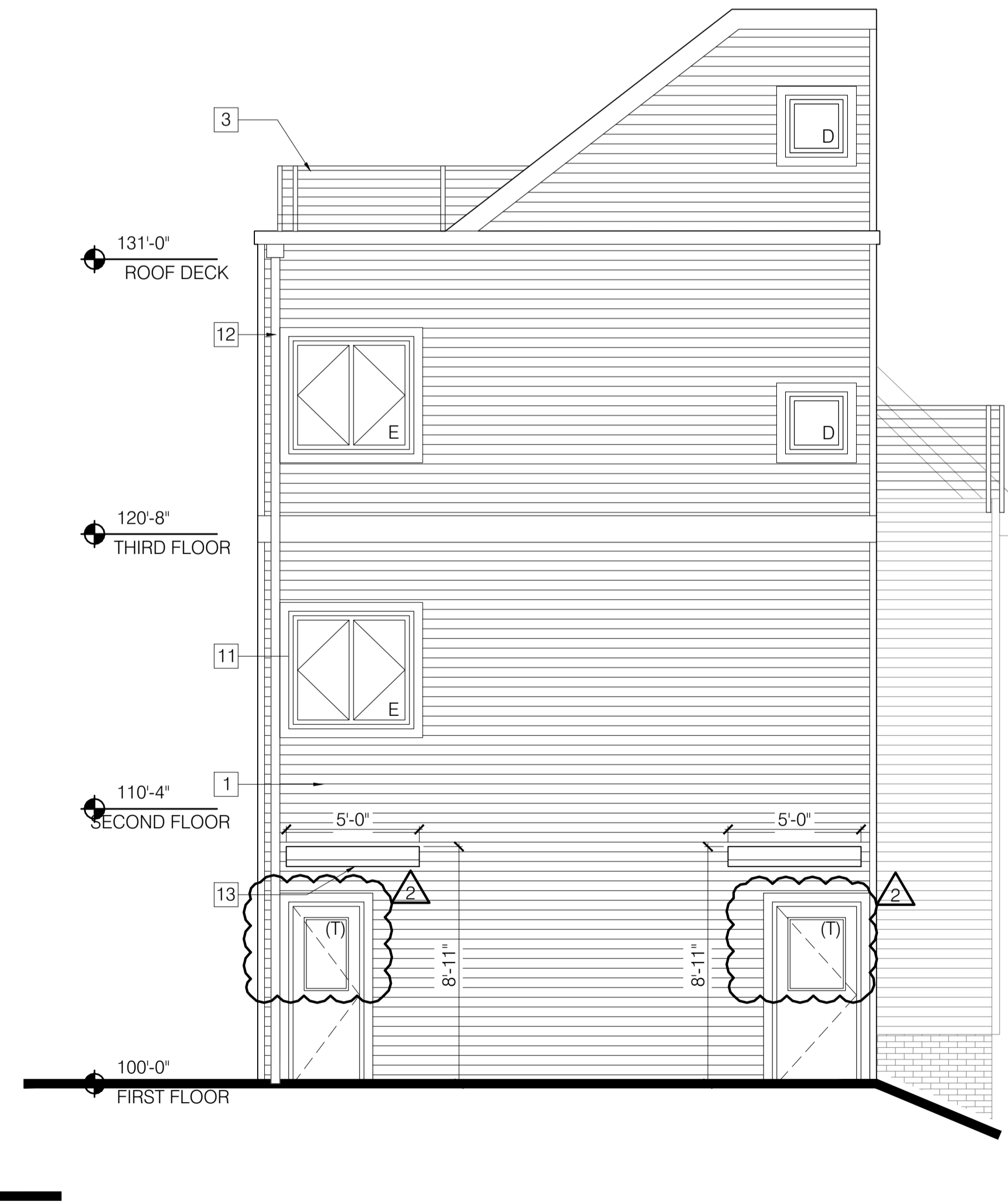
F.F.E.

WINDOW A	WINDOW B	WINDOW C	WINDOW D	WINDOW E	WINDOW F
10 SF	20 SF	15 SF	4 SF	18 SF	10 SF

- KEYNOTES:**
- NEW CLAPBOARD SIDING
 - EXISTING BRICK
 - FABRICATED METAL GUARD SYSTEM
 - NEW ADDITION TO EXISTING DORMER
 - NEW DORMER
 - EXISTING WINDOW TO BE REMOVED (TYP)
 - NEW EXTERIOR ENTRANCE
 - NEW EXTERIOR DOOR
 - EXISTING DOORWAY TO BE REMOVED
 - REMOVE EXISTING PORCH AND STEPS
 - NEW WINDOW (TYP)
 - NEW DOWNSPOUT
 - AWNING
 - NEW STAIR HANDRAIL



1 NORTH ELEVATION
SCALE: 1/8" = 1'-0"



2 EAST ELEVATION
SCALE: 1/8" = 1'-0"

Bild Architecture
 PO Box 8235
 Portland, ME 04104
 207.408.0168
 evan@bildarchitecture.com

EVAN A. CARROLL
 LICENSED ARCHITECT
 2-22-2017
 No. 3687
 STATE OF MAINE

PROJECT NO. **16035**
 PROJECT NAME **44 QUEBEC**
 PORTLAND, ME

PERMITTING DRAWINGS

REVISIONS	DATE	BY
1	07.18.2017	EMW
2	07.27.2017	
3		
4		
5		

DRAWN BY **EMW**
 SHEET TITLE **ELEVATIONS**

ISSUE DATE **2.22.17**
 SHEET SCALE **1/4" = 1'-0"**