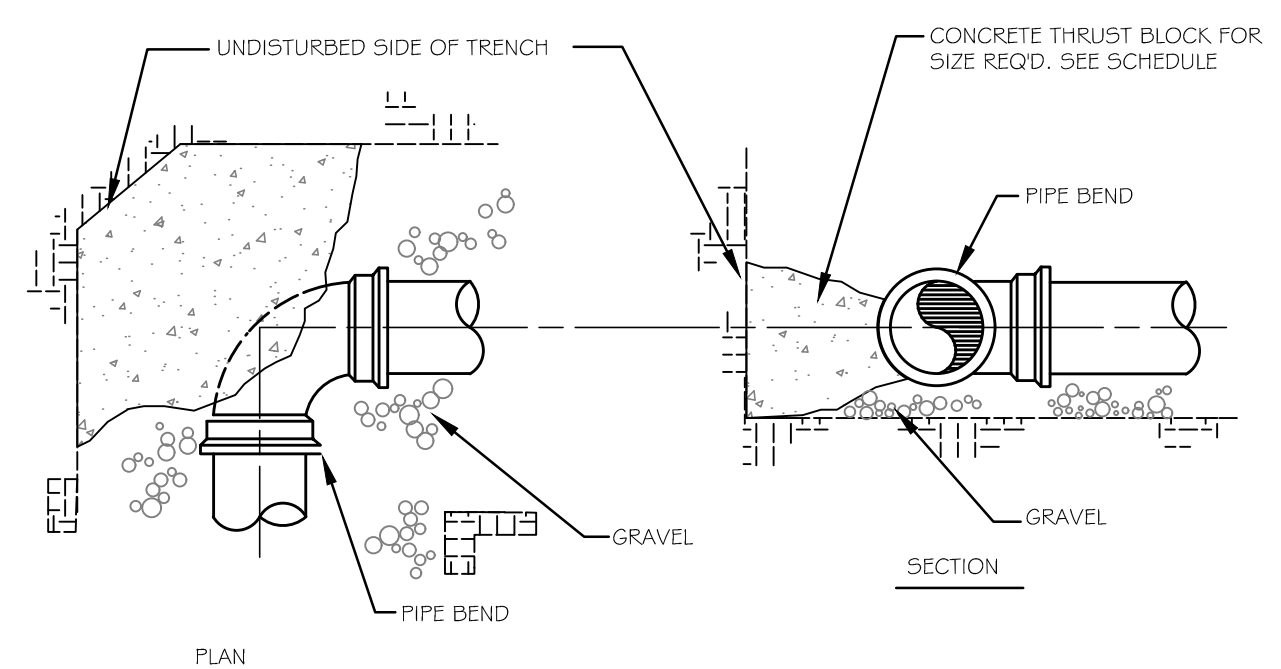


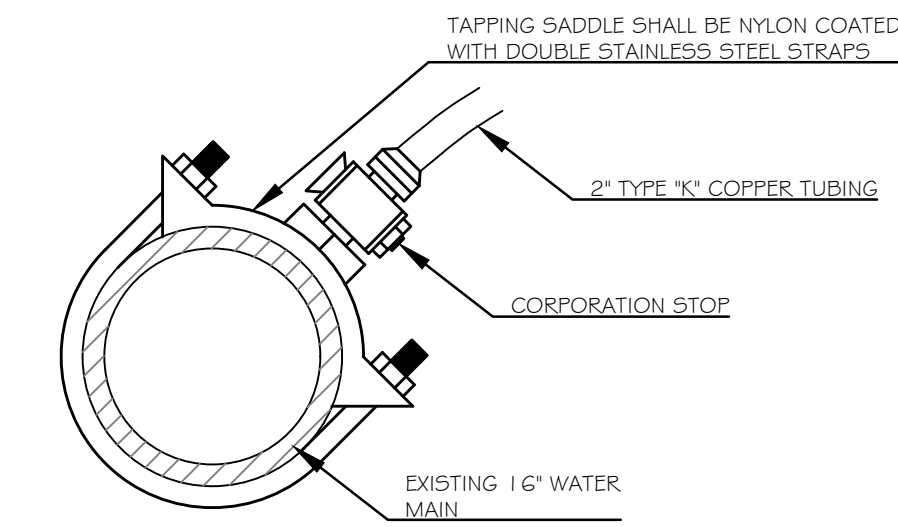
THRUST BLOCK PLACEMENT AT TEE(S)



THRUST BLOCK PLACEMENT AT BEND(S)

SIZE REQUIREMENTS FOR CONCRETE THRUST BLOCKS					
BEARING ON UNDISTURBED SOIL (SQUARE FT.)					
FITTINGS	90° BENDS	45° BENDS	TEES & FLUGS	HYDRANTS	
4"	2.0	1.0	1.0	N/A	
6"	3.0	2.0	2.0	6.0	
8"	5.0	3.0	4.0	N/A	

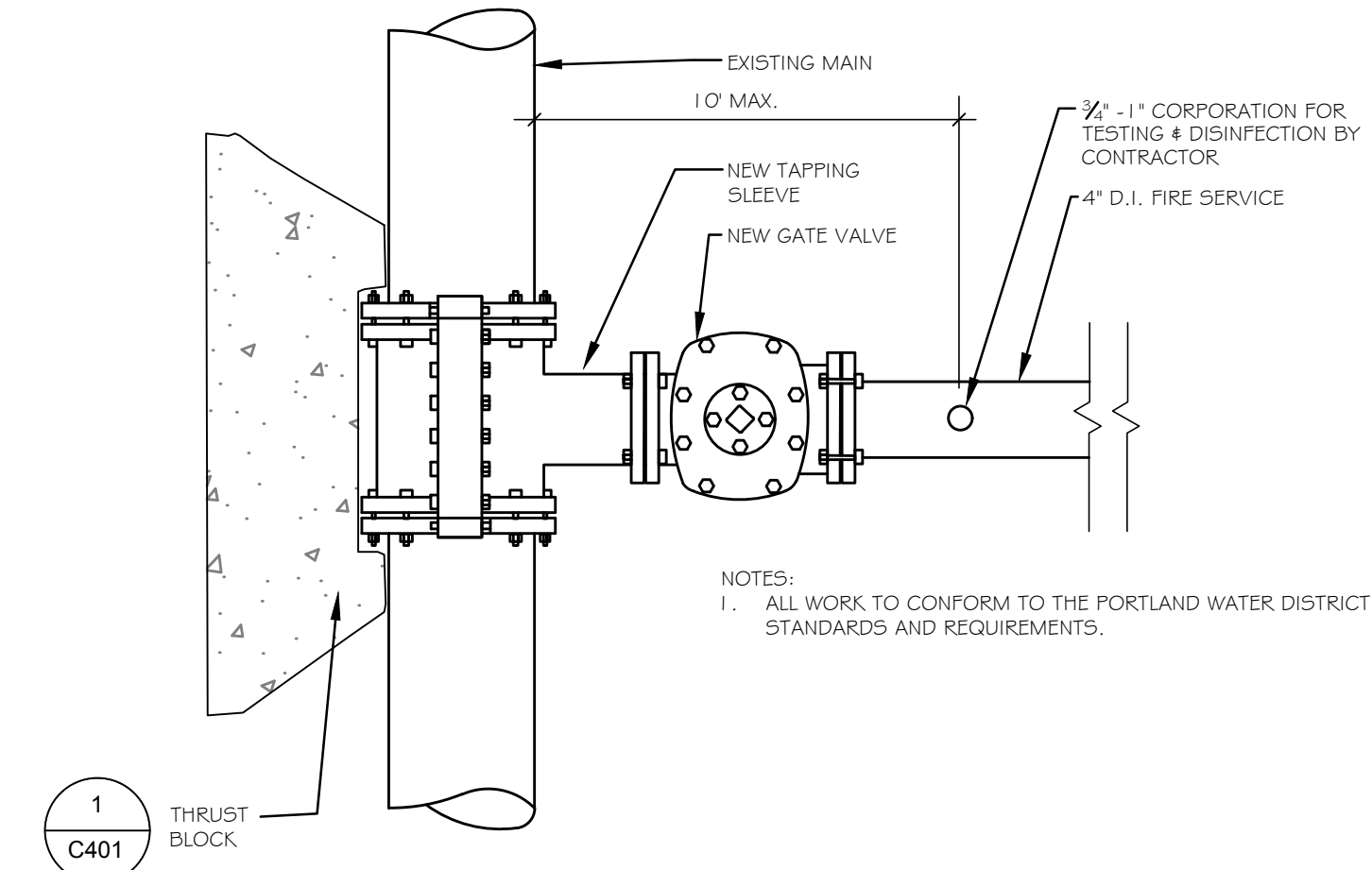
THRUST BLOCK SCHEDULE



NOTES:
ALL WORK TO CONFORM TO THE PORTLAND WATER DISTRICT STANDARDS AND REQUIREMENTS.

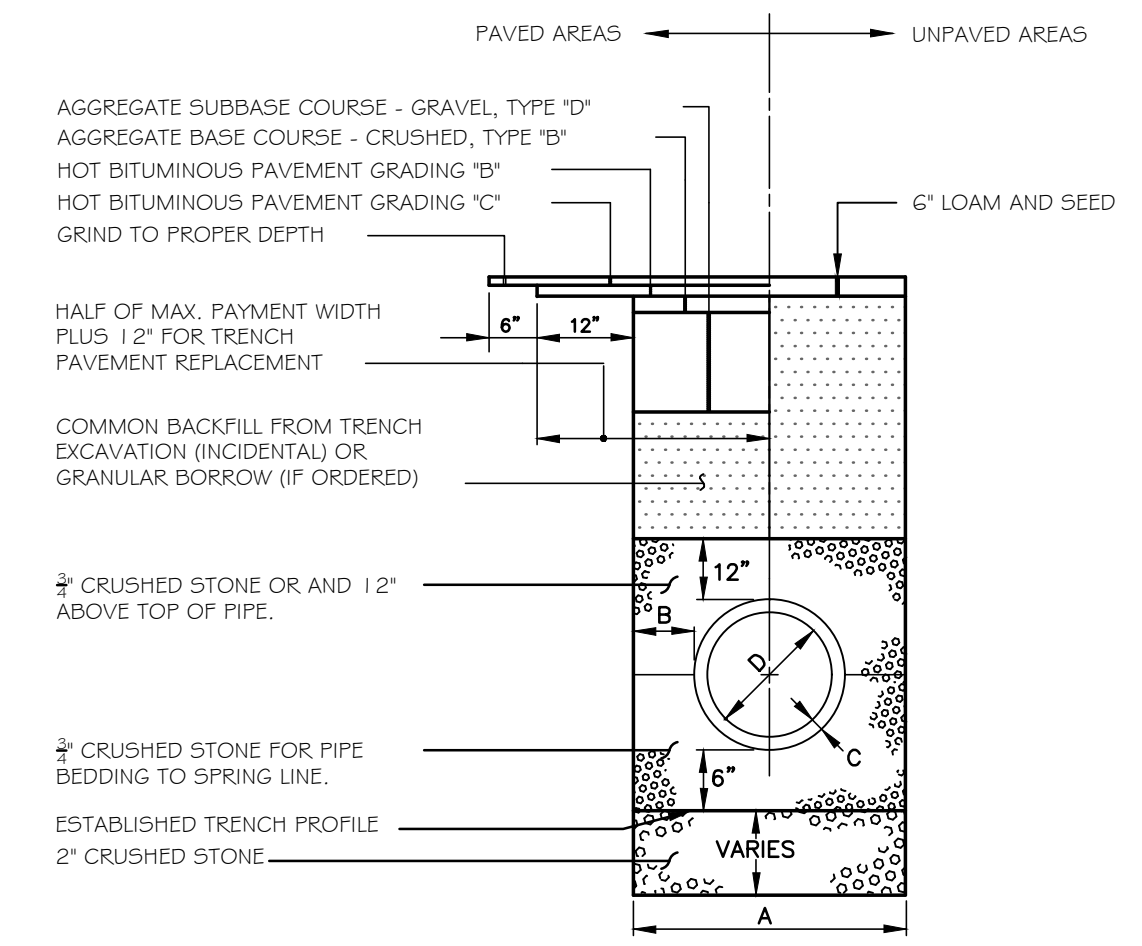
2 STANDARD CORPORATION STOP DETAIL
C401 NOT TO SCALE

1 THRUST BLOCK DETAILS
C401 NOT TO SCALE

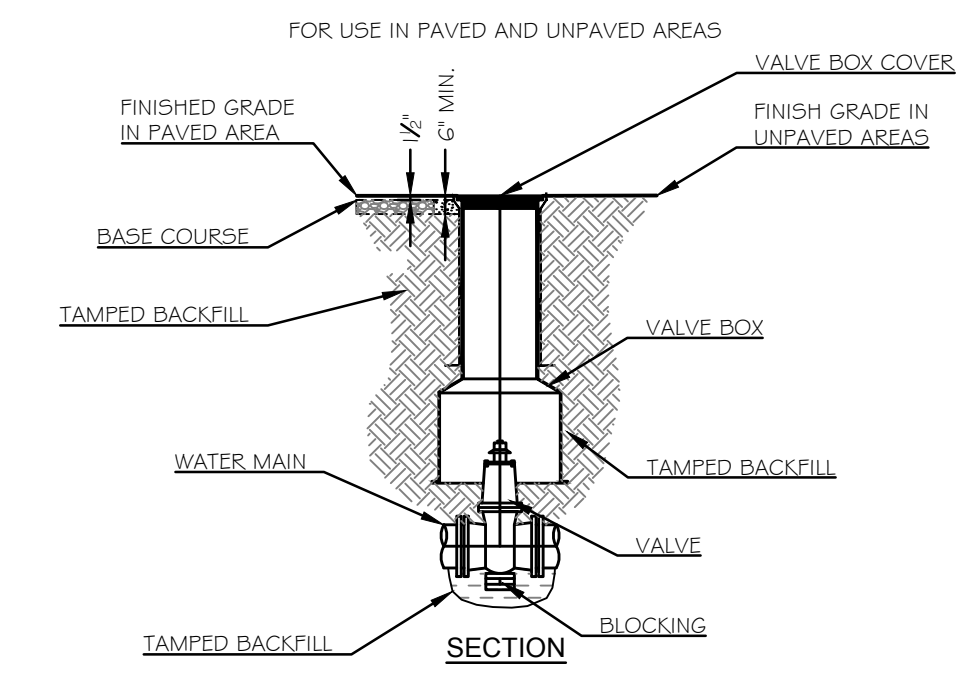


3 STANDARD TAPPING SLEEVE DETAIL (ALTERNATE #1)
C401

NOTES:
DEPTH OF BITUMINOUS PAVEMENT AND AGGREGATE COURSES SHALL BE DETERMINED BY STREET CLASSIFICATION.
ANY ALTERNATE TRENCHING OR PAYMENT METHODS SHALL BE APPROVED IN ADVANCE BY THE CITY OF PORTLAND, DEPARTMENT OF PUBLIC SERVICES.

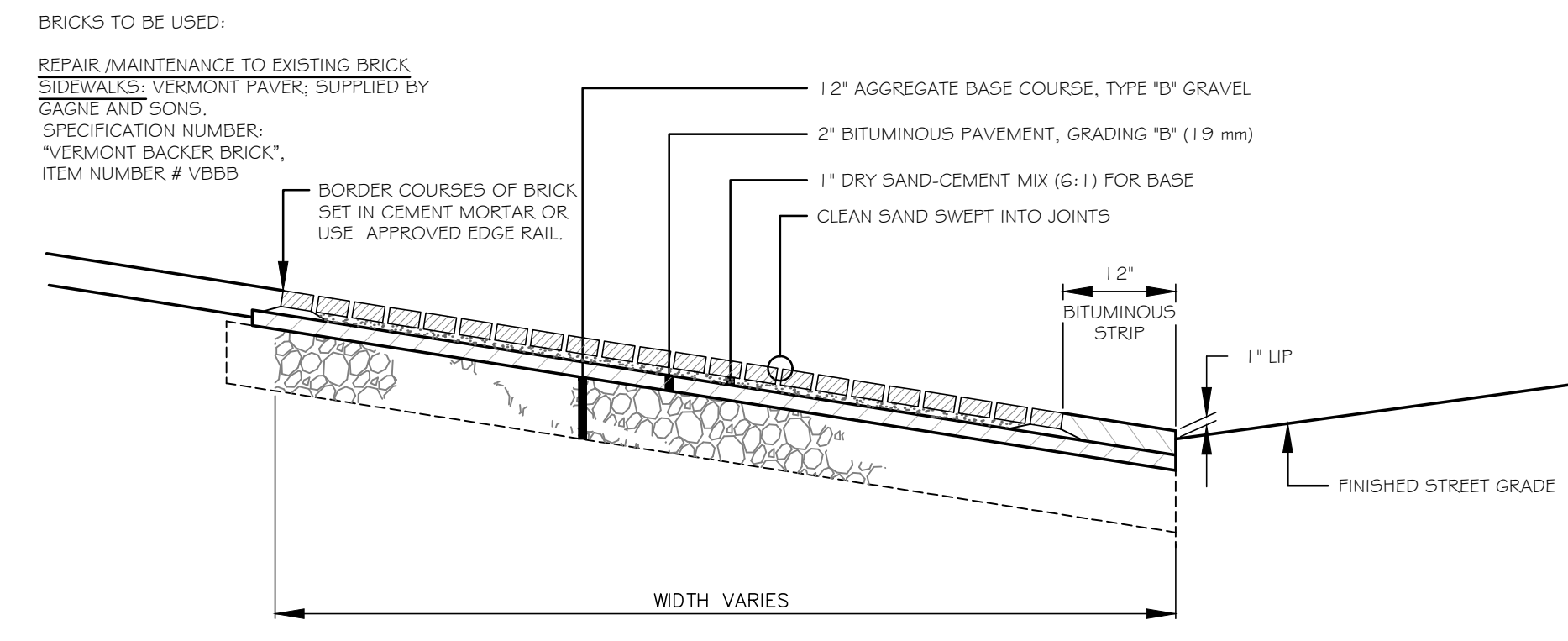


4 TYPICAL PIPE TRENCH & ROAD REPAIR DETAIL
C401 NOT TO SCALE

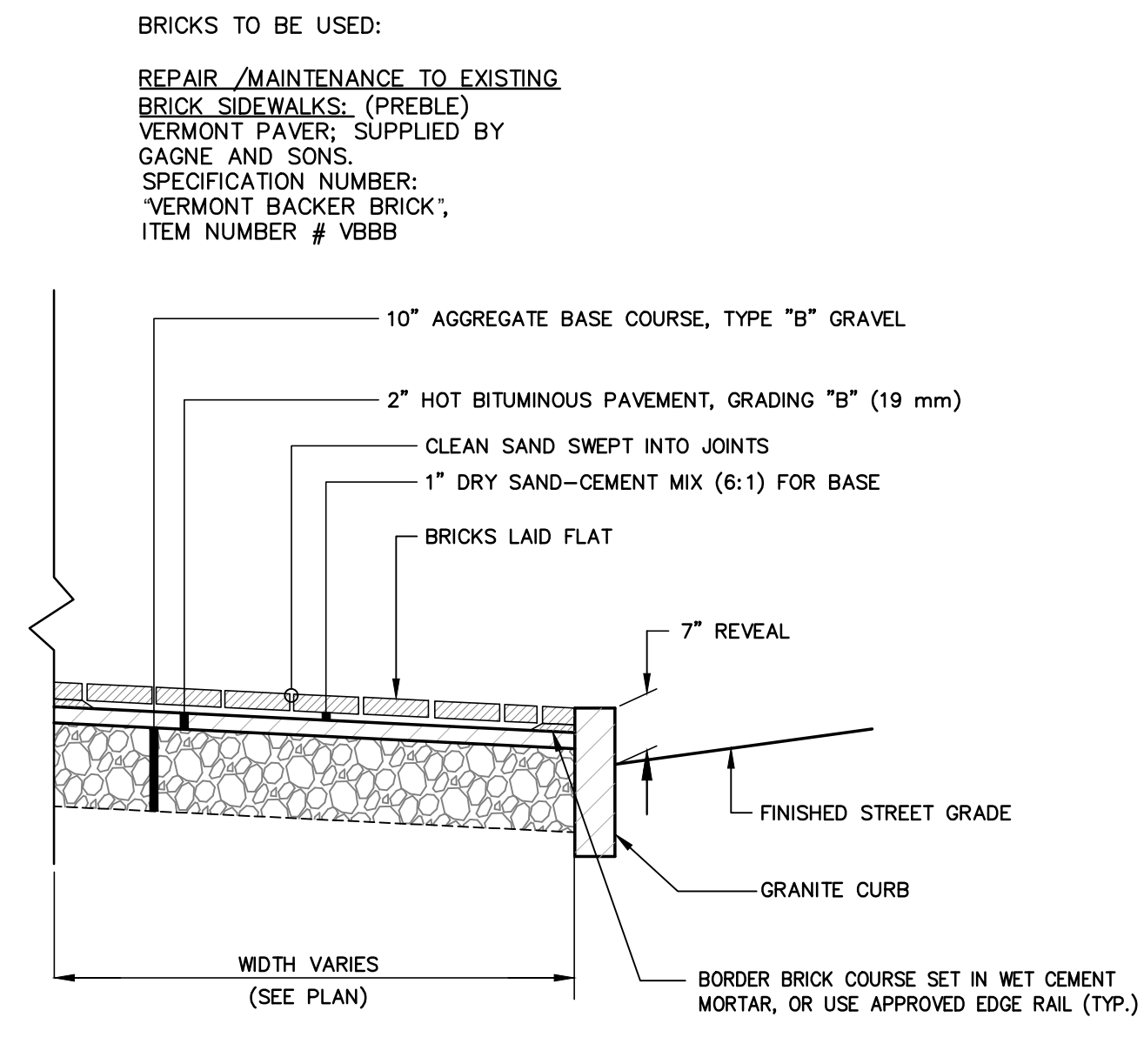


NOTES:
1. ALL WORK TO CONFORM TO THE MAINE WATER COMPANY STANDARDS AND REQUIREMENTS.
2. D.I.P. MAY BE USED FOR VALVE BOX EXTENSIONS.
3. VALVE BOX SHOULD NOT CONTACT WATER MAIN OR VALVE.
4. CONCRETE PROTECTOR RING SHALL BE USED IN ALL UNPAVED AREAS.

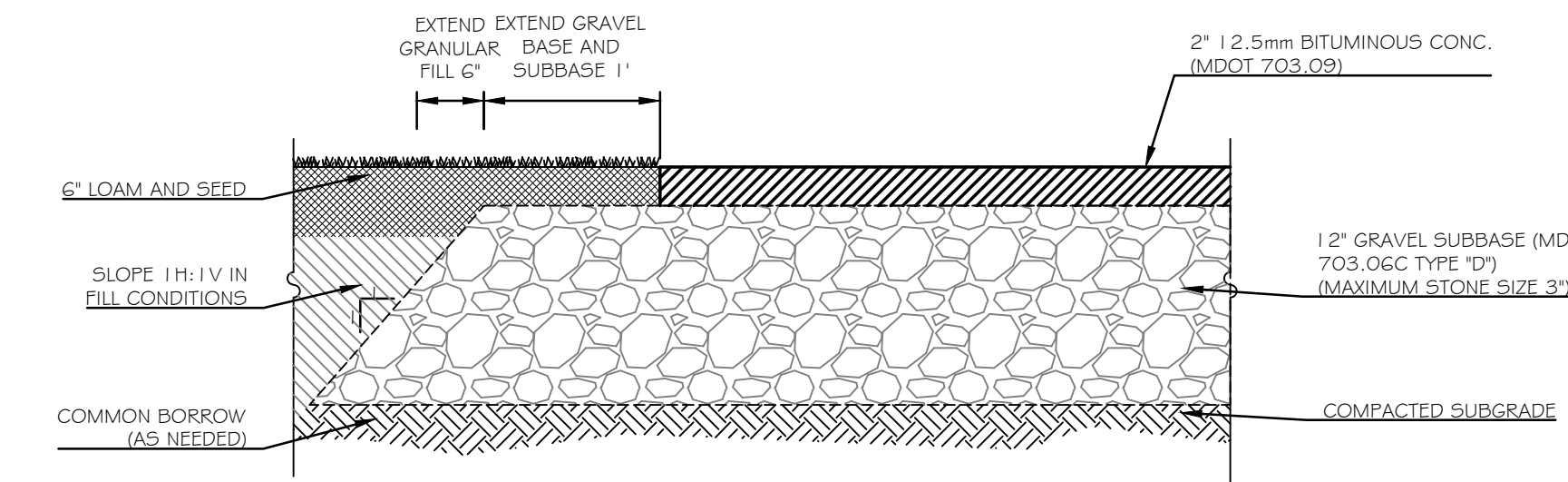
5 VALVE AND VALVE BOX INSTALLATION DETAIL
C401 NOT TO SCALE



6 BRICK DRIVEWAY APRON WITH BITUMINOUS BASE
C401 NOT TO SCALE



7 BRICK SIDEWALK WITH BITUMINOUS BASE
C401 NOT TO SCALE



8 PAVED SIDEWALK SECTION
C401 NOT TO SCALE

BRICKS TO BE USED:
REPAIR /MAINTENANCE TO EXISTING BRICK SIDEWALKS: (PREBLE) VERMONT PAVER; SUPPLIED BY GAGNE AND SONS.
SPECIFICATION NUMBER: "VERMONT BACKER BRICK", ITEM NUMBER # VBBD