

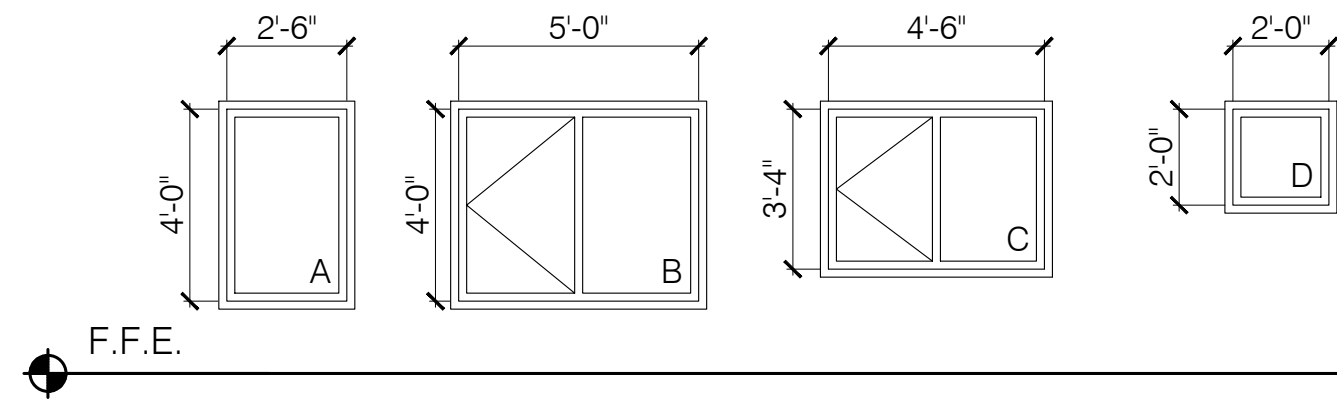
WINDOW SCHEDULE				
TYPE	SIZE (ROUGH OPENING)	MATERIAL	OPERATION	NOTES
A	4'-0" X 2'-6"	-	CASEMENT OR FIXED	1,2,3,4,5
B	4'-0" X 5'-0"	-	CASEMENT/FIXED	1,2,3,4,5
C	3'-4" X 4'-6"	-	CASEMENT/FIXED	2,4,5
D	2'-0" X 2'-0"	-	FIXED	2,4,5

**WINDOW SCHEDULE NOTES:**

- SAFETY GLAZING DENOTED BY (T) SHOWN ON BLDG. ELEVATIONS
- ALL WINDOWS TO HAVE A MAXIMUM U-FACTOR OF 0.35
- WINDOWS LABELED "EGRESS WINDOW" IN PLAN MUST COMPLY WITH: MIN AREA: 5.7SF  
MIN HEIGHT: 24"  
MIN WIDTH: 20"
- WINDOWS TO BE THERMALLY BROKEN
- SEE ELEVATIONS FOR OPERATION

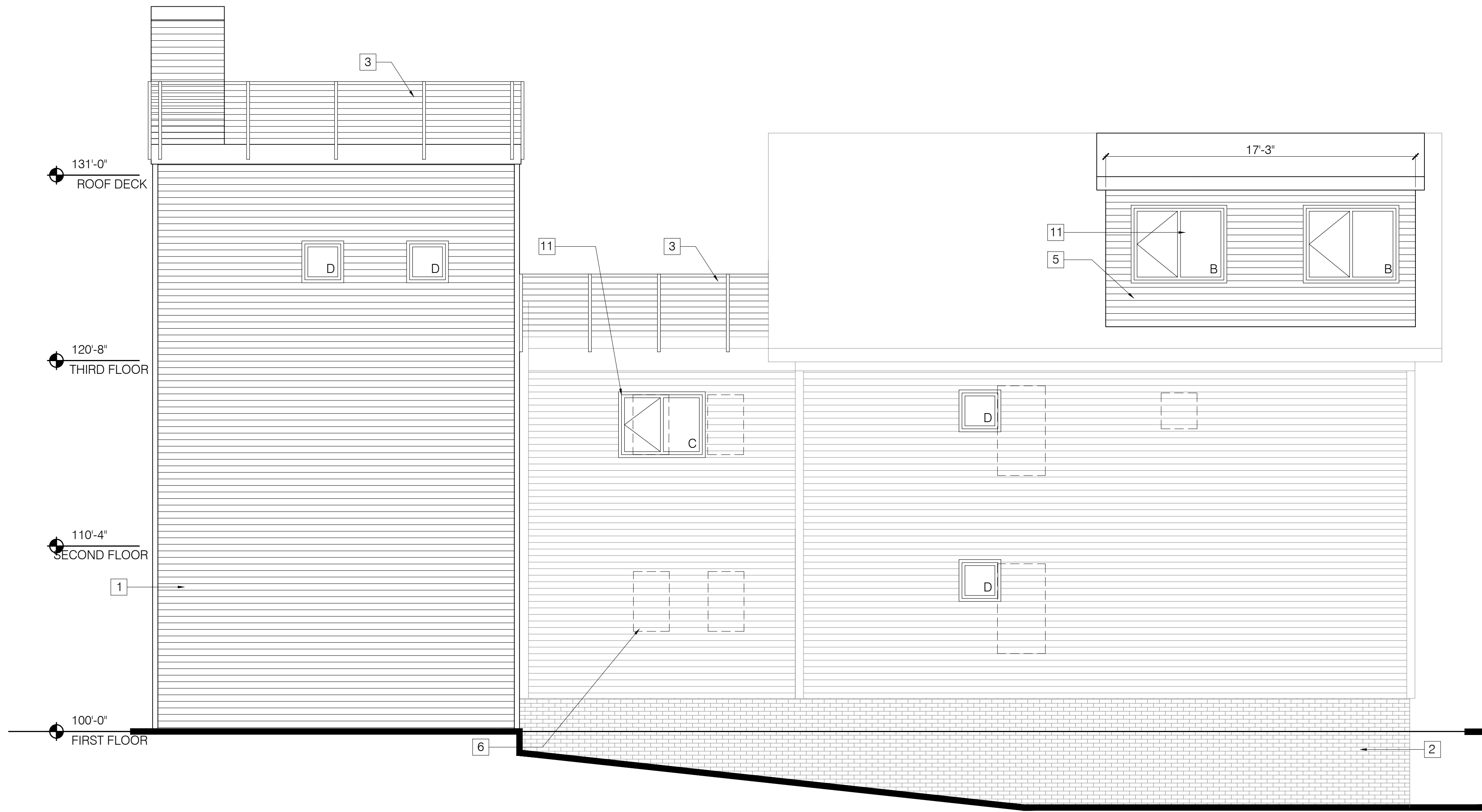
**WINDOW SPECIFICATIONS:**

- |                                       |                                 |
|---------------------------------------|---------------------------------|
| 1. Size and window configuration.     | See Window Schedule             |
| 2. Color options.                     | To be selected                  |
| 3. Factory Mulling Capability.        | Preferred                       |
| 4. Design Pressure Rating             | 25                              |
| 5. U Factor                           | 0.35 or lower                   |
| 6. Material                           | To be selected                  |
| 7. Glazing Type                       | To be selected                  |
| 8. Hardware type.                     | To be selected                  |
| 9. Exterior Washing Capability        | Washing from interior preferred |
| 10. Warranty (Window & glazing units) | 10 years                        |
| 11. Insect Screens                    | Standard Insect Screens         |

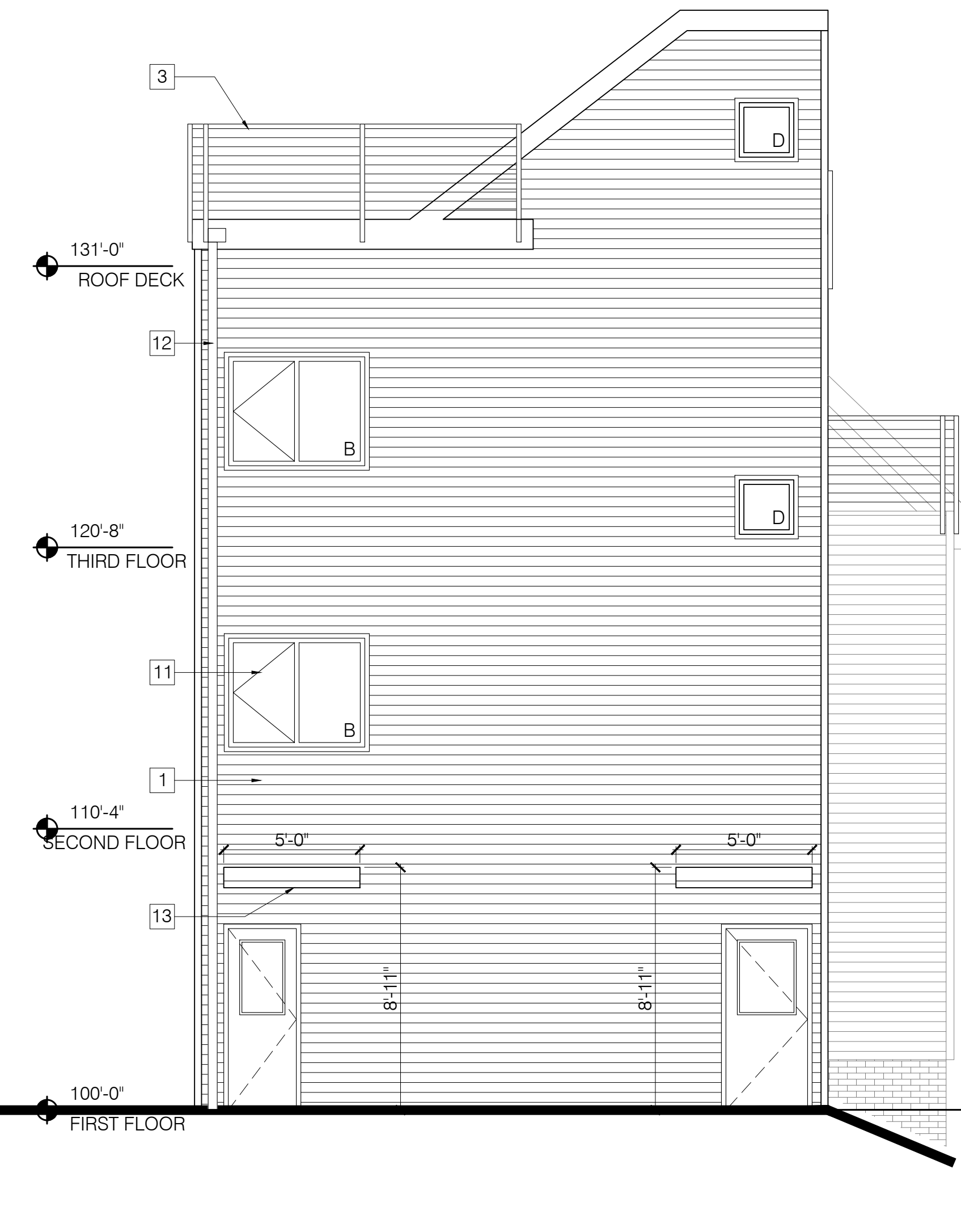


WINDOW A	WINDOW B	WINDOW C	WINDOW D
10 SF	20 SF	15 SF	4 SF

- KEYNOTES:**
- NEW CLAPBOARD SIDING
  - EXISTING BRICK
  - FABRICATED METAL GUARD SYSTEM
  - NEW ADDITION TO EXISTING DORMER
  - NEW DORMER
  - EXISTING WINDOW TO BE REMOVED (TYP)
  - NEW EXTERIOR ENTRANCE
  - NEW EXTERIOR DOOR
  - EXISTING DOORWAY TO BE REMOVED
  - REMOVE EXISTING PORCH AND STEPS
  - NEW WINDOW (TYP)
  - NEW DOWNSPOUT
  - AWNING
  - NEW STAIR HANDRAIL



1 NORTH ELEVATION  
SCALE: 1/8" = 1'-0"



2 EAST ELEVATION  
SCALE: 1/8" = 1'-0"