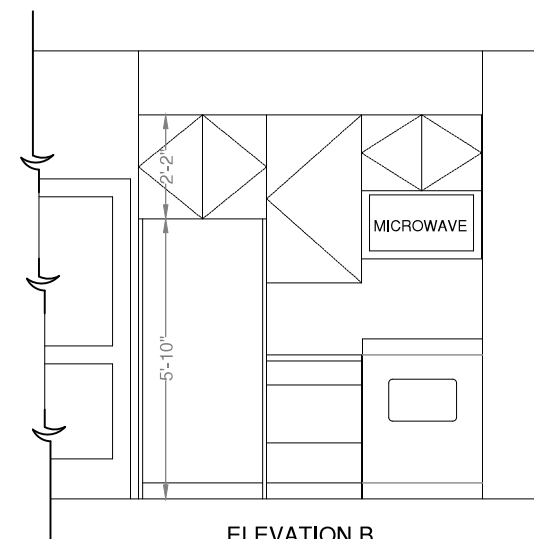


ELEVATION A



ELEVATION B

NOTES

- 1) Cabinet Interiors are 3/4" Maple vc walls w 1/2" Maple vc backs.
- 2) Cabinet exterior walls, doors & drawer fronts are 3/4" Oak vc.
- 3) Doors are hung with concealed, self closing, overlay hinges
- 4) Drawers mounted with full-extension ball bearing slides by Accuride or similar.
- 5) Refridgerator has 3/4" Oak surround
- 6) Finish: exterior is Minwax Sedona Red w M.L. Campbell satin finish. Interior is clear prefinish.
- 7) Sink: white porcelain, double bowl by c Kohler or similar.