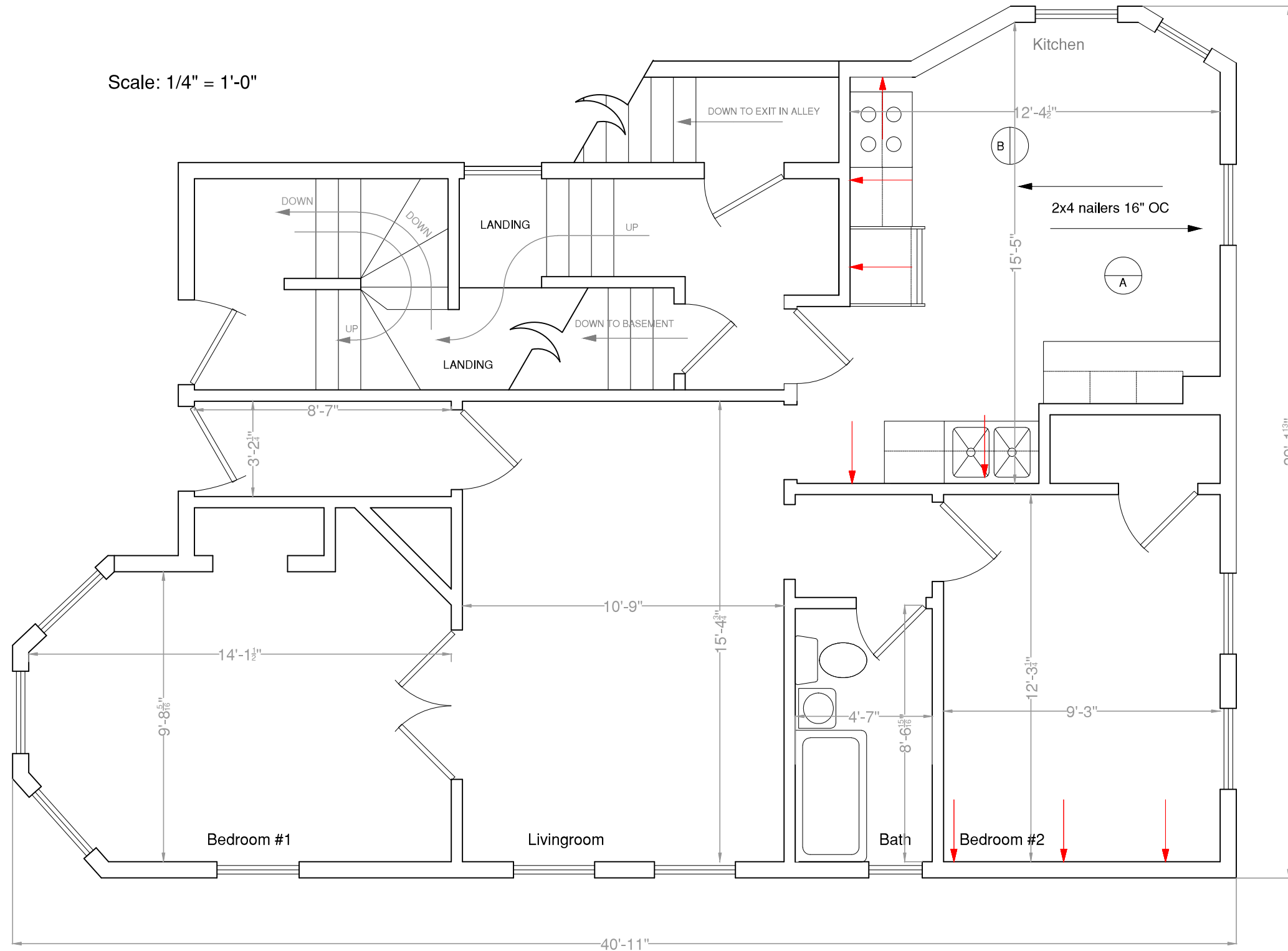


Scale: 1/4" = 1'-0"



SCOPE OF WORK

- 1) Work is limited to interior of 6 Howard St. 1st floor (Hallways and stair cases outside unit NIC)
- 2) Remove exis kitchen cabinets , disconnect existing appliances.
- 3) Install new cabinets as per plan @ elevations.
- 4) Install new Corrian (or similar) countertops.
- 5) Refinish kitchen floor
- 6) Remove Plaster from walls and ceiling where indicated on plan (red arrows). Replace w 5/8" GWB.
- 7) Existing walls are 2x4's , 16" OC and remain in same configuration.
- 8) Replace all "knob and tube" wiring with romex wire.
- 9) New 2x4 GWB nailers on Kitchen ceiling shall be 16" OC in direction indicated on plan by arrows.

