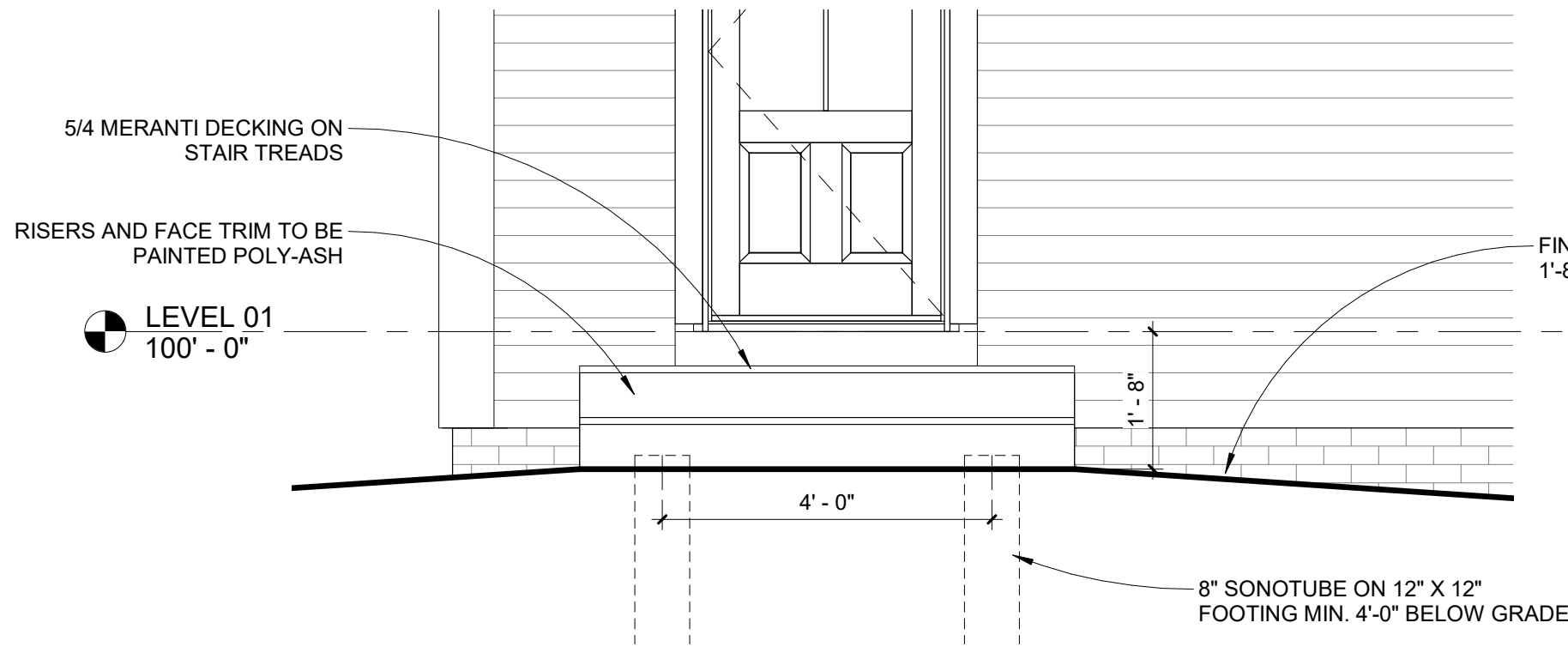


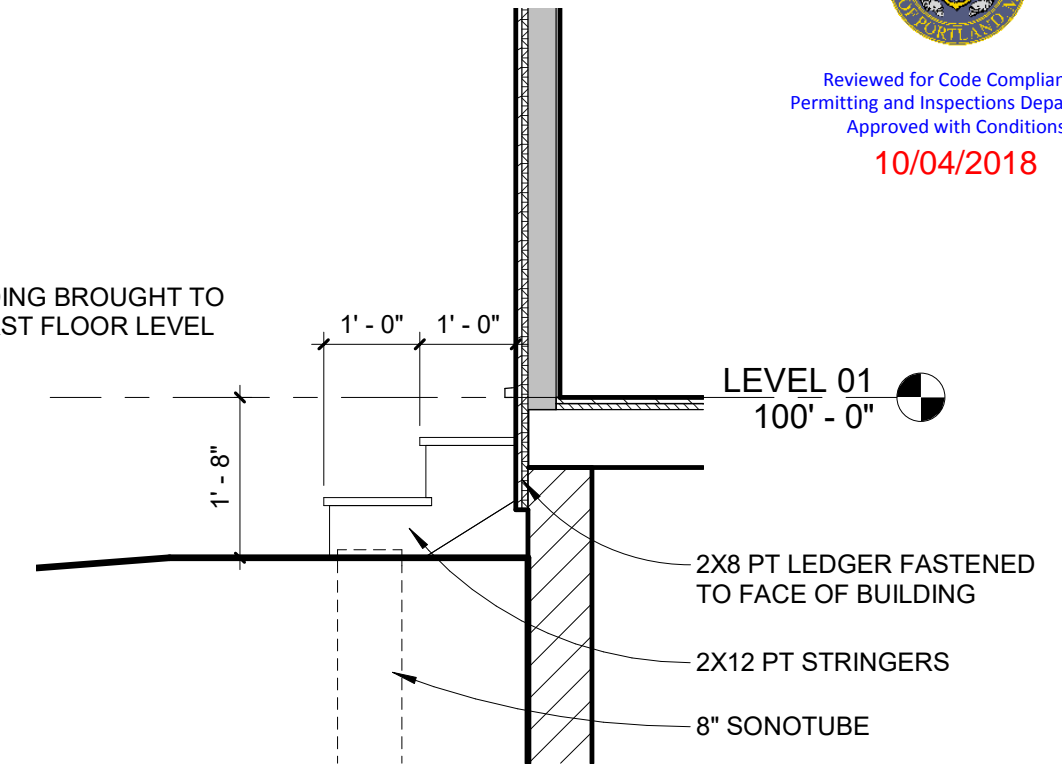


Reviewed for Code Compliance  
Permitting and Inspections Department  
Approved with Conditions

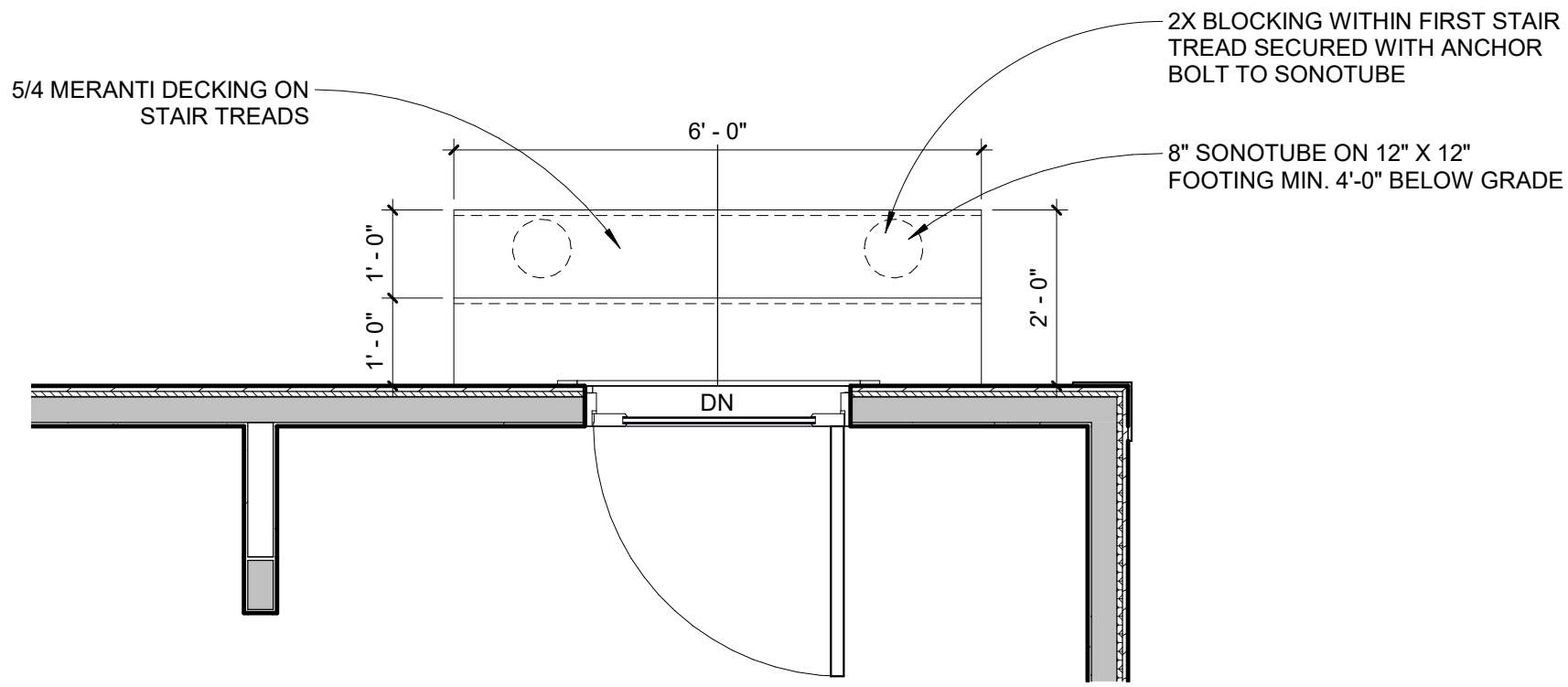
10/04/2018



2 BACK STEP ELEVATION  
1/2" = 1'-0"



3 BACK STEP SIDE ELEVATION  
1/2" = 1'-0"

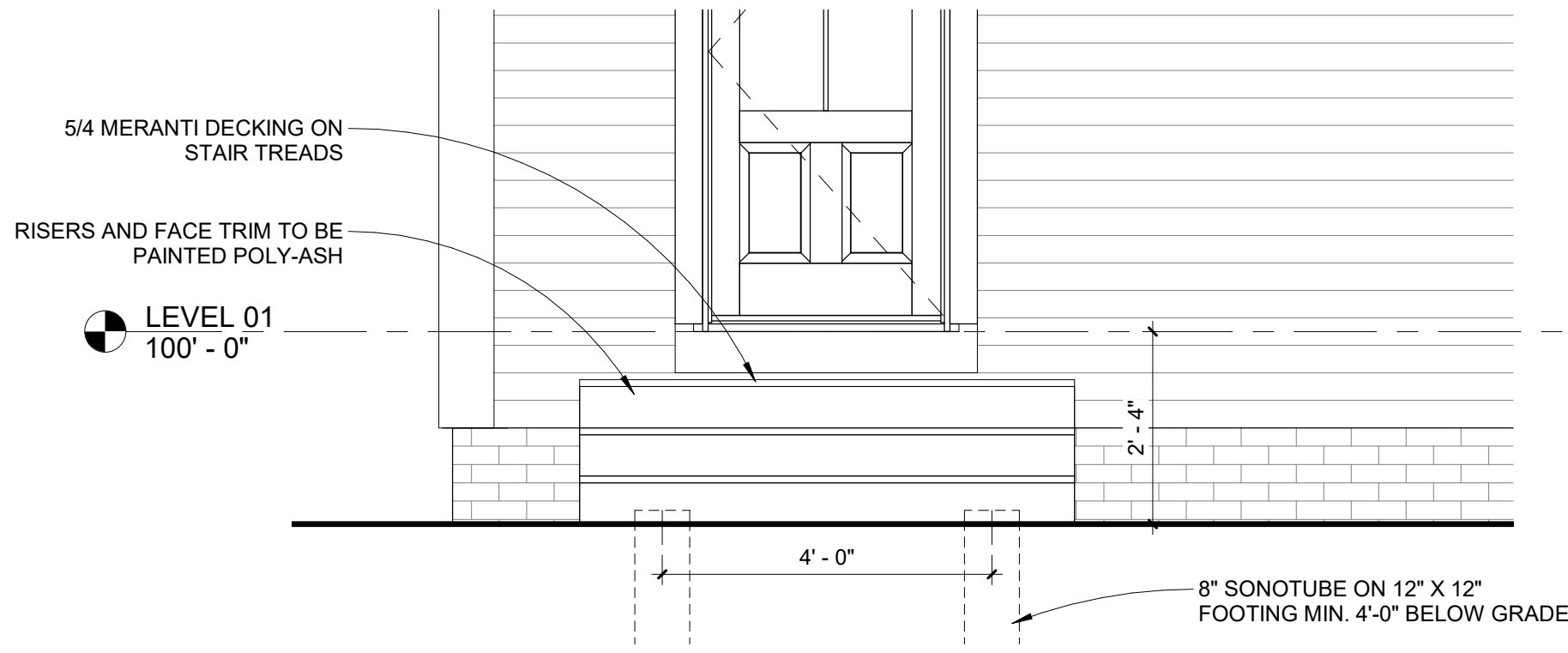


1 BACK STEP PLAN  
1/2" = 1'-0"

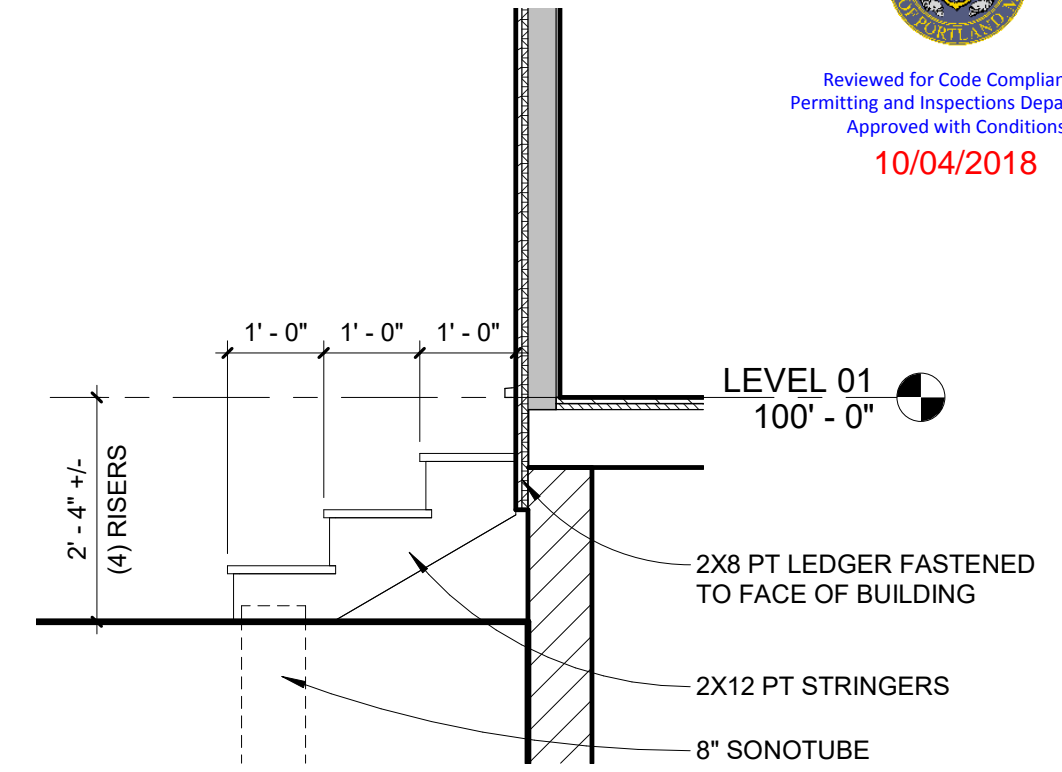
<b>ELLA HOUSING - 79 CONGRESS PORTLAND, ME</b>		<b>B-SK-04</b>
<b>TITLE:</b> BACK STEP DETAILS	<b>ISSUED:</b> 10/03/2018	<b>BRIBURN</b> architecture for life 28 Maple St.   Portland, ME   207-774-8482
<b>REFERENCE:</b>	<b>PROJECT No:</b> 1706	
	<b>DRAWN BY:</b> RIP	



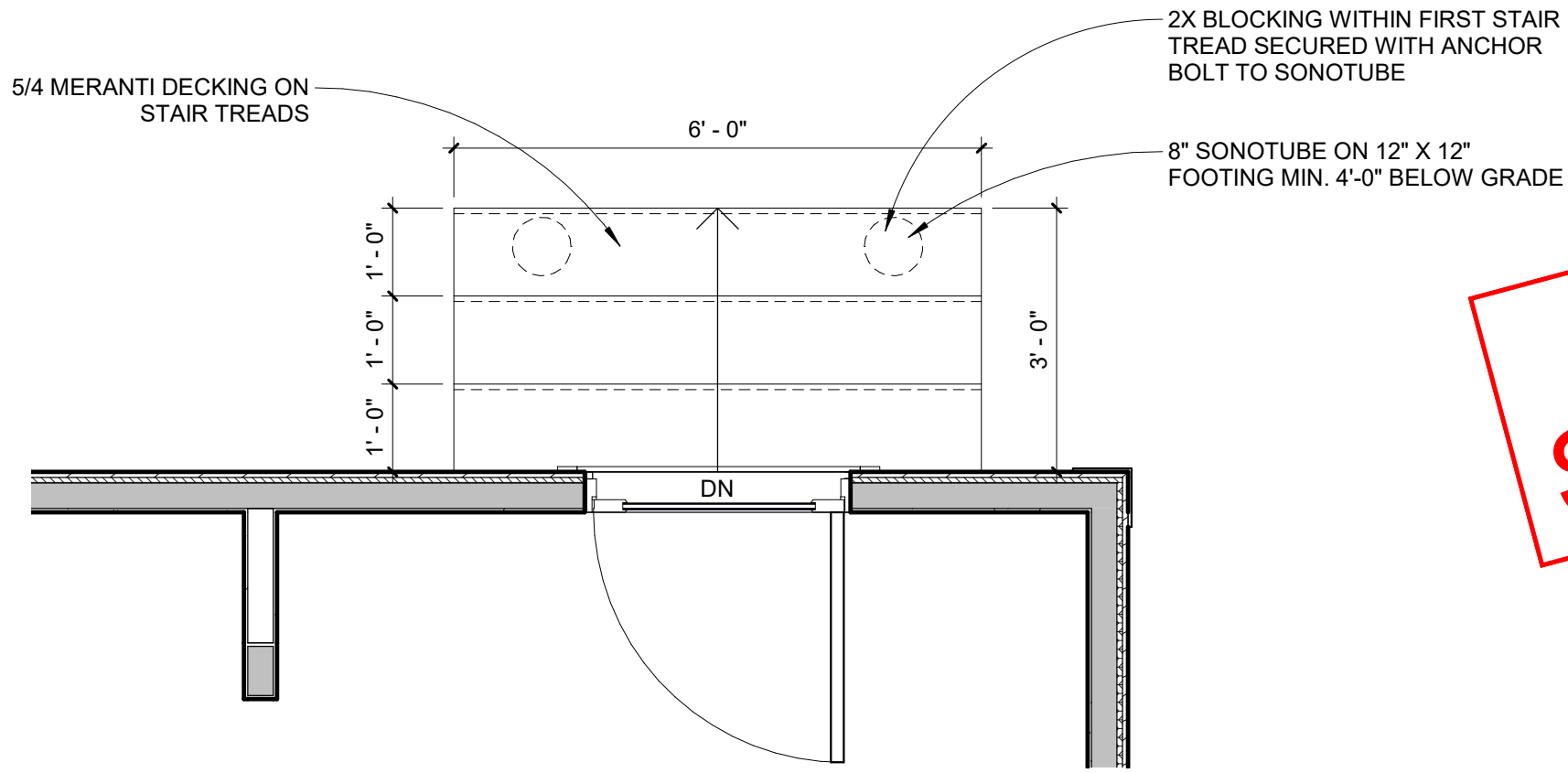
Reviewed for Code Compliance  
 Permitting and Inspections Department  
 Approved with Conditions  
 10/04/2018



2 BACK STEP ELEVATION  
 1/2" = 1'-0"



3 BACK STEP SIDE ELEVATION  
 1/2" = 1'-0"



1 BACK STEP PLAN  
 1/2" = 1'-0"

**REVISED  
 SEE B-SK-04**

<b>ELLA HOUSING - 79 CONGRESS PORTLAND, ME</b>		<b>B-SK-03</b>
<b>TITLE:</b> BACK STEP DETAILS	<b>ISSUED:</b> 9/20/2018	<b>BRIBURN</b> architecture for life 28 Maple St.   Portland, ME   207-774-8482
<b>REFERENCE:</b>	<b>PROJECT No:</b> 1706	
	<b>DRAWN BY:</b> RIP	





LICENSED ARCHITECT  
 HARRY W. HEPBURN  
 No. 3316  
 STATE OF MAINE

**ELLA HOUSING - 79 CONGRESS**  
 79 CONGRESS ST, PORTLAND, ME  
 RENOVATIONS

**BRI BURN**  
 architecture for life  
 25 Maple St., Suite 202, Portland, ME 04101  
 207-774-6642

CONSULTANTS:

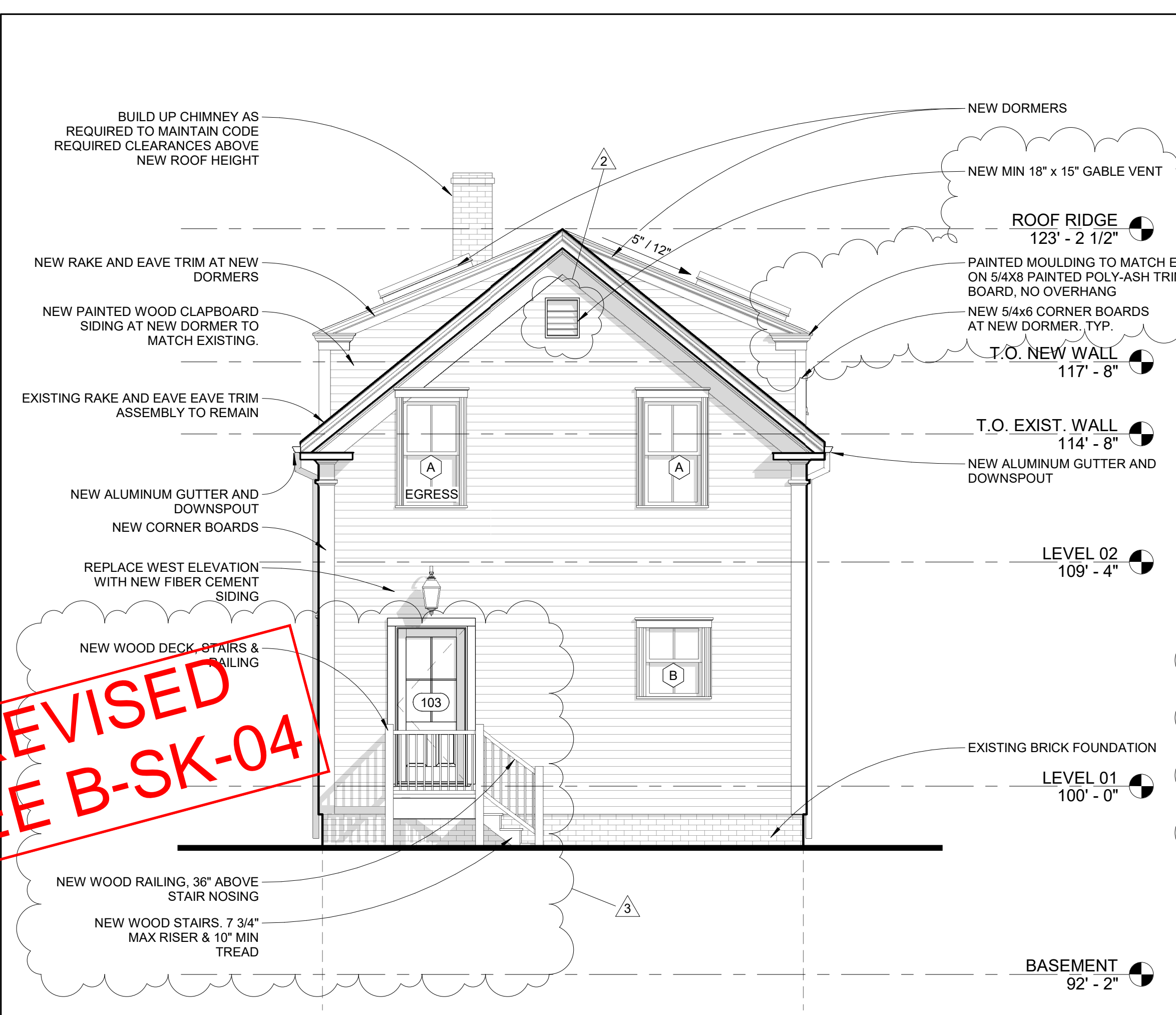
No.	Name	Date
1	REV 1	11/21/17
2	REV 2	11/28/17
3	REV 3	6/19/18

**ISSUED FOR CONSTRUCTION**

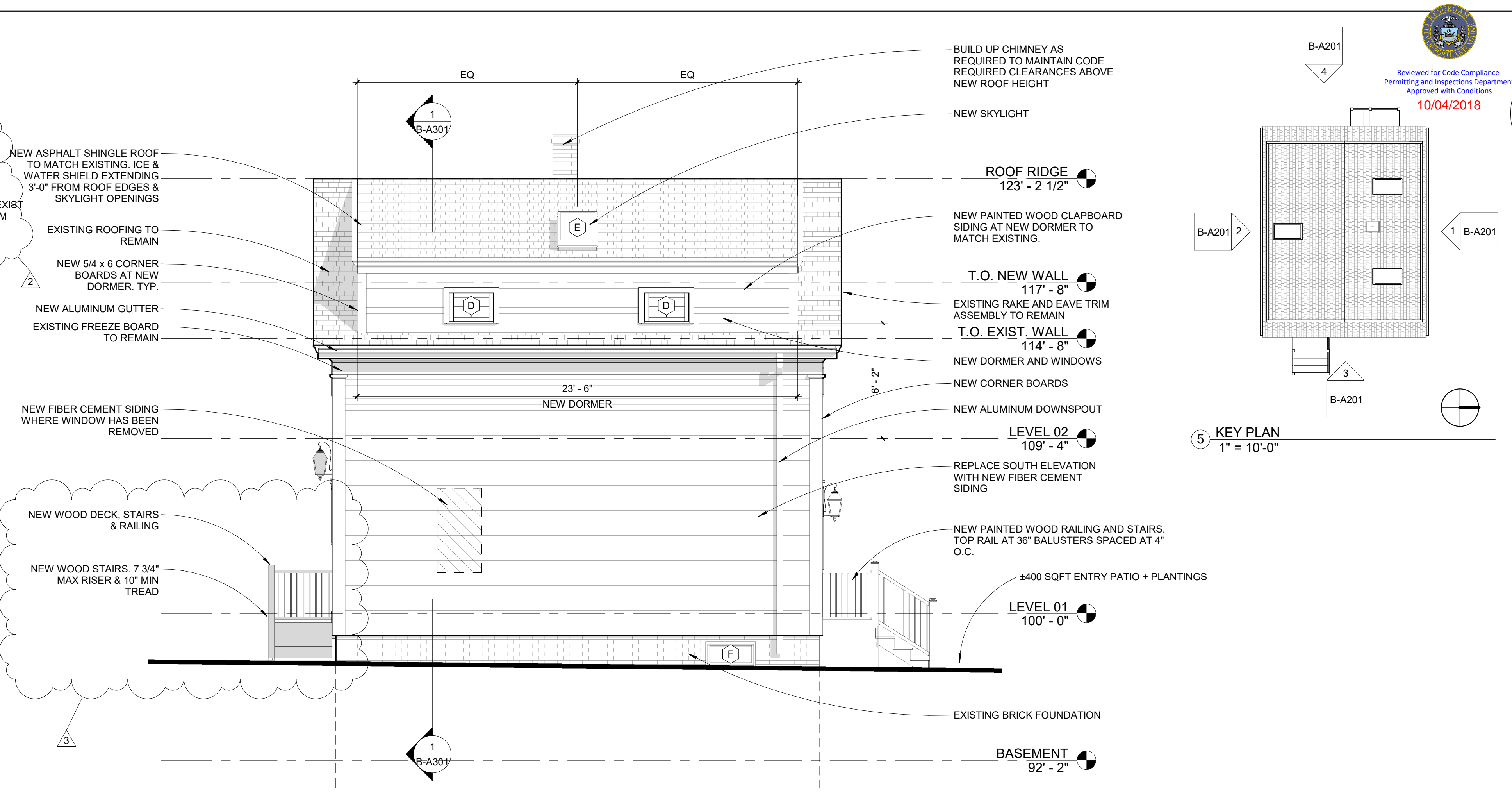
ISSUED: 10/13/2017  
 PROJECT No: 1706  
 DRAWN BY: LG  
 CHECKED BY: HH

SHEET TITLE:  
 EXTERIOR ELEVATIONS

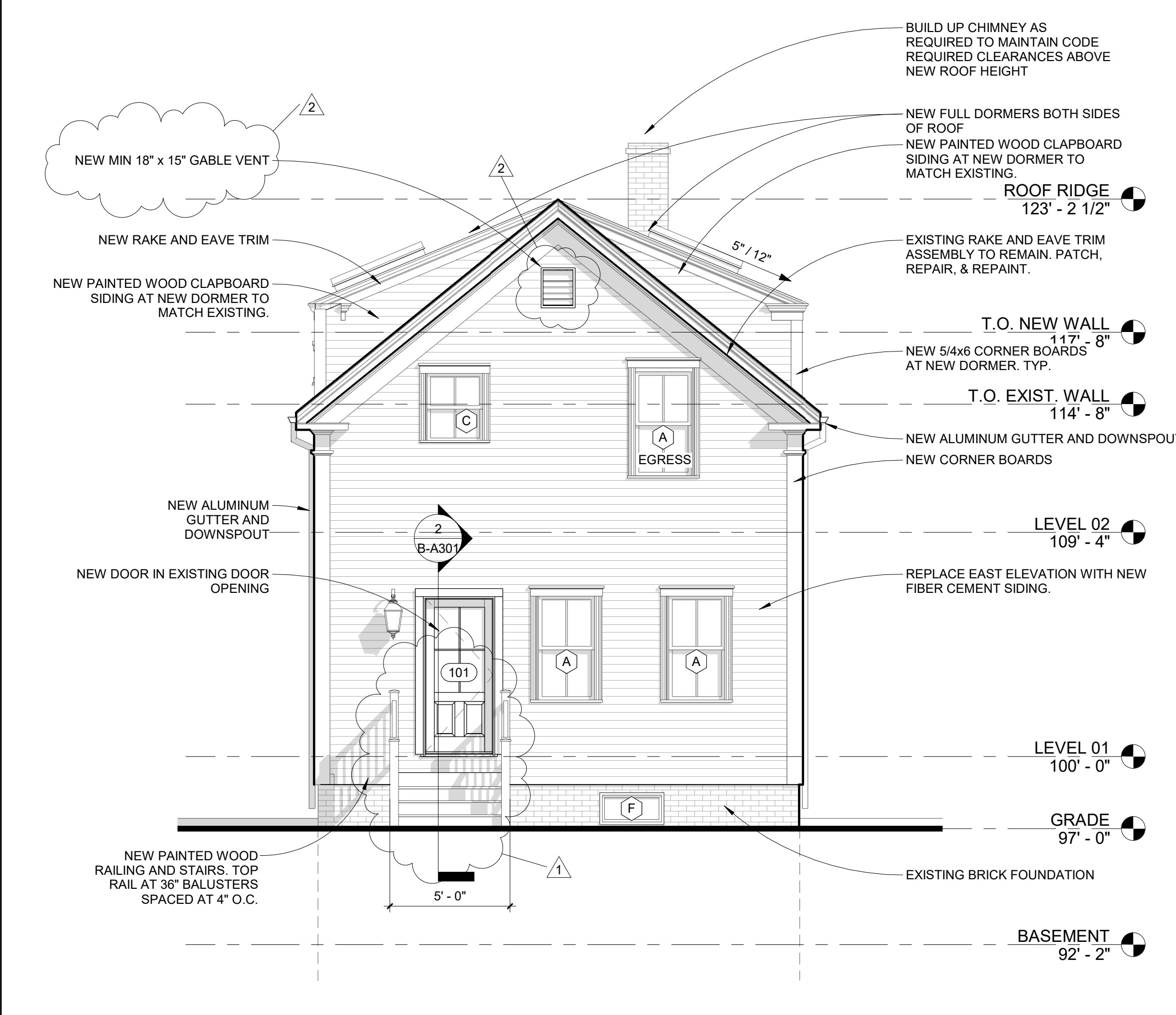
**B-A201**



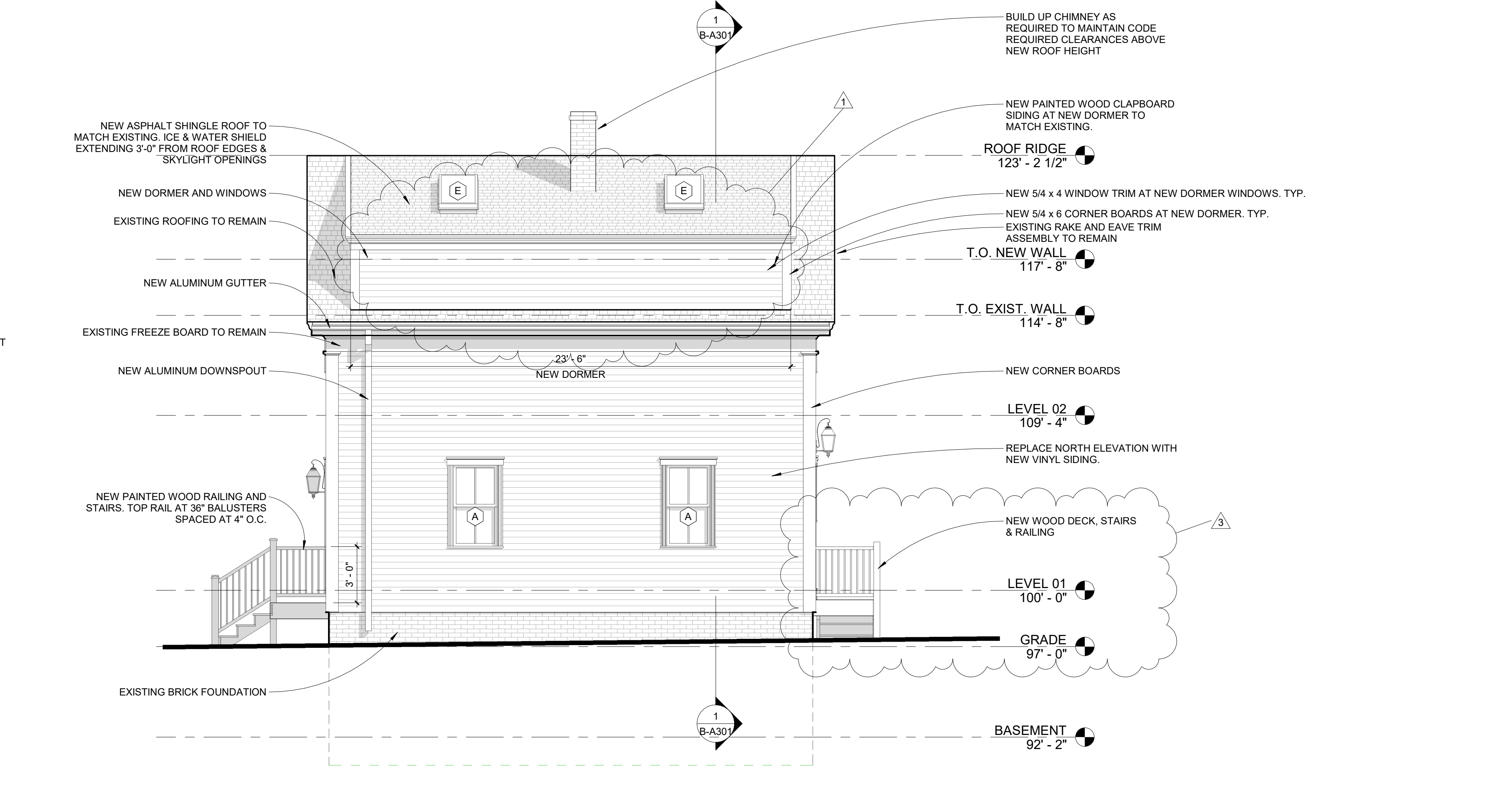
4 West Elevation  
 1/4" = 1'-0"



2 South Elevation  
 1/4" = 1'-0"



3 East Elevation  
 1/4" = 1'-0"



1 North Elevation  
 1/4" = 1'-0"

5 KEY PLAN  
 1" = 10'-0"

**REVISED**  
**SEE B-SK-04**