

**ELLA HOUSING - 79 CONGRESS**  
 79 CONGRESS ST, PORTLAND, ME  
 RENOVATIONS

**BRI BURN**  
 architecture for life  
 29 Maple St., Suite 202, Portland, ME 04101  
 207.774.6462

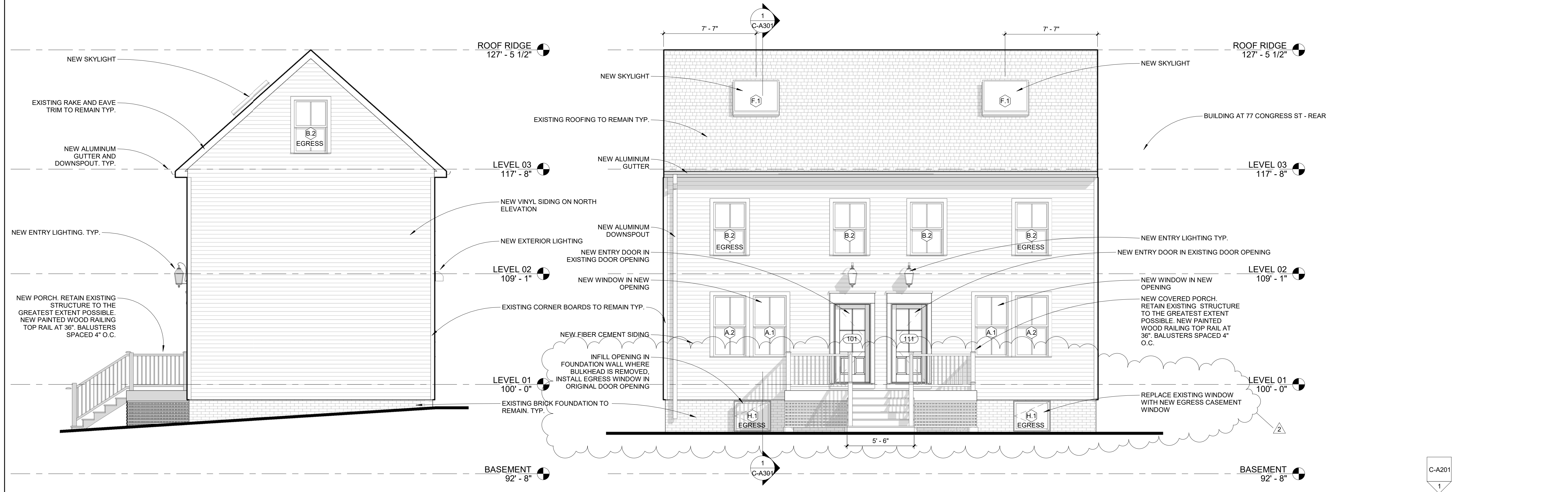
CONSULTANTS:

REVISIONS:

No.	Name	Date
1	REV 1	11/21/17
2	REV 2	12/5/17

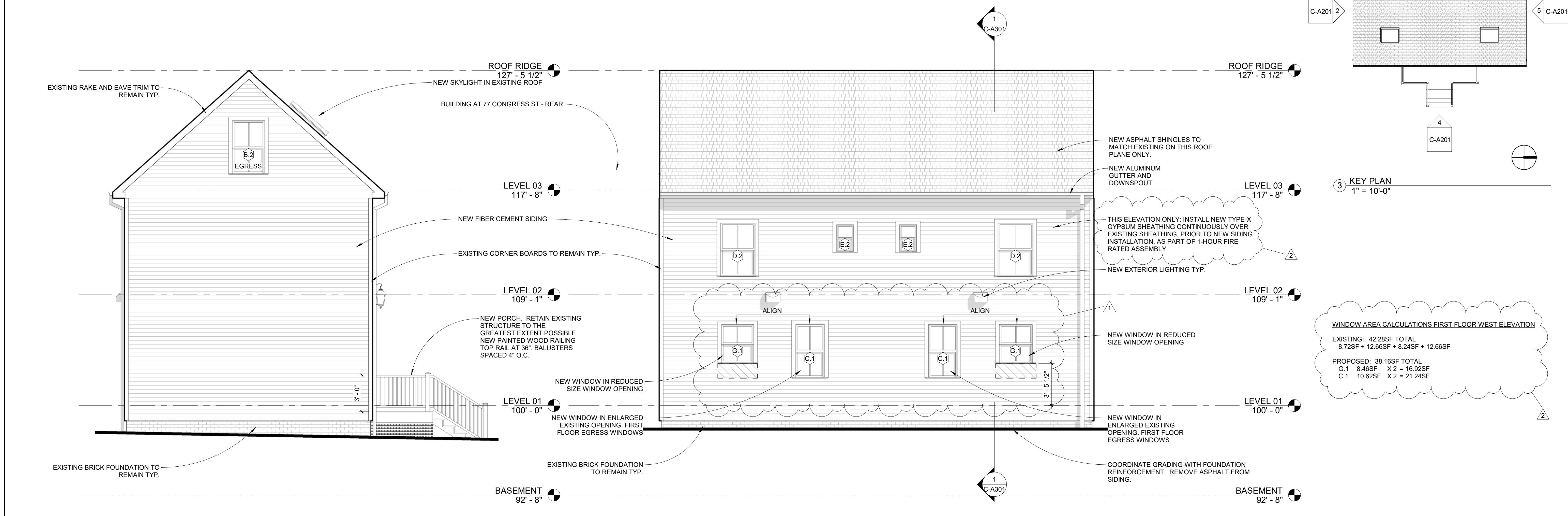
ISSUED FOR PERMITTING  
 ISSUED: 10/13/2017  
 PROJECT No: 1706  
 DRAWN BY: LG  
 CHECKED BY: HH  
 SHEET TITLE:  
 EXTERIOR ELEVATIONS

**C-A201**



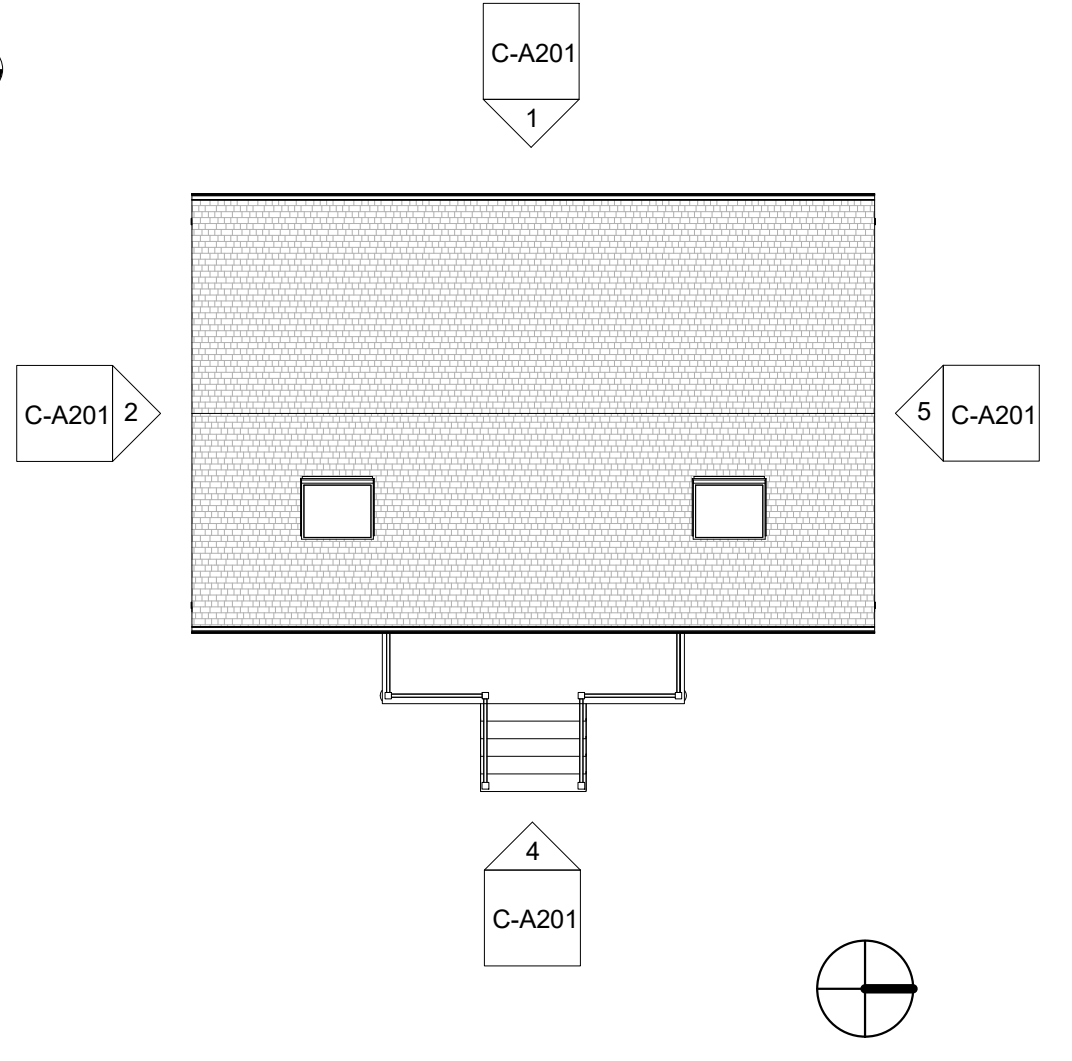
5 NORTH ELEVATION  
 1/4" = 1'-0"

4 EAST ELEVATION  
 1/4" = 1'-0"



2 SOUTH ELEVATION  
 1/4" = 1'-0"

1 WEST ELEVATION  
 1/4" = 1'-0"



3 KEY PLAN  
 1" = 10'-0"

WINDOW AREA CALCULATIONS FIRST FLOOR WEST ELEVATION  
 EXISTING: 42.28SF TOTAL  
 8.72SF + 12.66SF + 8.24SF + 12.66SF  
 PROPOSED: 38.16SF TOTAL  
 G.1 8.46SF X 2 = 16.92SF  
 C.1 10.62SF X 2 = 21.24SF