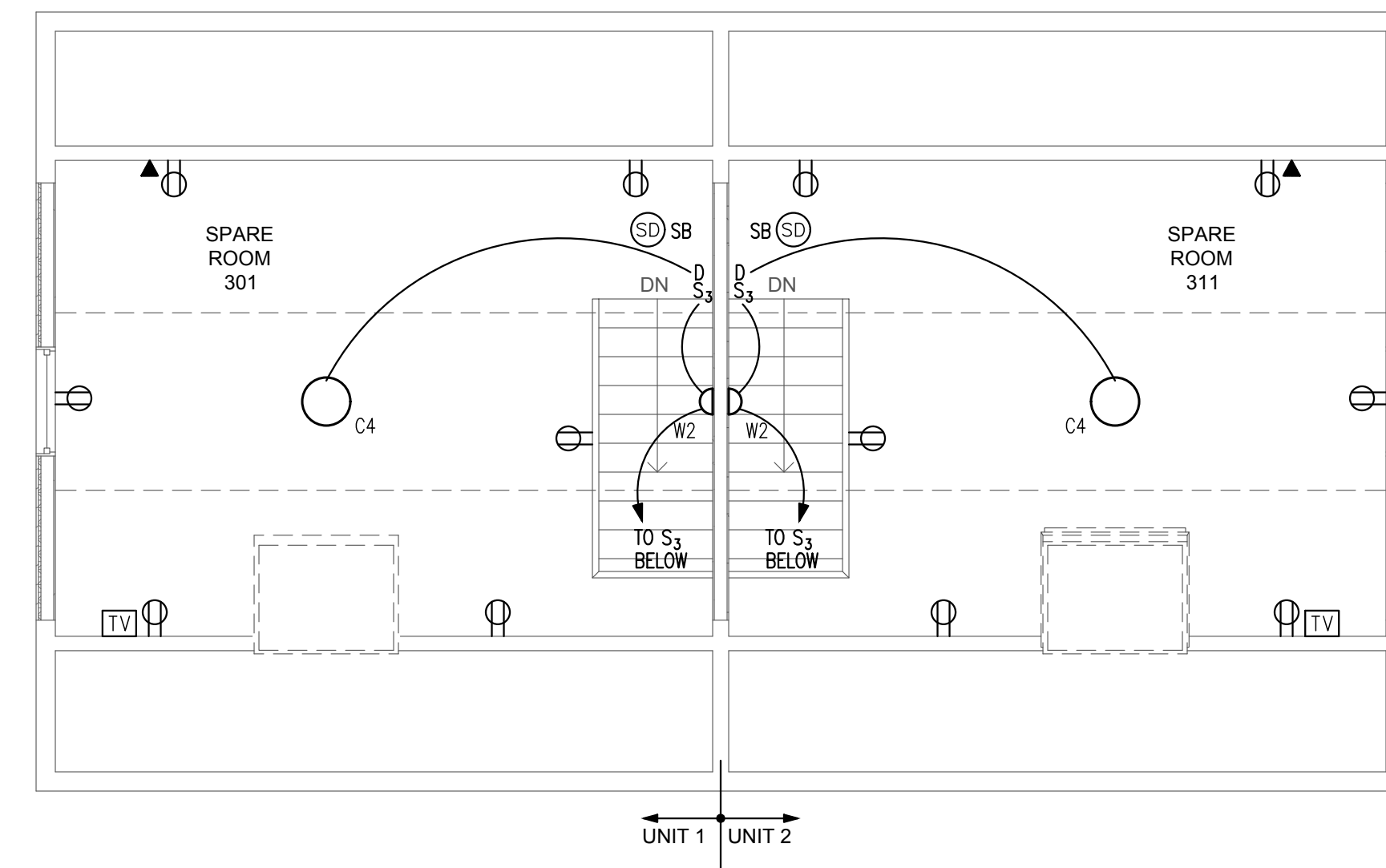
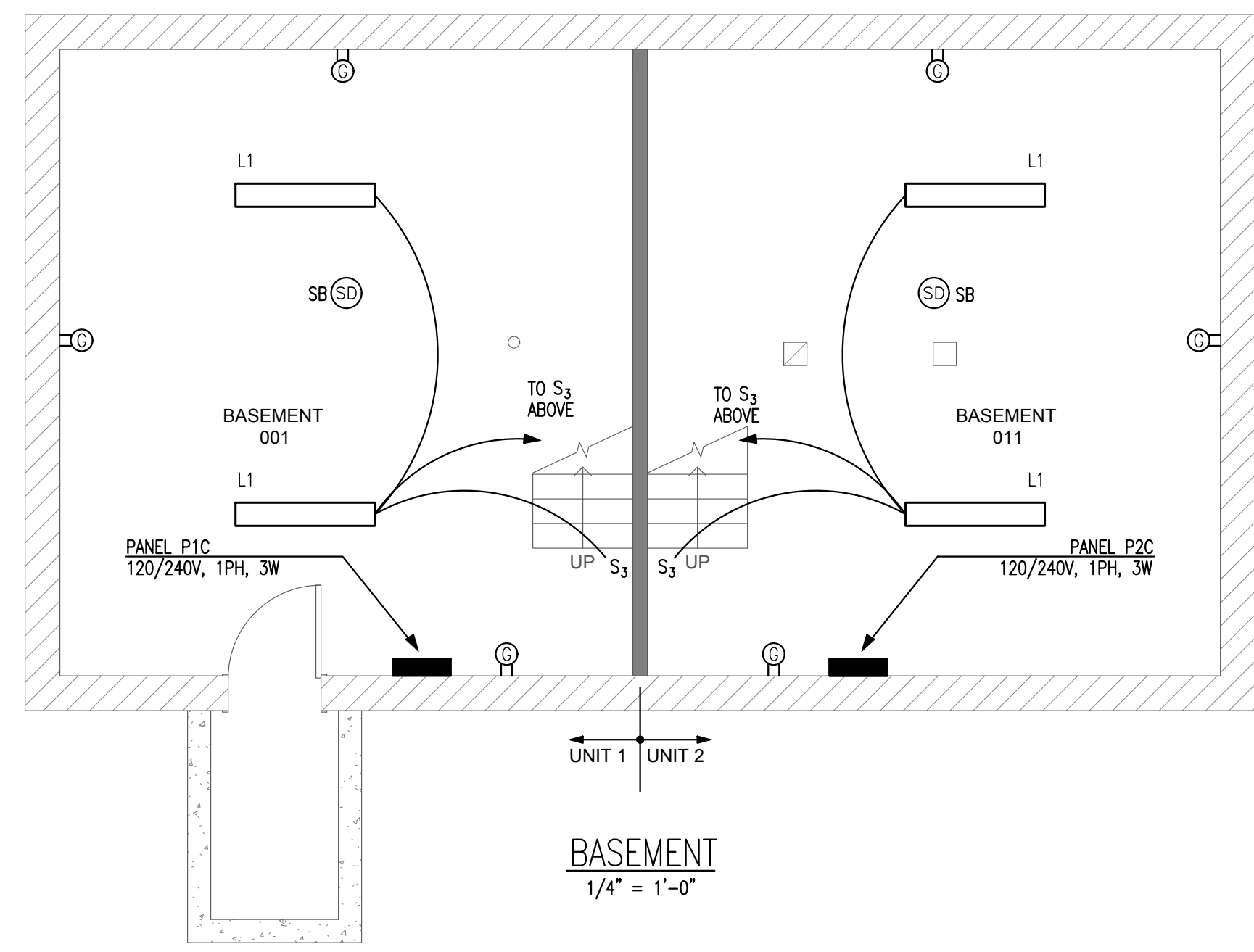


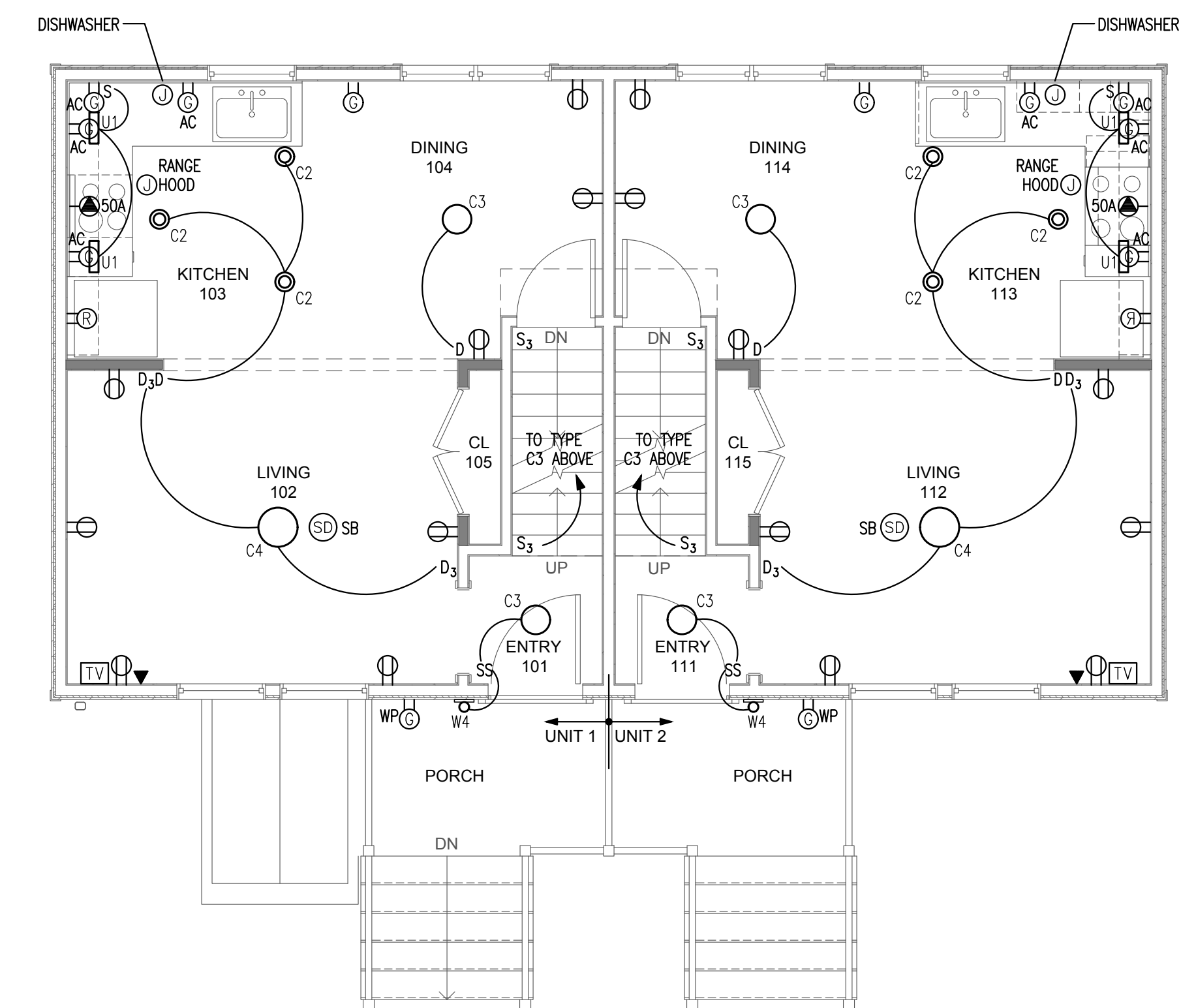
SECOND FLOOR
1/4" = 1'-0"



THIRD FLOOR
1/4" = 1'-0"



BASEMENT
1/4" = 1'-0"



FIRST FLOOR
1/4" = 1'-0"

Ella Housing
77-79 Congress Street

BRIBURN
architecture for life
28 Maple St | Suite 202 | Portland, ME 04107 | 207.774.8482

CONSULTANTS:

PROJECT NO: 1706
ISSUED: 08/16/17
DRAWN BY: JLC
CHECKED BY: WSB
SHEET TITLE:
ELECTRICAL
PLANS

C-E101