

**FINISH LEGEND**

**WALL**

- W1 PLASTER
- W2 PLASTER + PAINTED WALLPAPER
- W3 GYPSUM WALL BOARD
- W4 PAINTED WOOD WAINSCOTT
- W5 CERAMIC TILE

**CEILING**

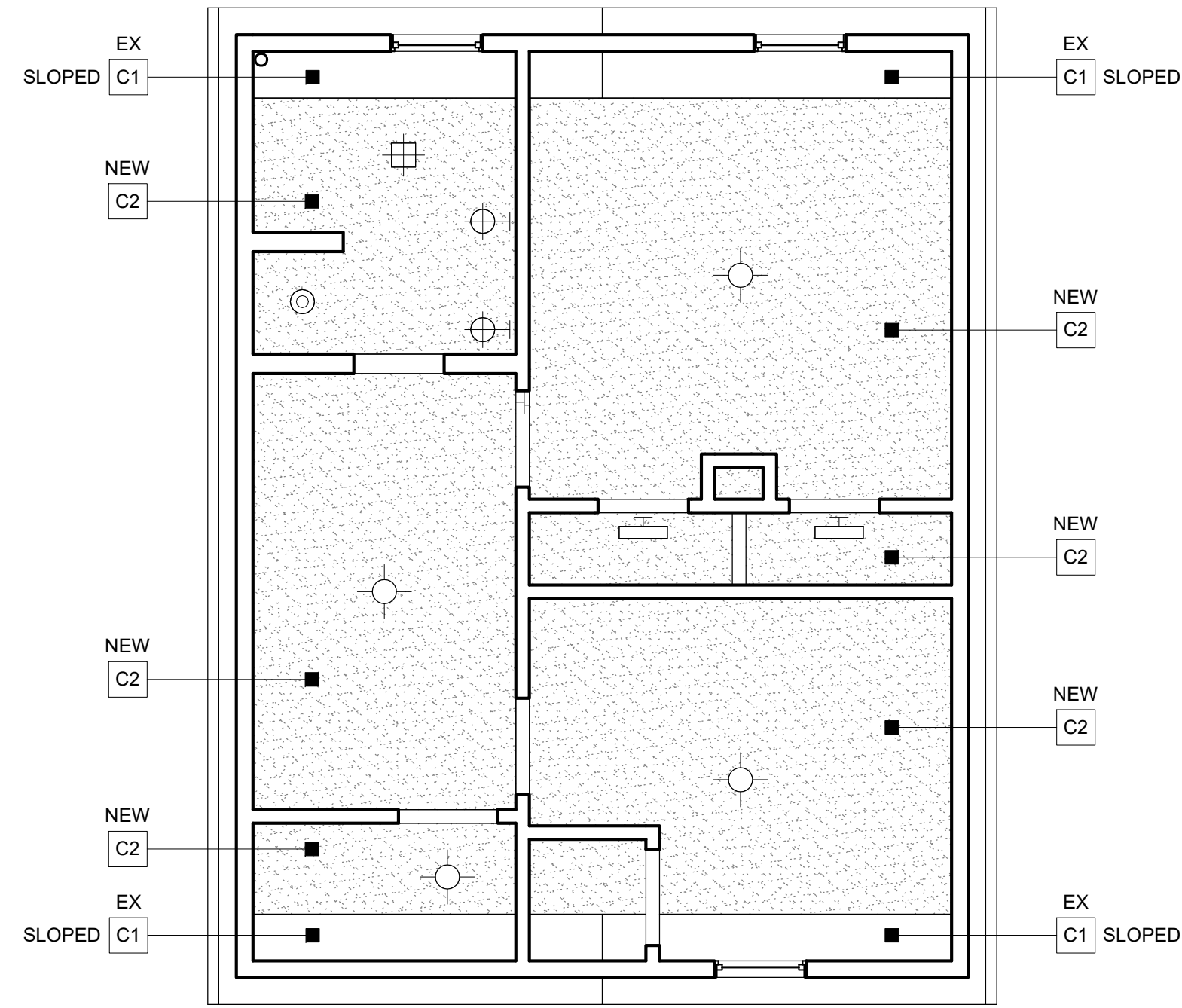
- C1 PLASTER
- C2 GYPSUM WALL BOARD ON STRAPPING
- C3 GYPSUM WALL BOARD ON FURRING & SOUND ISOLATION CLIPS

**FLOOR**

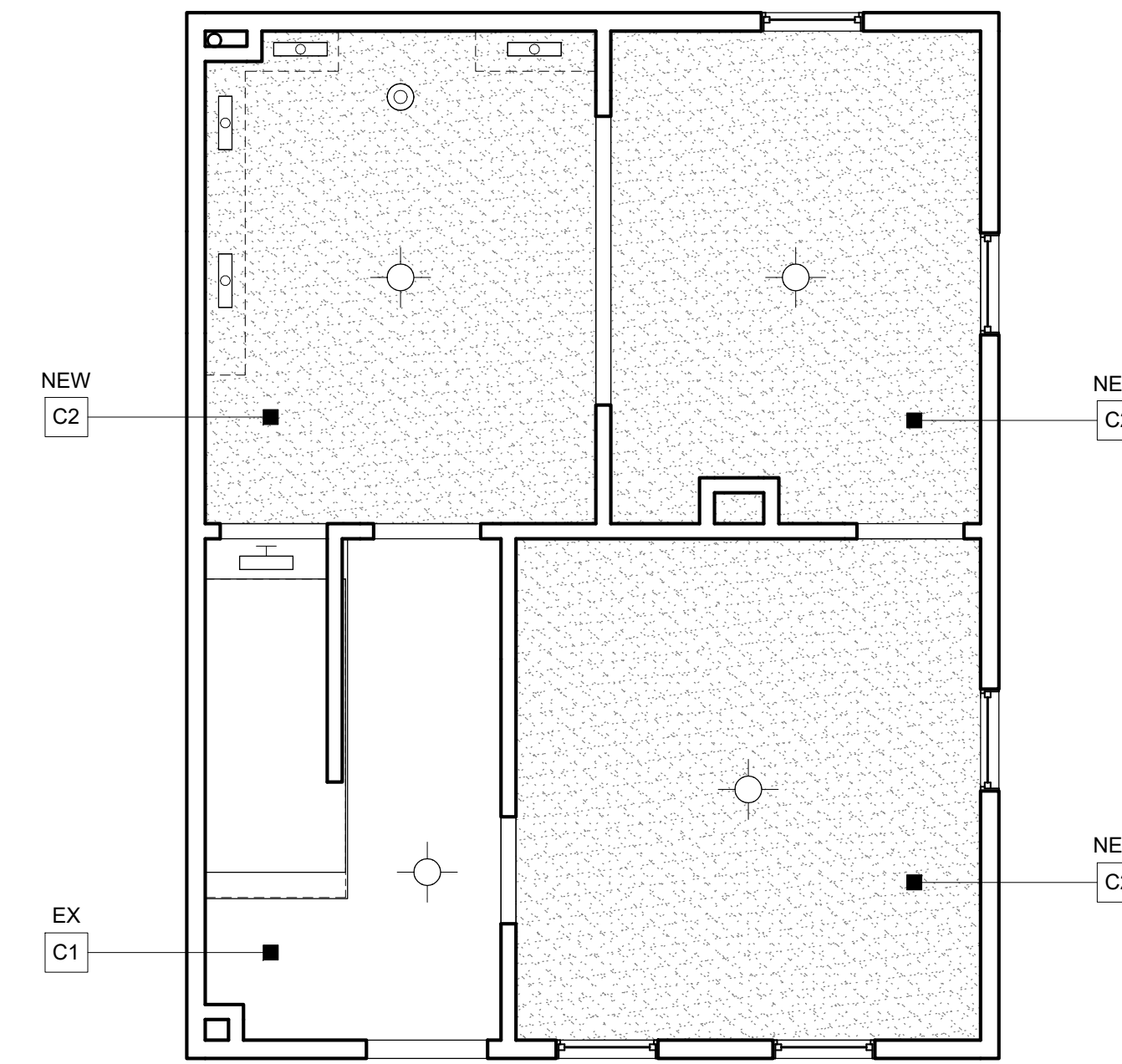
- F1 CLEAR FINISH HARDWOOD
- F2 PAINTED HARDWOOD
- F3 CLEAR FINISH SOFTWOOD
- F4 PAINTED SOFTWOOD
- F5 PORCELAIN TILE
- F6 CARPET
- F7 LAMINATE
- F8 CONCRETE

**LIGHTING SYMBOL LEGEND**

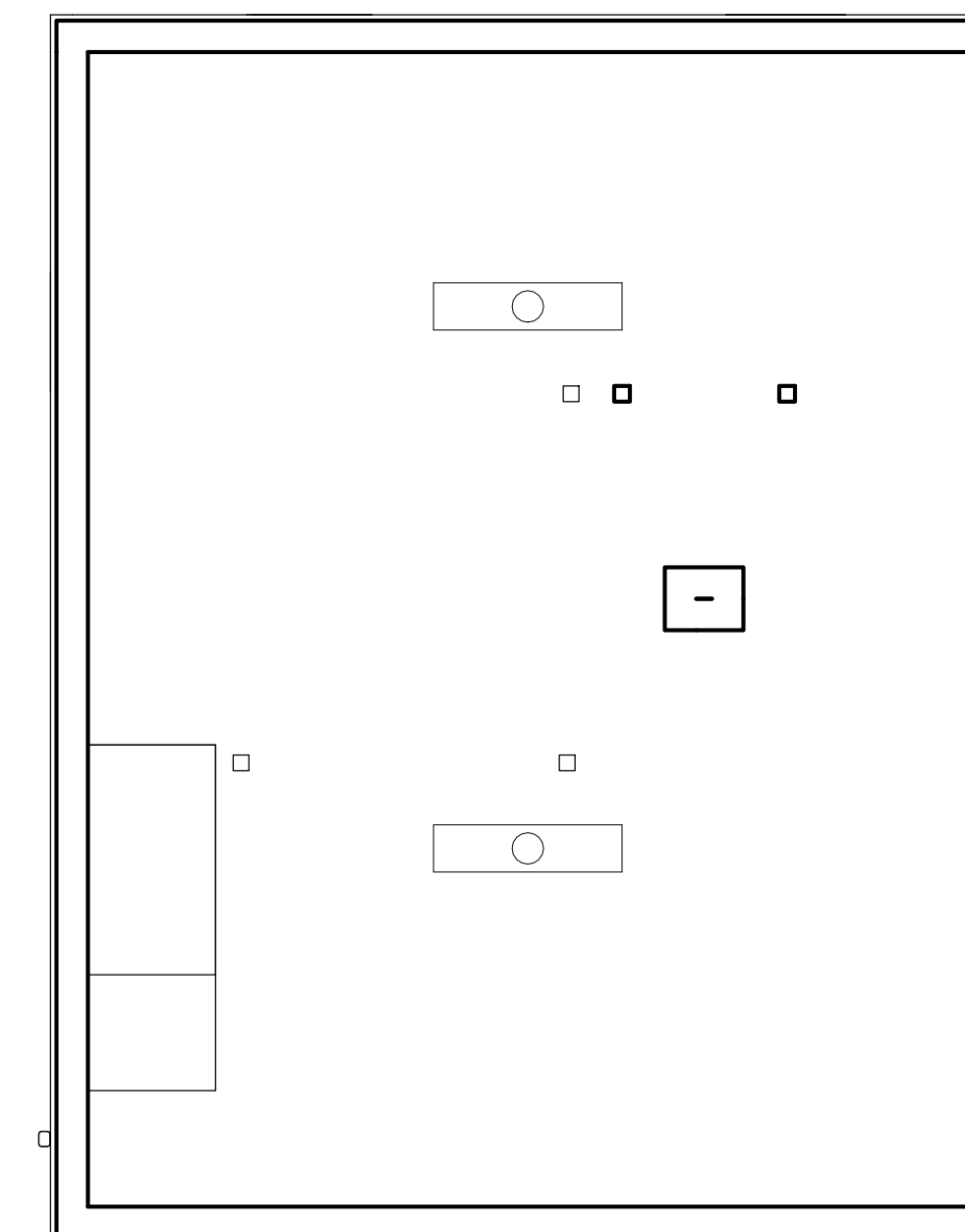
	SURFACE MOUNTED LIGHT FIXTURE		4' SURFACE MOUNTED FLUORESCENT LIGHT FIXTURE
	RECESSED LIGHT FIXTURE		UNDER-CABINET LIGHT FIXTURE
	WALL MOUNTED LIGHT FIXTURE		PENDANT LIGHT FIXTURE
	EXHAUST FAN/LIGHT		WALL MOUNTED STRIP LIGHT
	GARAGE DOOR OPENER		CEILING FAN/LIGHT



③ SECOND FLOOR REFLECTED CEILING PLAN  
1/4" = 1'-0"



② FIRST FLOOR REFLECTED CEILING PLAN  
1/4" = 1'-0"



① BASEMENT REFLECTED CEILING PLAN  
1/4" = 1'-0"



**ELLA HOUSING - 77 REAR**  
77 REAR, CONGRESS ST, PORTLAND, ME  
RENOVATIONS



**CONSULTANTS:**

No.	Name	Date

**REVISIONS:**

No.	Name	Date

**ISSUED FOR PERMITTING**

ISSUED: 10/13/2017

PROJECT No: 1706

DRAWN BY: RIF

CHECKED BY: HH

SHEET TITLE:

REFLECTED CEILING PLANS

**B-A111**