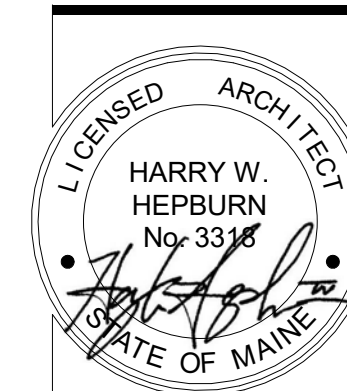




| DEMOLITION KEYNOTES | |
|---------------------|---|
| NO. | NOTE |
| D2 | REMOVE WINDOW, FRAME, WEIGHT POCKET AND INTERIOR TRIM. RE-FRAME FOR NEW OPENING |
| D3 | REMOVE DOOR, LEAVE FRAME AND TRIM IN PLACE. SALVAGE DOOR FOR RE-USE |
| D5 | REMOVE DOOR, FRAME AND TRIM. DISCARD |
| D6 | DEMO WALL AS REQUIRED FOR NEW DOOR/WINDOW OPENING |
| D7 | DEMO WALL AS INDICATED |
| D8 | REMOVE STAIR |
| D9 | REMOVE PLUMBING FIXTURE AND ASSOCIATED PIPING BACK TO SOURCE |
| D10 | REMOVE BUILT-IN CASEWORK/CABINETS |
| D14 | REMOVE PANELLING FROM WALL |
| D15 | REMOVE WALLPAPER |
| D24 | REMOVE SHEET VINYL AND WOOD UNDERLAYMENT |
| D25 | REMOVE VINYL TILES |

GENERAL DEMOLITION NOTES:

1. REMOVE ALL WINDOWS AND PREPARE FOR REPLACEMENT UNLESS NOTED OTHERWISE
2. ASSUME NEW DOORS & HARDWARE. ALL EXISTING TO BE REMOVED AND SOLD / DONATED
3. SALVAGE ANYTHING POSSIBLE FOR DONATION / TAX CREDIT
4. MINIMIZE DEMOLITION TO EXISTING WALLS, AND EXISTING ELECTRICAL WIRING. INTENT IS TO RE-USE EXISTING ELECTRICAL OUTLETS & WIRING WHERE POSSIBLE.



ELLA Housing
77 Congress Street - Front



CONSULTANTS:

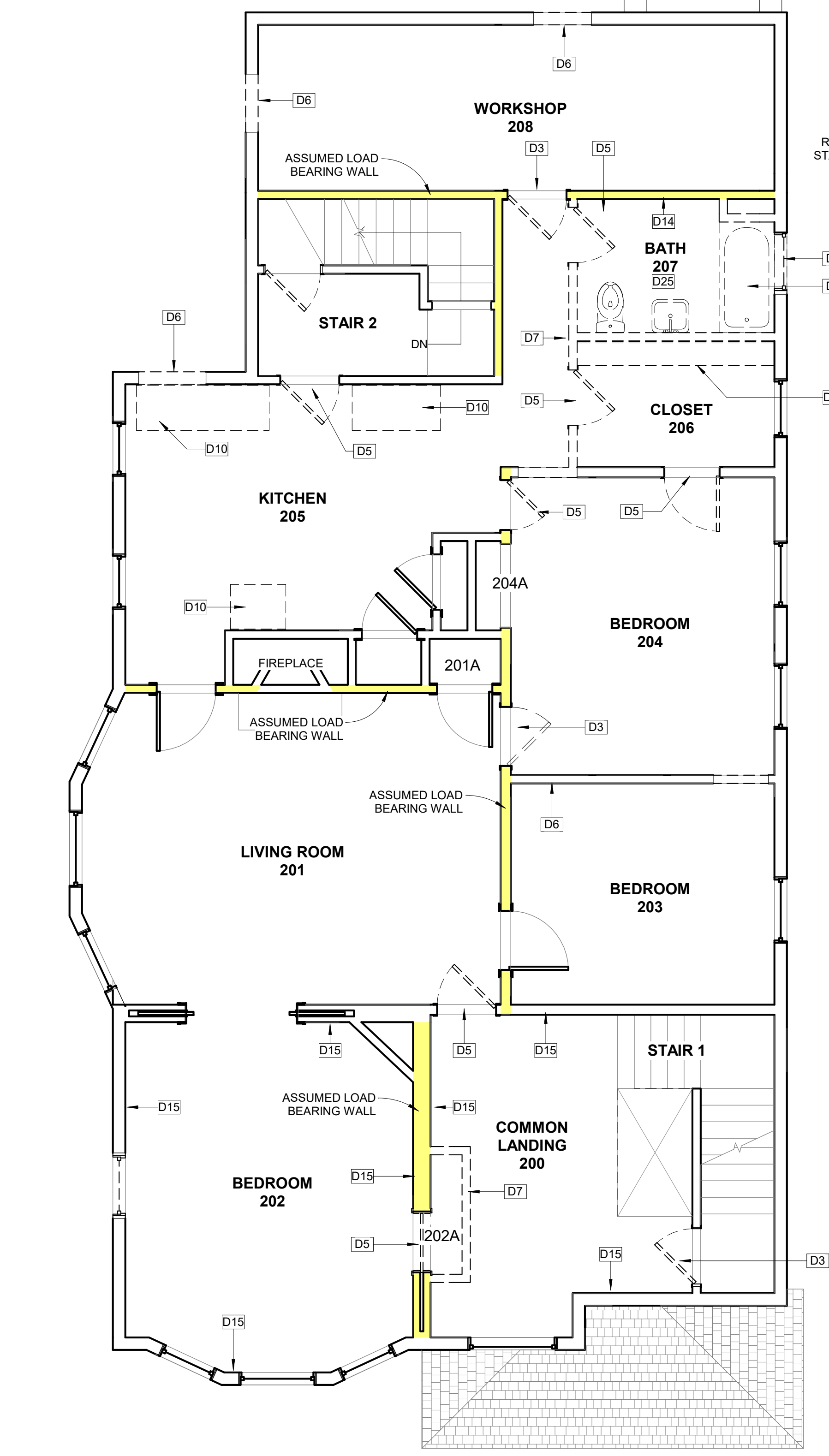
REVISIONS:

| No. | Name | Date |
|-----|-------|----------|
| 1 | REV 1 | 11/21/17 |

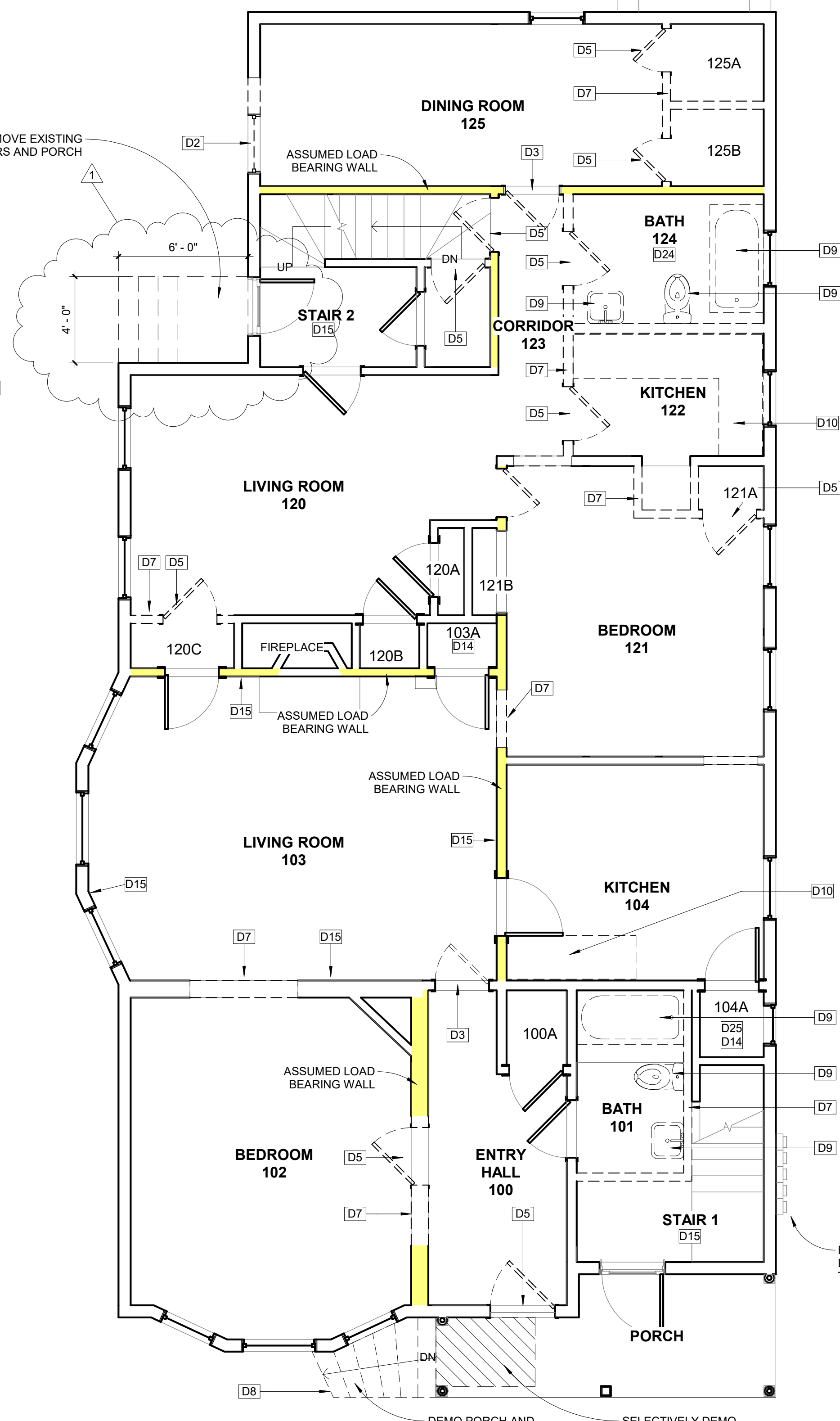
ISSUED FOR CONSTRUCTION

ISSUED: 10/13/2017
PROJECT No: 1706
DRAWN BY: LG
CHECKED BY: HH
SHEET TITLE:
DEMOLITION PLANS

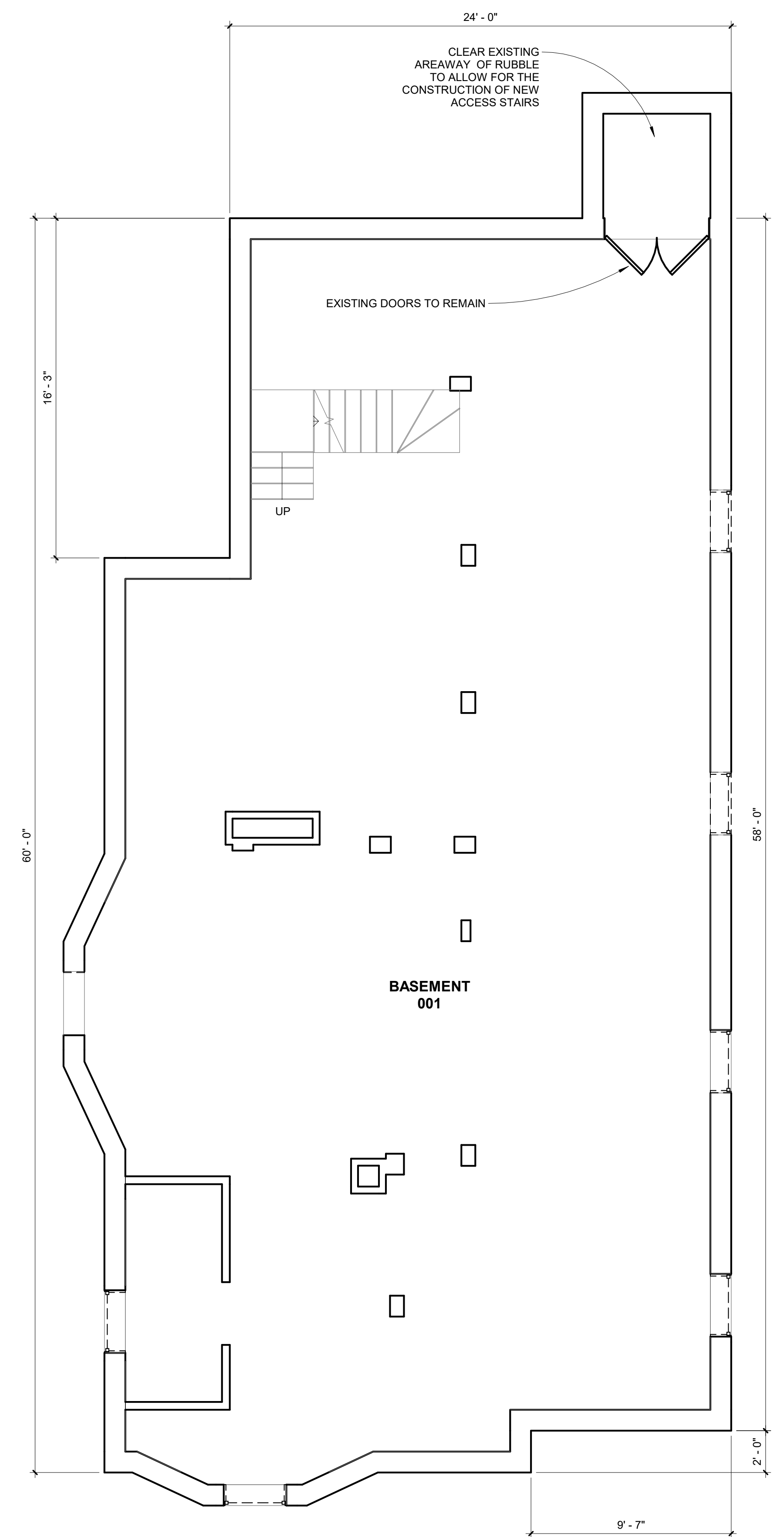
A-D101



3 SECOND FLOOR DEMO PLAN
1/4" = 1'-0"



2 FIRST FLOOR DEMO PLAN
1/4" = 1'-0"



1 DEMO PLAN - Basement
1/4" = 1'-0"