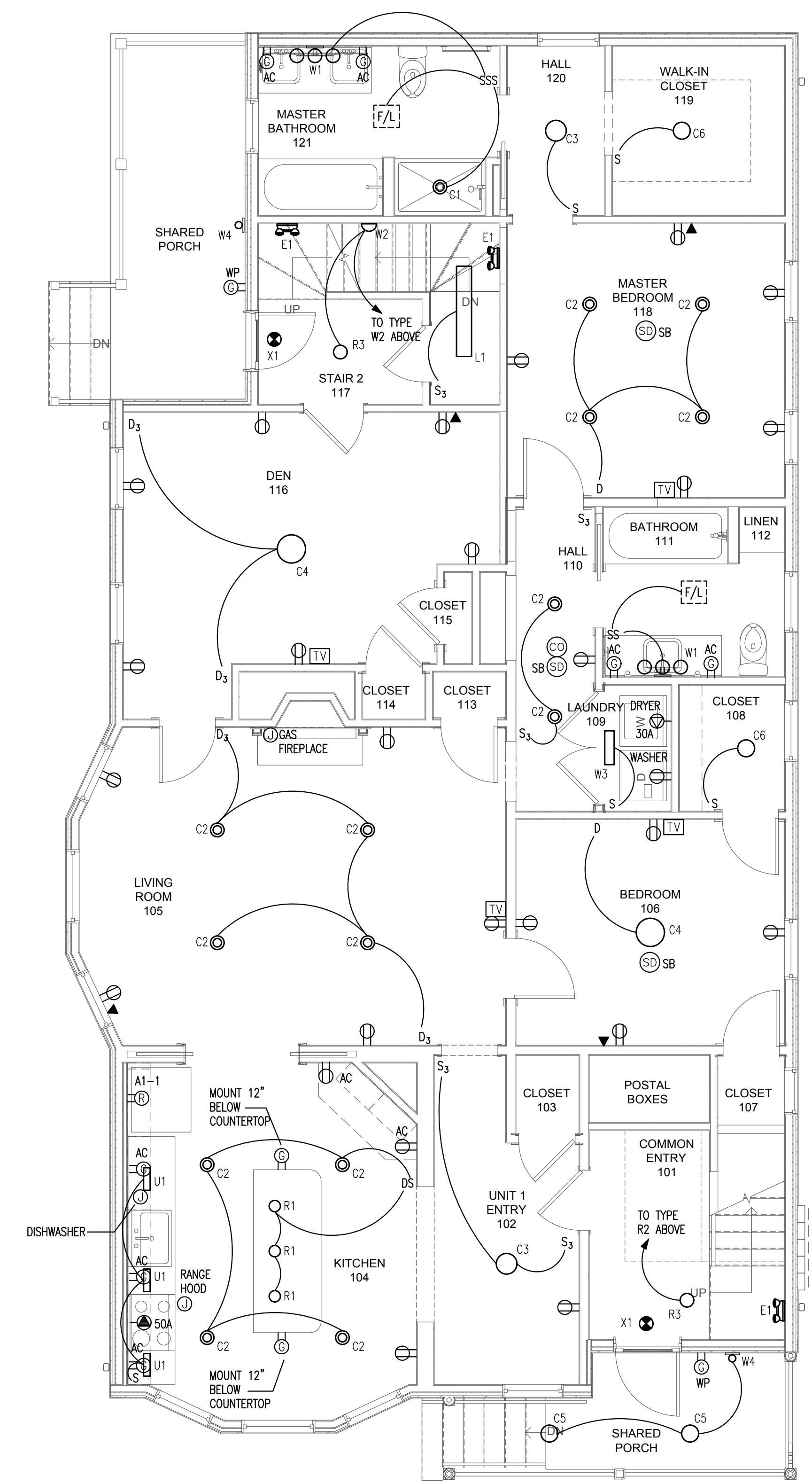
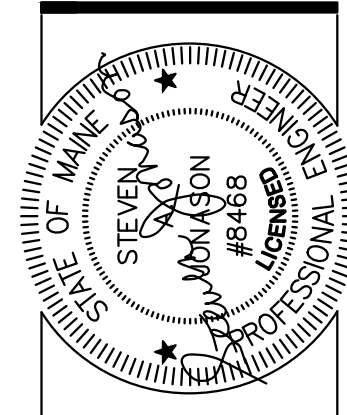


**BASEMENT**  
1/4" = 1'-0"



**FIRST FLOOR**  
1/4" = 1'-0"



**Ella Housing**  
77-79 Congress Street

**BRIBURN**  
architecture for life  
28 Maple St | Suite 202 | Portland, ME 04107 | 207.774-8482

CONSULTANTS:

PROJECT NO: 1706  
ISSUED: 11/03/17  
DRAWN BY: JLC  
CHECKED BY: WSB  
SHEET TITLE:  
BASEMENT AND  
1ST FLOOR  
ELECTRICAL PLANS

ISSUED FOR  
CONSTRUCTION

**A-E101**