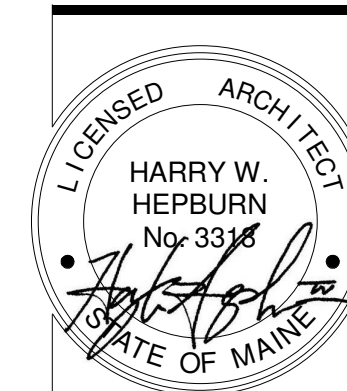




DEMOLITION KEYNOTES	
NO.	NOTE
D2	REMOVE WINDOW, FRAME, WEIGHT POCKET AND INTERIOR TRIM. RE-FRAME FOR NEW OPENING
D3	REMOVE DOOR, LEAVE FRAME AND TRIM IN PLACE. SALVAGE DOOR FOR RE-USE
D5	REMOVE DOOR, FRAME AND TRIM. DISCARD
D6	DEMO WALL AS REQUIRED FOR NEW DOOR/WINDOW OPENING
D7	DEMO WALL AS INDICATED
D8	REMOVE STAIR
D9	REMOVE PLUMBING FIXTURE AND ASSOCIATED PIPING BACK TO SOURCE
D10	REMOVE BUILT-IN CASEWORK/CABINETY
D14	REMOVE PANELLING FROM WALL
D15	REMOVE WALLPAPER
D24	REMOVE SHEET VINYL AND WOOD UNDERLAYMENT
D25	REMOVE VINYL TILES

GENERAL DEMOLITION NOTES:

1. REMOVE ALL WINDOWS AND PREPARE FOR REPLACEMENT UNLESS NOTED OTHERWISE
2. ASSUME NEW DOORS & HARDWARE. ALL EXISTING TO BE REMOVED AND SOLD / DONATED
3. SALVAGE ANYTHING POSSIBLE FOR DONATION / TAX CREDIT
4. MINIMIZE DEMOLITION TO EXISTING WALLS, AND EXISTING ELECTRICAL WIRING. INTENT IS TO RE-USE EXISTING ELECTRICAL OUTLETS & WIRING WHERE POSSIBLE.



ELLA Housing
77 Congress Street - Front

BR BURN
architecture for life
20 Main St. Suite 202 Portland, ME 04101 (207) 774-8482

CONSULTANTS:

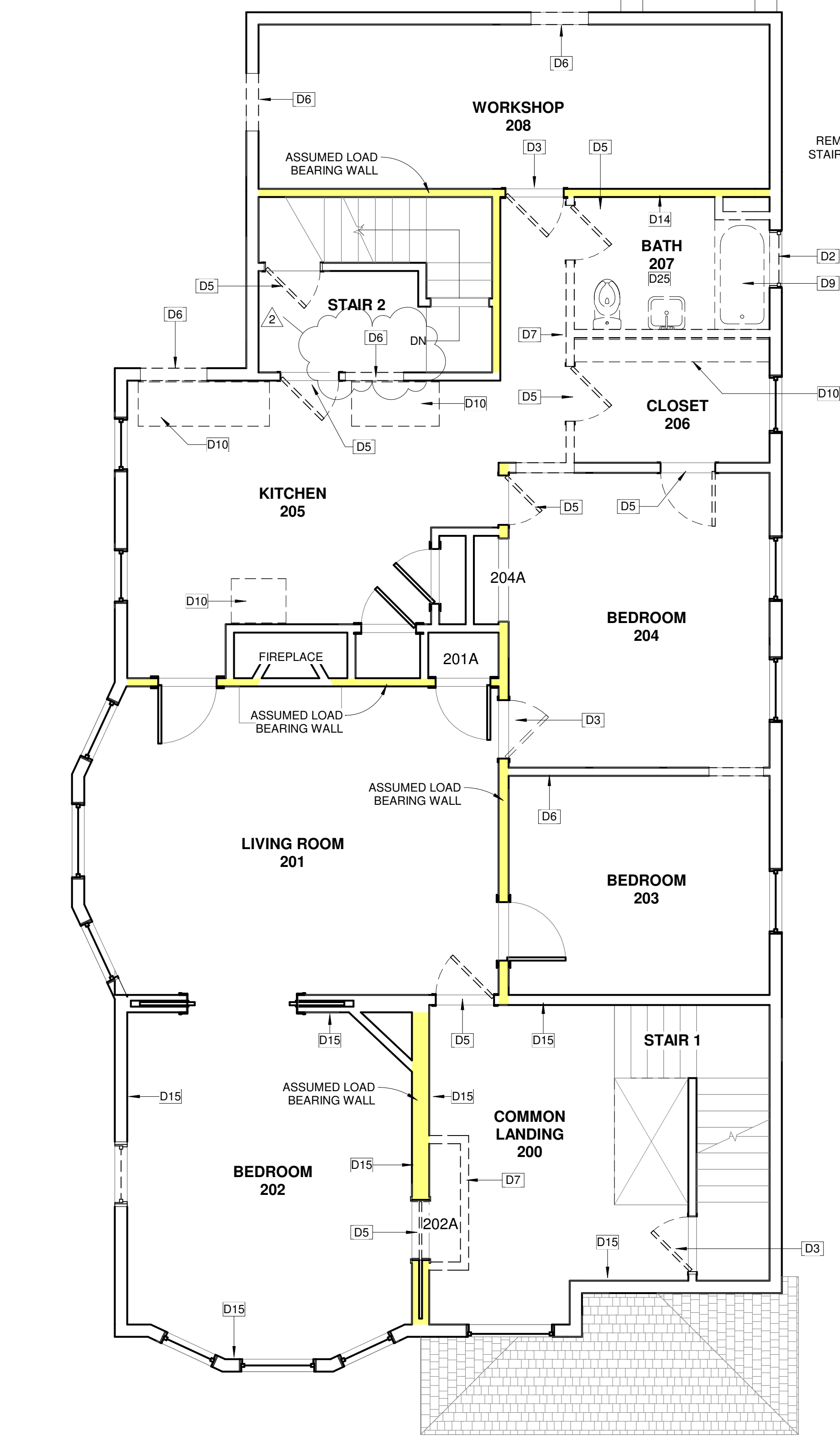
REVISIONS:

No.	Name	Date
1	REV 1	11/21/17
2	REV 2	12/11/17

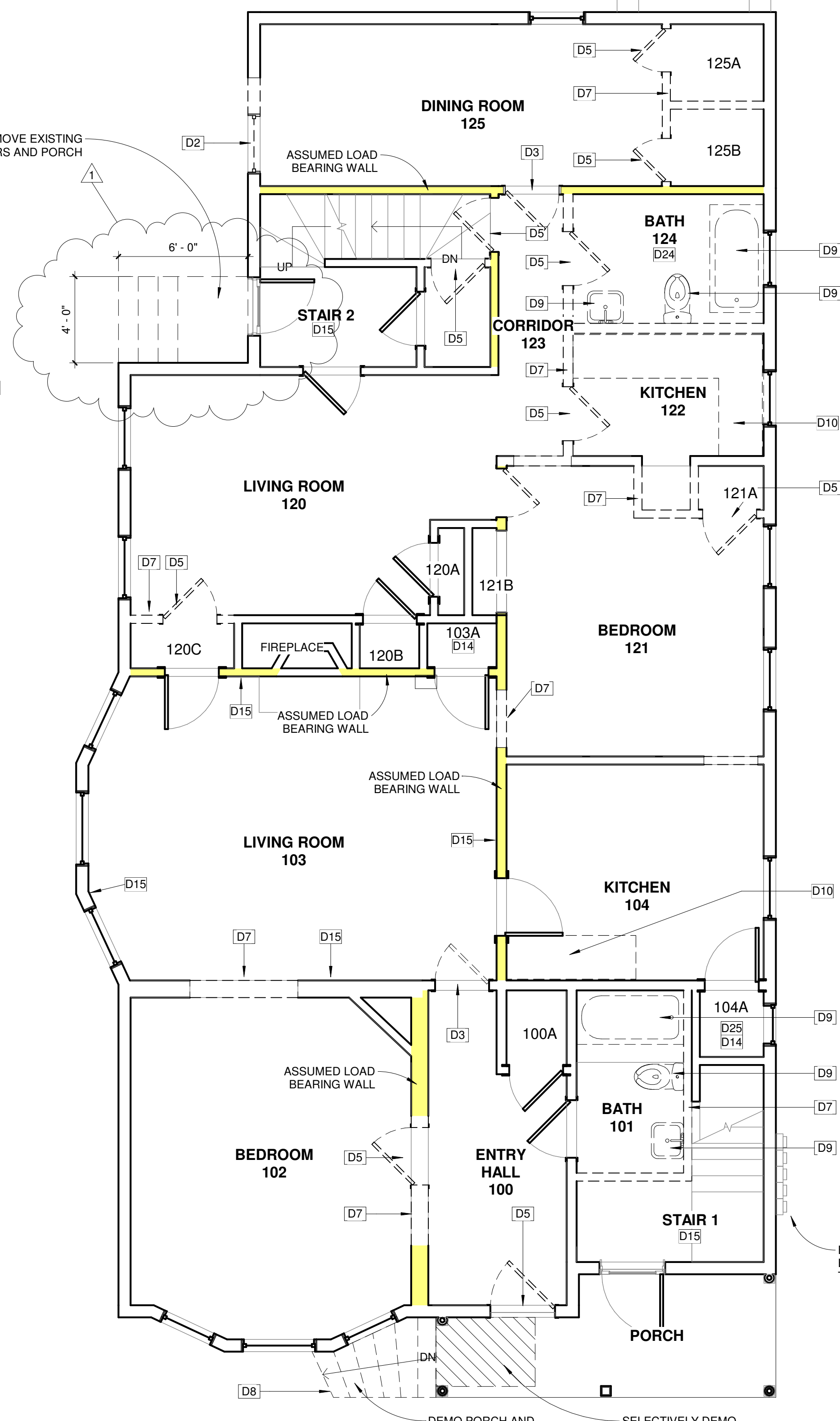
ISSUED FOR CONSTRUCTION

ISSUED: 11/21/2017
PROJECT No: 1706
DRAWN BY: LG
CHECKED BY: HH
SHEET TITLE: DEMOLITION PLANS

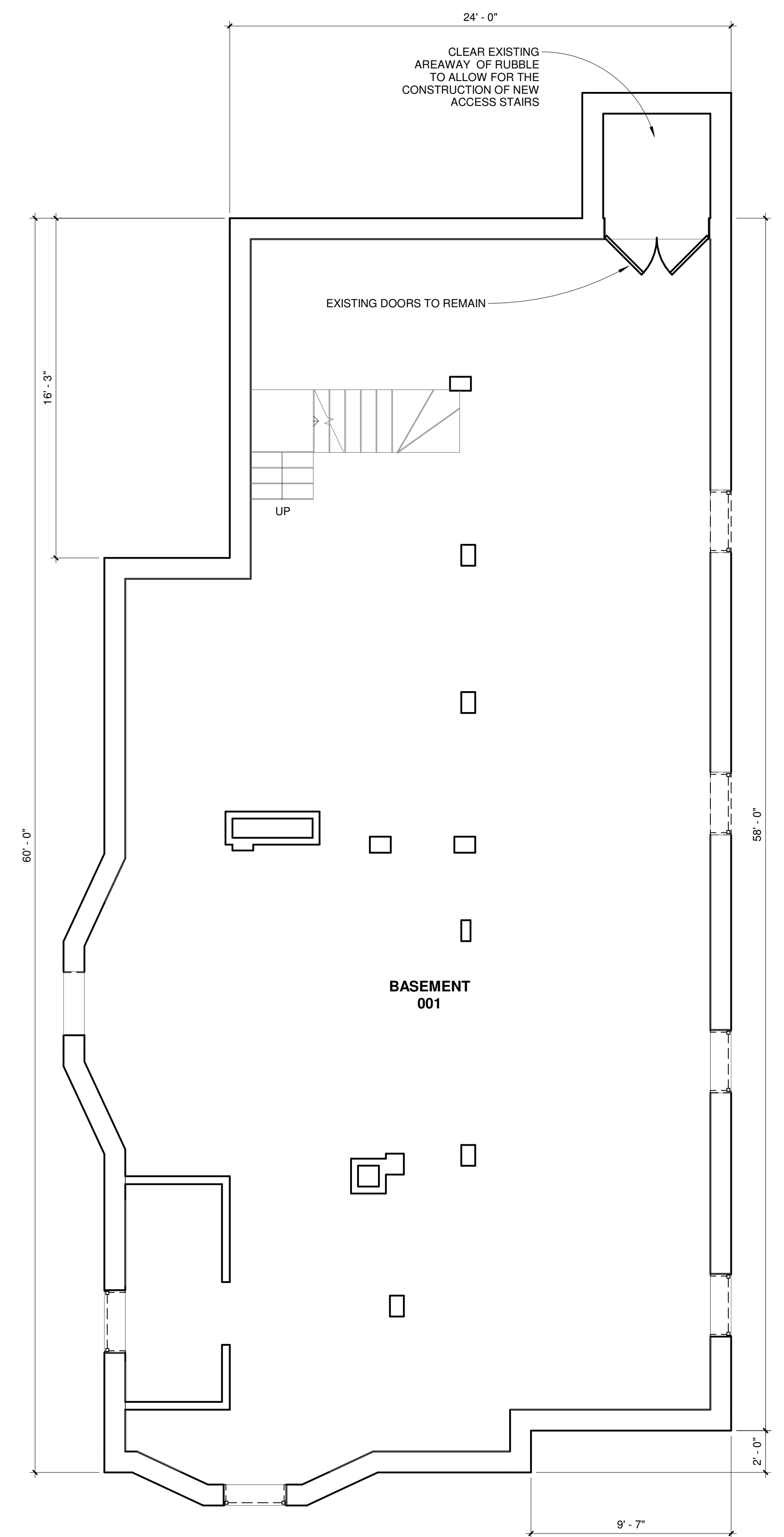
A-D101



3 SECOND FLOOR DEMO PLAN
1/4" = 1'-0"



2 FIRST FLOOR DEMO PLAN
1/4" = 1'-0"



1 DEMO PLAN - Basement
1/4" = 1'-0"