

ELLA Housing
77 Congress Street - Front

BR BURN
architecture for life
28 Maple St. Suite 202 Portland, ME 04101 (207) 774-8482

CONSULTANTS:

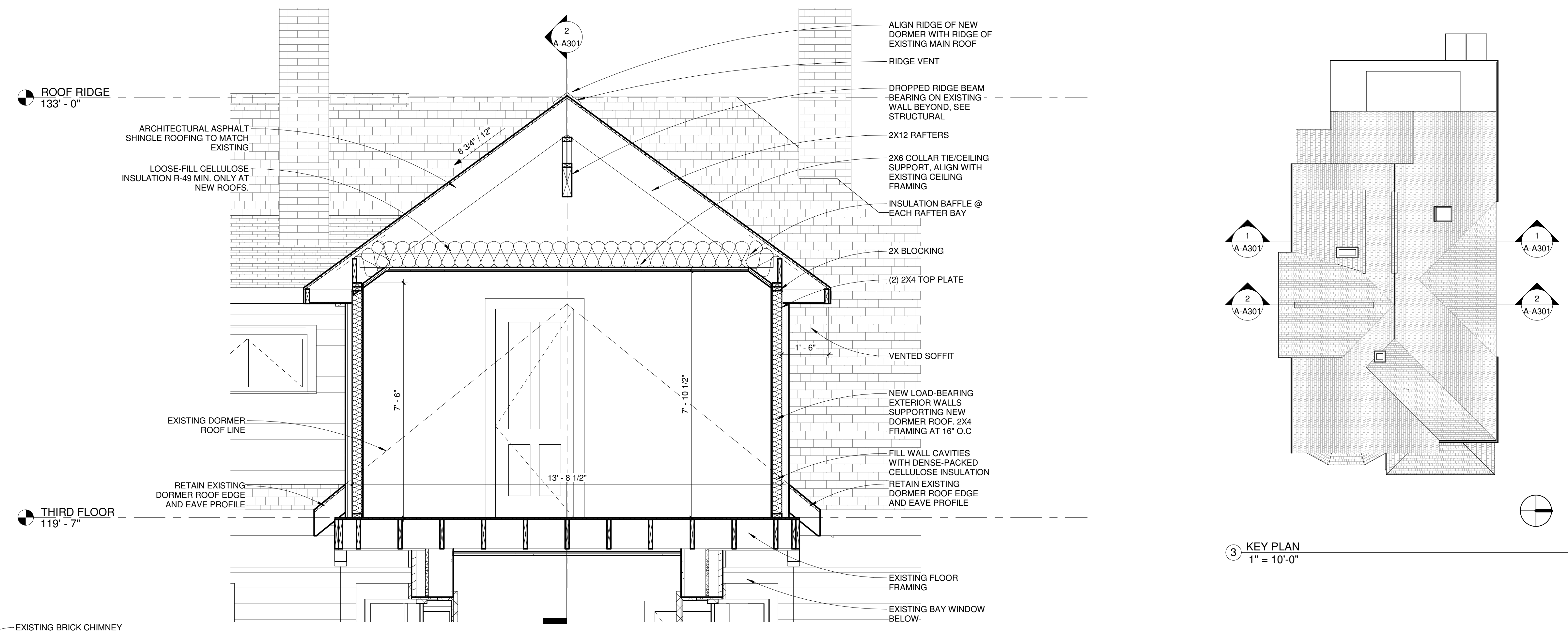
REVISIONS:

No.	Name	Date
2	REV 2	12/11/17

ISSUED FOR CONSTRUCTION

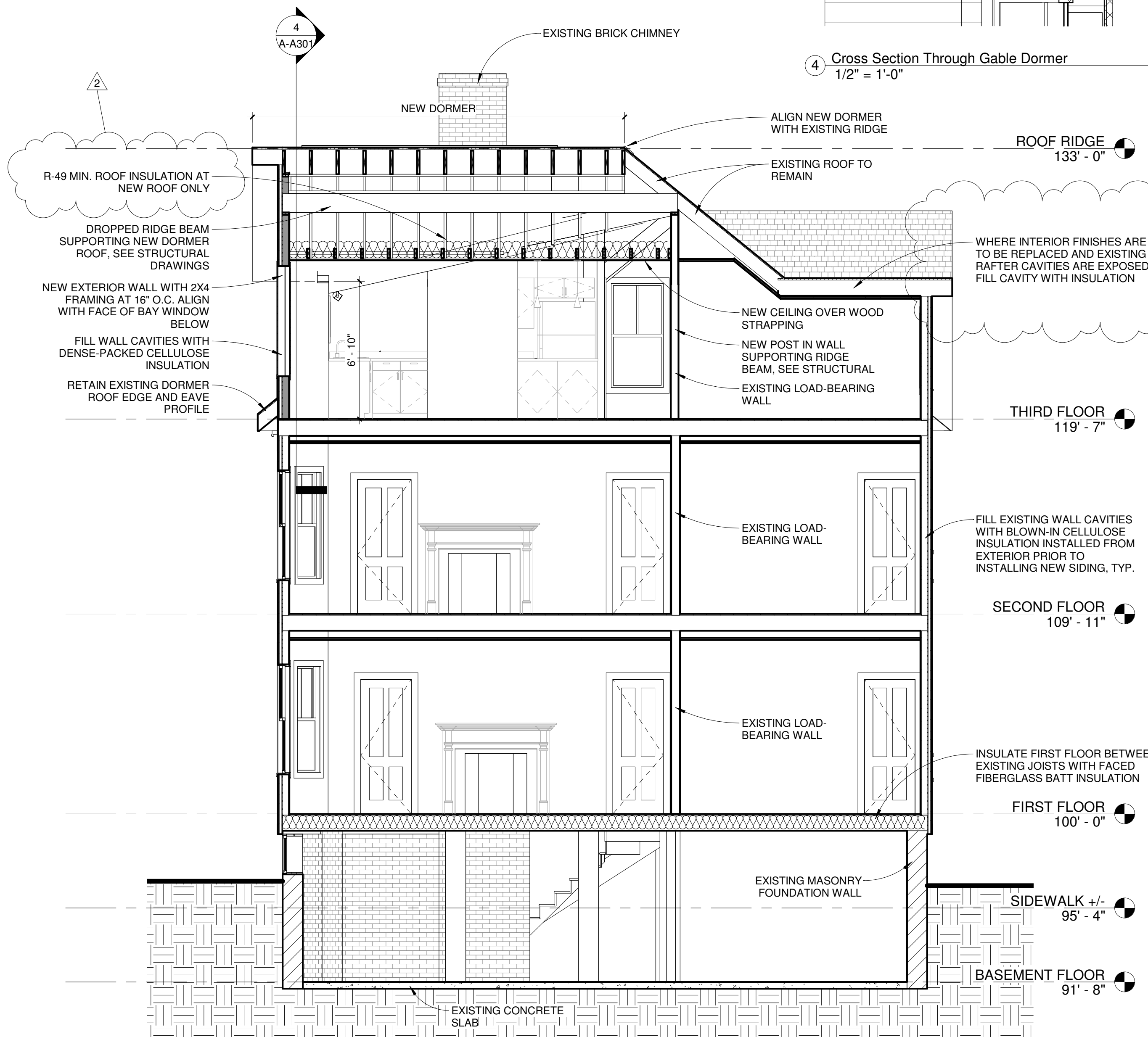
ISSUED: 11/21/2017
PROJECT No: 1706
DRAWN BY: RJP
CHECKED BY: -
SHEET TITLE: BUILDING SECTIONS

A-A301

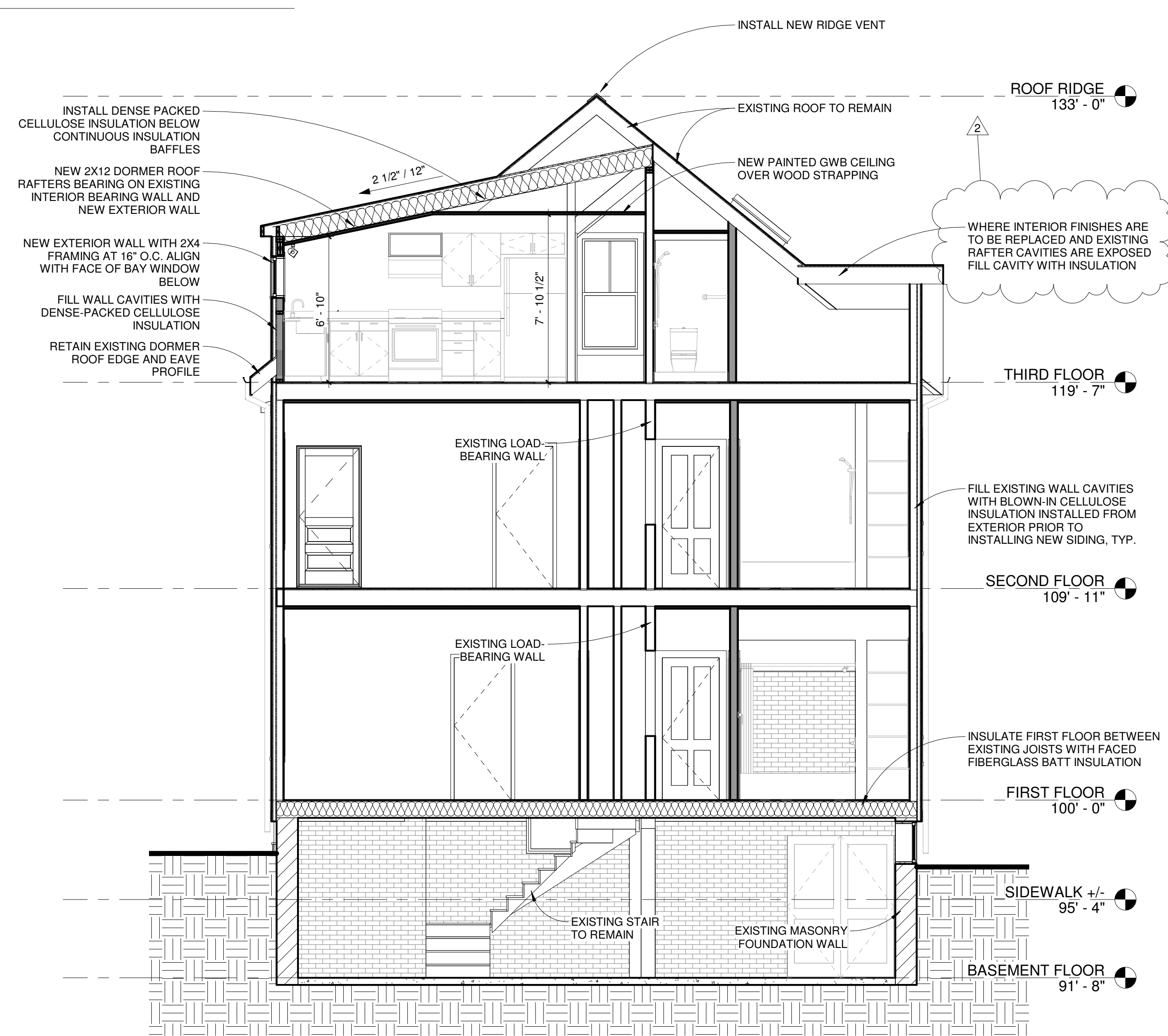


3 KEY PLAN
1" = 10'-0"

4 Cross Section Through Gable Dormer
1/2" = 1'-0"



2 Section - New Gable Dormer
1/4" = 1'-0"



1 Section - New Shed Dormer
1/4" = 1'-0"