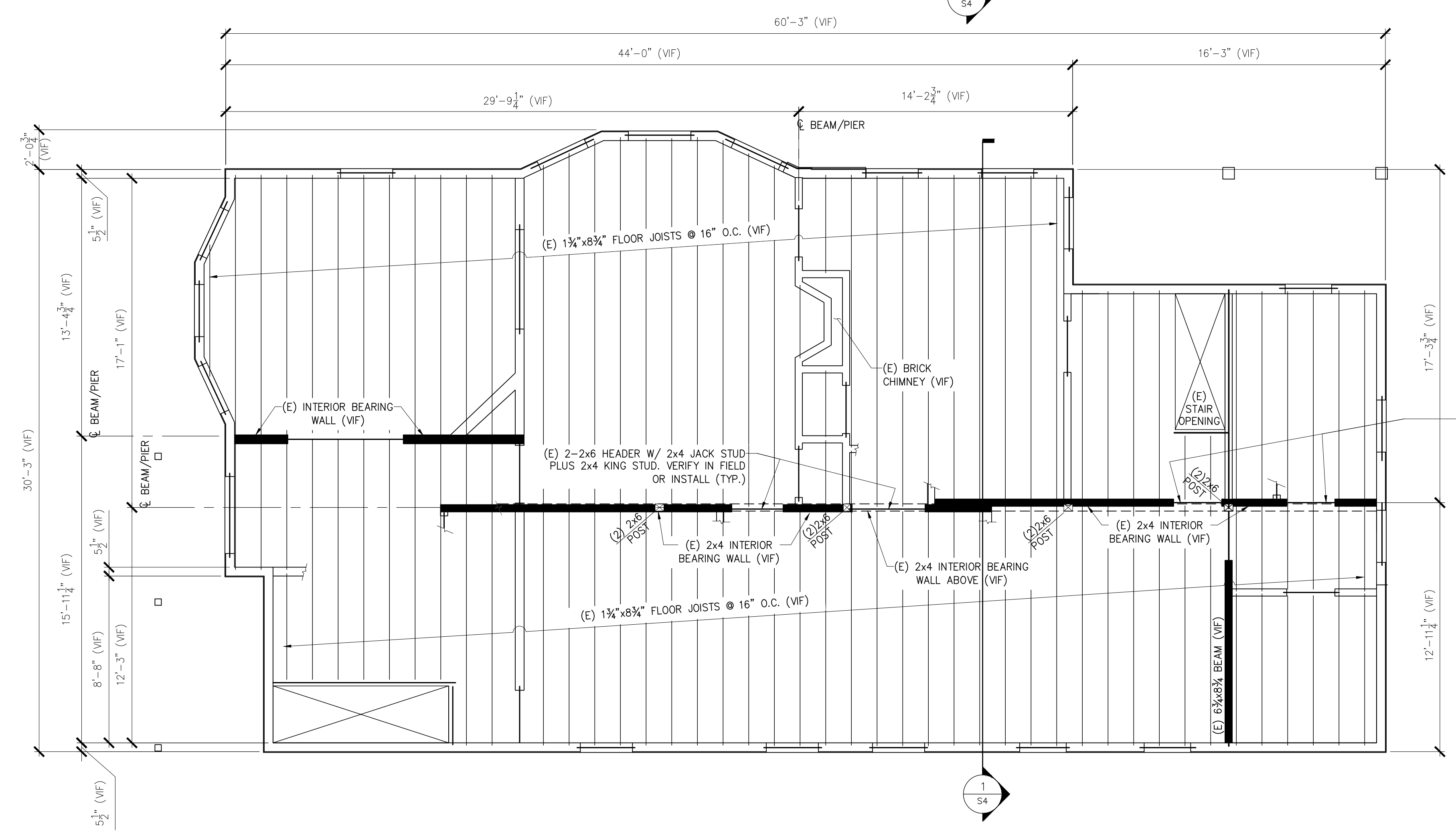


**FOUNDATION AND FIRST FLOOR FRAMING PLAN (77 CONGRESS ST.- FRONT)**  
1/4" = 1'-0"

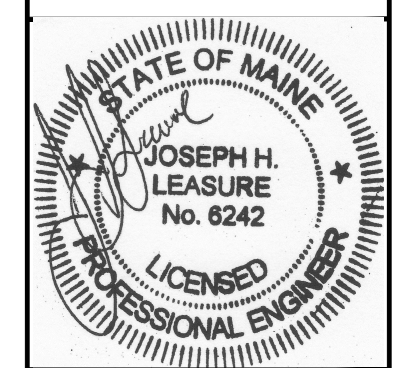
- NOTES:
- SEE GENERAL NOTES ON DWG S0.1.
  - "E" INDICATES: EXISTING CONDITIONS, OR MEMBERS.
  - "TYP." INDICATES: TYPICAL (ALSO SEE GENERAL NOTE #5).
  - "V.I.F." INDICATES: G.C. SHALL "VERIFY IN FIELD" EXISTING DIMENSIONS, ELEVATIONS, OR CONDITIONS INDICATED AND REPORT ANY DISCREPANCIES TO THE ENGINEER.
  - "U.O.N." INDICATES: UNLESS OTHERWISE NOTED.
  - "S.S." INDICATES: STAINLESS STEEL.
  - "\*" INDICATES: INSTALL 3/4" Ø LALLY COLUMN ON 2'-0" SQ. x 12" THICK CONCRETE FOOTING W/ 3-#4 EACH WAY 3" CLR. FROM BOTTOM OF FOOTING (TYP.)
  - "\*\*" INDICATES: (3) 3/4" Ø LALLY COLUMNS ON 2'-0" SQ x 12" THICK CONC. FOOTING W/ 3-#4 EACH WAY BOTTOM (TYP.)



**SECOND FLOOR FRAMING PLAN**  
1/4" = 1'-0"

- NOTES:
- SEE GENERAL NOTES ON DWG S0.1.
  - "E" INDICATES: EXISTING CONDITIONS, OR MEMBERS.
  - "TYP." INDICATES: TYPICAL (ALSO SEE GENERAL NOTE #5).
  - "V.I.F." INDICATES: G.C. SHALL "VERIFY IN FIELD" EXISTING DIMENSIONS, ELEVATIONS, OR CONDITIONS INDICATED AND REPORT ANY DISCREPANCIES TO THE ENGINEER.
  - "U.O.N." INDICATES: UNLESS OTHERWISE NOTED.
  - "S.S." INDICATES: STAINLESS STEEL.

PRELIMINARY  
NOT FOR CONSTRUCTION



rev.	date	description	designed by: JHL	drawn by: JHL	checked by: JHL	scale: AS NOTED	date: 03/09/2017	plot date: 08/18/2017	project #: 2017-030
A	03/10/17	PRELIMINARY							
B	08/16/17	FOR PERMIT & PRICING							

**BUILDINGS LOCATED AT**  
77 CONGRESS STREET—FRONT  
PORTLAND, MAINE  
DORMER ADDITION  
FOUNDATION, FIRST FLOOR, & SECOND FLOOR FRAMING PLAN

**S2**

THESE DRAWINGS HAVE BEEN DEVELOPED BY L&L STRUCTURAL ENGINEERING SERVICES, INC. FOR THE TITLED SET ONLY. THE DRAWINGS ARE THE SOLE PROPERTY OF L&L ENGINEERING SERVICES, INC. AND THEY SHALL NOT BE USED, LENT, COPIED OR ALTERED WITHOUT THE WRITTEN CONSENT OF L&L STRUCTURAL ENGINEERING SERVICES, INC.