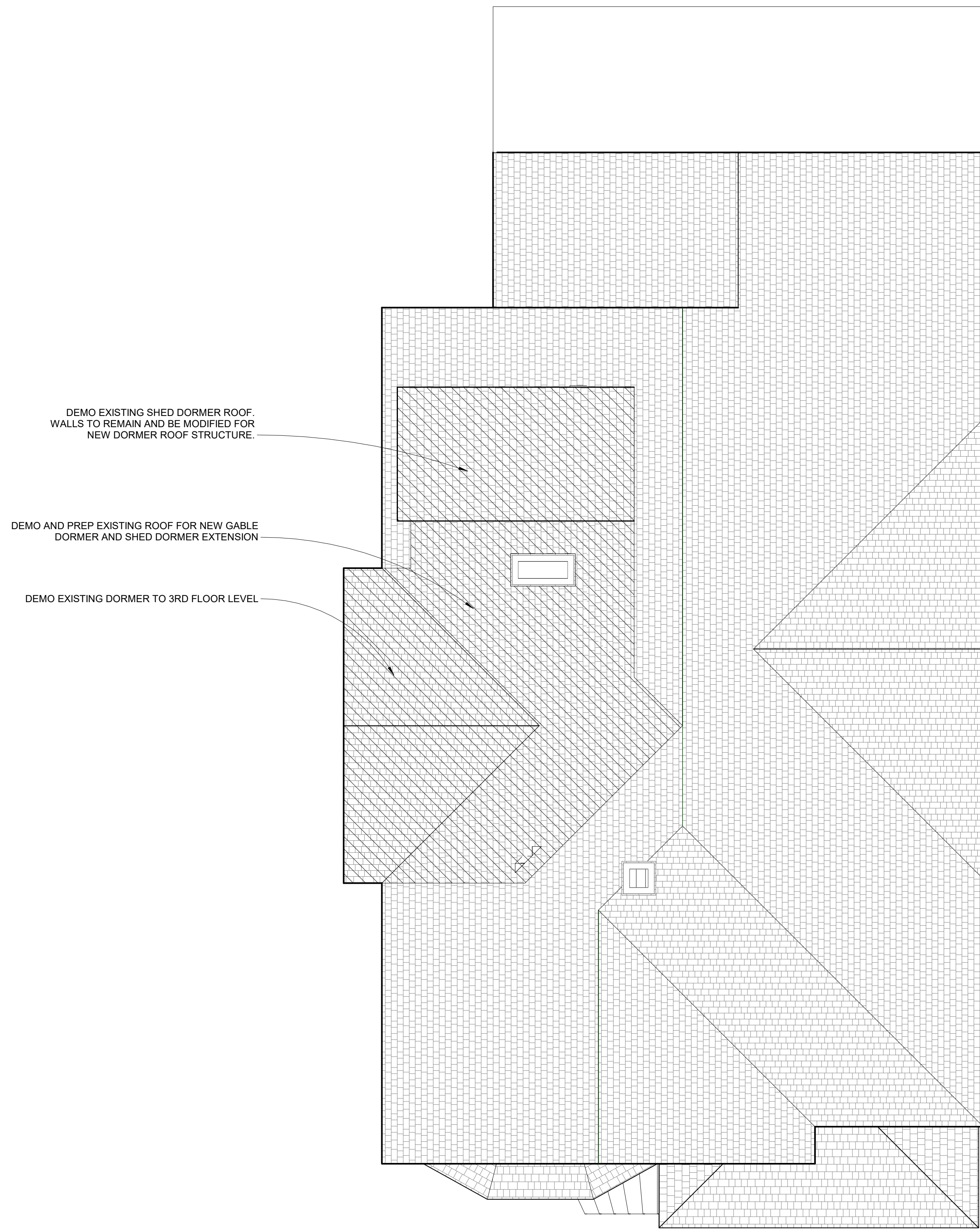


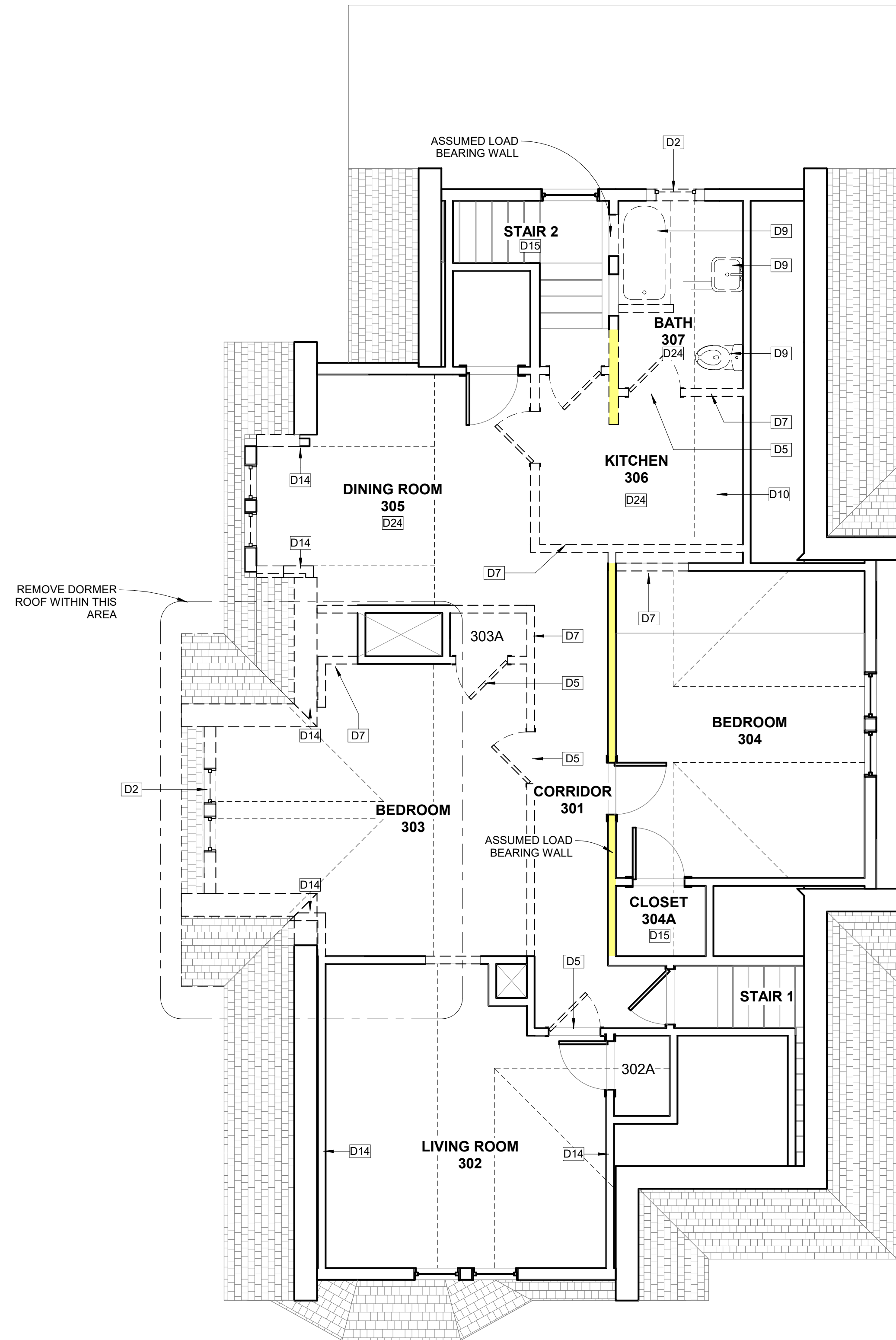


DEMOLITION KEYNOTES	
NO.	NOTE
D2	REMOVE WINDOW, FRAME, WEIGHT POCKET AND INTERIOR TRIM. RE-FRAME FOR NEW OPENING
D3	REMOVE DOOR, LEAVE FRAME AND TRIM IN PLACE. SALVAGE DOOR FOR RE-USE
D5	REMOVE DOOR, FRAME AND TRIM. DISCARD
D6	DEMO WALL AS REQUIRED FOR NEW DOOR/WINDOW OPENING
D7	DEMO WALL AS INDICATED
D8	REMOVE STAIR
D9	REMOVE PLUMBING FIXTURE AND ASSOCIATED PIPING BACK TO SOURCE
D10	REMOVE BUILT-IN CASEWORK/CABINETRY
D14	REMOVE PANELLING FROM WALL
D15	REMOVE WALLPAPER
D24	REMOVE SHEET VINYL AND WOOD UNDERLAYMENT
D25	REMOVE VINYL TILES

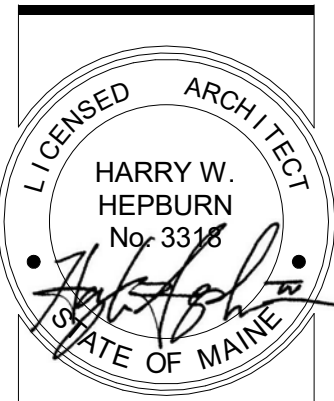
REMOVE ALL WINDOWS AND PREPARE FOR REPLACEMENT UNLESS NOTED OTHERWISE



2 DEMO PLAN - Roof  
1/4" = 1'-0"



1 THIRD FLOOR DEMO PLAN  
1/4" = 1'-0"



ELLA Housing  
77 Congress Street - Front

**BURN**  
architecture for life  
28 Maple St. Suite 202 Portland, ME 04101  
207-774-6942

CONSULTANTS:

REVISIONS:

No.	Name	Date

**ISSUED FOR PERMITTING**

ISSUED: 10/13/2017

PROJECT No: 1706

DRAWN BY: LG

CHECKED BY: HH

SHEET TITLE:  
DEMOLITION PLANS

**A-D102**