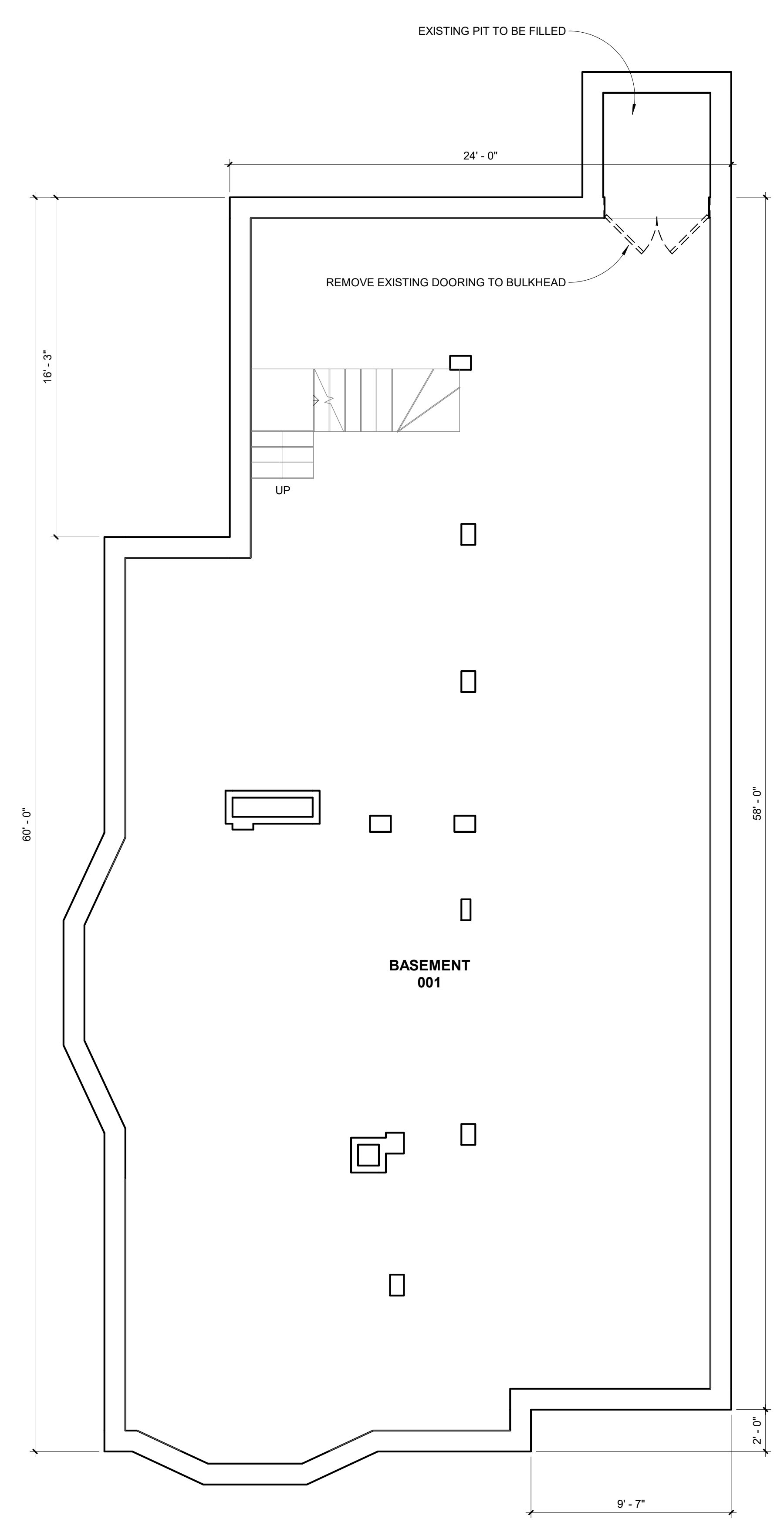
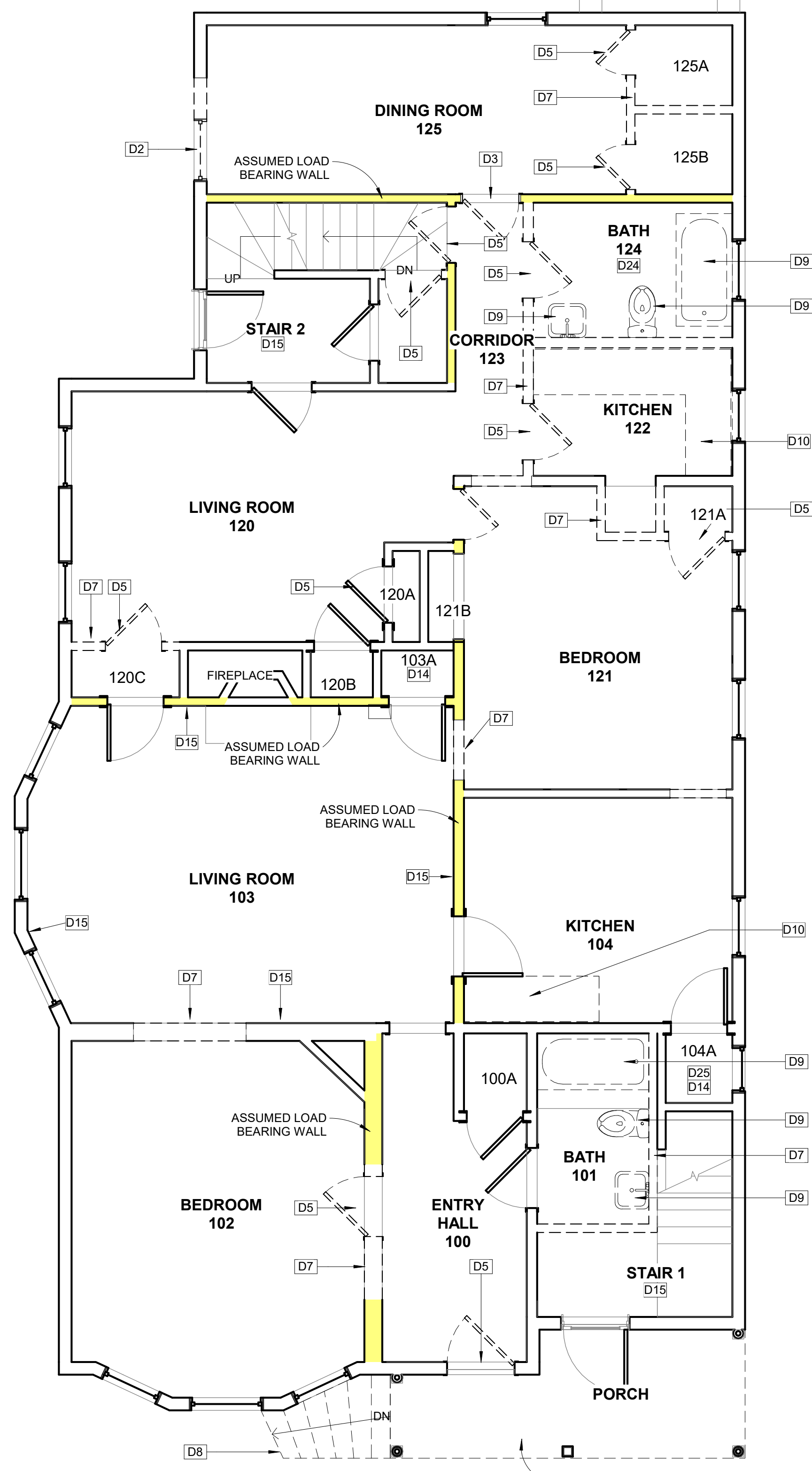
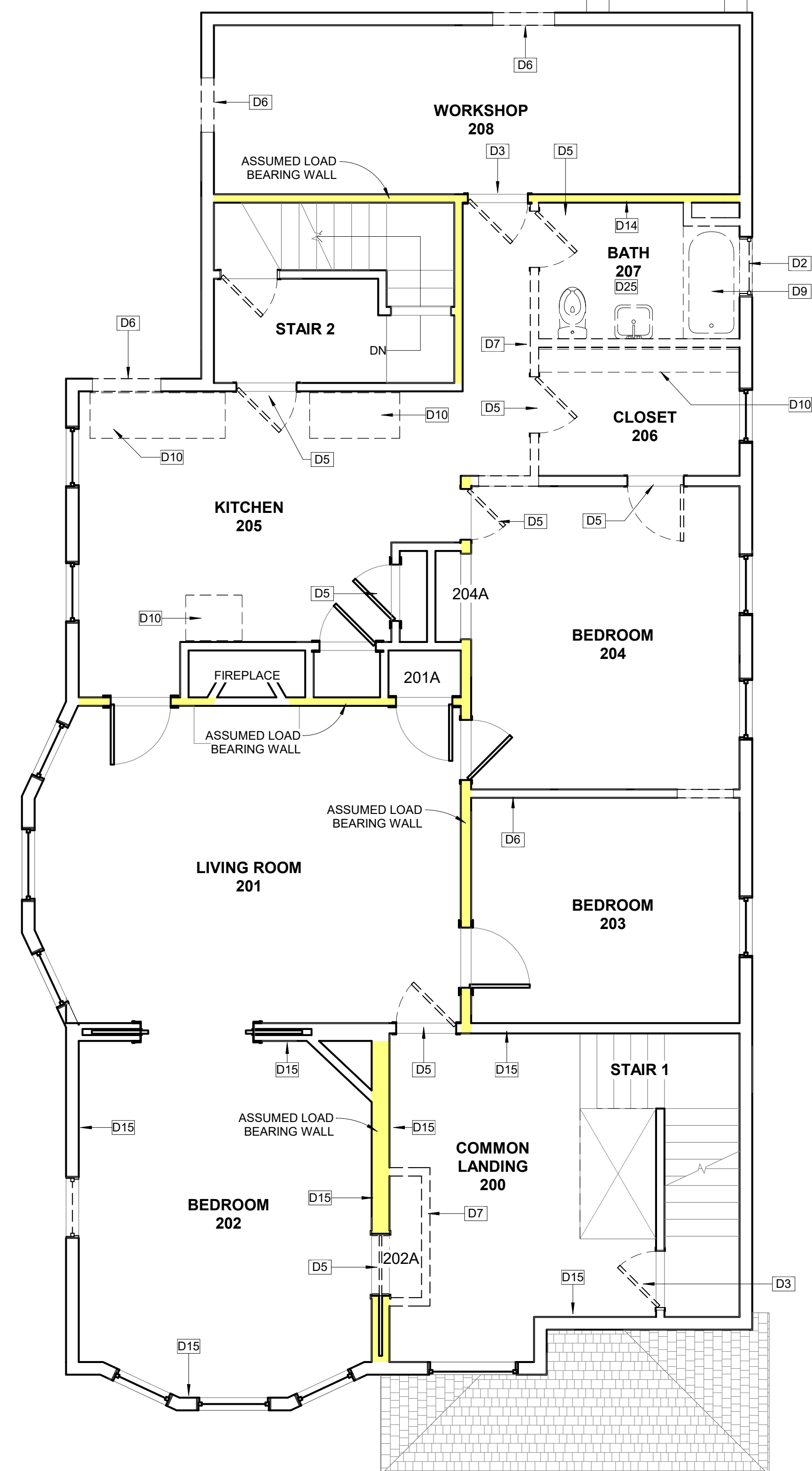




DEMOLITION KEYNOTES	
NO.	NOTE
D2	REMOVE WINDOW, FRAME, WEIGHT POCKET AND INTERIOR TRIM. RE-FRAME FOR NEW OPENING
D3	REMOVE DOOR, LEAVE FRAME AND TRIM IN PLACE. SALVAGE DOOR FOR RE-USE
D5	REMOVE DOOR, FRAME AND TRIM. DISCARD
D6	DEMO WALL AS REQUIRED FOR NEW DOOR/WINDOW OPENING
D7	DEMO WALL AS INDICATED
D8	REMOVE STAIR
D9	REMOVE PLUMBING FIXTURE AND ASSOCIATED PIPING BACK TO SOURCE
D10	REMOVE BUILT-IN CASEWORK/CABINETY
D14	REMOVE PANELLING FROM WALL
D15	REMOVE WALLPAPER
D24	REMOVE SHEET VINYL AND WOOD UNDERLAYMENT
D25	REMOVE VINYL TILES

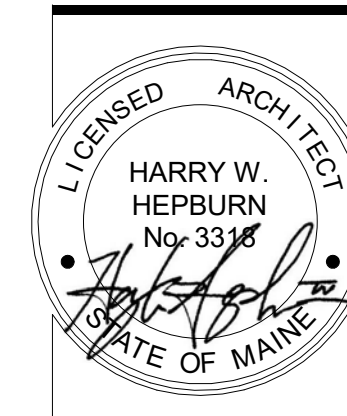
REMOVE ALL WINDOWS AND PREPARE FOR REPLACEMENT UNLESS NOTED OTHERWISE



3 SECOND FLOOR DEMO PLAN
1/4" = 1'-0"

2 FIRST FLOOR DEMO PLAN
1/4" = 1'-0"

1 DEMO PLAN - Basement
1/4" = 1'-0"



ELLA Housing
77 Congress Street - Front

BRI BURN
architecture for life
28 Maple St. Suite 202 Portland, ME 04101
207-774-6622

CONSULTANTS:

REVISIONS:		
No.	Name	Date

ISSUED FOR PERMITTING

ISSUED: 10/13/2017
PROJECT No: 1706
DRAWN BY: LG
CHECKED BY: HH
SHEET TITLE:
DEMOLITION PLANS

A-D101