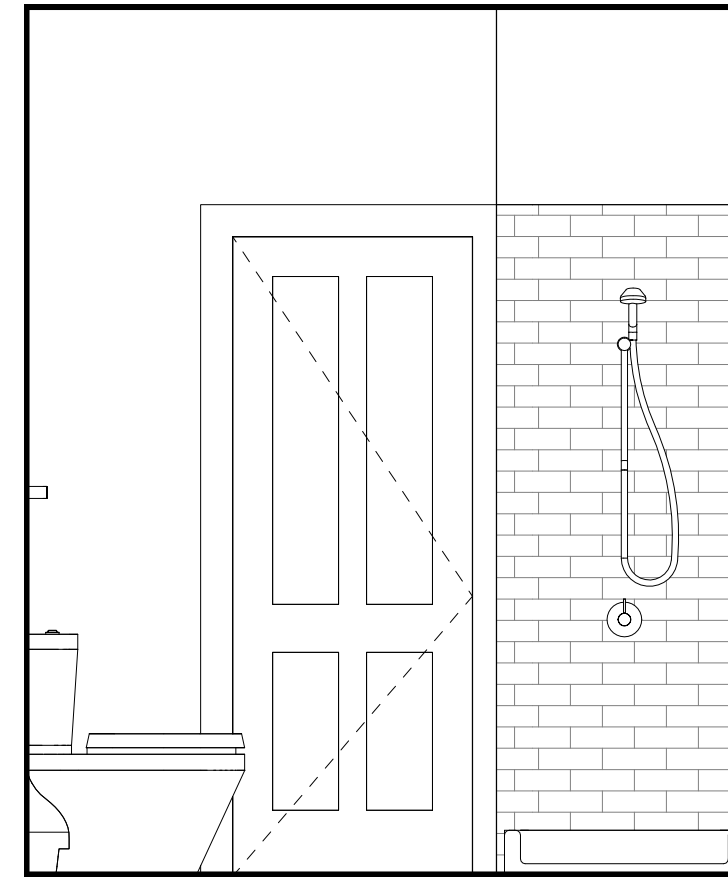
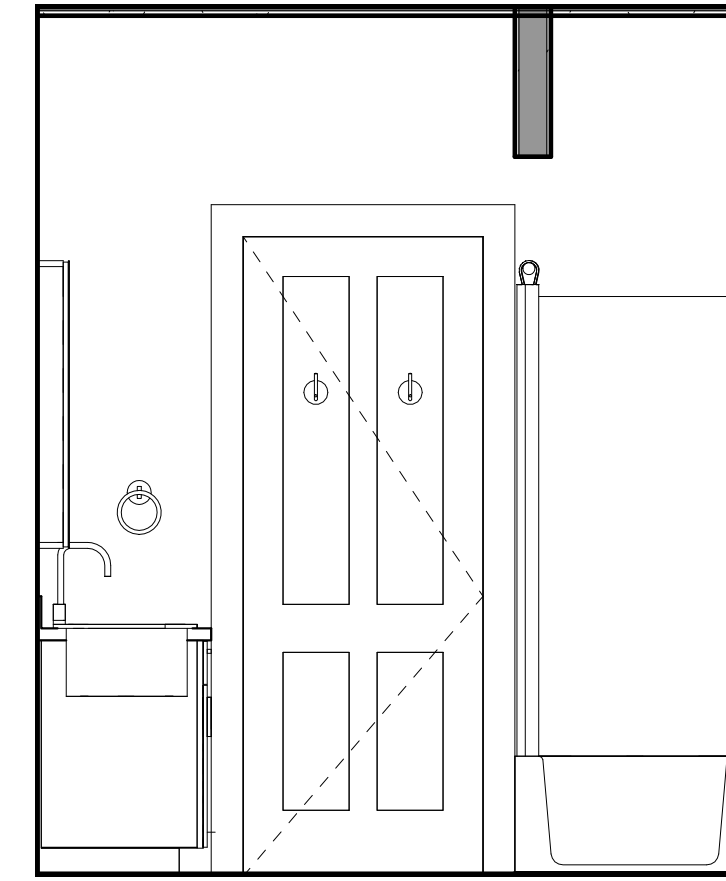


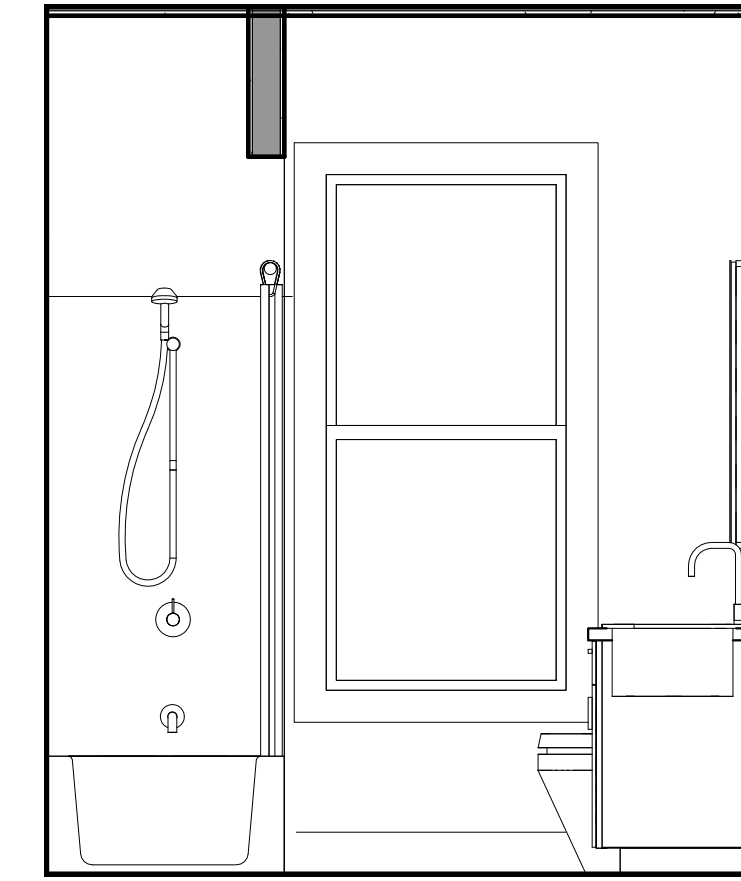
⑩ UNIT 1 & 2 MASTER BATHROOM SOUTH ELEVATION
1/2" = 1'-0"



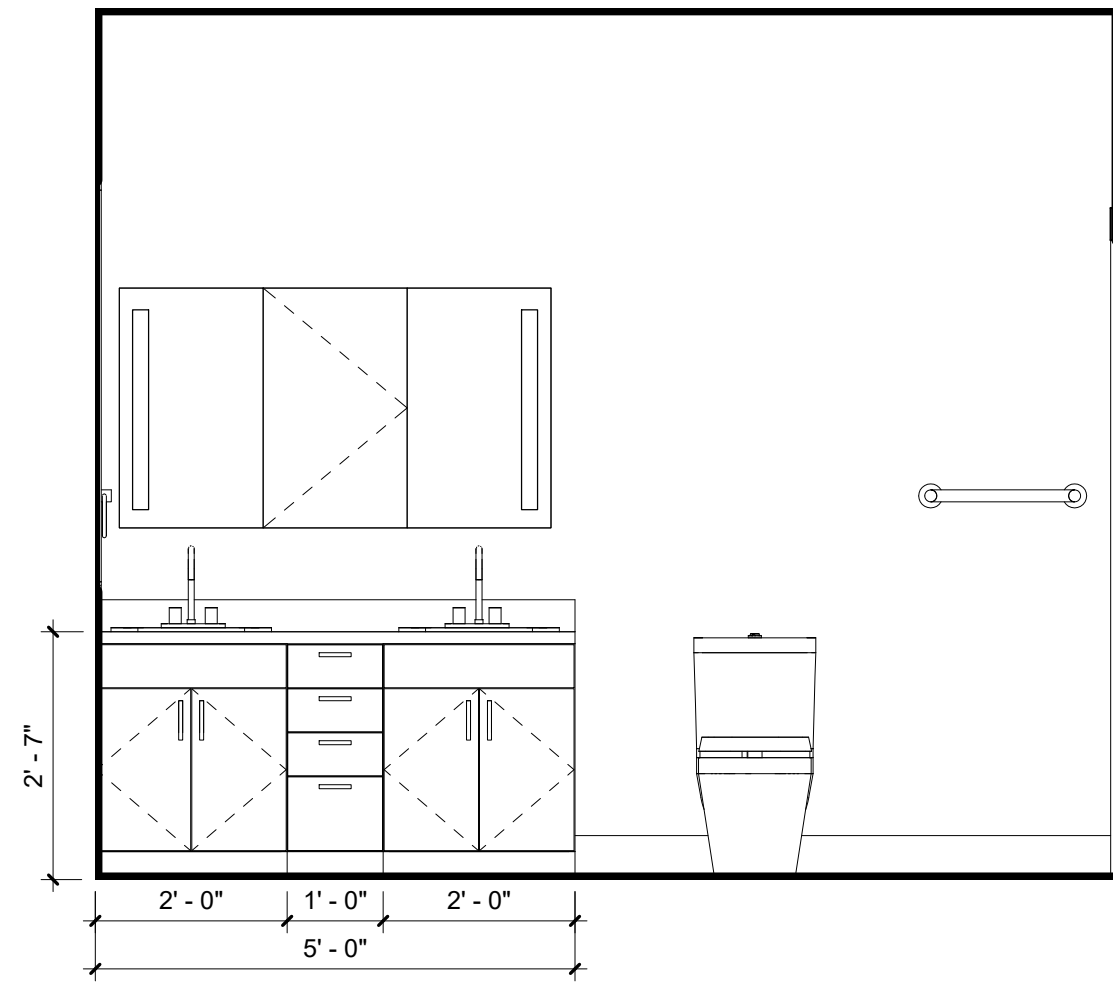
⑨ UNIT 1 & 2 MASTER BATHROOM NORTH ELEVATION
1/2" = 1'-0"



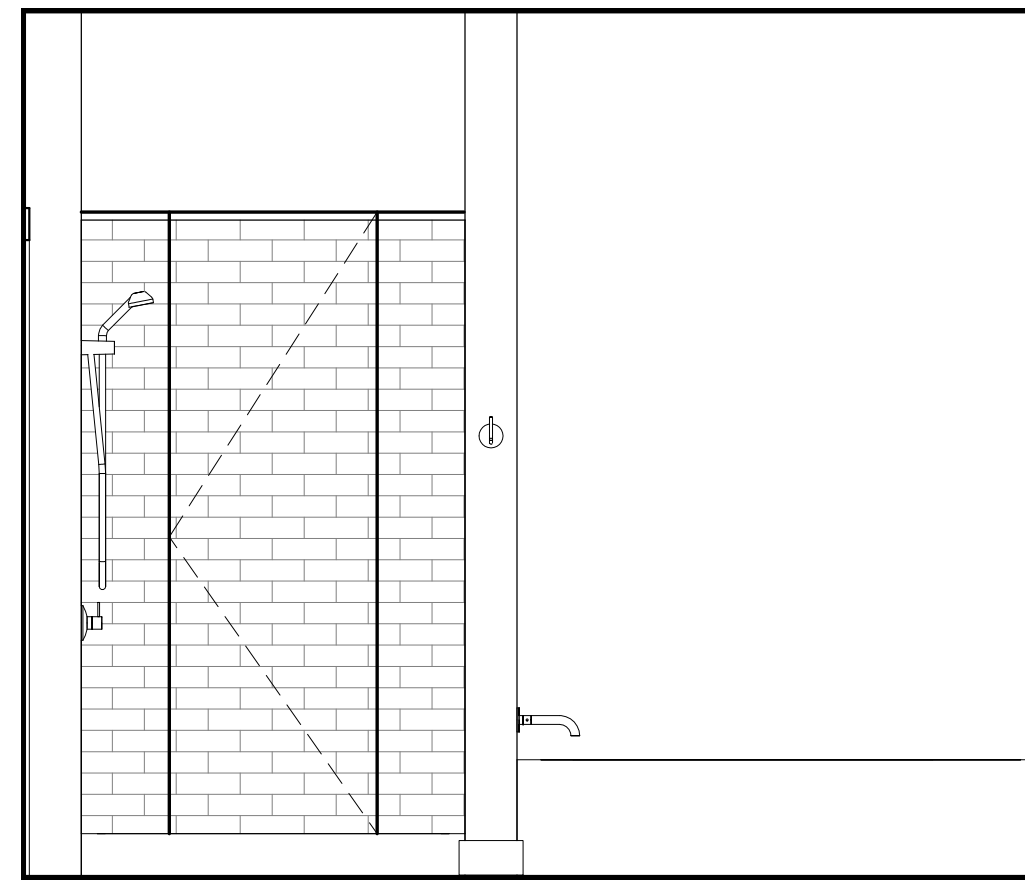
⑧ UNIT 1 & 2 BATHROOM SOUTH ELEVATION
1/2" = 1'-0"



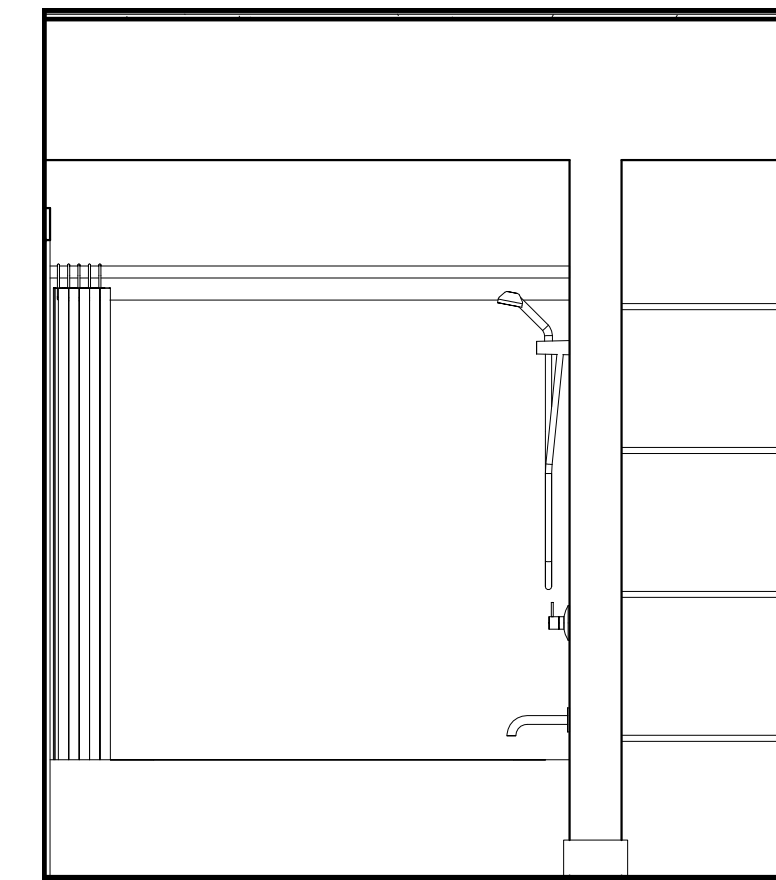
⑦ UNIT 1 & 2 BATHROOM NORTH ELEVATION
1/2" = 1'-0"



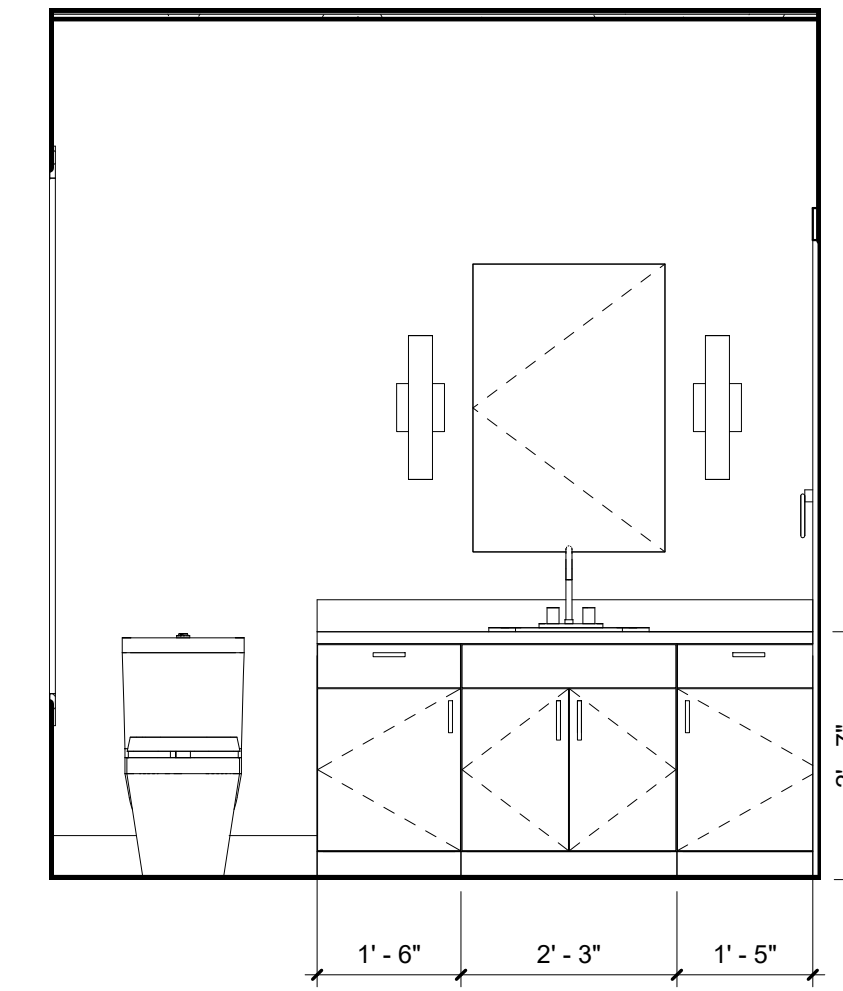
⑥ UNIT 1 & 2 MASTER BATHROOM WEST ELEVATION
1/2" = 1'-0"



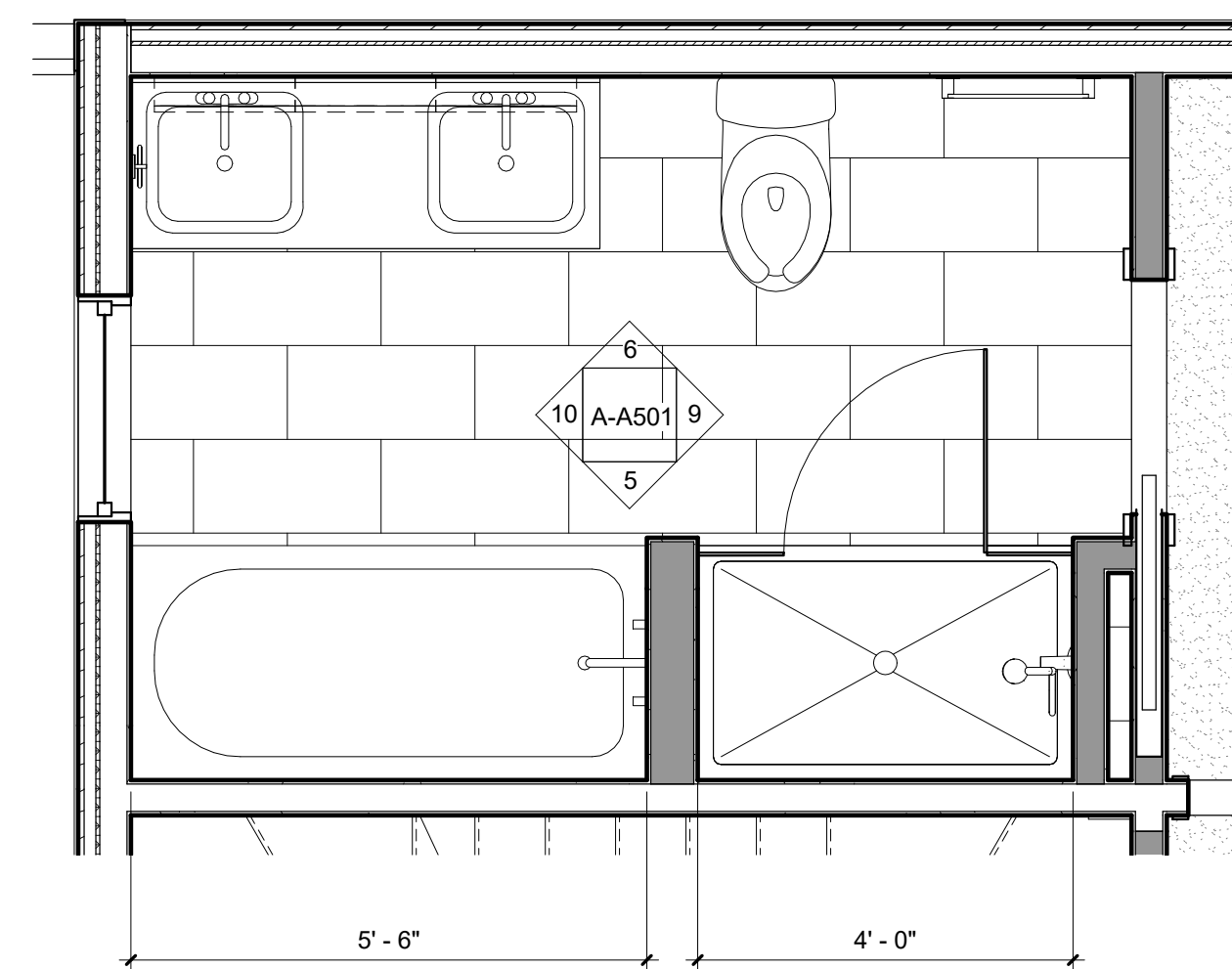
⑤ UNIT 1 & 2 MASTER BATHROOM EAST ELEVATION
1/2" = 1'-0"



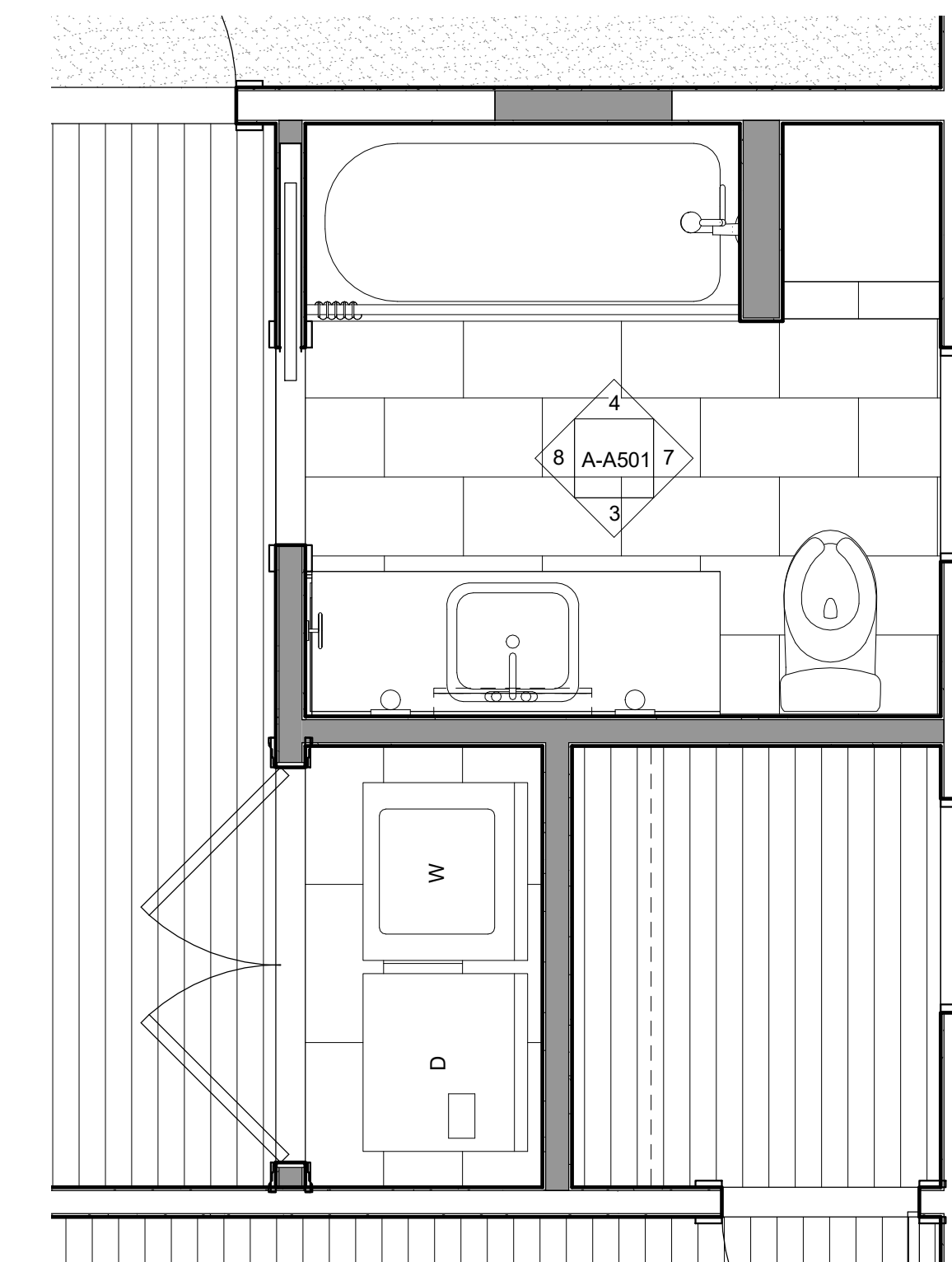
④ UNIT 1 & 2 BATHROOM WEST ELEVATION
1/2" = 1'-0"



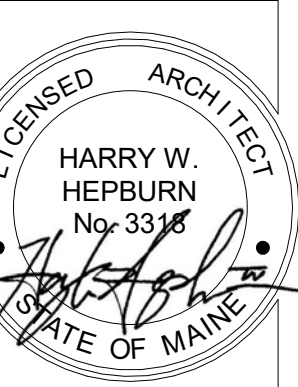
③ UNIT 1 & 2 BATHROOM EAST ELEVATION
1/2" = 1'-0"



② UNIT 1 & 2 MASTER BATHROOM ENLARGED PLAN
1/2" = 1'-0"



① UNIT 1 & 2 BATHROOM ENLARGED PLAN
1/2" = 1'-0"



ELLA Housing
77 Congress Street - Front

BRI BURN
architecture for life
29 Maple St. Suite 202 Portland, ME 04101
207.774.6422

CONSULTANTS:

REVISIONS:

No.	Name	Date

ISSUED FOR PERMITTING

ISSUED: 10/13/2017

PROJECT No: 1706

DRAWN BY: LG

CHECKED BY: -

SHEET TITLE:
INTERIOR ELEVATIONS - UNITS 1 & 2

A-A501