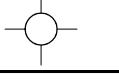
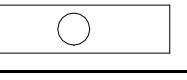
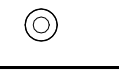
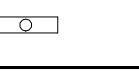
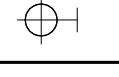
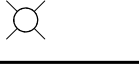
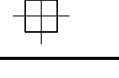



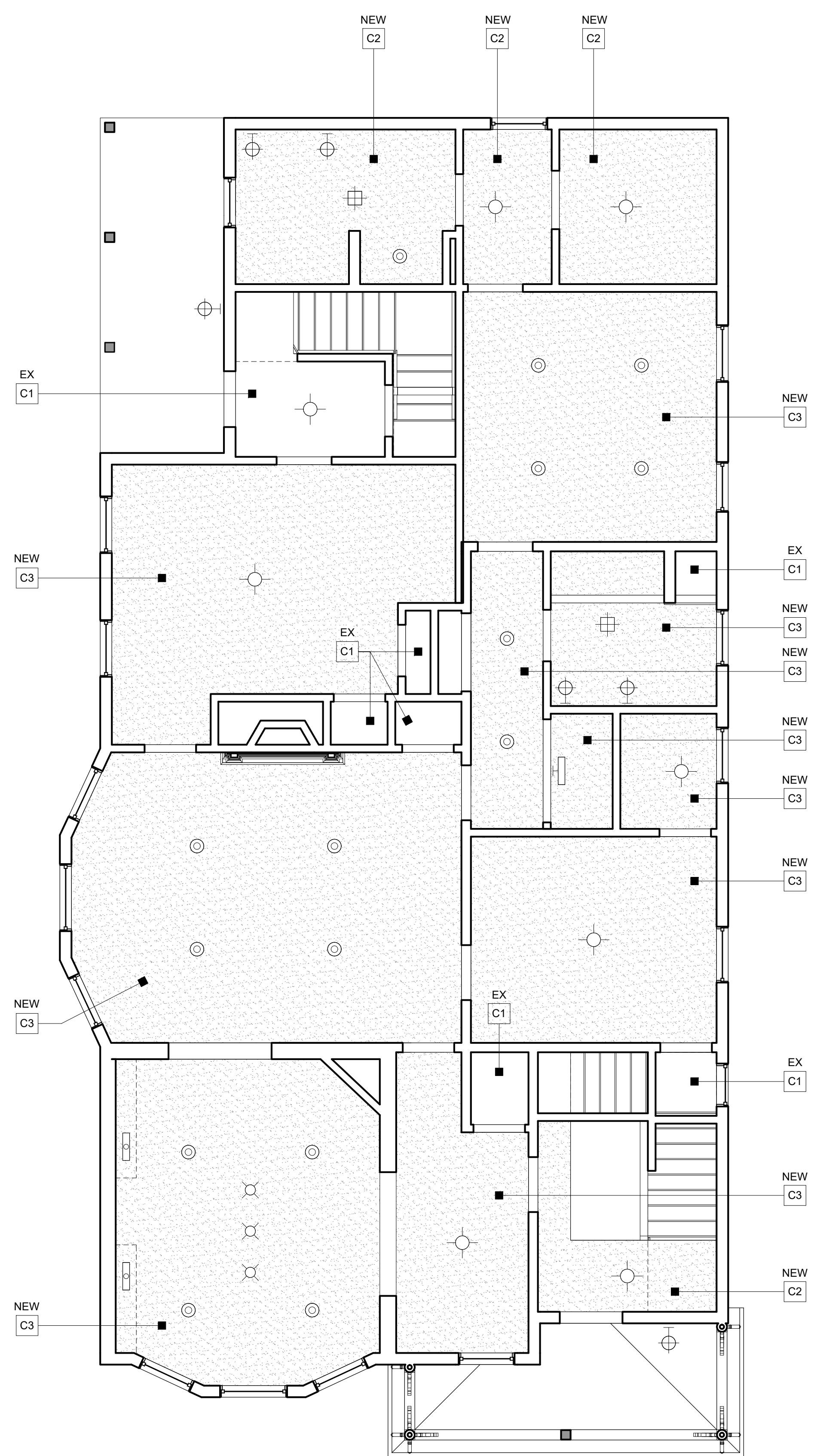


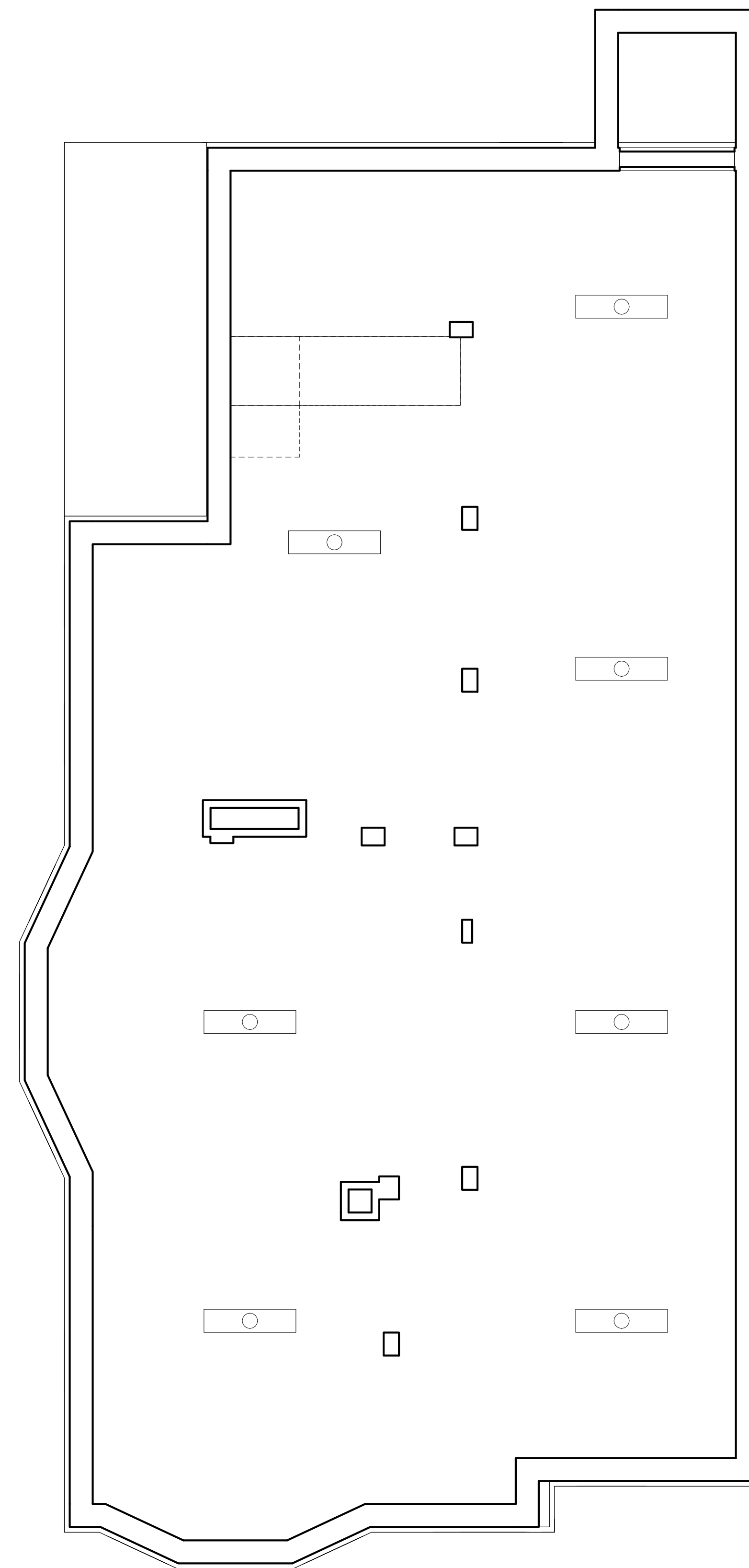
**FINISH LEGEND**

- WALL
- W1 PLASTER
  - W2 PLASTER + PAINTED WALLPAPER
  - W3 GYPSUM WALL BOARD
  - W4 PAINTED WOOD WAINSCOTT
  - W5 CERAMIC TILE
- CEILING
- C1 PLASTER
  - C2 GYPSUM WALL BOARD ON STRAPPING
  - C3 GYPSUM WALL BOARD ON FURRING & SOUND ISOLATION CLIPS
- FLOOR
- F1 CLEAR FINISH HARDWOOD
  - F2 PAINTED HARDWOOD
  - F3 CLEAR FINISH SOFTWOOD
  - F4 PAINTED SOFTWOOD
  - F5 PORCELAIN TILE
  - F6 CARPET
  - F7 LAMINATE
  - F8 CONCRETE

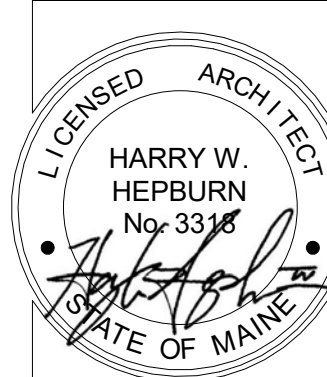
LIGHTING SYMBOL LEGEND			
	SURFACE MOUNTED LIGHT FIXTURE		4' SURFACE MOUNTED FLUORESCENT LIGHT FIXTURE
	RECESSED LIGHT FIXTURE		UNDER-CABINET LIGHT FIXTURE
	WALL MOUNTED LIGHT FIXTURE		PENDANT LIGHT FIXTURE
	EXHAUST FAN/LIGHT		WALL MOUNTED STRIP LIGHT
	GARAGE DOOR OPENER		CEILING FAN/LIGHT



2 FIRST FLOOR REFLECTED CEILING PLAN  
1/4" = 1'-0"



1 BASEMENT REFLECTED CEILING PLAN  
1/4" = 1'-0"



**ELLA Housing**  
77 Congress Street - Front



**CONSULTANTS:**

**REVISIONS:**

No.	Name	Date

**ISSUED FOR PERMITTING**

ISSUED: 10/13/2017  
 PROJECT No: 1706  
 DRAWN BY: RJP  
 CHECKED BY: HH

SHEET TITLE:  
 REFLECTED CEILING PLANS

**A-A111**