

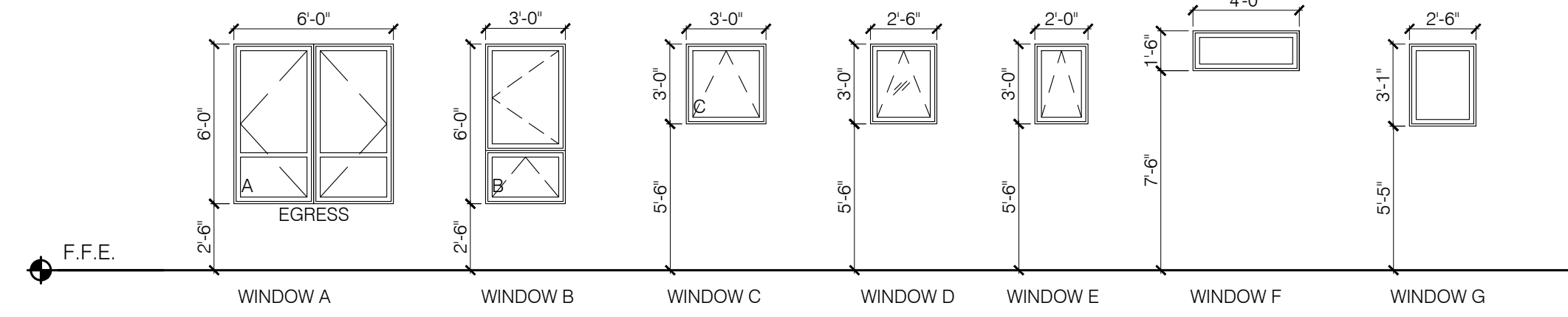
WINDOW SCHEDULE				
TYPE	SIZE (ROUGH OPENING)	MATERIAL	OPERATION	NOTES
A	6'-0" X 6'-0"	-	CASEMENT + AWNING	1,3
B	3'-0" X 6'-0"	-	CASEMENT + AWNING	1,3
C	3'-0" X 3'-0"	-	AWNING	1,3
D	2'-6" X 3'-0"	-	AWNING	1,3
E	2'-0" X 3'-0"	-	AWNING	1,3
F	1'-6" X 2'-0"	-	FIXED	1,3

**WINDOW SCHEDULE NOTES:**

- ALL WINDOWS TO HAVE A MAXIMUM U-FACTOR OF 0.35
- WINDOWS LABELED "EGRESS WINDOW" IN PLAN MUST COMPLY WITH:
  - MIN AREA: 5.7SF
  - MIN HEIGHT: 24"
  - MIN WIDTH: 20"
- WINDOWS TP BE THERMALLY BROKEN
- SEE DOOR SCHEDULE

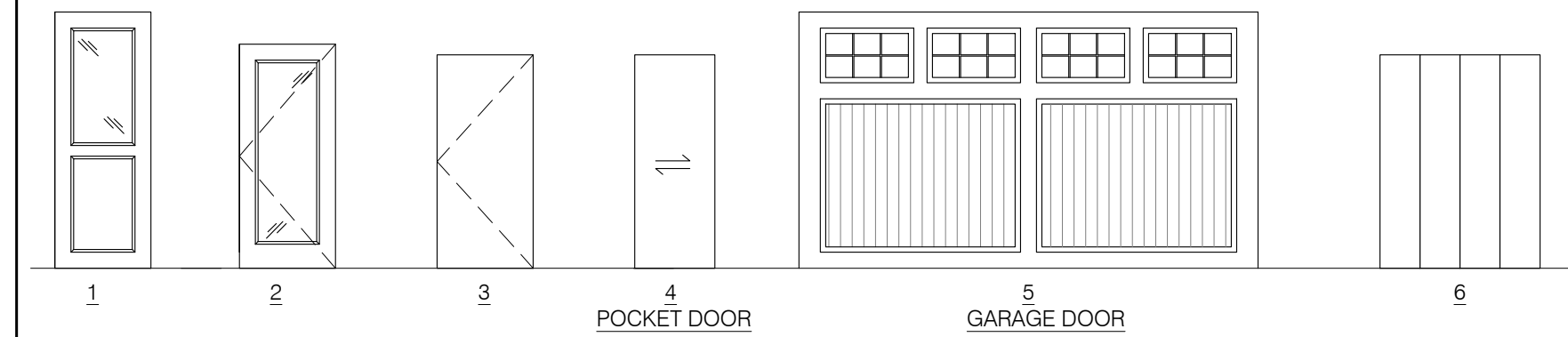
**WINDOW SPECIFICATIONS:**

- Size and window configuration. To be selected
- Color options. Preferred
- Factory Mulling Capability. 25
- Design Pressure Rating. 0.35 or lower
- U Factor. To be selected
- Material. To be selected
- Glazing Type. To be selected
- Hardware type. To be selected
- Exterior Washing Capability. Washing from interior preferred
- Warranty (Window & glazing units). 10 years
- Insect Screens. Standard Insect Screens



DOOR SCHEDULE									
DOOR #	FROM	TO	SIZE	DOOR MATERIAL	DOOR TYPE	DOOR RATING	FRAME	HARDWARE SET	NOTES
001	EXTERIOR	GARAGE	14'-0" X 8'-0"	WD	5	-	WD		4
002,003	EXTERIOR	VESTIBULE	3'-0" X 8'-0"	?	1	-	WD	01	1
004,005	GARAGE	VESTIBULE	3'-0" X 6'-8"	?	3	1HR	HM	02	
006,007	GARAGE	STORAGE	3'-0" X 6'-8"	SOLID CORE	3	-	HM	05	
101,201	LIVING	POWDER ROOM	2'-4" X 6'-8"	SOLID CORE	4	-	WD	07	
301,401	HALLWAY	BEDROOM 1	2'-6" X 6'-8"	SOLID CORE	3	-	WD	03	
302,402	HALLWAY	BEDROOM 2	2'-6" X 6'-8"	SOLID CORE	3	-	WD	03	
303,403	HALLWAY	BATH	2'-6" X 6'-8"	SOLID CORE	1	-	WD	03	
304,404	HALLWAY	W/D	5'-0" X 6'-8"	SOLID CORE	6	-	WD	06	
305,405	BEDROOM	CLOSET	6'-0" X 6'-8"	SOLID CORE	6	-	WD	06	
306,406	BEDROOM	CLOSET	6'-0" X 6'-8"	SOLID CORE	6	-	WD	06	
307,407	BEDROOM	BATH	2'-6" X 6'-8"	SOLID CORE	4	-	WD	07	3
501,601	HALLWAY	MASTER BEDROOM	2'-6" X 6'-8"	SOLID CORE	3	-	WD	03	
502,602	M. BEDROOM	M.BATH	2'-6" X 6'-8"	SOLID CORE	3	-	WD	03	
503,603	M. BEDROOM	CLOSET	2'-6" X 6'-8"	SOLID CORE	4	-	WD	07	
504,604	HALLWAY	DECK	3'-0" X 7'-0"	COMPOSITE	2	-	COMP	04	1

**DOOR TYPES**



**GENERAL DOOR SCHEDULE NOTES:**

- ALL DOOR HANDLES TO BE ADA COMPLIANT LEVER HANDLES.
- ALL INTERIOR DOOR HARDWARE FINISH TBD
- DOORS WITHIN UNITS FINISH TBD
- PROVIDE A COMMON SPACES KEY FOR TENANT ENTRANCES AND STORAGE AREA (ISSUED TO EACH TENANT)

**DOOR SCHEDULE NOTES:**

- SAFETY GLAZING
- INSULATED
- OPTIONAL
- MANUFACTURER TBD
- 

**HARDWARE SETS:**

- ENTRY DOORS: (3) HINGES, STRIKE, DOOR STOP, THRESHOLD, SWEEP, ENTRY LOCKSET, GASKET, LEVER, METAL PROTECTIVE TRIM, CLOSER, SINGLE CYLINDER DEADBOLT
- GARAGE DOORS: (3) HINGES, STRIKE, DOOR STOP, LEVER, ENTRY LOCKSET, CLOSER, SINGLE CYLINDER DEADBOLT
- BATH/BED DOORS: (3) HINGES, STRIKE, DOOR STOP, LEVER, BED/BATH LOCKSET
- PATIO DOORS: (3) HINGES, ESCUTCHEON PLATE, LEVER, DEADBOLT LOCKSET, THRESHOLD
- STORAGE DOORS: (3) HINGES, STRIKE, DOOR STOP, LEVER, STORAGE LOCKSET
- FOLDING DOORS: TRACK LENGTH, TOP PIVOTS, TOP PIVOT LOCKS, DOOR GUIDES, BOTTOM PIVOTS, BOTTOM PIVOT BRACKETS, TRACK STOPS, PANEL HINGES, PANEL ALIGNER, DOOR KNOBS
- POCKET DOOR: TRACK, COASTERS, DOOR GUIDE, DECORATIVE PULL

ISSUE DATE  
**5/8/17**  
SHEET SCALE  
3/8" = 1'-0"

**A**

**601**

DRAWN BY  
**AEW/KBS**  
NOT FOR CONSTRUCTION

SHEET TITLE  
**SCHEDULES**

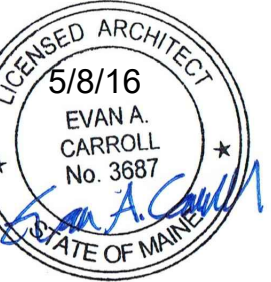
REVISIONS

1	-
2	-
3	-
4	-
5	-

PROJECT NO.  
**17002**

PROJECT NAME  
**5 MERRILL STREET  
PORTLAND, ME 04101**

PERMIT SET  
**NOT FOR CONSTRUCTION**



**Bild Architecture**  
PO Box 8235  
Portland, ME  
04104  
207.408.0168  
evan@bildarchitecture.com