

SECOND FLOOR FRAMING PLAN

Scale: 1/4" = 1'-0"

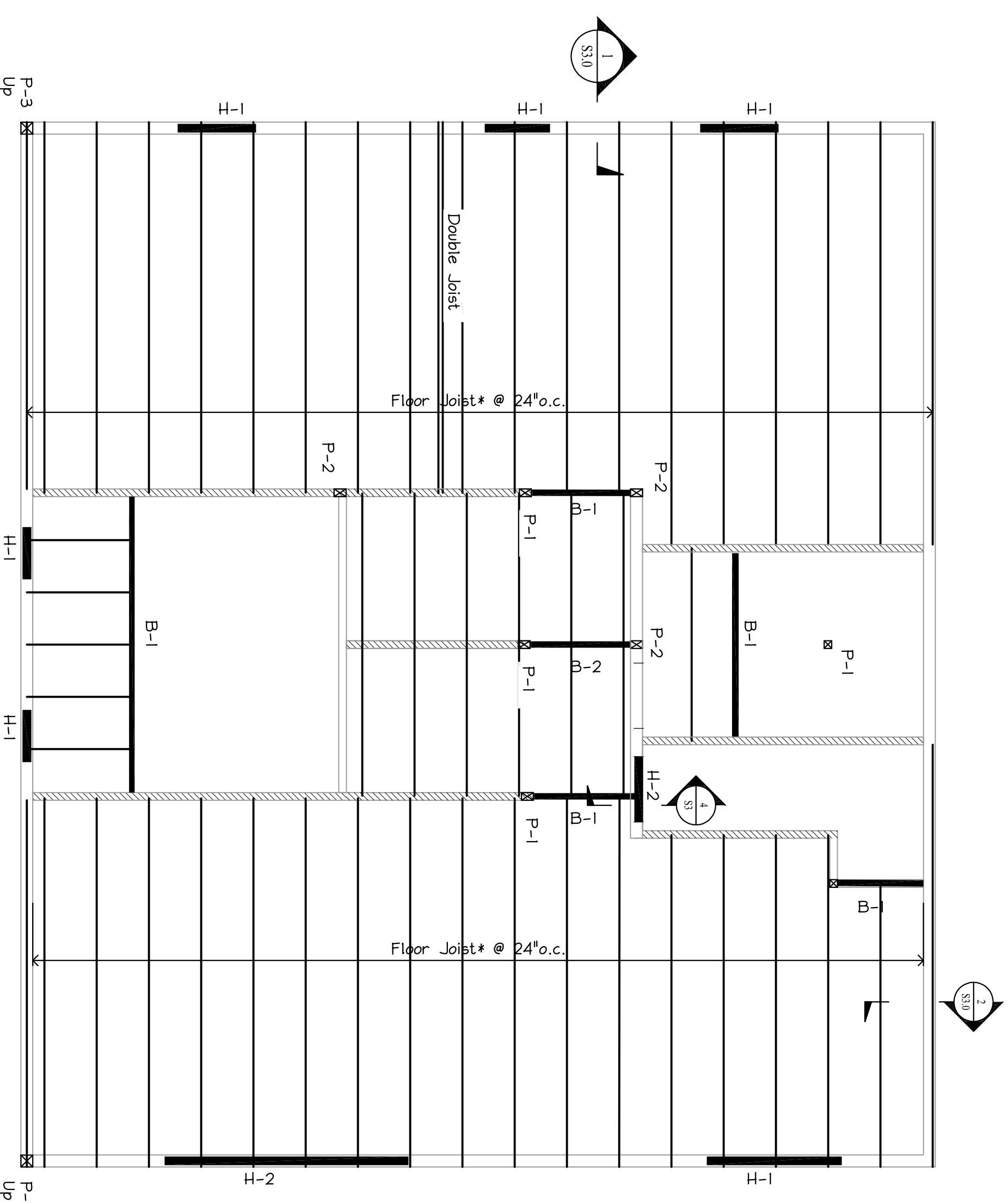
| HEADER SCHEDULE |                     |                     |                     |
|-----------------|---------------------|---------------------|---------------------|
| MARK            | DESCRIPTION         | JACK STUDS (NUMBER) | KING STUDS (NUMBER) |
| H-1             | (3) 2x10's          | (1) Studs           | (1) Studs           |
| H-2             | 5 1/2" x 9 1/4" LVL | (1) Studs           | (2) Studs           |
|                 |                     |                     |                     |
|                 |                     |                     |                     |

NOTES:

- All Headers Not Noted To Be (3) 2x10's

| BEAM SCHEDULE |                         |
|---------------|-------------------------|
| MARK          | DESCRIPTION             |
| B-1           | 1 3/4" x 9 1/4" LVL     |
| B-2           | (2) 1 3/4" x 9 1/4" LVL |
| B-3           | (3) 1 3/4" x 9 1/4" LVL |
| B-4           | (4) 1 3/4" x 9 1/4" LVL |

| POST SCHEDULE |                           |
|---------------|---------------------------|
| MARK          | DESCRIPTION               |
| P-1           | 3 1/2" x 5 1/2" PSL       |
| P-2           | 3 1/2" x 5 1/2" PSL       |
| P-3           | 5 1/2" x 5 1/2" P.T. Post |

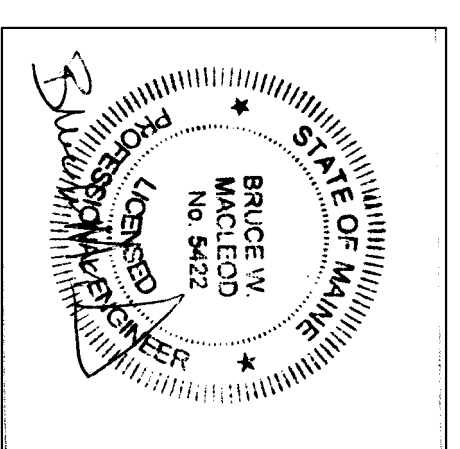


THIRD FLOOR FRAMING PLAN

Scale: 1/4" = 1'-0"

- \* Floor Joist Framing Options:
- Nordic Joist 9 1/2" N180 @ 24" o.c.
  - Open Joist OJ 9 1/2" (4x2 N180) @ 24" o.c.
  - 10" Deep Pre-Engineered Wood Trusses @ 24" o.c.

FOR CONSTRUCTION  
ISSUED  
6/08/16



**Macleod**  
Structural Engineers, Inc.  
90 Bridge Street, Suite 202, Westbrook, Maine 04092 207.839.0980  
5 Merrill Street  
Portland, Maine

TITLE: Floor & Roof Framing Plans  
DATE: 5/12/16  
SCALE: as noted

DRAWN BY: BHW  
DRAWING NUMBER: S-2.0