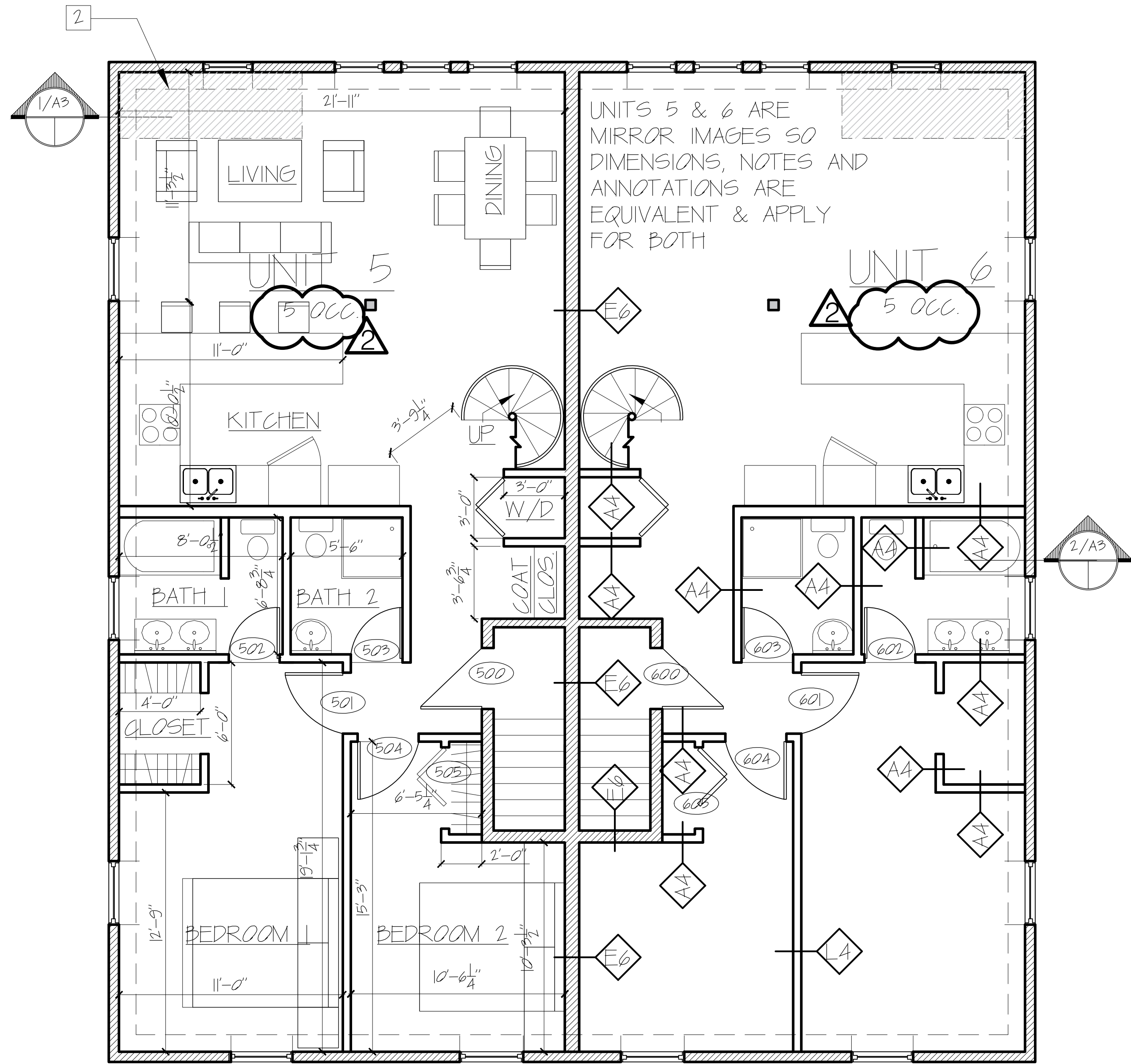
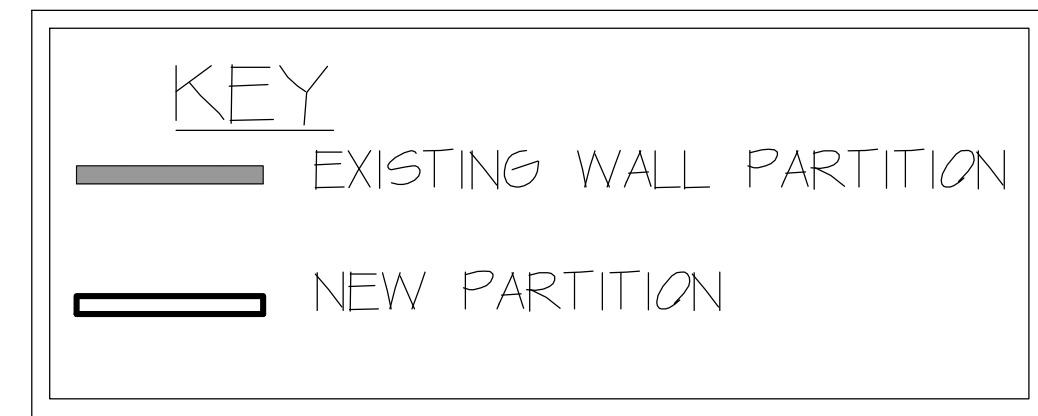


**GENERAL NOTES:**

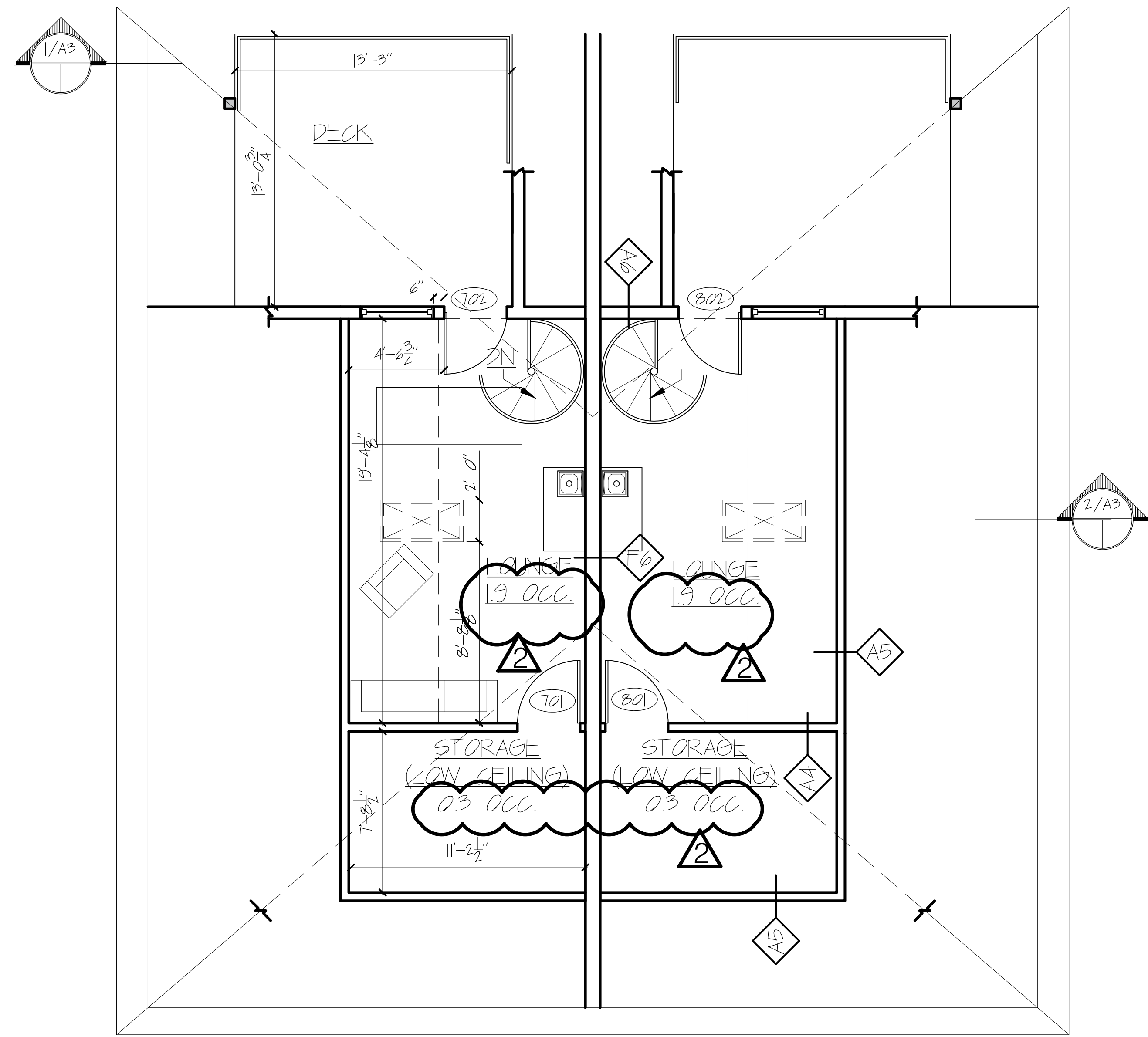
- A. PATCH AND REPAIR ANY DAMAGE CAUSED BY DEMOLITION TO MATCH ADJACENT FINISHES.
- B. CLEAN AND PREPARE SURFACES TO RECEIVE NEW FINISHES. PAINT ALL EXISTING AND NEW EXPOSED SURFACES INCLUDING GYPSUM WALLBOARD AT FLOORS AND CEILINGS, TRIM, RAILINGS, ETC.
- C. FINAL FINISHES TO BE SELECTED BY OWNER.
- D. PATCH FLOORS AT LOCATIONS WHERE EXISTING WALLS HAVE BEEN REMOVED ENSURE SUBFLOOR IS FLUSH AND LEVEL PRIOR TO INSTALLING FLOOR FINISHES.
- E. WHERE NEW WALLS OR INFILLS ABUT OR INTERSECT EXISTING WALLS, ALIGN NEW FINISH WITH EXISTING WALLS. ALIGN NEW FINISH WITH EXISTING FINISH AND FINISH JOINTS AT INTERSECTIONS SMOOTH AND CONTIGUOUS.
- F. WALL TYPES ON A6

**KEYNOTES:**

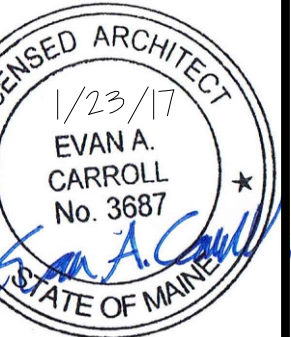
- 1. NEW CODE COMPLIANT STAIR RAILING - 1-1/2" RAILING 1-1/2" OFF WALL AND 3/8" ABOVE STAIR SLOPE
- 2. AREA OF FLOOR INFILL FROM REMOVED STAIR
- 3. CONCRETE BULKHEAD
- 4. MECHANICAL VENTILATION AS REQUIRED BY CODE



3 THIRD FLOOR  
SCALE: 3/16" = 1'-0"



4 LOFT PLAN  
SCALE: 3/16" = 1'-0"



REVISIONS

1	1/23/17
2	2/17/17
3	
4	
5	