


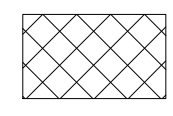

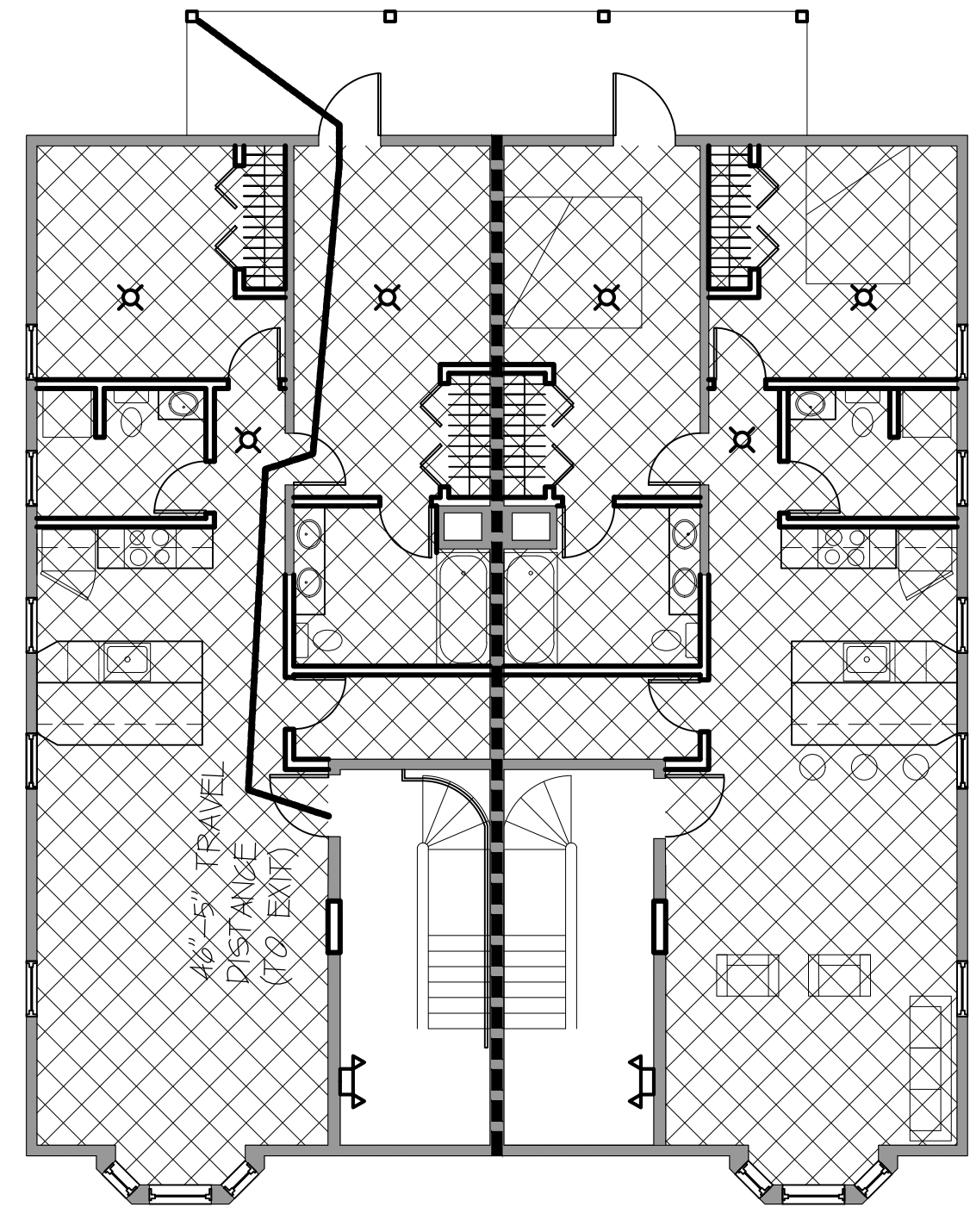
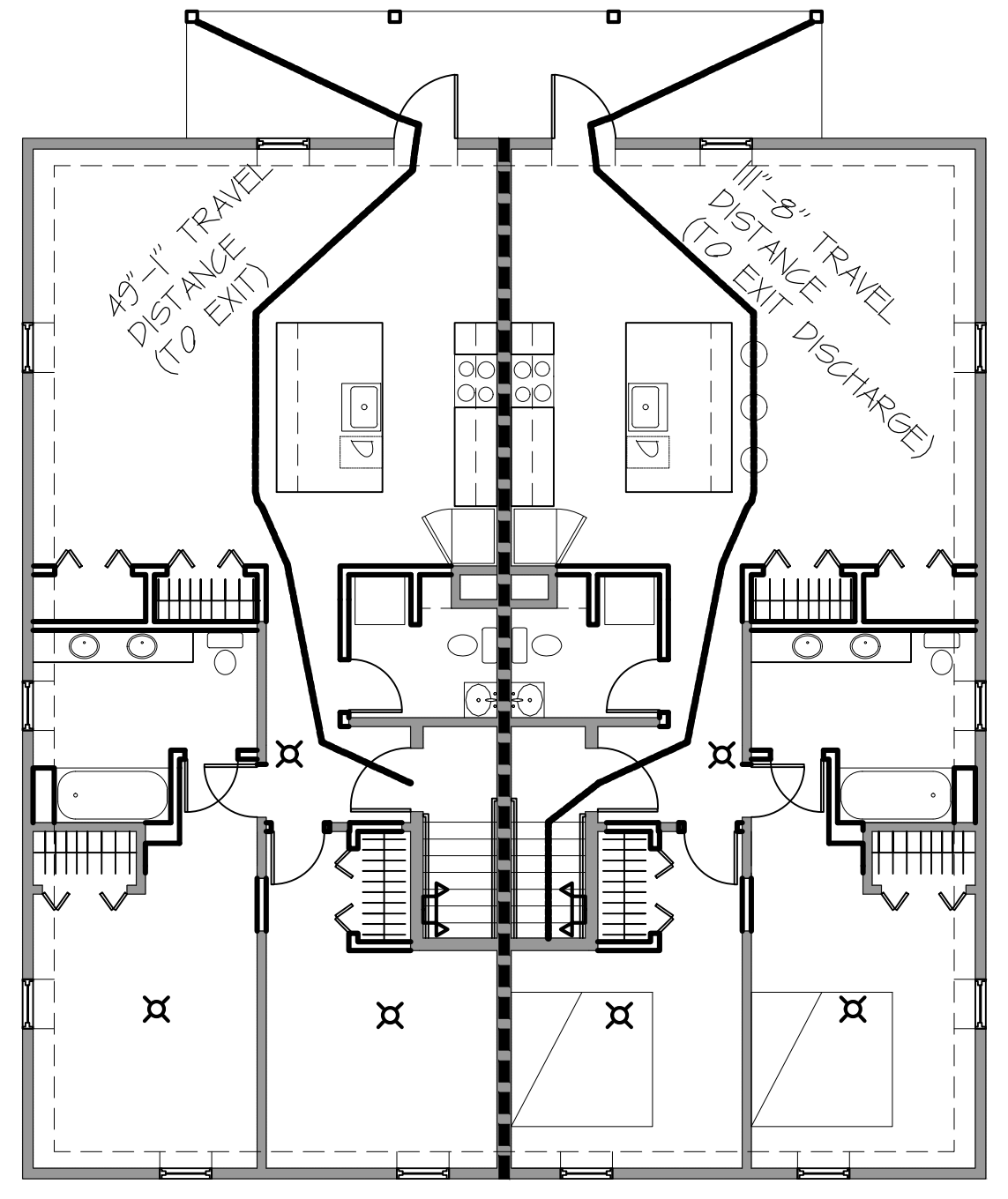


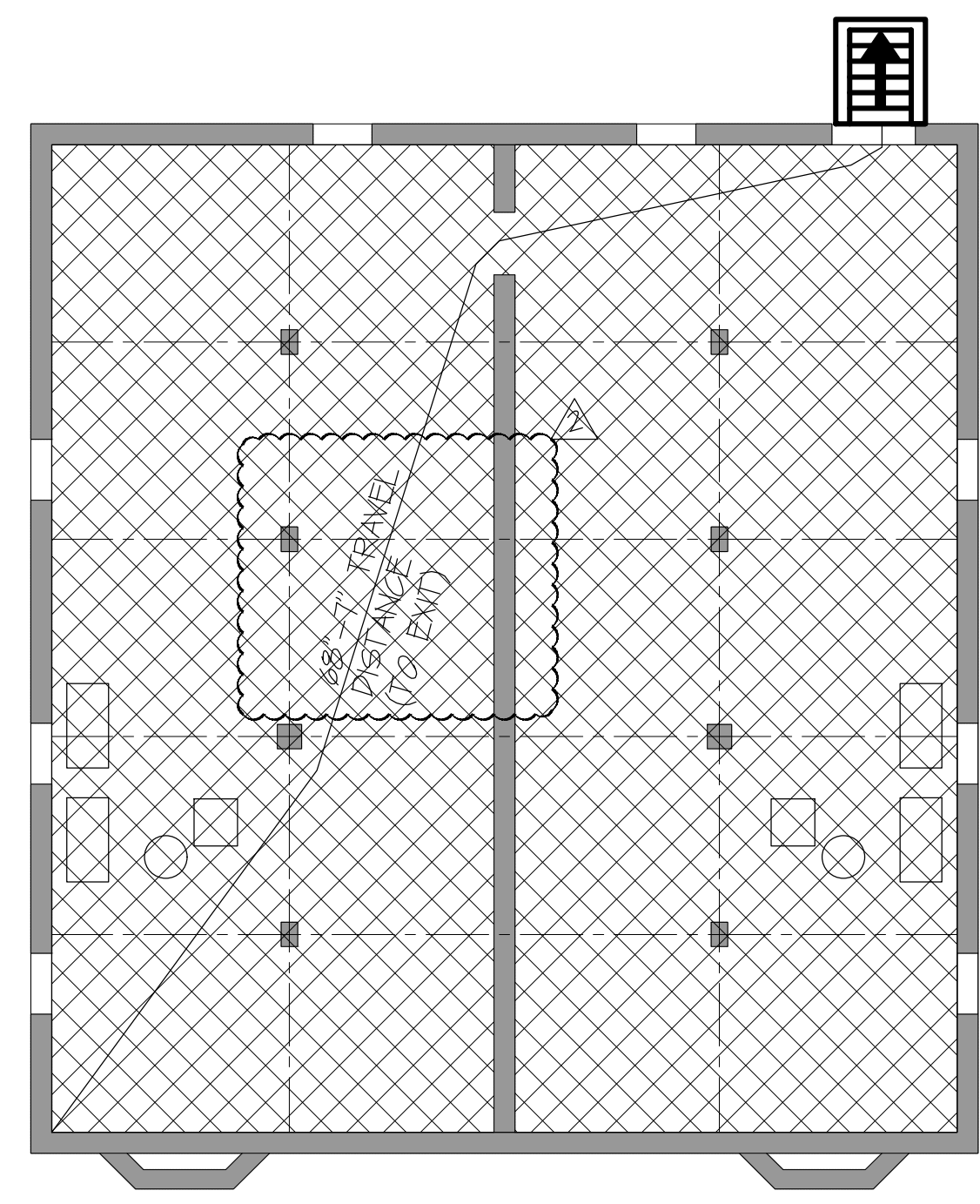
KEY	
	EMERGENCY LIGHTING
	EXIT DISCHARGE
	SMOKE DETECTOR
	PROPOSED 1 HR RATED CEILING ASSEMBLY
	EXISTING AND PROPOSED 1 HR WALLS (SEE WALL TYPES)



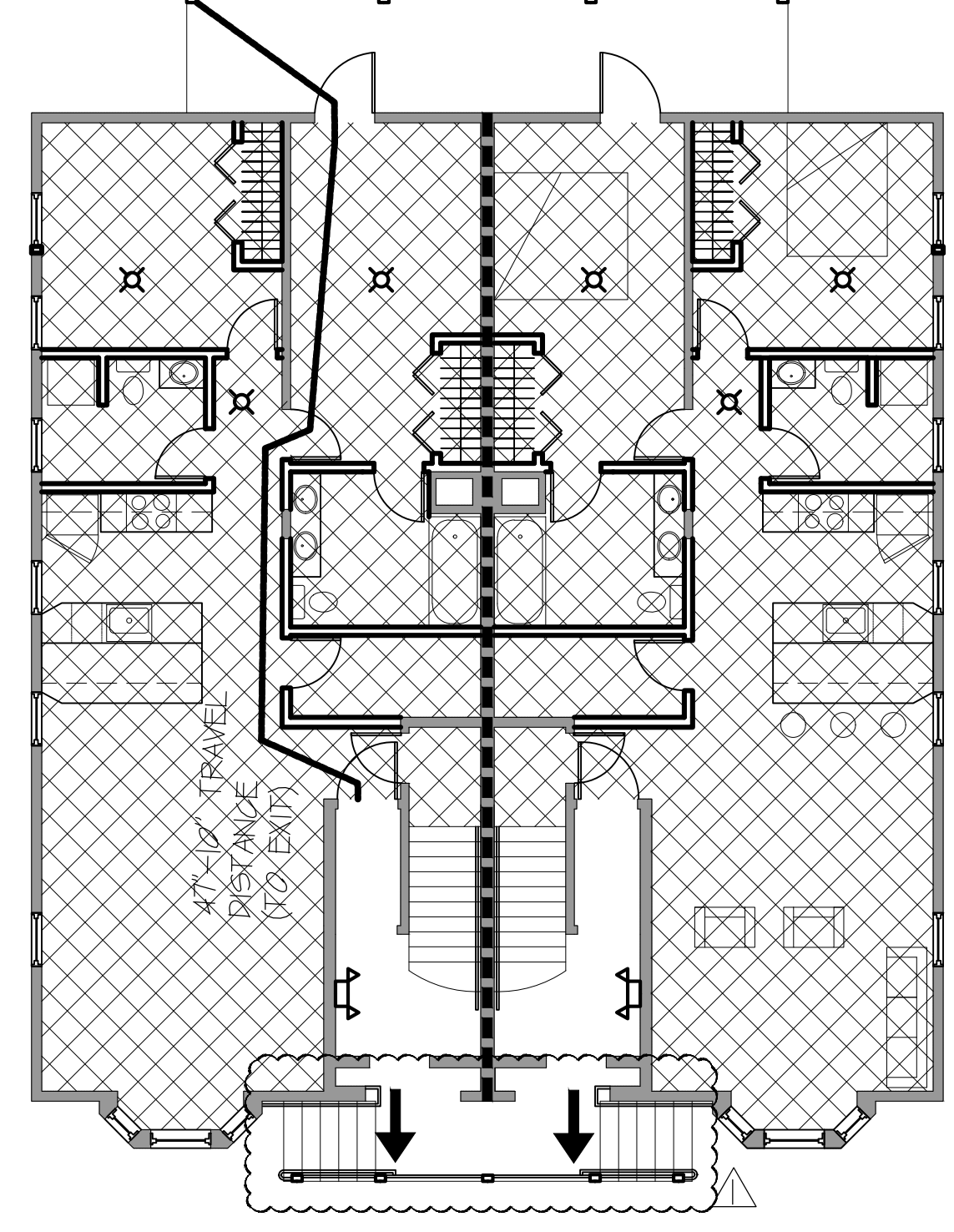
3 SECOND FLOOR CODE  
SCALE: 1/8" = 1'-0"



3 THIRD FLOOR CODE  
SCALE: 1/8" = 1'-0"



1 BASEMENT CODE  
SCALE: 1/8" = 1'-0"



2 FIRST FLOOR CODE  
SCALE: 1/8" = 1'-0"

ISSUE DATE  
4/15/16  
SHEET SCALE  
1/4" = 1'-0"

DRAWN BY  
EMW  
SHEET TITLE  
CODE REVIEW

PERMIT SET

REVISIONS  
1 | 16.6.16  
2 | 16.6.27  
3 |  
4 |  
5 |

PROJECT NO.  
15027  
PROJECT NAME  
15-17 MERRILL STREET  
PORTLAND, ME



Bild Architecture  
PO Box 8235  
Portland, ME  
04104  
207.408.0168  
evan@bildarchitecture.com