

FINISH SCHEDULE										
UNIT #	ROOM	FLOOR	WALLS				BASE	CEILING	RAILINGS & CASEWORK	NOTES
			N	S	E	W				
-	HALL 1	WD	-	-	-	-	-	-	-	1
-	HALL 2	WD	PNT	PNT	PNT	PNT	W	GYP		1
1 & 2	LIVING	WD	PNT	PNT	PNT	PNT	W	GYP		
1 & 2	DINING	WD	PNT	PNT	PNT	PNT	W	GYP		
1 & 2	KITCHEN	WD	PNT	PNT	PNT	PNT	W	GYP		2
1 & 2	BATH	CT	PNT	PNT	PNT	PNT		GYP		
1 & 2	1/2 BATH	CT	PNT	PNT	PNT	PNT		GYP		
1 & 2	BEDROOM 1	CPT	PNT	PNT	PNT	PNT	W	GYP		
1 & 2	BEDROOM 2	CPT	PNT	PNT	PNT	PNT	W	GYP		
1 & 2	CLOSET	WD	PNT	PNT	PNT	PNT	W	GYP		
-	HALL 3	WD	PNT	PNT	PNT	PNT	W			1
-	HALL 4	WD	PNT	PNT	PNT	PNT	W			1
3 & 4	LIVING	WD	PNT	PNT	PNT	PNT	W	GYP		
3 & 4	DINING	WD	PNT	PNT	PNT	PNT	W	GYP		
3 & 4	KITCHEN	WD	PNT	PNT	PNT	PNT	W	GYP		2
3 & 4	BATH	CT	PNT	PNT	PNT	PNT		GYP		
3 & 4	1/2 BATH	CT	PNT	PNT	PNT	PNT		GYP		
3 & 4	BEDROOM 1	CPT	PNT	PNT	PNT	PNT	W	GYP		
3 & 4	BEDROOM 2	CPT	PNT	PNT	PNT	PNT	W	GYP		
3 & 4	CLOSET	WD	PNT	PNT	PNT	PNT	W	GYP		
-	HALL 5	WD	PNT	PNT	PNT	PNT	W			1
-	HALL 6	WD	PNT	PNT	PNT	PNT	W			1
5 & 6	LIVING	WD	PNT	PNT	PNT	PNT	W	GYP		
5 & 6	DINING	WD	PNT	PNT	PNT	PNT	W	GYP		
5 & 6	KITCHEN	WD	PNT	PNT	PNT	PNT	W	GYP		2
5 & 6	BATH	CT	PNT	PNT	PNT	PNT		GYP		
5 & 6	1/2 BATH	CT	PNT	PNT	PNT	PNT		GYP		
5 & 6	BEDROOM 1	CPT	PNT	PNT	PNT	PNT	W	GYP		
5 & 6	BEDROOM 2	CPT	PNT	PNT	PNT	PNT	W	GYP		

**FINISH SCHEDULE NOTES:**

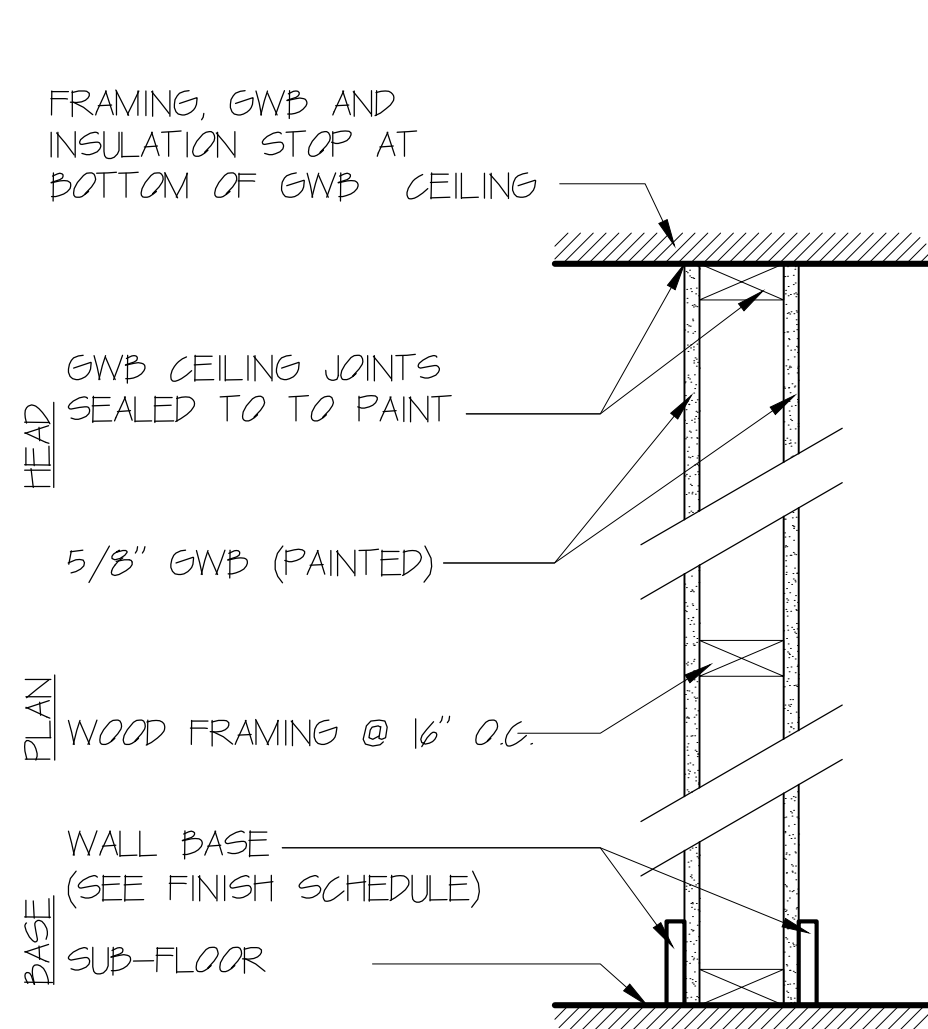
- REFINISH WOOD STAIRS IN HALLWAYS
- STONE COUNTERTOPS W/ 4" STONE BACK
- 5-1/4" WOOD TRIM

**LEGEND:**

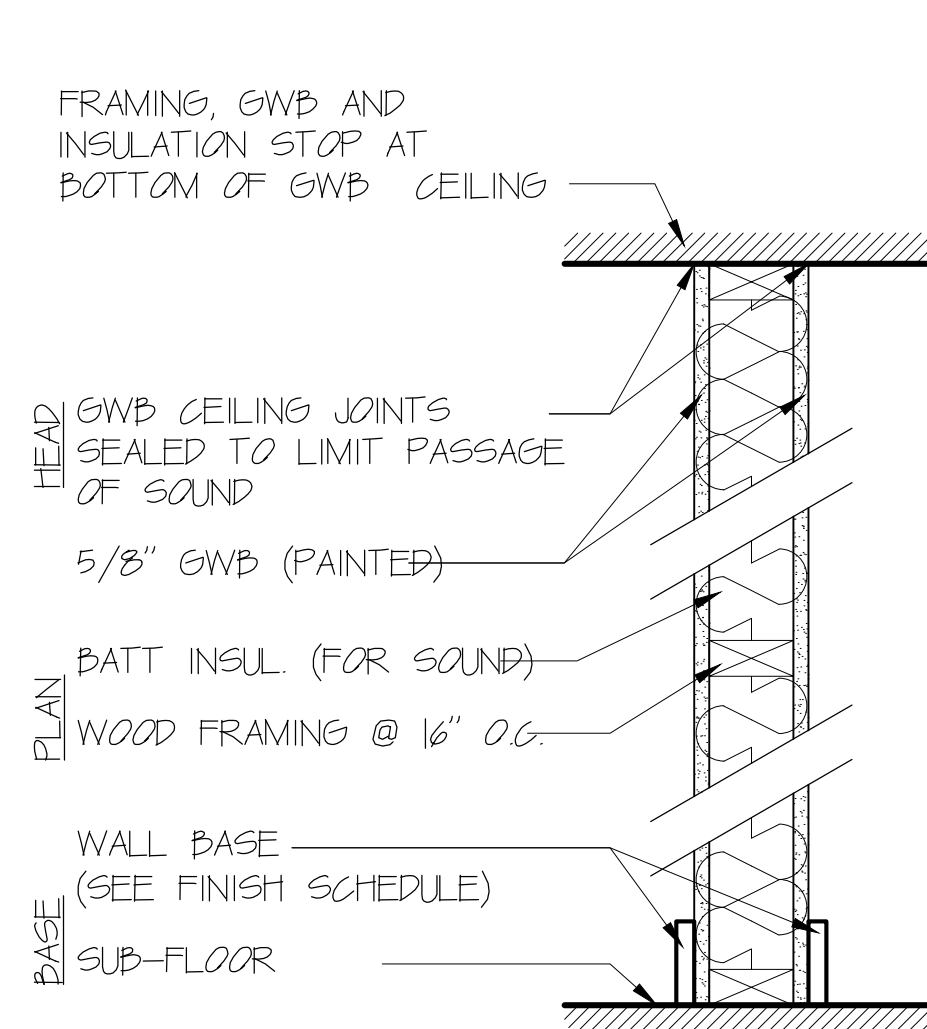
- PNT PAINT
- CPT CARPET
- WD ENGINEERED WOOD
- W WOOD BASE
- CT CUSTOM TILE
- EXIST EXISTING TO REMAIN
- GYP GYPSUM WALL BOARD

**PAINT SCHEDULE:**

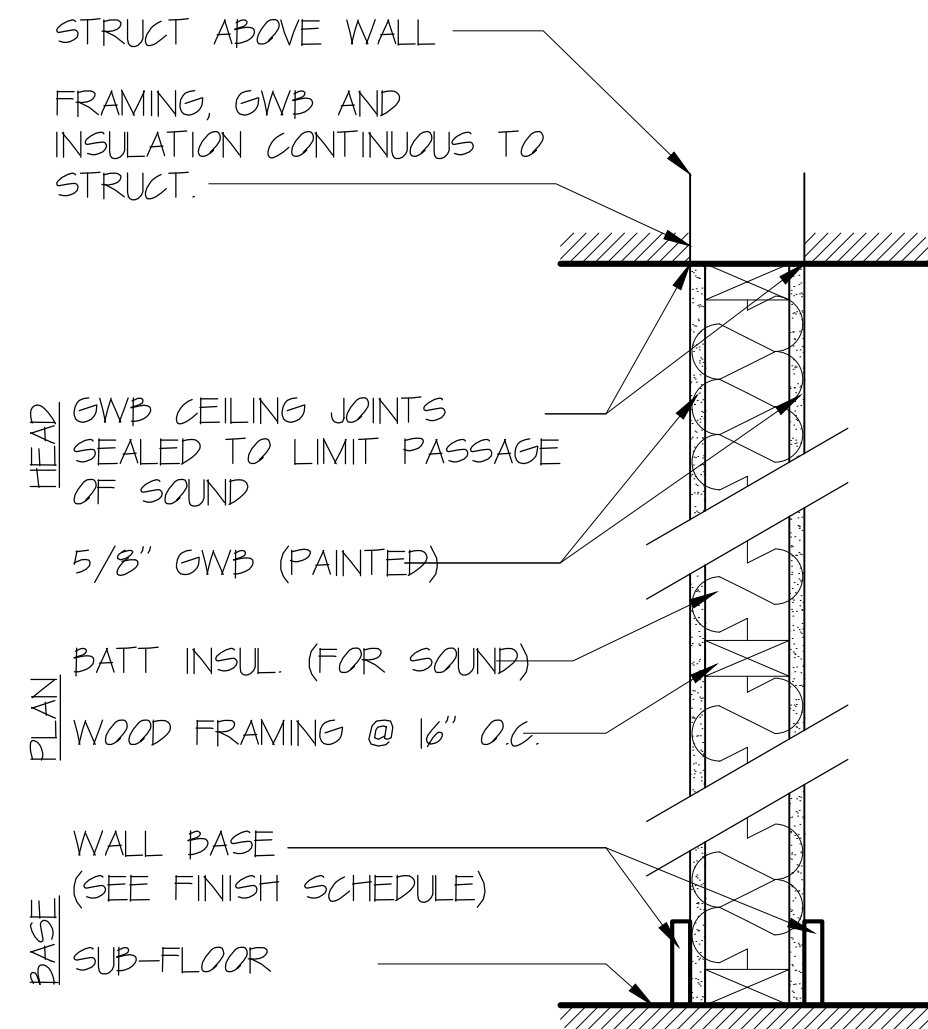
- PNT BENJAMIN MOORE COLOR TBD
- AURA ZERO VOC PAINT
- WALLS = EGGSHELL, SATIN FINISH
- CEILINGS = FLAT



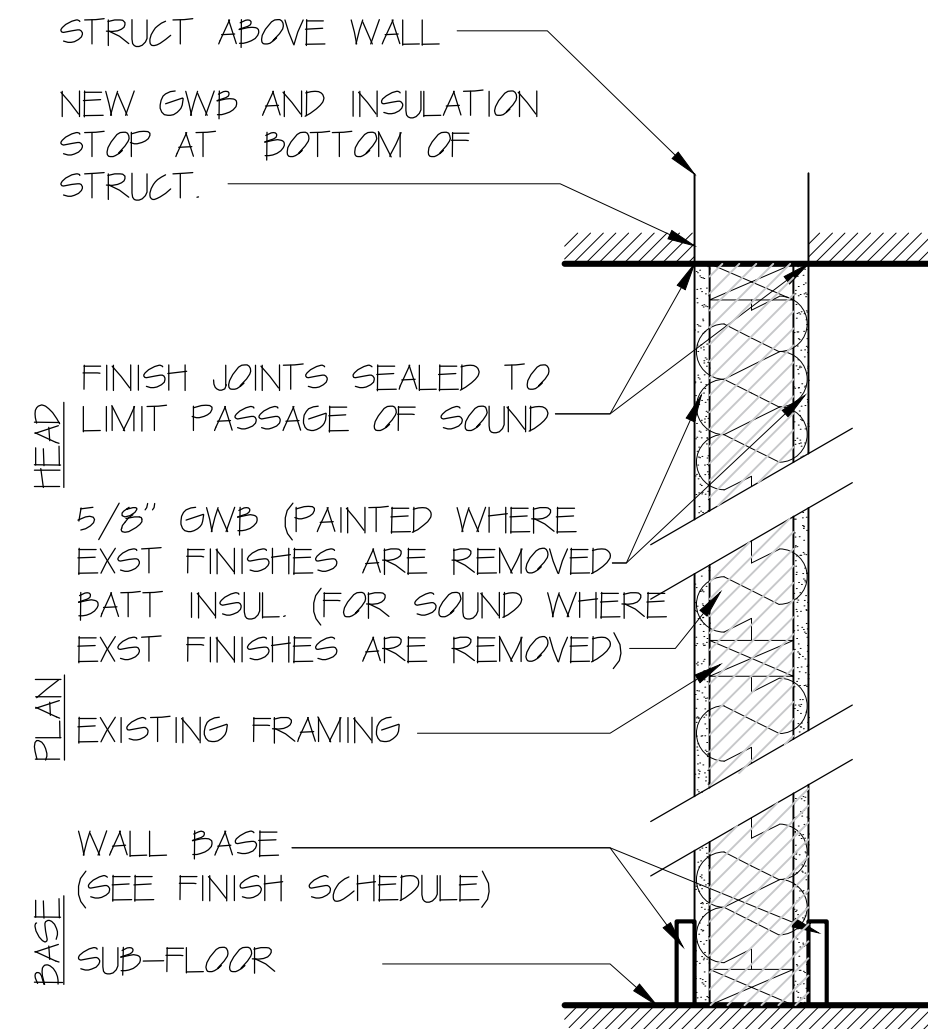
**4** 2X4 WOOD FRAMING WALL  
4 3/4" ACTUAL WALL THICKNESS



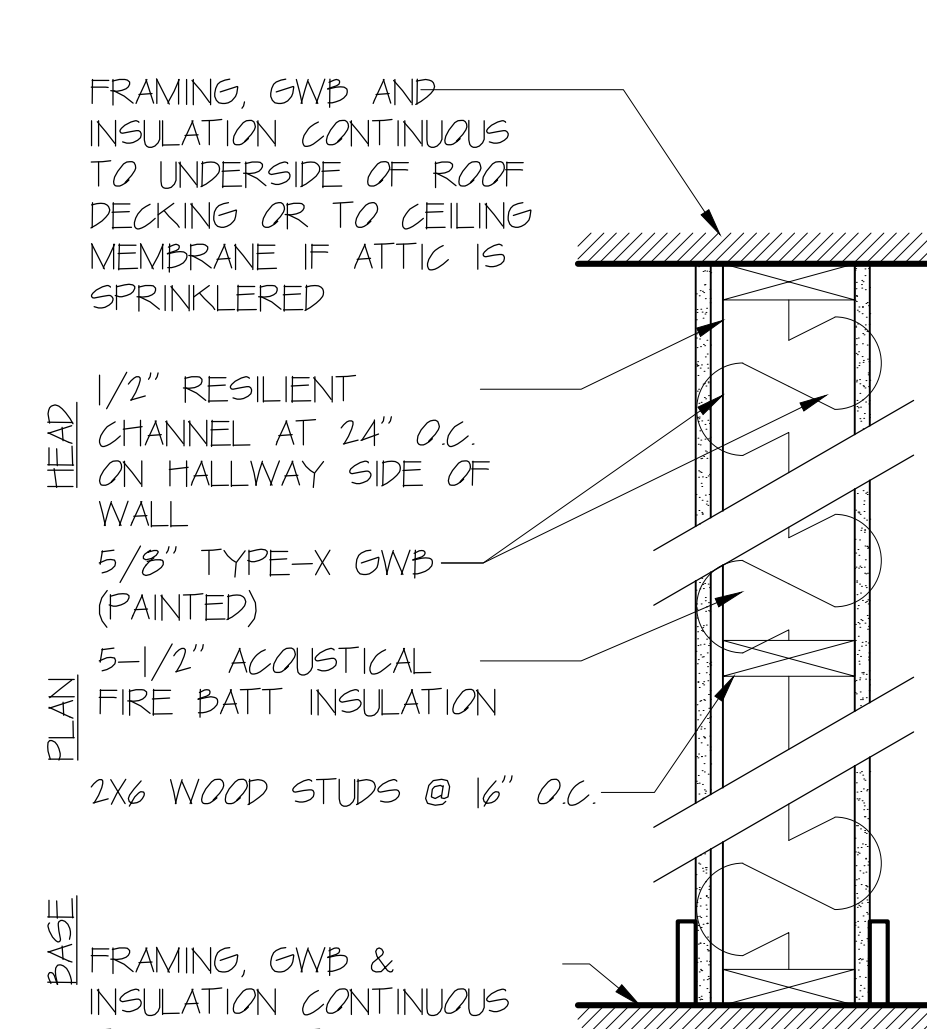
**A4** 2X4 WOOD FRAMING ACOUSTICAL WALL  
4 3/4" ACTUAL WALL THICKNESS



**L4** 2X4 WOOD FRAMING ACOUSTICAL AND LOAD BEARING WALL  
4 3/4" ACTUAL WALL THICKNESS



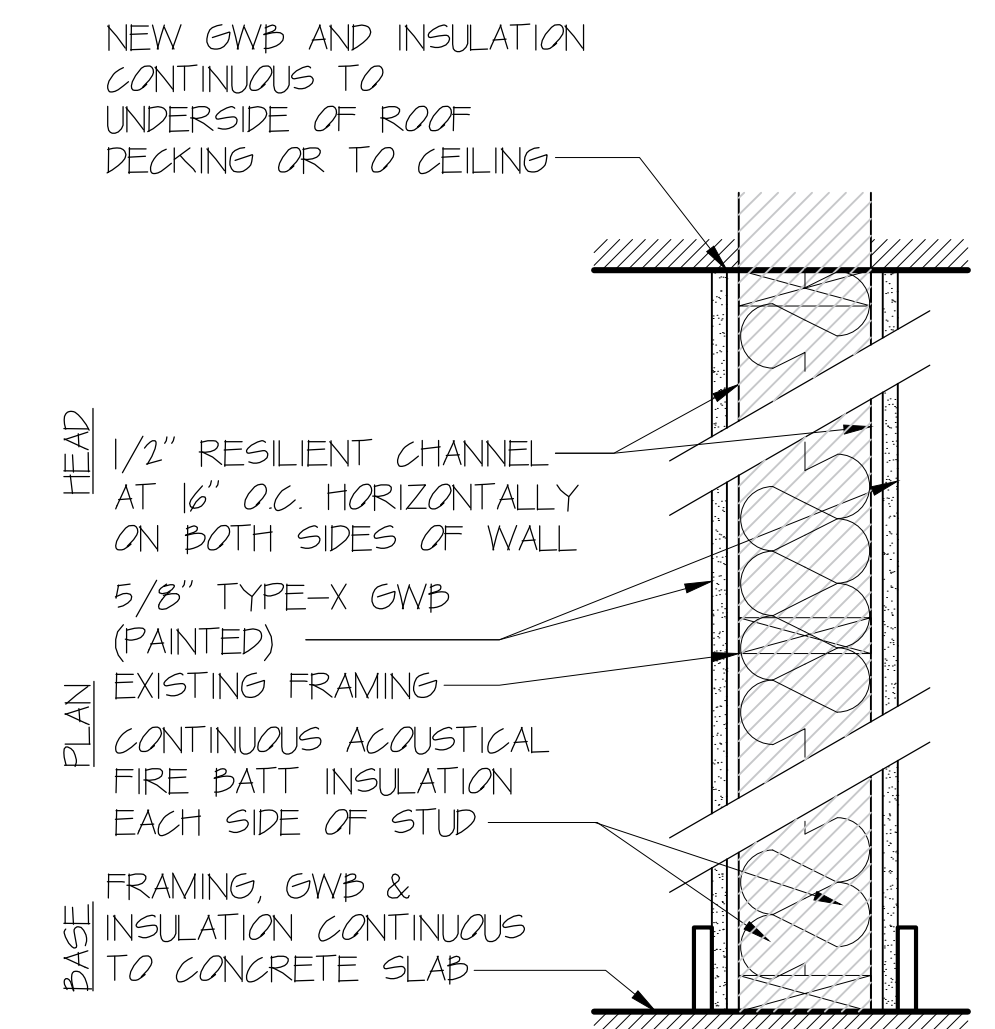
**EL** EXISTING WOOD FRAMING ACOUSTICAL AND LOAD BEARING WALL  
MATCH WALL THICKNESS TO EXISTING



**F6** 2X6 WOOD FRAMING FIRE WALL  
1 HOUR RATED UL-913 ASSEMBLY  
STC RATING: 50-54  
MATCH WALL THICKNESS TO EXISTING

**NOTE:**

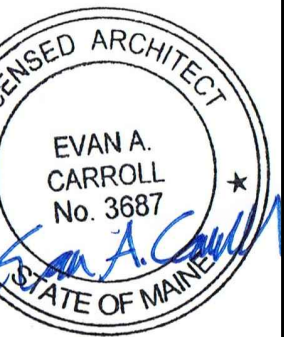
PENETRATIONS, JOINTS, OPENINGS, AND DUCTS INTERRUPTING ANY FIRE RATED ASSEMBLY SHALL CONFORM WITH IBC CHAPTER 7.



**E6** EXISTING WOOD FRAMING FIRE WALL  
1 HOUR RATED UL-913 ASSEMBLY  
STC RATING: 50-54  
MATCH WALL THICKNESS TO EXISTING

**NOTE:**

PENETRATIONS, JOINTS, OPENINGS, AND DUCTS INTERRUPTING ANY FIRE RATED ASSEMBLY SHALL CONFORM WITH IBC CHAPTER 7.



REVISIONS
1
2
3
4
5

PERMIT SET

DRAWN BY EMW  
SHEET TITLE FINISHES AND PARTITIONS

ISSUE DATE 4/15/16  
SHEET SCALE 1/4" = 1'-0"