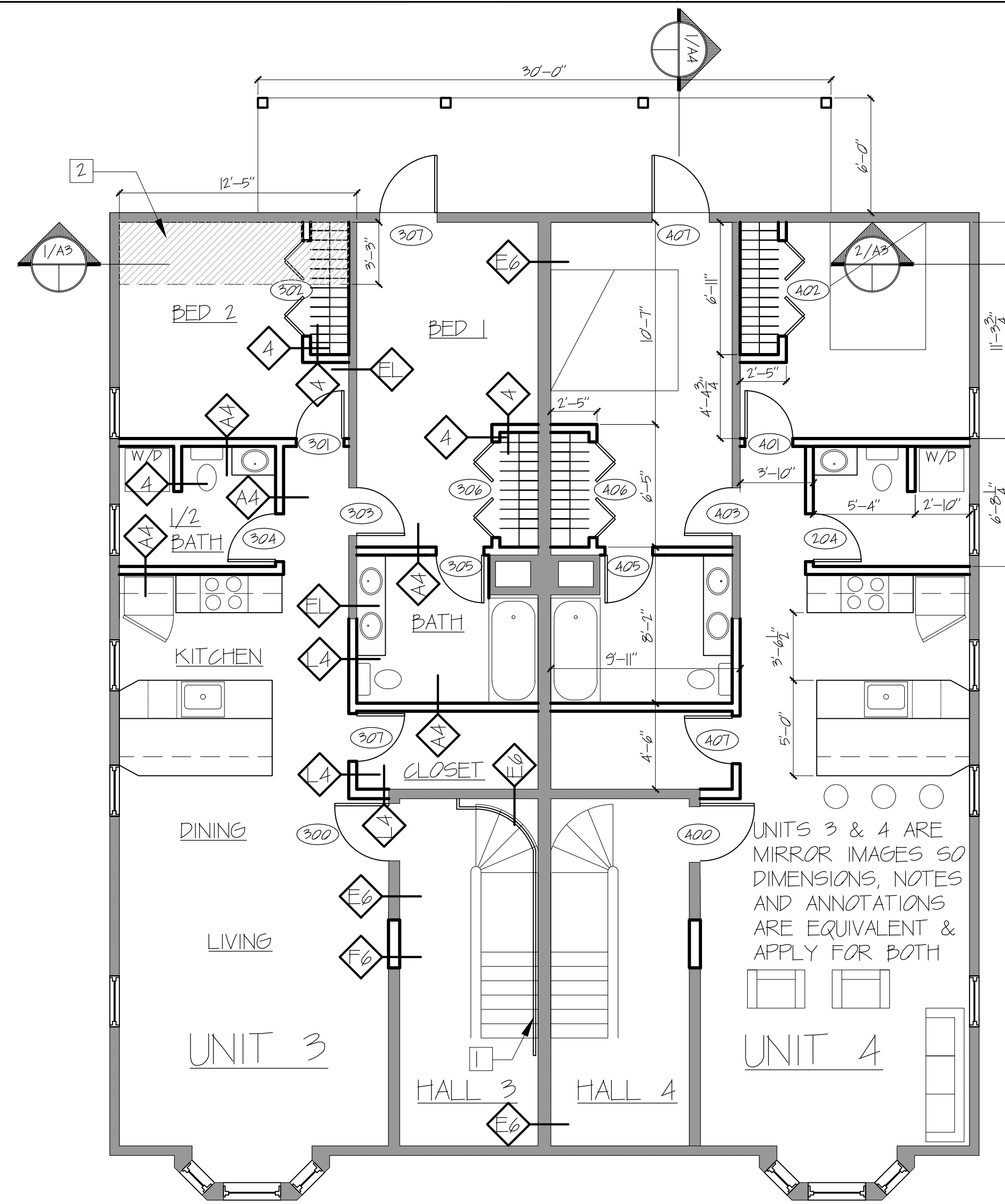
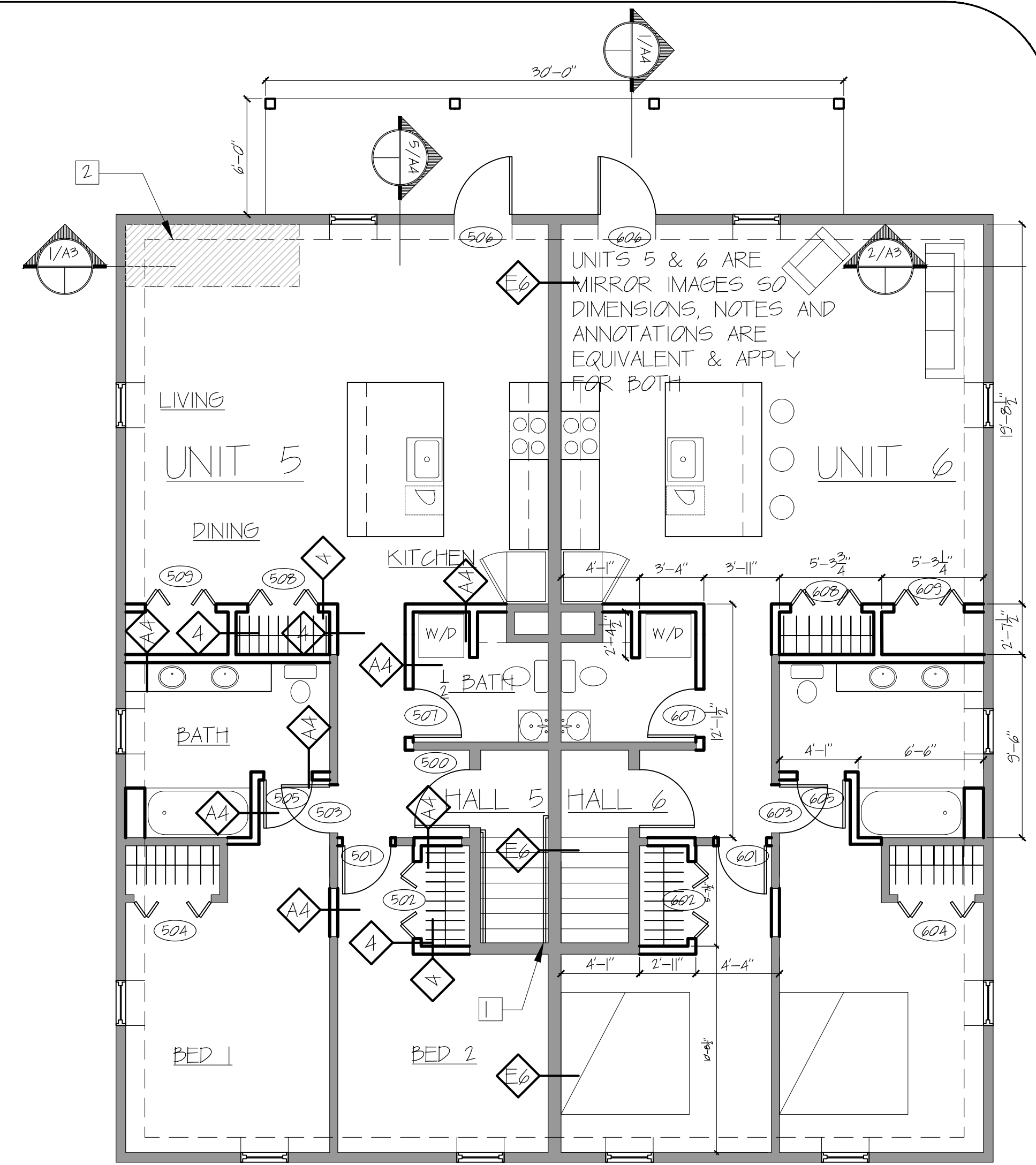


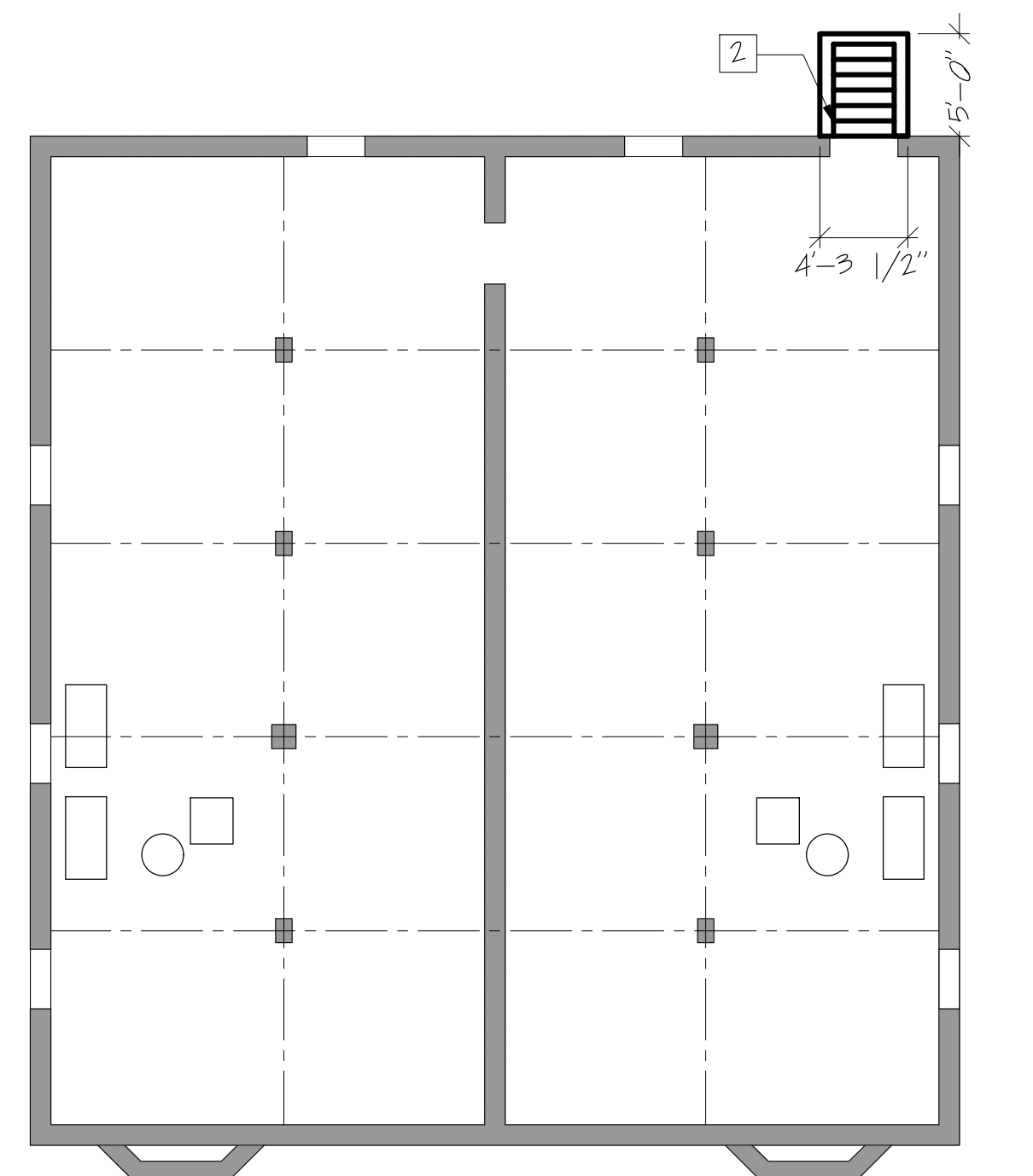
1 FIRST FLOOR
SCALE: 3/16" = 1'-0"



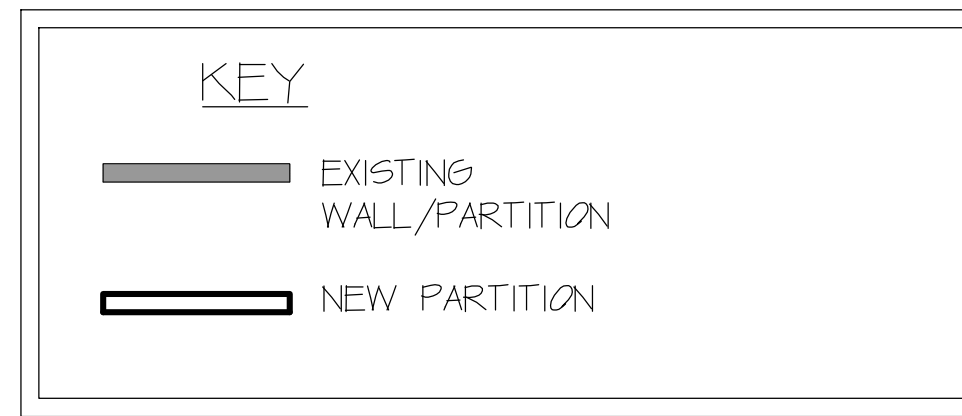
2 SECOND FLOOR
SCALE: 3/16" = 1'-0"



3 THIRD FLOOR
SCALE: 3/16" = 1'-0"



1 BASEMENT
SCALE: 1/8" = 1'-0"



- KEYNOTES:**
1. NEW CODE COMPLIANT STAIR RAILING - 1-1/2" RAILING
1-1/2" OFF WALL AND 3/8" ABOVE STAIR SLOPE
 2. AREA OF FLOOR INFILL FROM REMOVED STAIR
 3. PRE-FAB CONCRETE BULKHEAD

GENERAL NOTES:

- A. PATCH AND REPAIR ANY DAMAGE CAUSED BY DEMOLITION TO MATCH ADJACENT FINISHES.
- B. CLEAN AND PREPARE SURFACES TO RECEIVE NEW FINISHES. PAINT ALL EXISTING AND NEW EXPOSED SURFACES INCLUDING GYPSUM WALLBOARD AT FLOORS AND CEILINGS, TRIM, RAILINGS, ETC.
- C. FINAL FINISHES TO BE SELECTED BY OWNER.
- D. PATCH FLOORS AT LOCATIONS WHERE EXISTING WALLS HAVE BEEN REMOVED. ENSURE SUBFLOOR IS FLUSH AND LEVEL PRIOR TO INSTALLING FLOOR FINISHES.
- E. WHERE NEW WALLS OR INFILLS ABUT OR INTERSECT EXISTING WALLS, ALIGN NEW FINISH WITH EXISTING WALLS, ALIGN NEW FINISH WITH EXISTING FINISH AND FINISH JOINTS AT INTERSECTIONS SMOOTH AND CONTIGUOUS.
- F. WALL TYPES ON A6