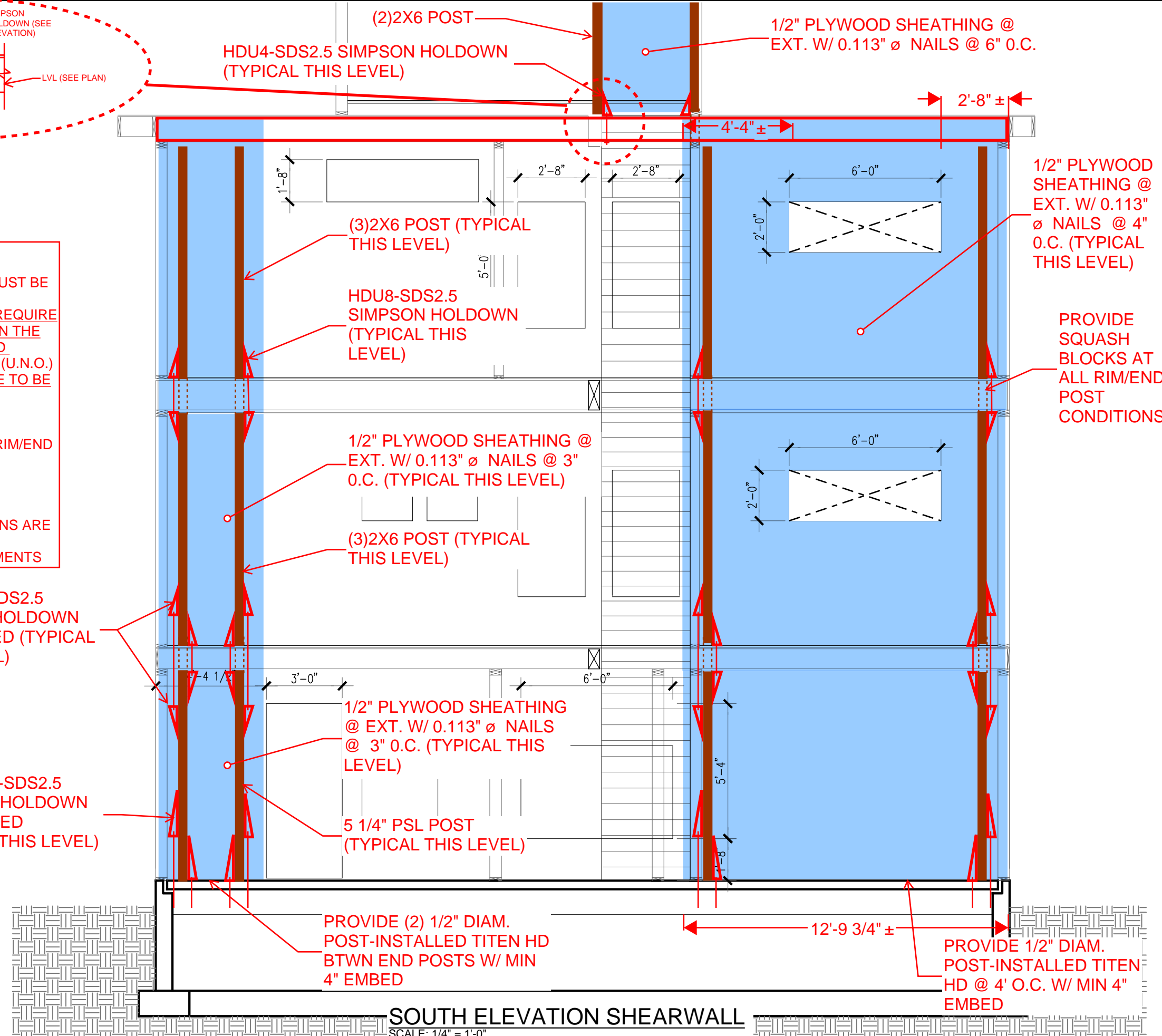


- NOTES:**
- 1) AT ALL SHEAR WALLS: BLOCKING MUST BE PROVIDED AT EDGE NAILING.
 - 2) AT SHEAR WALL LOCATIONS THAT REQUIRE 2" O.C. NAILING BLOCKING MUST BE ON THE FLAT AND NAILS MUST BE STAGGERED
 - 3) FIELD NAILING AT 12"X16" PATTERN (U.N.O.)
 - 4) H.D. GALV HOLD-DOWN ANCHORS ARE TO BE CAST-IN TO CONCRETE.
 - 5) NAILS ARE TO BE 0.113" Ø BOX NAILS(U.N.O.)
 - 6) PROVIDE SQUASH BLOCKS AT ALL RIM/END POST CONDITIONS
 - 7) FOR HOLD-DOWN ANCHOR ROD REQUIREMENTS REFER TO HOLD-DOWN SCHEDULE ON SHEET S2.2.
 - 8) AT LOCATIONS WHERE (2) HOLD-DOWNS ARE REQUIRED, HOLD-DOWNS MUST BE STAGGERED PER SIMPSON REQUIREMENTS

- (2) HDU8-SDS2.5 SIMPSON HOLD-DOWN STAGGERED (TYPICAL THIS LEVEL)
- (2) HDU11-SDS2.5 SIMPSON HOLD-DOWN STAGGERED (TYPICAL THIS LEVEL)



SOUTH ELEVATION SHEARWALL
SCALE: 1/4" = 1'-0"

HOWARD ST. RESIDENCE	
PORTLAND, ME	
SOUTH ELEVATION SHEARWALL	
DATE:	12/20/2016
SHEET:	S2.4