
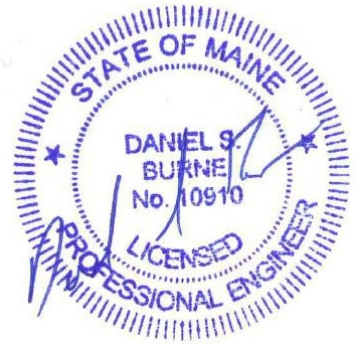
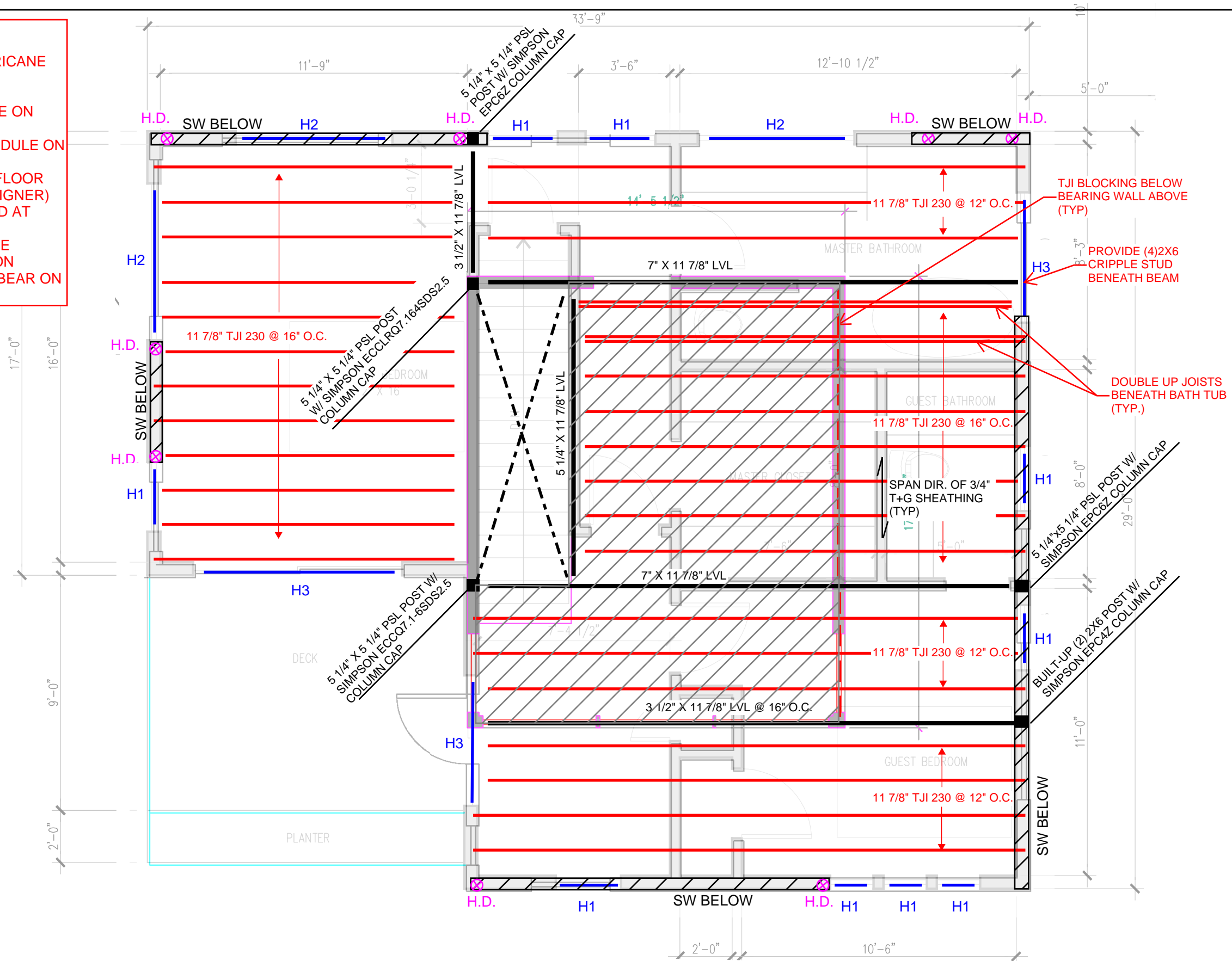


**NOTES:**

- 1) PROVIDE SIMPSON H2.5 HURRICANE TIES AT ROOF BEAM BEARING LOCATIONS (TYPICAL)
- 2) REFER TO HANGER SCHEDULE ON SHEET S0.0.
- 3) HX - REFER TO HEADER SCHEDULE ON SHEET S0.0.
- 4)  - HATCH INDICATES FLOOR OVERFRAMING (COORD. W/ DESIGNER)
- 5) PROVIDE 1 1/8" LVL RIM BOARD AT EXTERIOR WALLS (TYPICAL)
- 6) ALL LVL CARRYING BEAMS ARE REQUIRED TO BEAR DIRECTLY ON COLUMNS. BEAMS ARE NOT TO BEAR ON TOP PLATES

NOTE: 4TH FLOOR ROOF/FLOOR PLAN SHOWN W/ 3RD FLOOR PLAN UNDERLAID



HOWARD ST.  
RESIDENCE  
PORTLAND, ME

4TH FLOOR  
FRAMING  
PLAN

DATE: 12/20/2016

SHEET: S1.4

**4TH FLOOR FRAMING PLAN**  
SCALE: 1/4" = 1'-0"