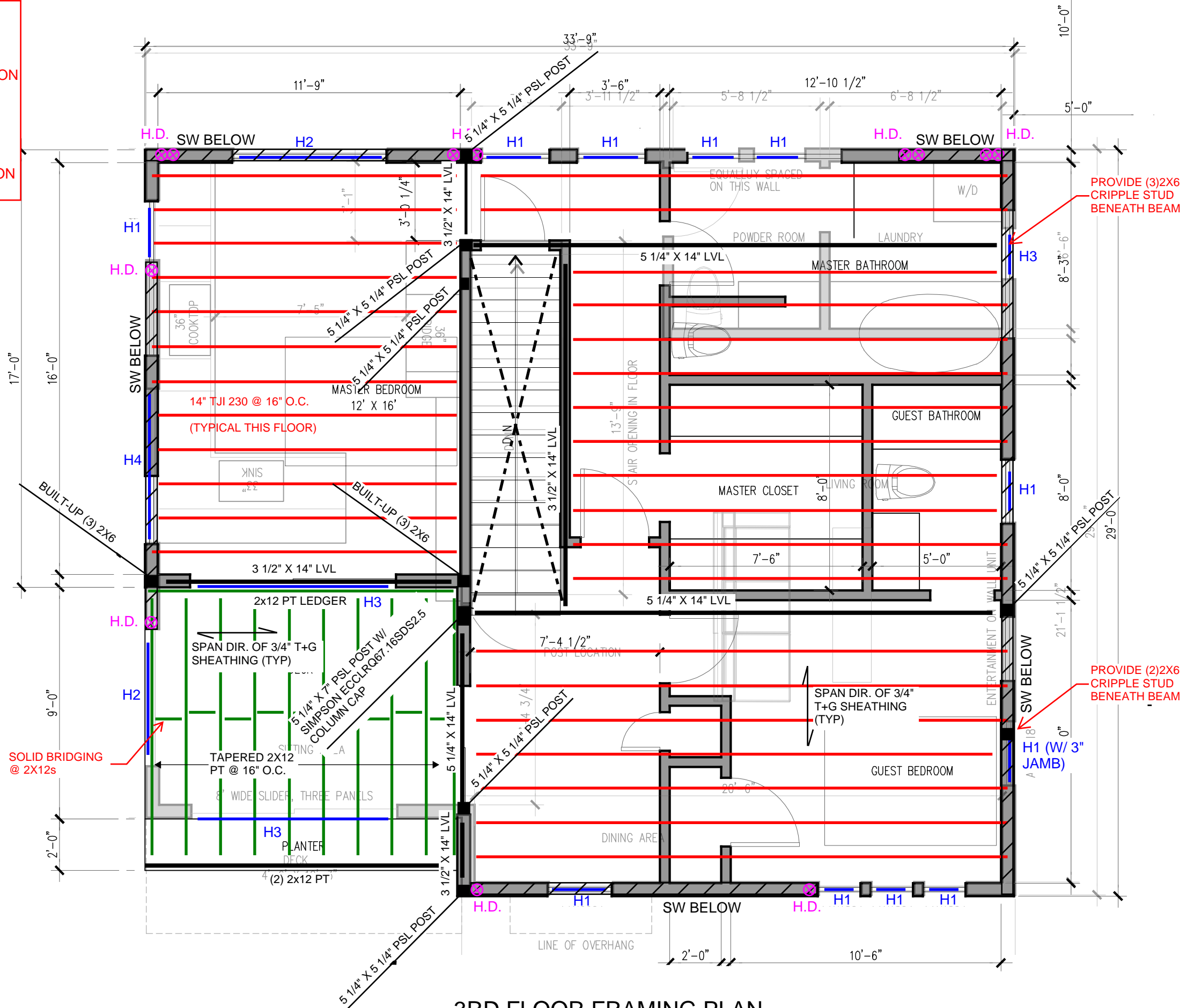


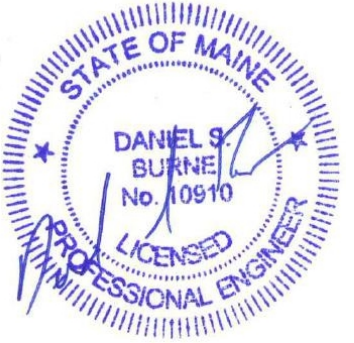
NOTES:

- 1) REFER TO HANGER SCHEDULE ON SHEET S0.0.
- 2) HX - REFER TO HEADER SCHEDULE ON SHEET S0.0.
- 4) PROVIDE 1 1/8" LVL RIM BOARD AT EXTERIOR WALLS (TYPICAL)
- 5) ALL LVL CARRYING BEAMS ARE REQUIRED TO BEAR DIRECTLY ON COLUMNS. BEAMS ARE NOT TO BEAR ON TOP PLATES

NOTE: 3RD FLOOR PLAN SHOWN W/ 2ND FLOOR PLAN UNDERLAID



3RD FLOOR FRAMING PLAN
SCALE: 1/4" = 1'-0"



HOWARD ST. RESIDENCE
PORTLAND, ME

3RD FLOOR FRAMING PLAN

DATE:	12/20/2016
SHEET:	S1.3