

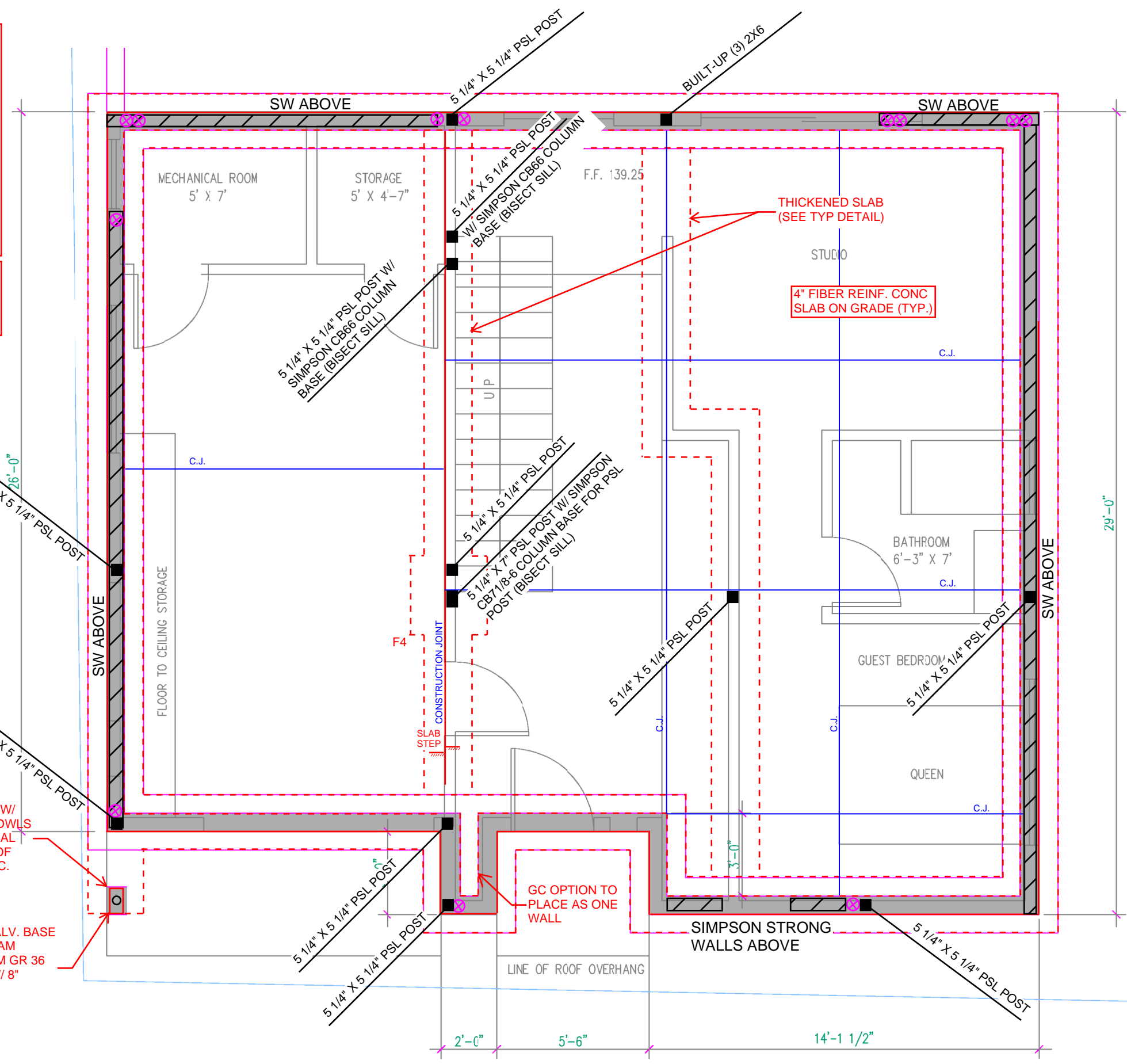
NOTES:

- 1) H.D. GALV. HOLDOWN ANCHORS ARE TO BE CAST-IN WITH CONCRETE. REFER TO SHEET S2.2 FOR HOLDOWN ANCHOR SCHEDULE AND EMBEDMENTS. COORDINATE LOCATION WITH POSTS.
- 2) ⊗ - INDICATES HOLDOWN LOCATION. COORDINATE LOCATION WITH POSTS.
- 3) ALL LVL CARRYING BEAMS ARE REQUIRED TO BEAR DIRECTLY ON COLUMNS. BEAMS ARE NOT TO BEAR ON TOP PLATES

Footing Schedule

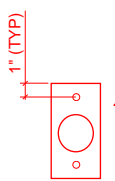
Tag	Size	Reinforcement
F4	4'x4'x1'	(4) #5 E.W. Bottom

NOTE: 1ST FLOOR / FOUNDATION PLAN SHOWN



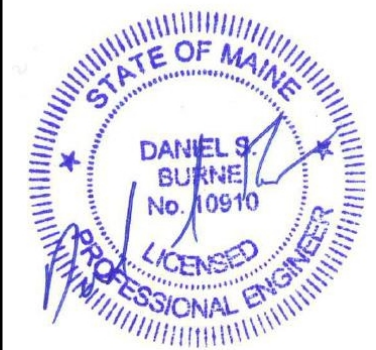
8"X1'-0" CONCRETE PIER W/ 4#5 VERT W/ MATCHING DWLS W/ 3#5 TIES @ 3" O.C. & BAL @ 12" O.C. VERIFY TOP OF PIER ELEVATION WITH GC.

PL 1/2"x6"x0'-11" H.D. GALV. BASE PLATE WITH (2) 9/16" DIAM HOLES FOR (2) 1/2" DIAM GR 36 GALV ANCHOR RODS W/ 8" EMBED & 4" PROJ.



PROVIDE 1" EDGE DISTANCE FOR ANCHOR RODS

FOUNDATION PLAN
SCALE: 1/4" = 1'-0"



HOWARD ST. RESIDENCE
PORTLAND, ME

FOUNDATION PLAN

DATE: 12/20/2016

SHEET: **S1.1**