

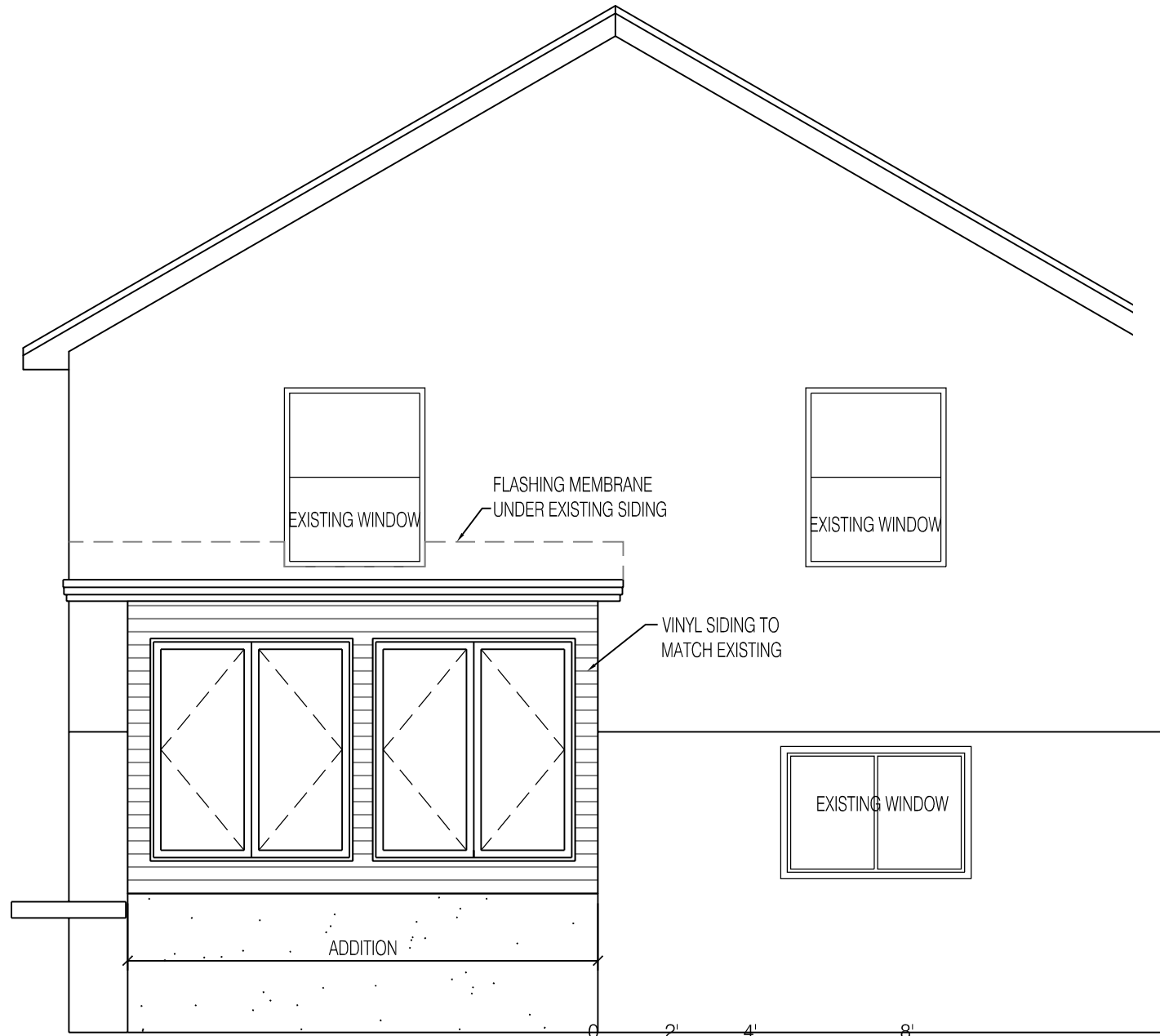


Reviewed for Code Compliance
Inspections Division
Approved with Conditions

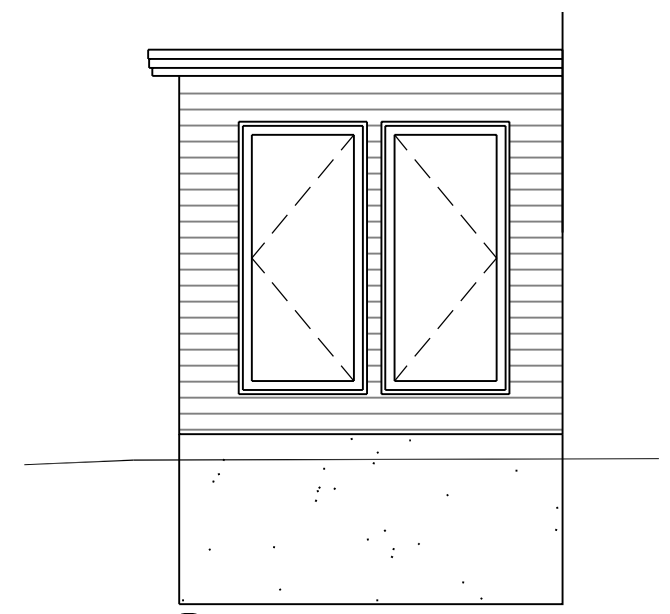
Date: 03/01/18



1 NORTHEAST ELEVATION
1/4" = 1'-0"



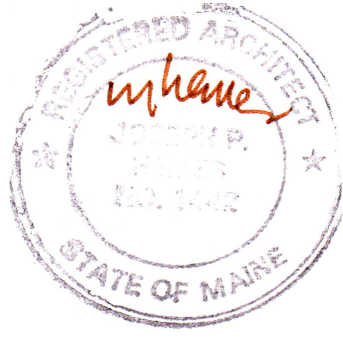
2 NORTHWEST ELEVATION
1/4" = 1'-0"
SCALE: 1/4" = 1'-0"



3 SOUTHWEST ELEVATION
1/4" = 1'-0"

PROSPECT
DESIGN
58 FORE ST. PORTLAND, ME
www.prospectdesign.me
T. 207 - 749 - 7400

HEMESPHERE
DESIGN
Architecture
54 Cove Street
Portland, ME 04101
207.232.6079
joe@hemisphere-design.com
hemisphere-design.com



ELEVATIONS
95 CONGRESS STREET

DATE: 1.15.2018

DRAWN BY: BB

A2