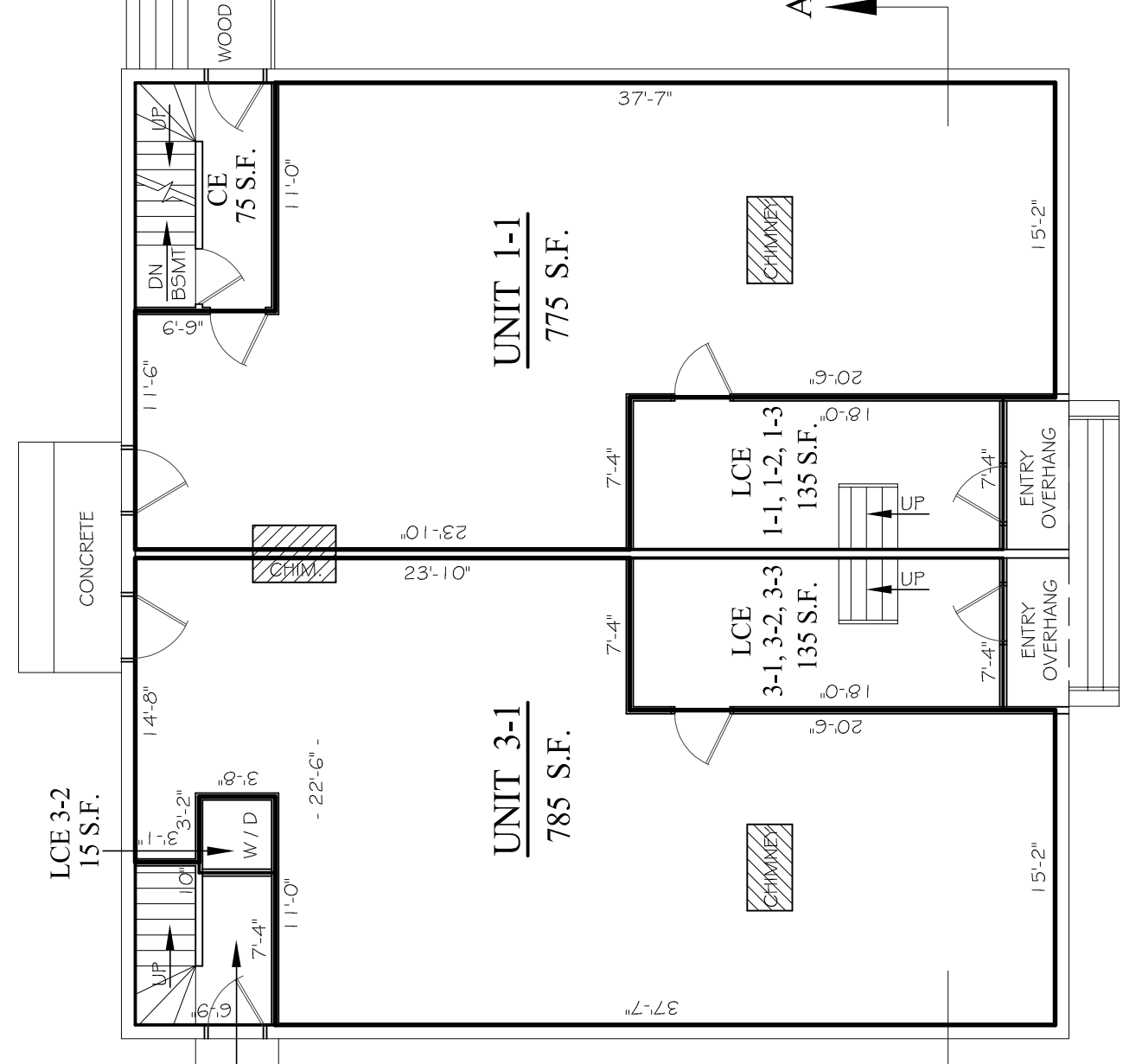
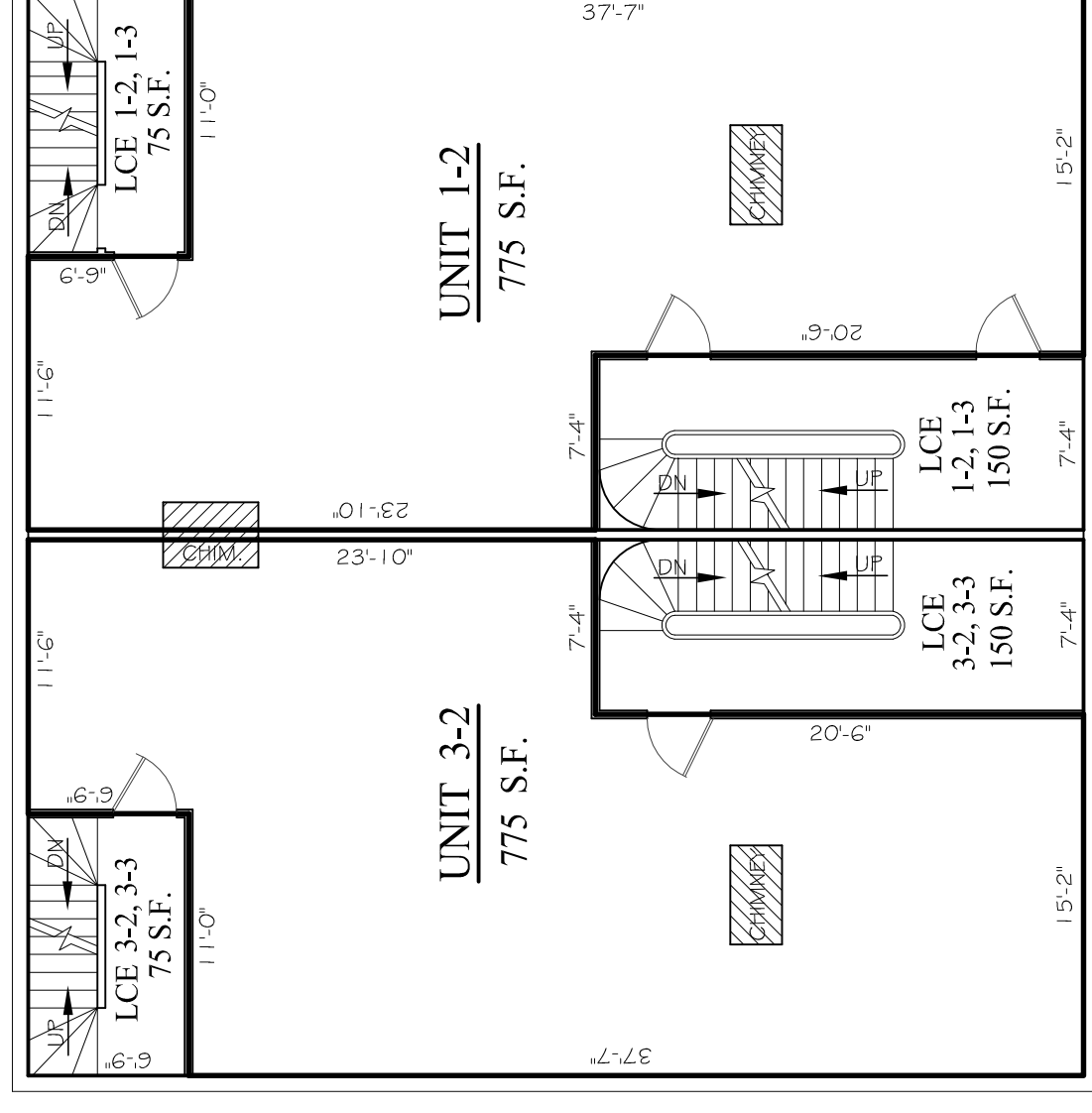


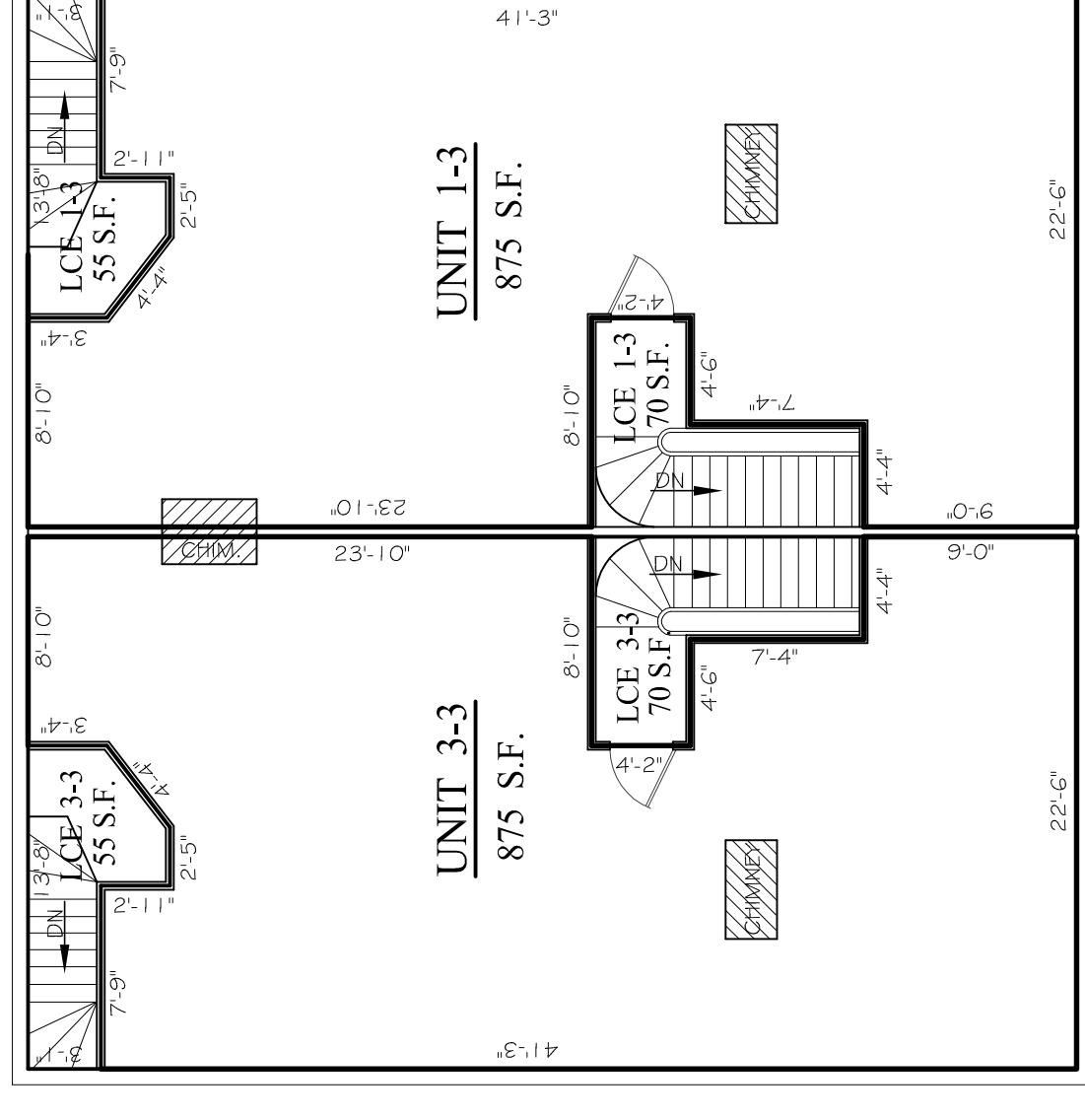
BASEMENT



FIRST FLOOR

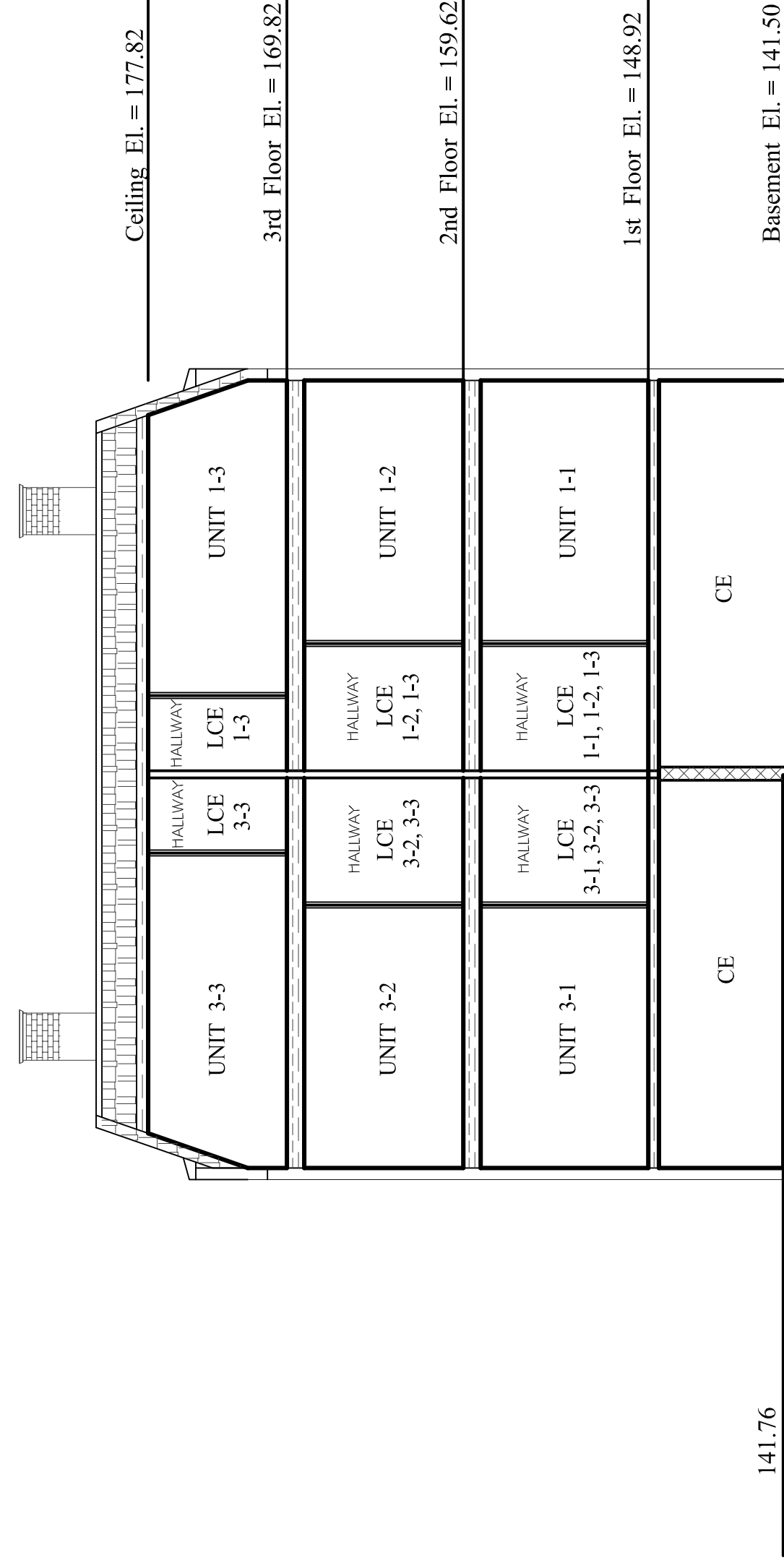


SECOND FLOOR



THIRD FLOOR

← CUMBERLAND AVENUE
VERTICAL BOUNDARY



SECTION A-A
← CUMBERLAND AVENUE
HORIZONTAL BOUNDARY
NOTE: ELEVATIONS BASED ON CITY DATUM

LEGEND:

- CE COMMON ELEMENT
- LCE LIMITED COMMON ELEMENT
- UNIT BOUNDARY

GRAPHIC SCALE

HORIZONTAL & VERTICAL BOUNDARIES
"1-3 CUMBERLAND AVENUE CONDOMINIUM"
 #1 & #3 CUMBERLAND AVENUE, PORTLAND, MAINE
 MADE FOR RECORD OWNER
MUNJOY PROPERTIES, LLC
 c/o DRUMMOND & DRUMMOND, LP
 ONE MONUMENT WAY, PORTLAND, MAINE

OWEN HASKELL, INC.
 PROFESSIONAL LAND SURVEYORS
 3900 U.S. ROUTE ONE, FALMOUTH, ME 04105 (207) 774-0424

Drawn By	EB	Date	APRIL 4, 2017	Job No.	2016-093P
Trace By	JLW	Scale	1/8" = 1'	Check By	EB
Book No.	FILE	Drwg. No.	2 OF 2		